



Solomon Islands Meteorological Services (SIMS)
Ministry of Environment, Climate Change, Disaster Management, and Meteorology.
P O Box 21, Vayvay Ridge
Ph:24218/23026/933



Tropical cyclones impact on Solomon Islands

RA V 13th Training Course on Tropical Cyclone
RSMC, Nadi, Fiji
9th - 13th September 2019

<http://www.met.gov.sb/>



INTRODUCTION

- Cyclone season for Solomon Islands and southern hemisphere starts from November to April, although very few have occurred off season. Examples of systems recorded outside of seasons are TCs Namu on May 1986 and Raquel in July 2015.
- TC is one of the meteorological extreme weather pattern that can cause massive destruction to the Solomon Islands community and subsequently the economy. It is therefore known as a national issue to the SI Community from a meteorological perspective



VULNERABLE COMMUNITIES

- All the provinces in Solomon Islands are vulnerable to the impacts of TC event. The most affected provinces with strong winds and heavy rainfall in history are **Rennell and Bellona, Temotu, and Makira.**

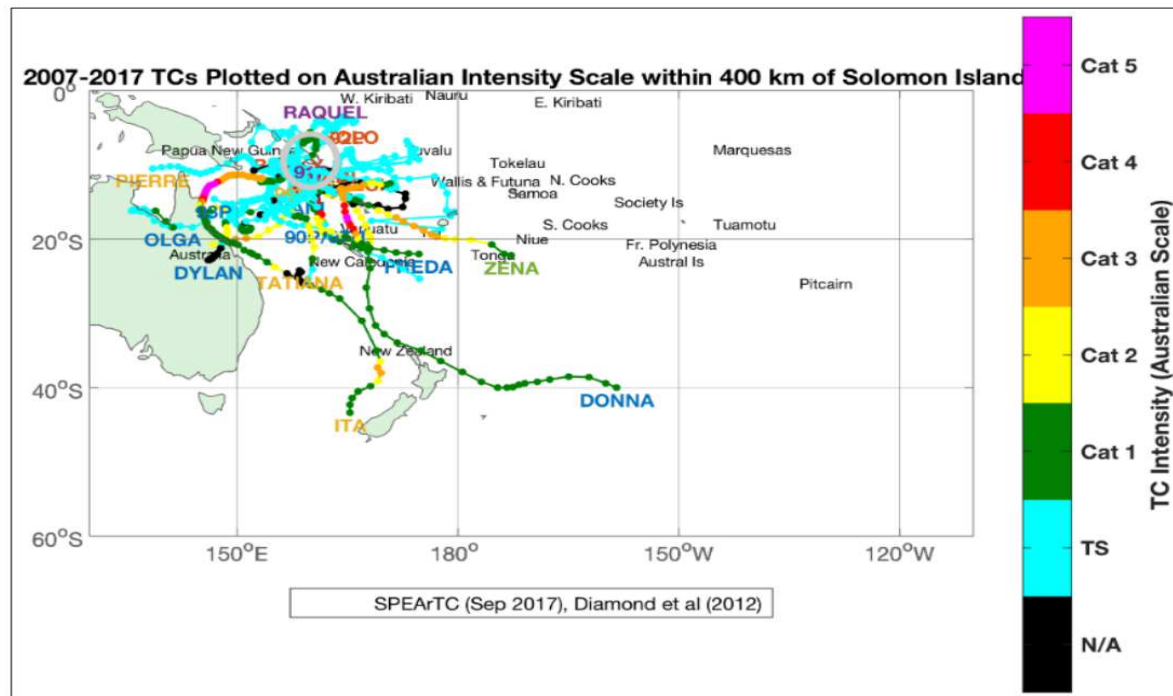


Figure 10. TC tracks and their intensity over the Solomon Islands and the South Pacific region Diamond et al (2012).



However, heavy rainfall that related to the Cyclones do have tremendous impact on agriculture and infrastructure **over all the Islands.**





CHALLENGES TO THE AGENCY

- 2 or 3 man shift during bad weather
- Communication (poor connectivity –bad weather)
- Simplified Terms
- Capacity Building
- More Awareness needed (Geography setting – Islands scattered)

Dissemination

Graphical Public Weather Forecast for Provincial Centres



NATIONAL DISASTER COUNCIL

Solomon Islands Emergency Office
Ministry of Disaster Management, Emergency Management & Meteorological Service
P.O. Box 11, Honiara, Honiara
Honolulu, Hawaii, Hawaii
www.sif.gov.sb www.sif.gov.tu +677 222 2222

Heavy rain & Flooding – What to do information

VILLAGE LEADERS

- Village leaders and families must listen to your radio for emergency information – SIBC, FM, HF radio
- Make sure your neighbors and vulnerable people have received this advice
- Move to safe location when it is required



Heavy rain warning – SmartMet Alert

- Website – www.met.gov.sb
- Radio – Solomon Islands Broadcasting Corporation (SIBC)
- Email
- Fax
- Telephone
- SMS – yet to be developed

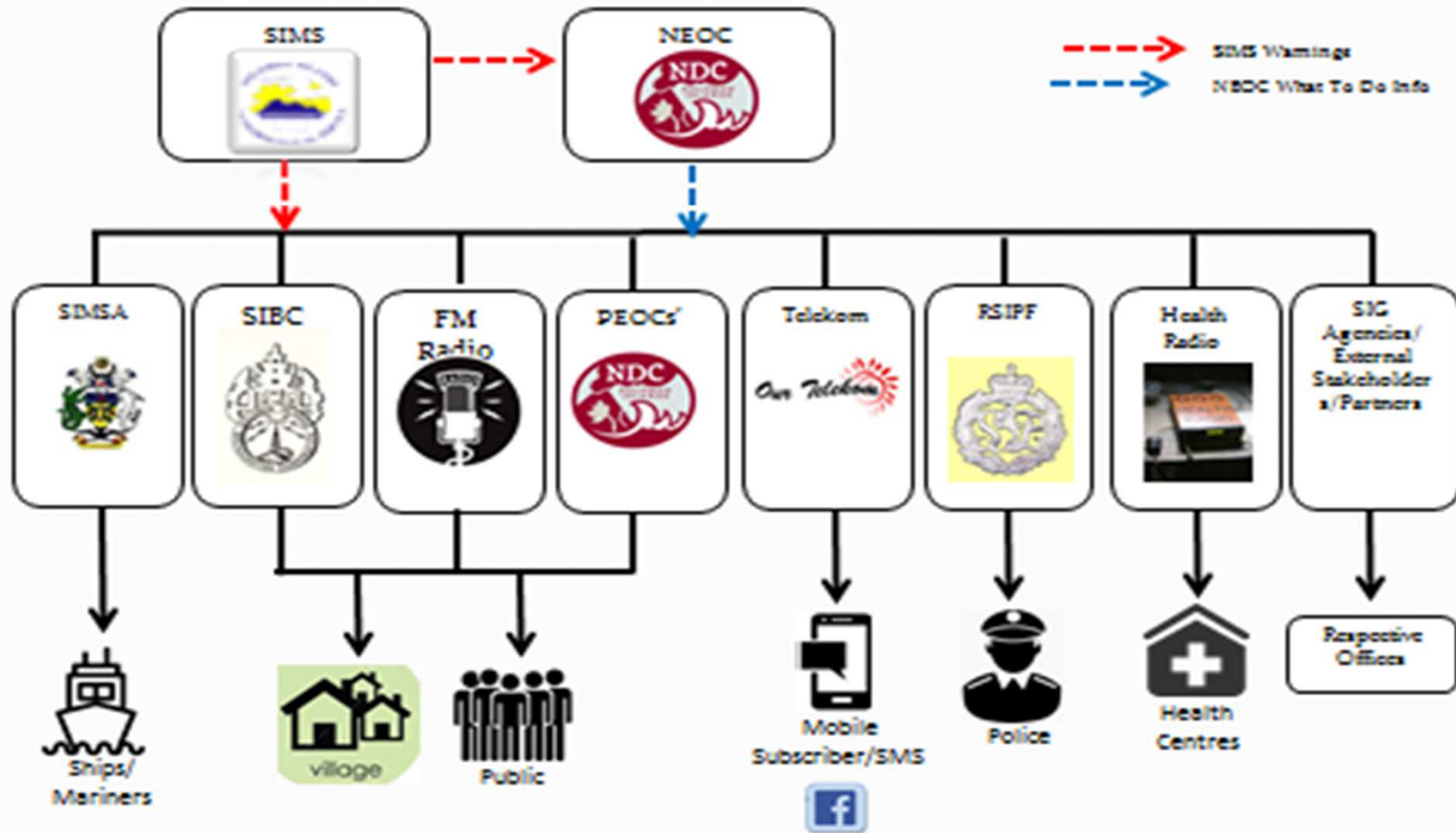
<http://www.met.gov.sb/>



COMMUNICATION AND TARGET GROUPS



Early Warning message Dissemination Arrangements





Thank you for listening!