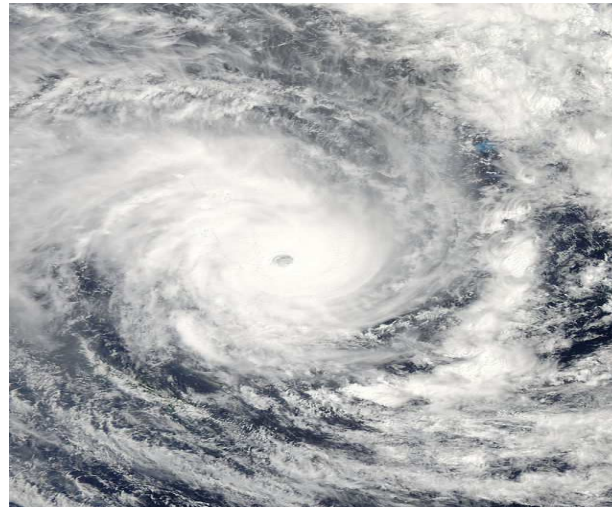


SEVERE TROPICAL CYCLONE PAM

March 2015

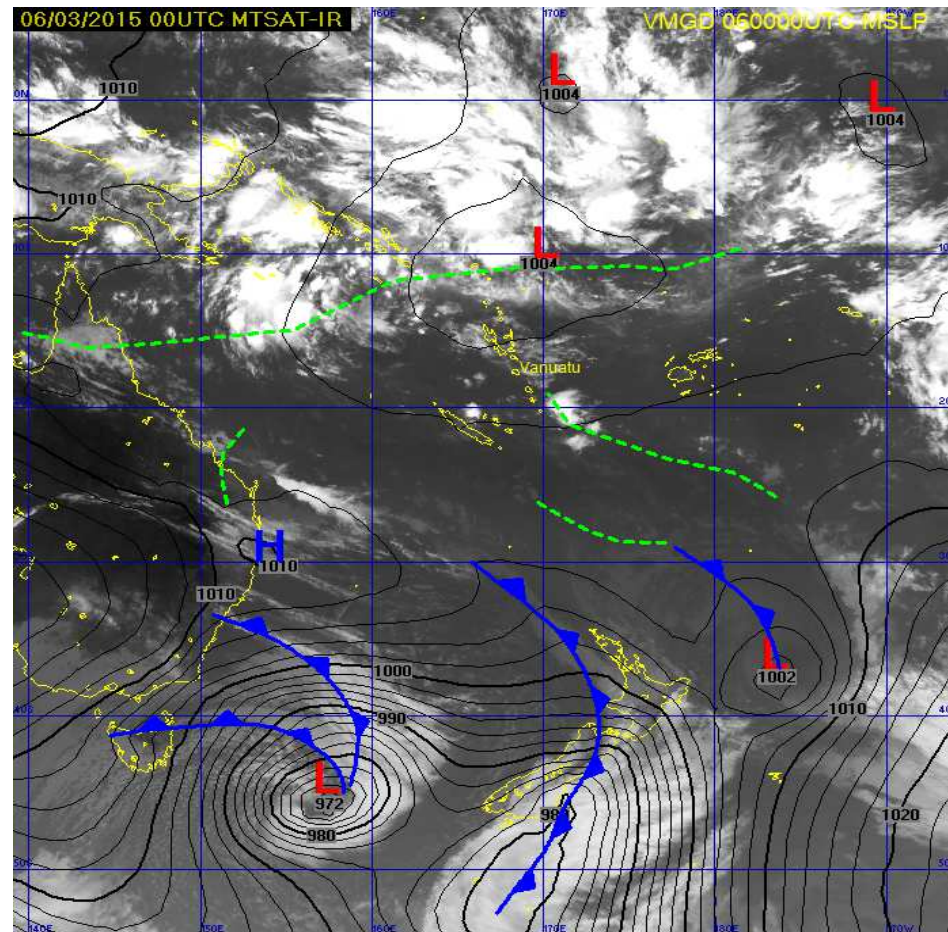


**Vanuatu Meteorology & Geo-Hazards Department
(VMGD) response in terms of its Services and
Preparedness**

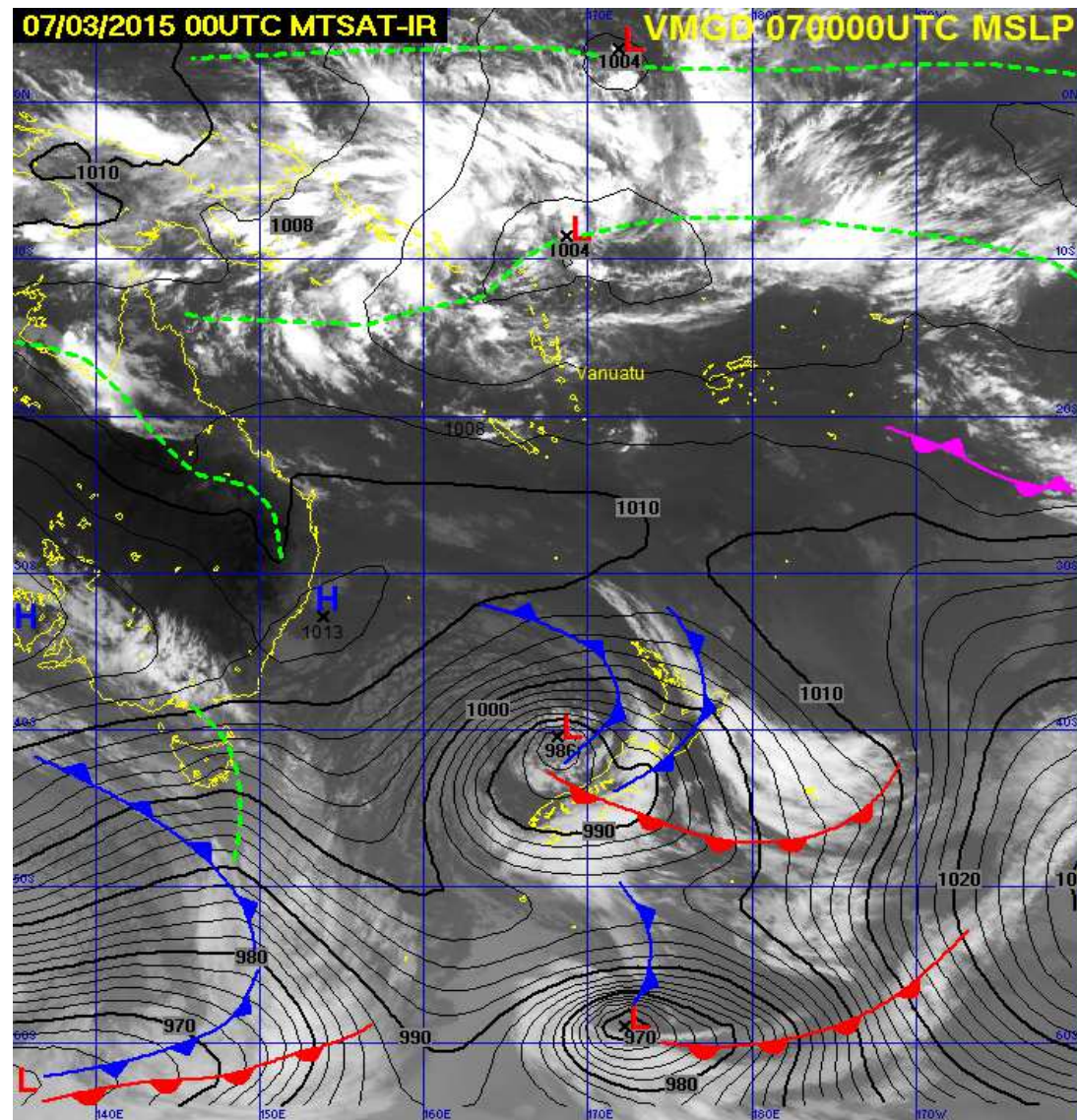
Outlines

- Satellite pictures
- Operation Procedures and experience
- Flow of information
- Short Video with photos

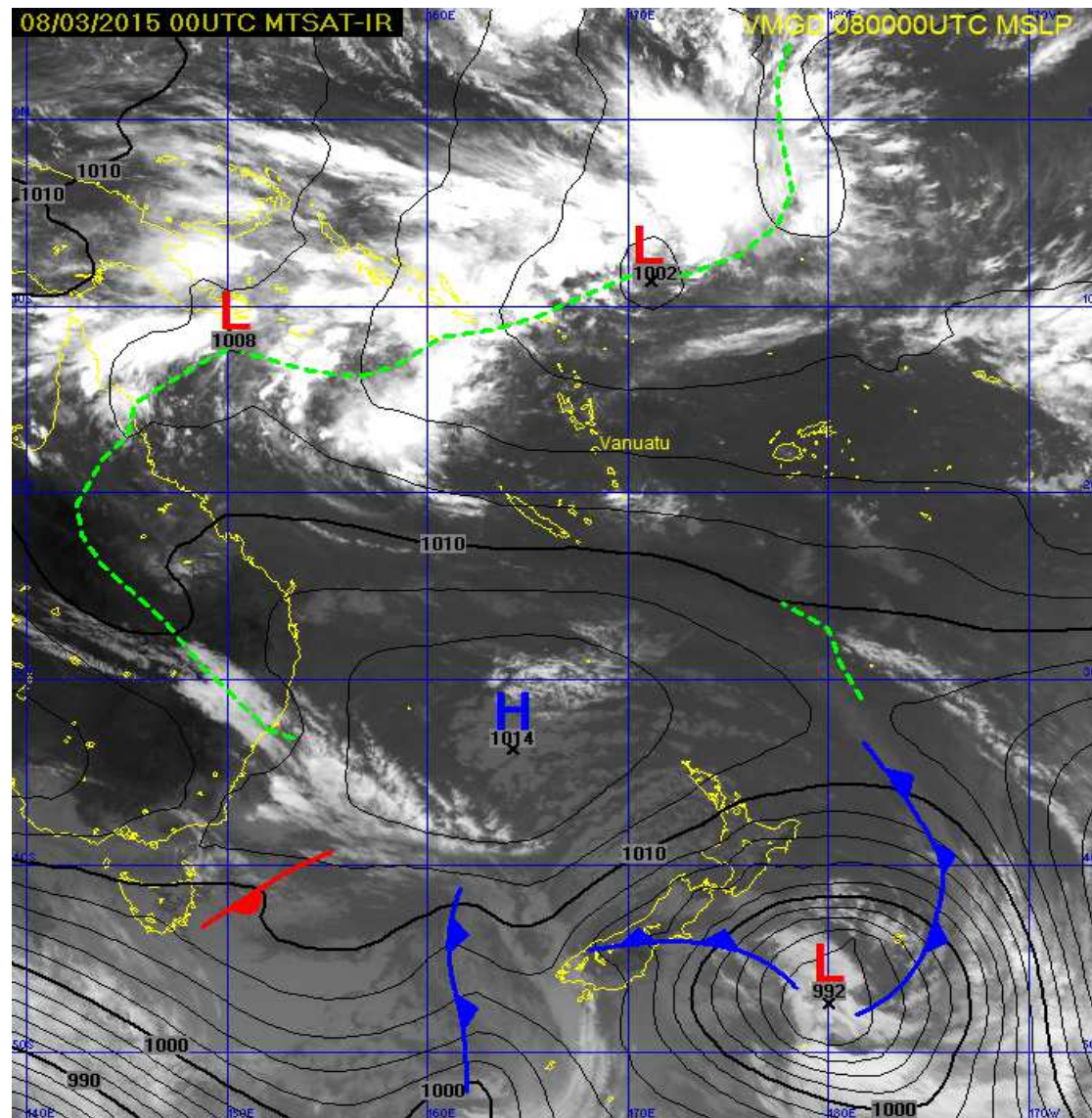
A low (1000 hPa) formed some 800 km NE of Torres Group on the 6th of March.

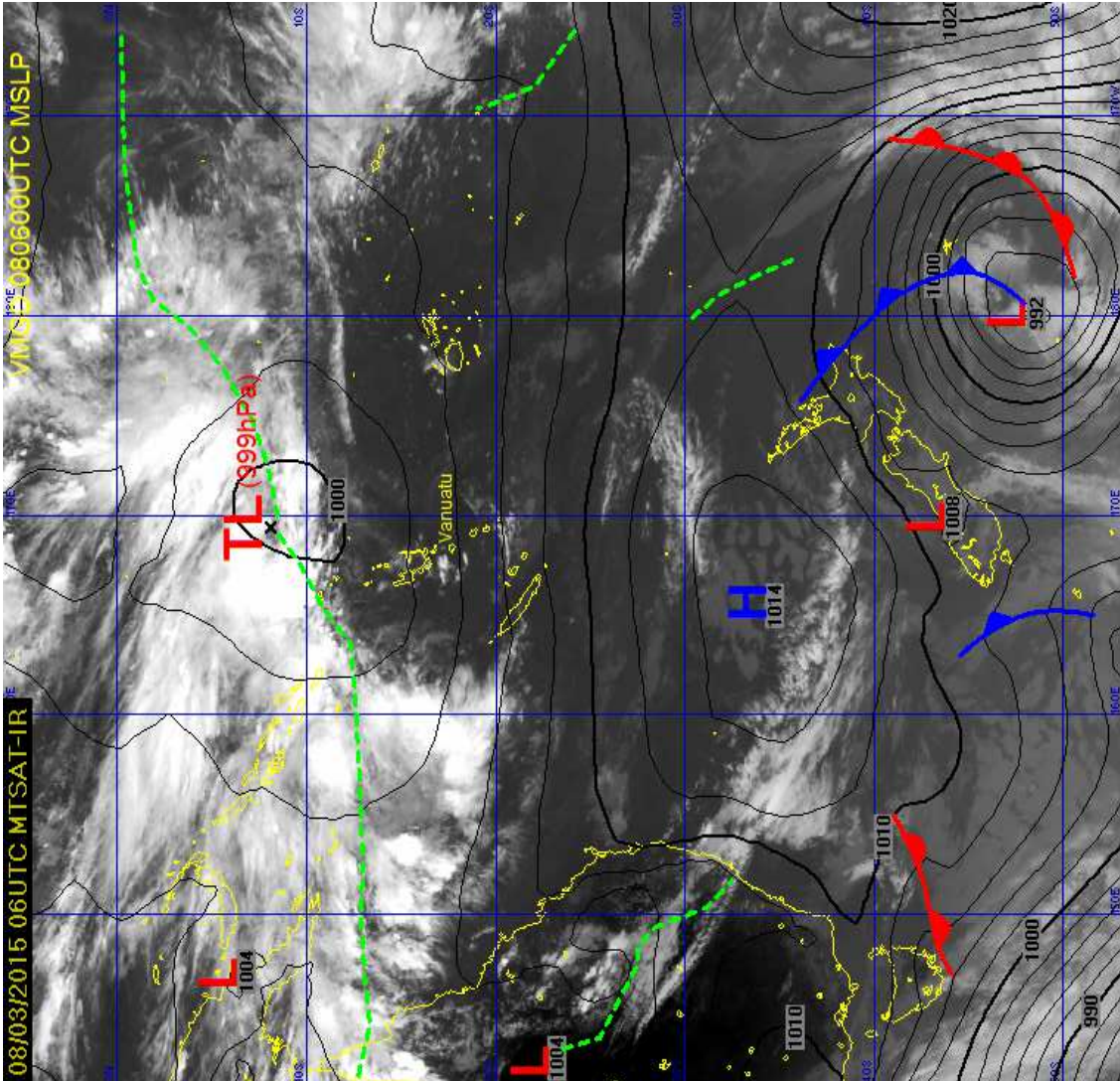


7th of
March

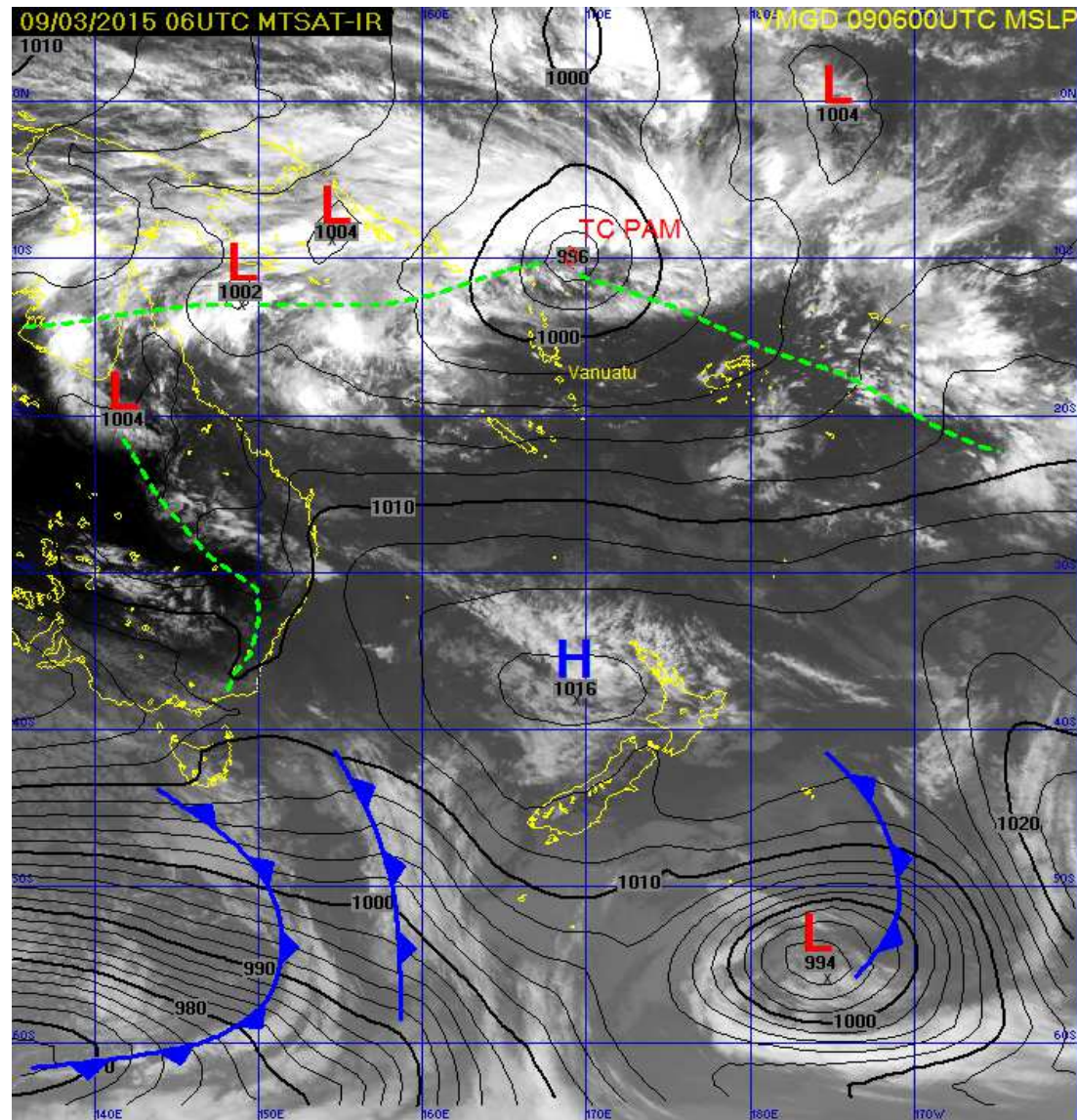


8th of
March





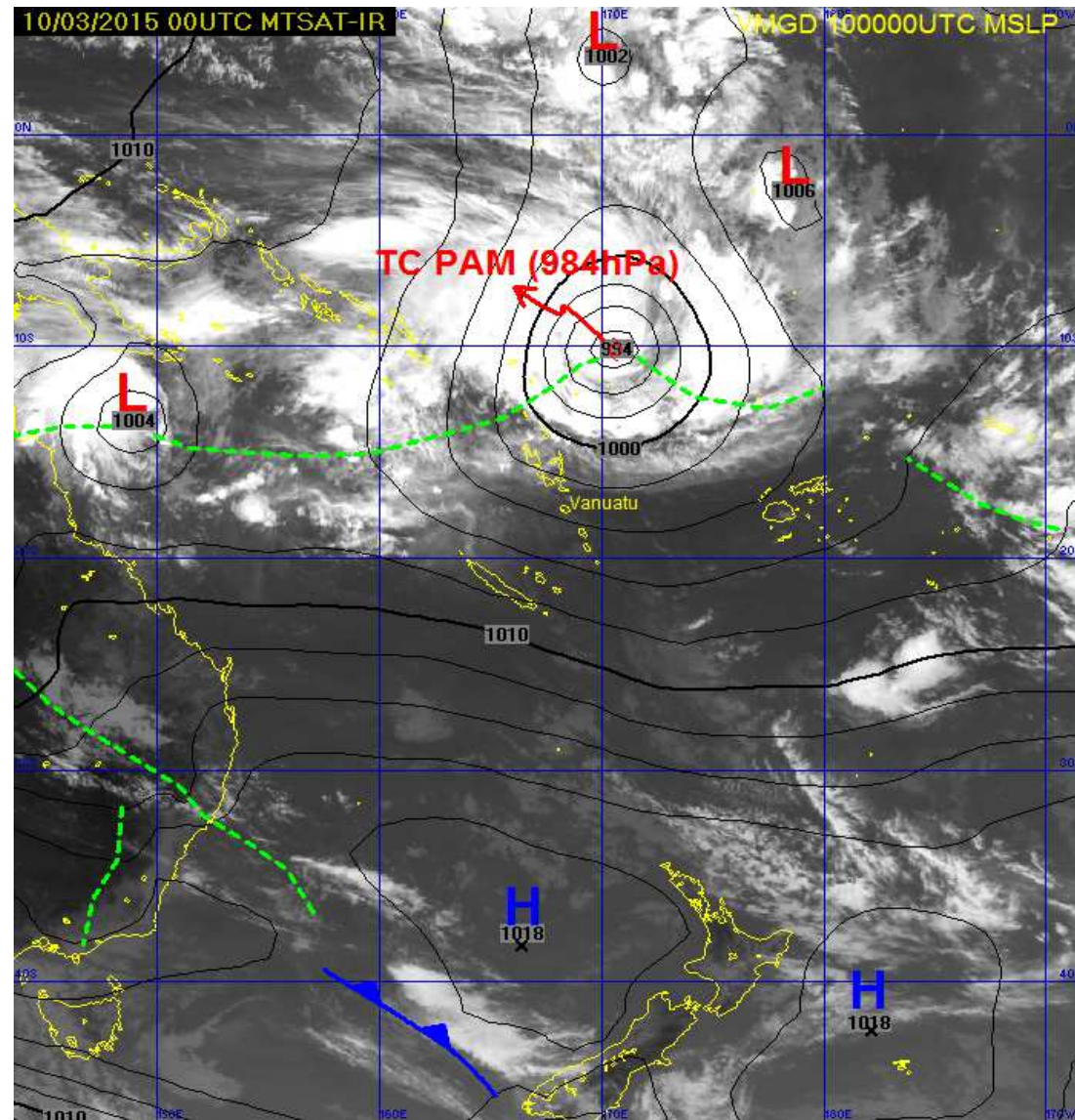
9th of
March



10th of March

Vanuatu Cyclone
[Tracking Map](#)

- [Loop a](#)
- [Loop b](#)



OPERATION DURING TC PAM

Press Release on Tropical Low

- A Press Release concerning Tropical Low on 9th of March 2015, 600 km Northeast of TORBA.
- TL was named TC PAM at 6 pm on the 9th of March 2015

TC Information

- 1ST [information](#) issued by VMGD on TC Pam was at 11am on the 10th of March 2015. Pam was 600 kilometers northeast of the Banks group outside Vanuatu's Area (12S to 23S and 160E to 175E).

TC Advisory

- The first [Advisory](#) issued by the VMGD on Pam was issued at 6:00 pm on the 10th of March when Pam was 560 km northeast of the Banks Group.

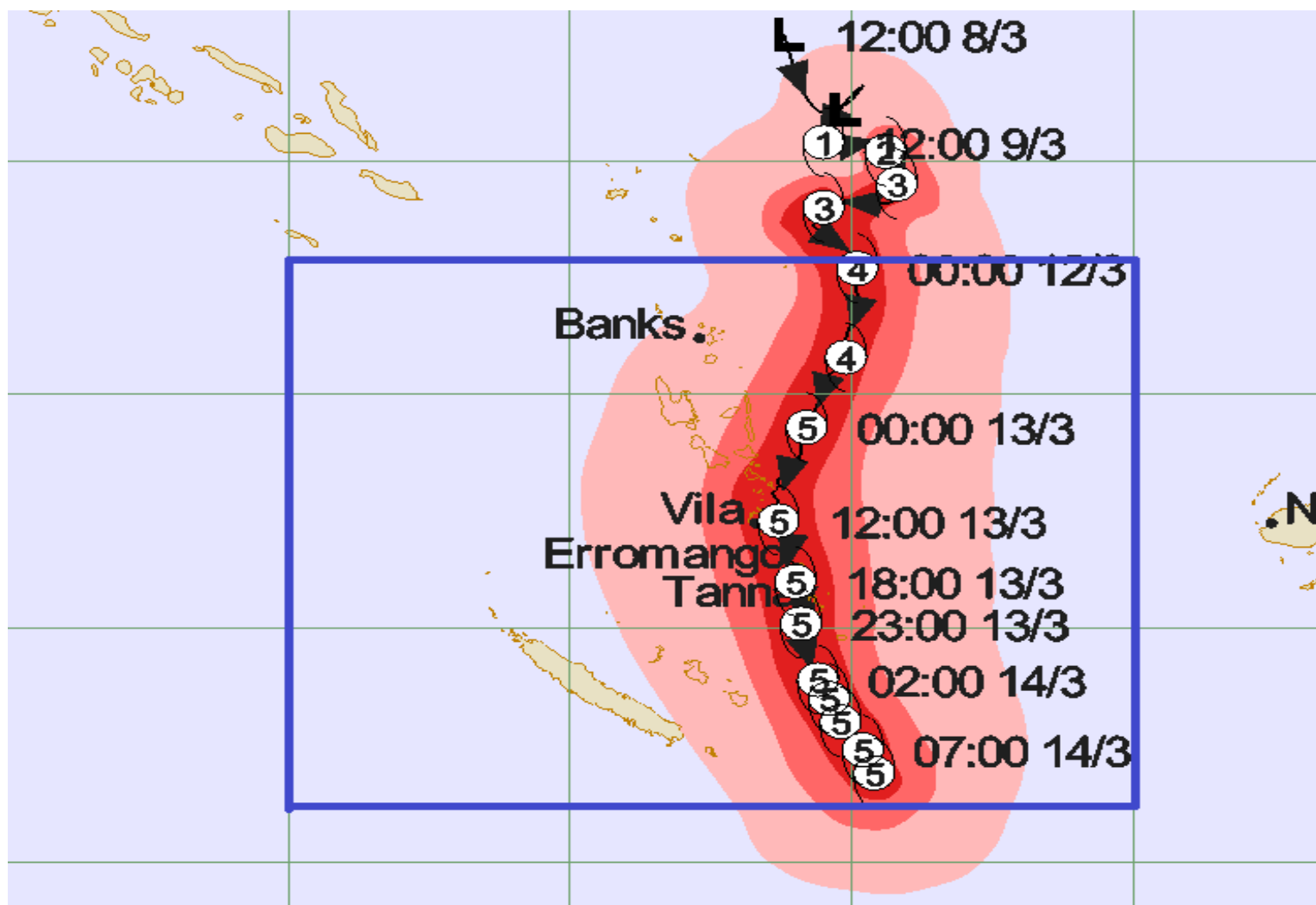
TC Warning

- At 9am, on the 11th of March 2015, the first [warning](#) on TC PAM was issued for the Northern provinces as the system was 425 KM NE of Gaua which at that time, [TC Pam](#) had moved into the Vanuatu's Tropical Cyclone [Tracking Map](#). First [SMS](#) through (Telecom Vanuatu Ltd and Digicel Vanuatu).

Intensification of TC PAM

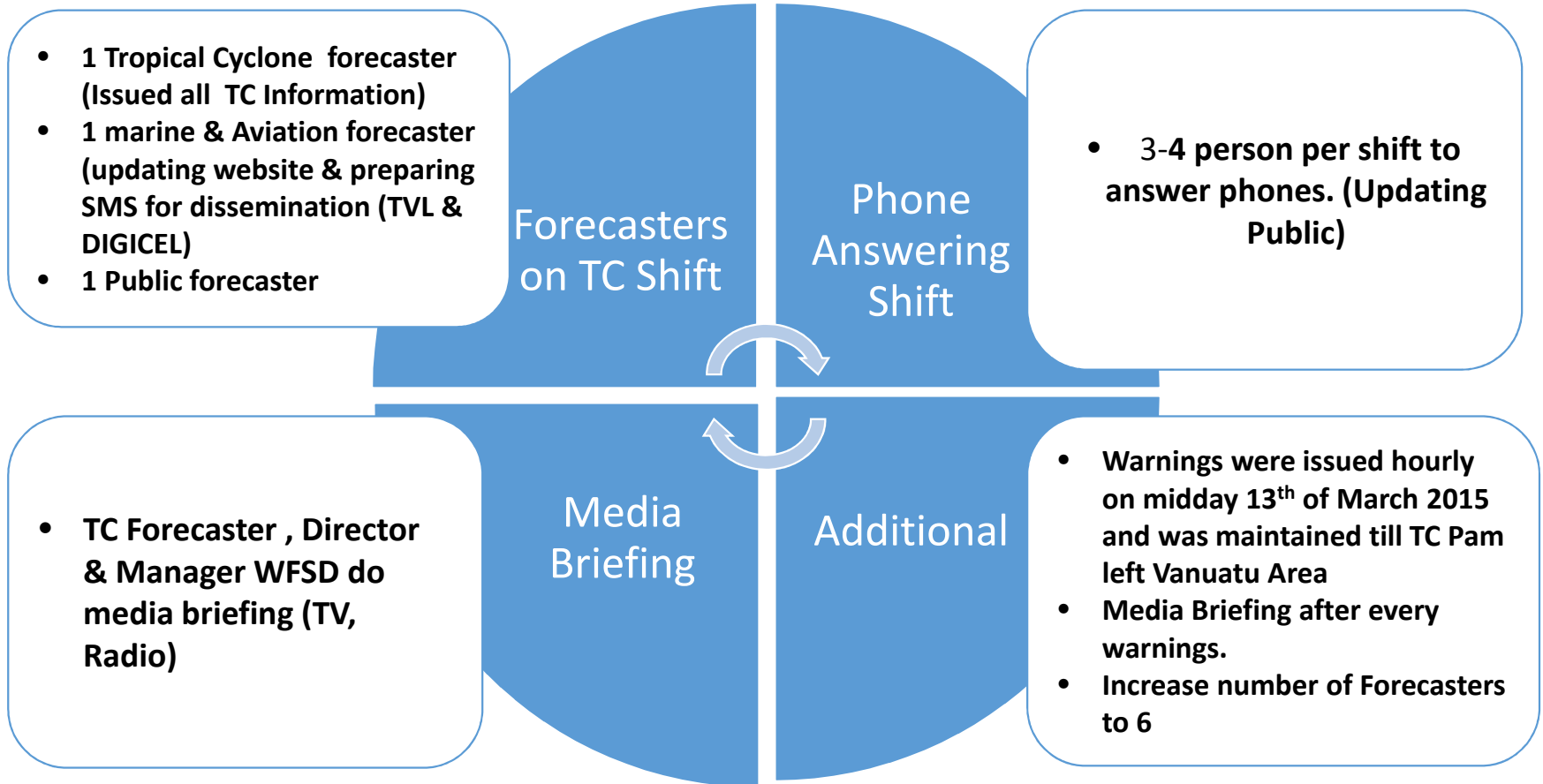
- Pam intensified further into a CAT 4 system at 11am, on the 12th of March 2015, as it moved closer to the northern islands of Vanuatu. The system took a south southwest direction, moving very close to Vanuatu. It became a **CAT 5** system at 11am, on the 13th of March, as it took a south [southwest path](#), to the east of PENAMA province.

Analysis Track of TC PAM with radius of Gale, Storm and Hurricane force winds

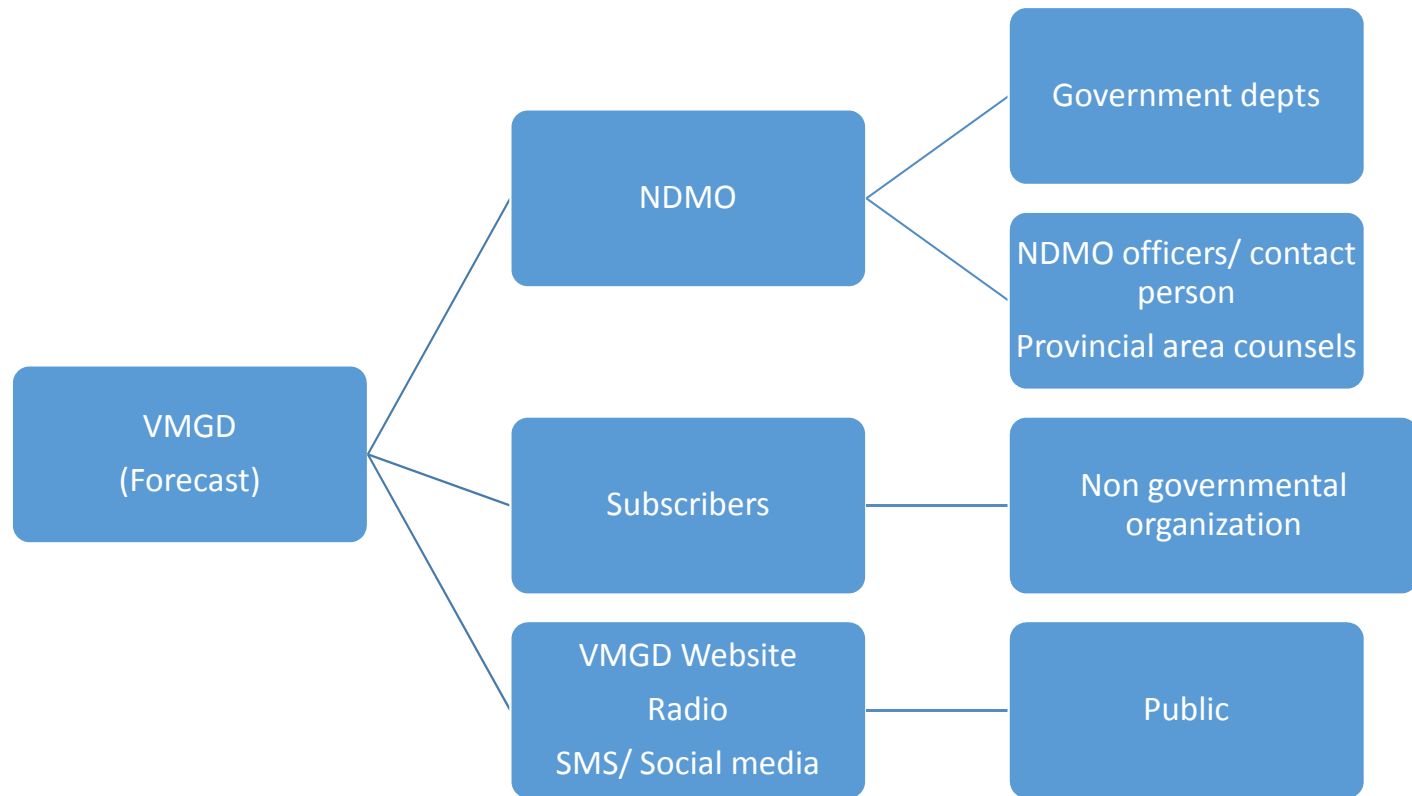


Total products issued during the passage of PAM

- Information 1
- Advisories 3
- Warnings 47
- Forecast track maps 48
- SMS (TVL, Digicel) 38



Flow of information (TC bulletins)





















THANK YOU