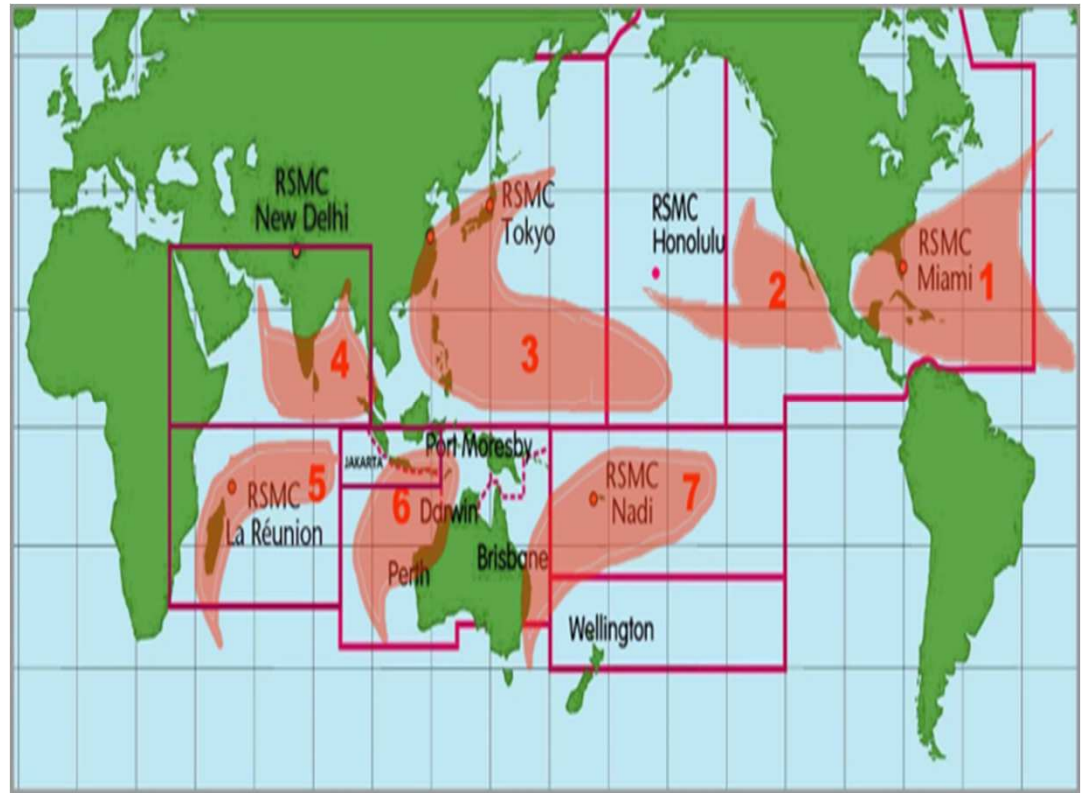


Nauru Met Service



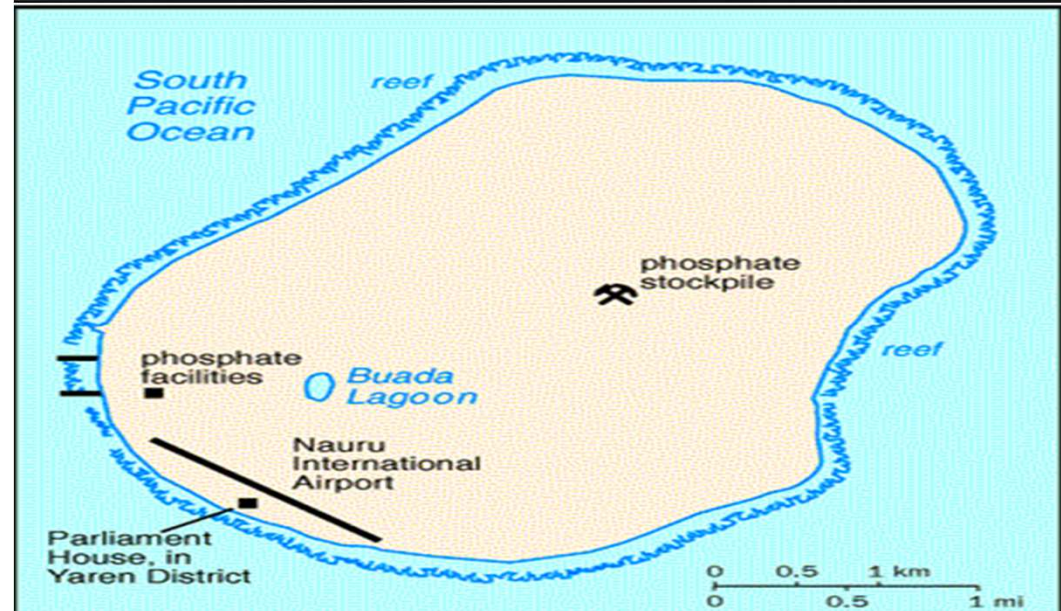
Content

- Geography
- Organization structure
- Natural disaster
- Met duty
- Impact on tropical cyclone
- Challenges



Geography

- Nauru is the smallest island located in the south pacific ocean, isolated island its only 53km south of the equator.
- Coordinate of 0.32 S 166.55 E
- Area: 21 square km
- Elevation: 65m
- Population: (Est) around 12,000
- Coastal line: 30km



Organization Structure

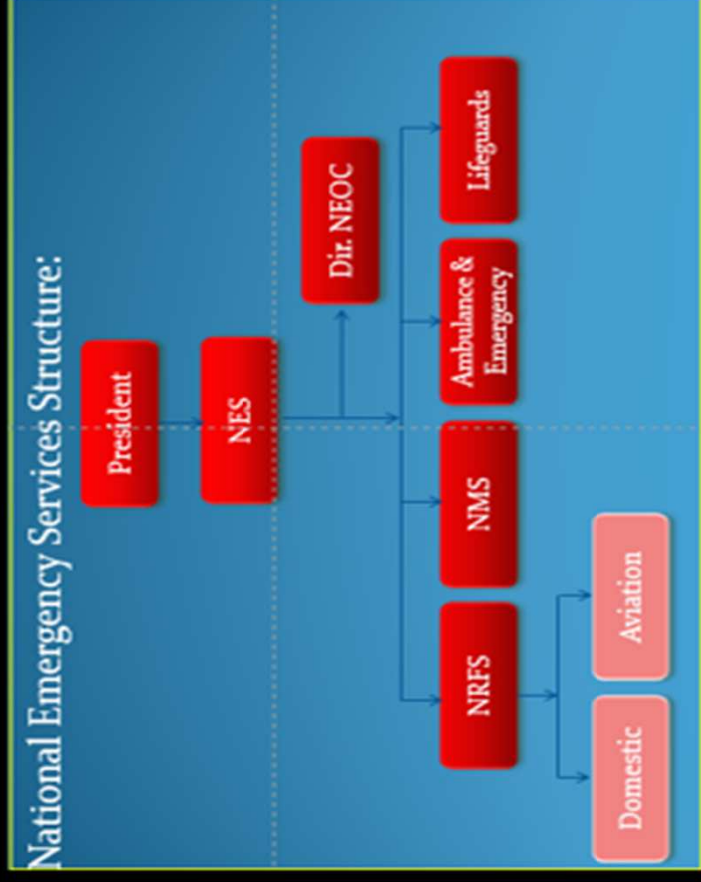
In May 2015 the government of Nauru approved to create a new department National Emergency Service (NES)

The Secretary for NES report directly to the President of Nauru.

Within NES a Director National Emergency Operation Centre.

Under NES department there are four section.

- Nauru Rescue fire service
- Nauru Meteorology Service
- Nauru Ambulance and Emergency
- Nauru Lifeguards



Natural disaster

- The influence of the west pacific Monsoon on Nauru generally varies with the phase and strength of the El nino (ENSO) is usually associated with strong El nino event. Being so close to the equator, Nauru does not experience tropical cyclone. Although it is subject to strong winds and sea swell.



Met Duties

| Nauru Meteorology Aeronautical Report Schedule | | | | | |
|---|--|---|--|--|--|
| Requirement for WMO and ICAO METAR must be report 8hrs prior for incoming Flight | | | | | |
| * EFFECTIVE 9th September 2019 | | | | | |
| NAURU AIRLINE FLIGHT SCHEDULE | | ROSTER | | | |
| DAYS | ARRIVING TIME INU | DAYS | IN | OUT | ON DUTY |
| SUN - MON | 01:50am / 1:25am | SUN - MON | 5:50pm | FLIGHT DEPART @ AM | GI |
| TUE | 2:55pm (14:55) / 3:10pm (15:10) | TUE | 6:55am | FLIGHT DEPART @ PM | RJ |
| WED | 12:10pm | WED | 4:10am | FLIGHT DEPART @ PM | TW |
| THUR | 1:35pm (13:35) | THUR | 5:35am | FLIGHT DEPART @ PM | SD |
| FRI | 04:05am / 04:10am | THUR - FRI | 8:05pm | FLIGHT DEPART @ AM | GI |
| SAT | NO FLIGHT | SAT | NO FLIGHT | | |
| * OFF DUTY STAFFS ARE RESPONSIBLE FOR THE ADDITIONAL FLIGHT THAT IS NOT ON THE NORMAL FLIGHT SCHEDULE | | | | | |
| METAR ISSUE: | PORT MORESBY | FIJI MET | NAURU AIRLINE OPERATION | NAURU AVIATION CONTROL TOWER | SecNES |
| EMAIL ADD: | Weatheraviation@gmail.com | naditcc@met.gov.fj | OPS.CONTROL@nauruairlines.com.au | c2rn70@gmail.com | royharris111@gmail.com |
| ICAO Requirement - ANNEX 3: BASE & REGULATION - CHAPTER.4 | | | | | |
| CLAUSE 4.3.3 | METAR | At aerodromes that are not operating throughout 24hrs, METAR shall be issued prior to the aerodrome resuming operations in accordance with regional air navigation agreement. | | | |
| CLAUSE 4.4.3 | SPECI | At aerodromes that are not operating throughout 24hrs, SPECI shall be issued following the resumption of the issuance of METAR, as necessary | | | |
| ROSTER | | | | | |
| RAIN FALL DATA - MAX & MIN TEMP | | | FORECAST @ 12PM | | |
| DAYS | IN | ON DUTY | IN | ON DUTY | |
| MON | 9AM | GI | 12PM | GI | |
| TUE | 9AM | RJ | 12PM | GI | |
| WED | 9AM | TW | 12PM | GI | |
| THUR | 9AM | SD | 12PM | SD | |
| FRI | 9AM | GI | 12PM | GI | |
| SAT | 9AM | TW | 12PM | SD | |
| SUN | 9AM | TW | 12PM | SD | |
| RAIN FALL MAX & MIN MUST BE | | | FORECAST @ 12PM | | |
| NAURU MET STAFF CONTACT NUMBER | | | | | |
| NAME | GRAYMEA | SEBY | RICKY | TIANA | |
| PHONE | 5572952 | 5564834 | 5569937 | 5569433 | |

Nauru Weather Update

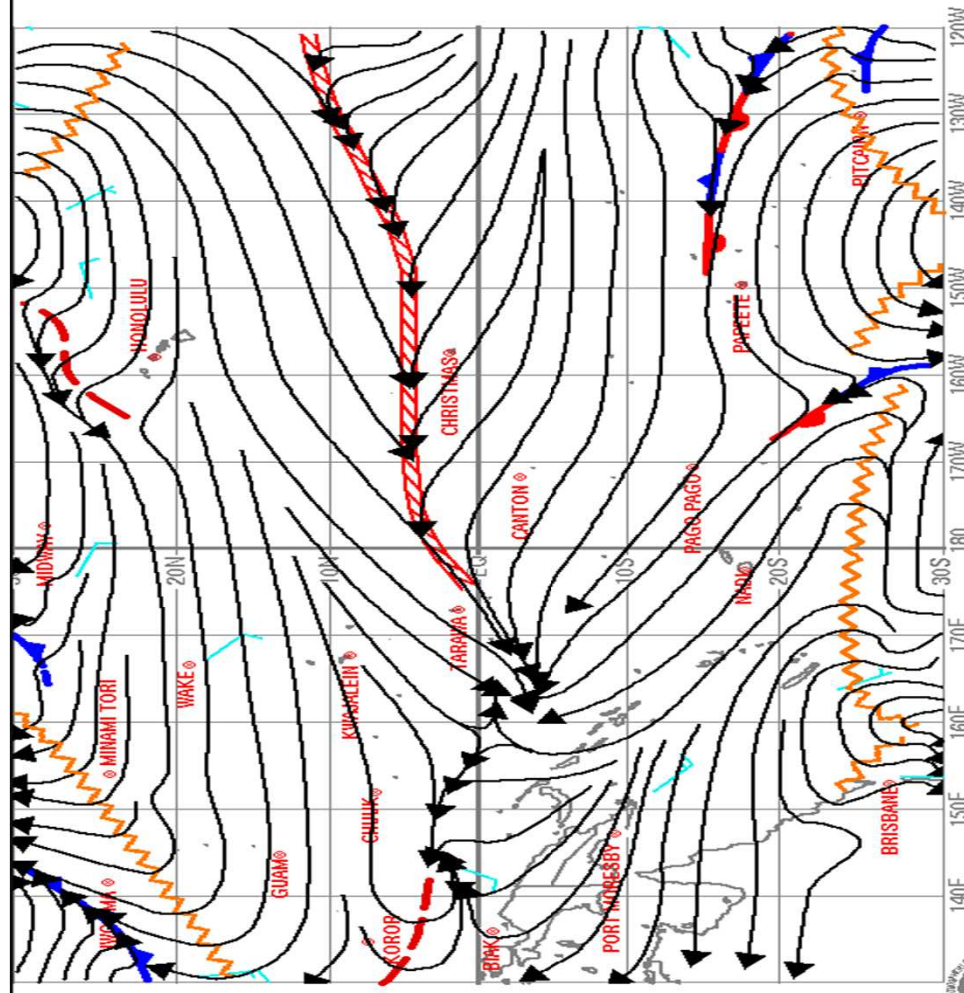
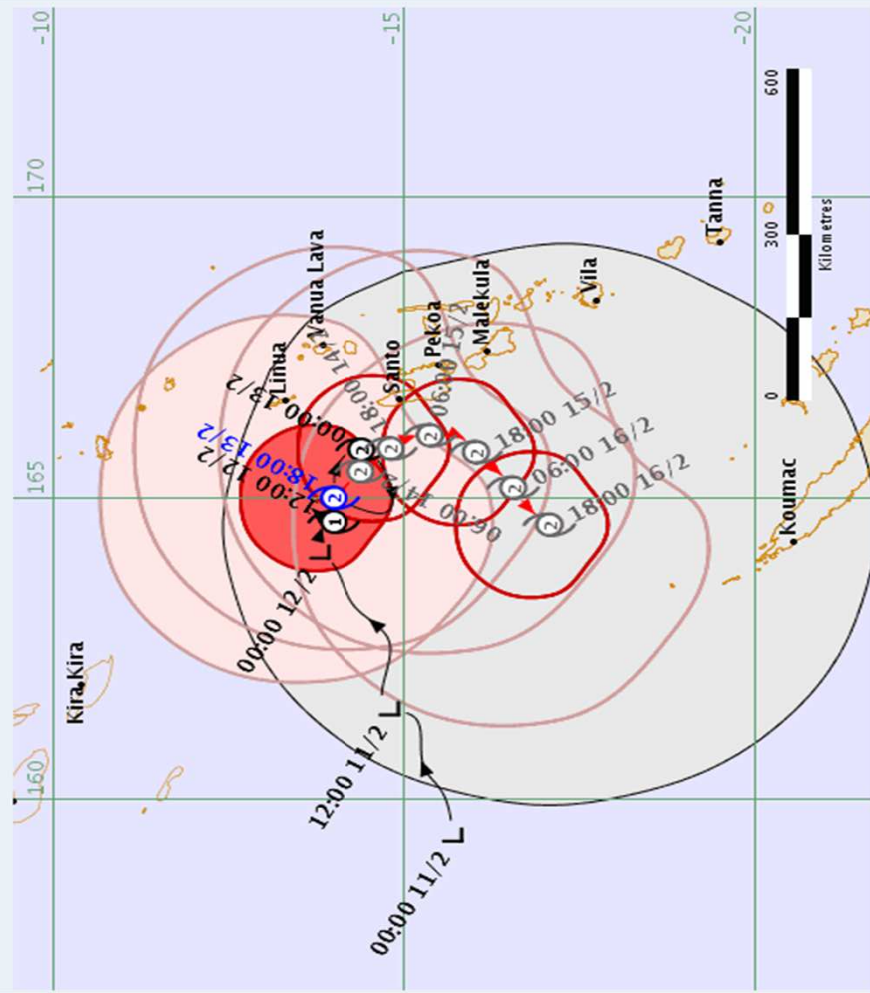
Valid 03rd September 2019 from 12pm to 00am local time

| | |
|-----------|--|
| Wind | SW @3 to 7KT Gusting 16KT |
| Cloud | Partly to cloudy |
| Pressure | 101ohpa |
| Rain | 0.2mm to 3.5mm |
| Temp | Max 30*c Min 24 *c |
| RH | 78% |
| Marine | Wave/ height 1.4m southeasterly period 9sec Swell/ 1m southeasterly period 9sec slight to moderate seas Temperature 30*c |
| Situation | A trough of low pressure slowly moving over Nauru, light to moderate wind flow, associated with cloudy period some showers. Tonight, possible showers of rain. |

TROPICAL CYCLONE FORECAST TRACK MAP

Tropical Cyclone OMA

Tropical Cyclone Warning Number 74 issued 1939 UTC Wednesday 13 February 2019



PACIFIC STREAMLINE ANALYSIS - JUN 15 2019 - 18 UTC

KVM-70 U.S. Dept. of Commerce/NOAA/National Weather Service Honolulu, Hawaii



Challenges

- Nauru met service does not have a weather bulletin website in place yet, therefore our organization is planning to develop and launch our Nauru met service website for the first time.
- Nauru met service also having short staff.
- Building Capacity training.

Thank You
Vinaka
Tubwa