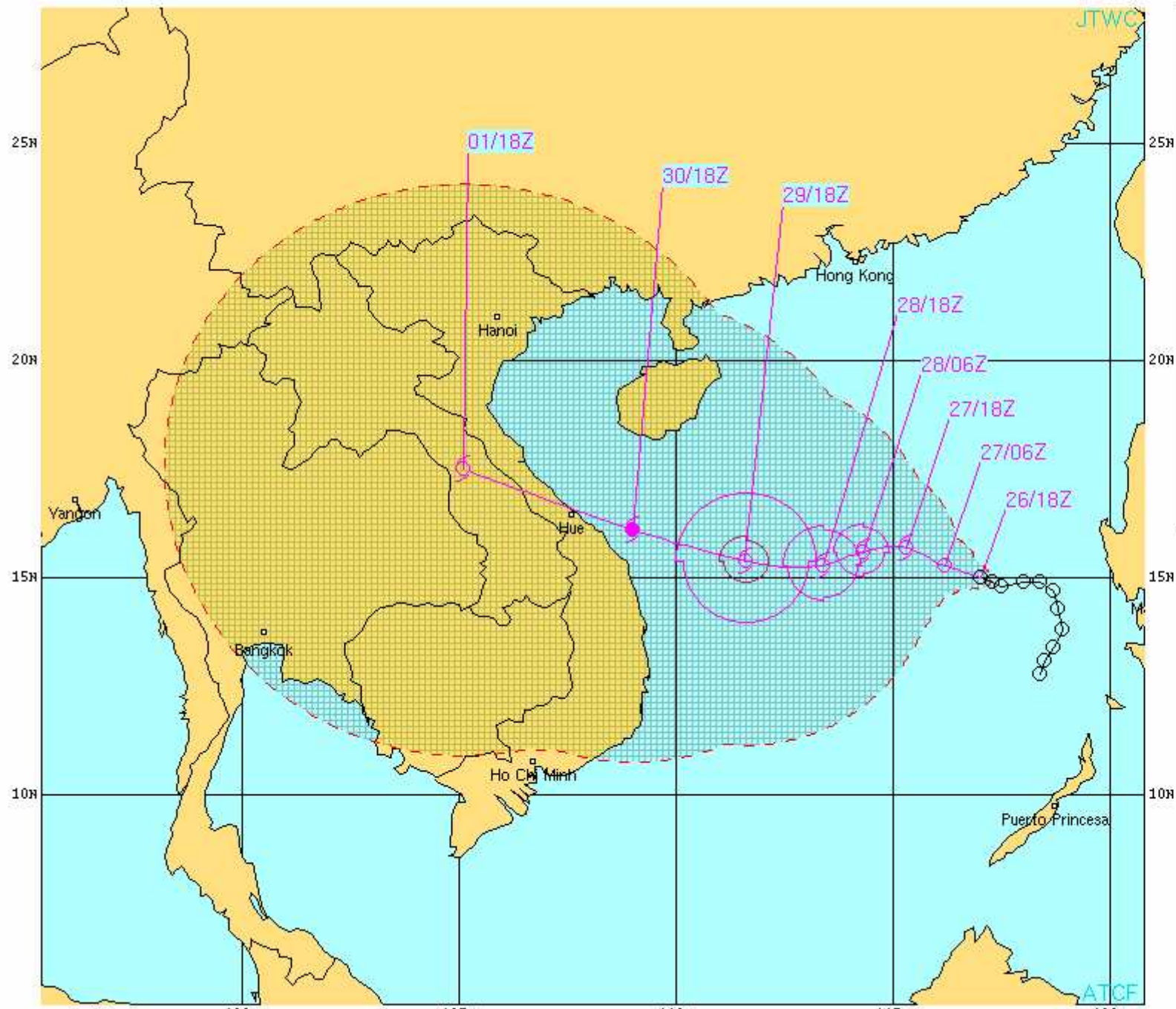


Tropical Cyclone Forecast Exercise

Using Web-ATCF
Or
Slides (alternate)

Exercise Overview and Objectives

- Using web-ATCF, determine current best-track position and intensity
 - Review previous position and intensity
 - Review previous forecast
- Make track and intensity forecast
 - Consider current structure and intensity
 - Consider latest numerical and statistical-dynamical forecast aids
 - Consider last forecast
 - Consider any TC structure, location or intensity issues not covered or addressed by last forecast.



TROPICAL DEPRESSION 20W
 WTPN32 PGW 262100
 261800Z POSIT: NEAR 15.0N
 MOVING 290 DEGREES TRUE /
 MAXIMUM SIGNIFICANT WAVE
 26/18Z, WINDS 025 KTS, 61
 27/06Z, WINDS 030 KTS, 61
 27/18Z, WINDS 035 KTS, 61
 28/06Z, WINDS 040 KTS, 61
 28/18Z, WINDS 045 KTS, 61
 29/18Z, WINDS 060 KTS, 61
 30/18Z, WINDS 065 KTS, 61
 01/18Z, WINDS 035 KTS, 61

CPA TO:	NM
HANOI	214
HONG_KONG	397
HO_CHI MINH_CITY	344
DA_NANG	18

BEARING AND DISTANCE

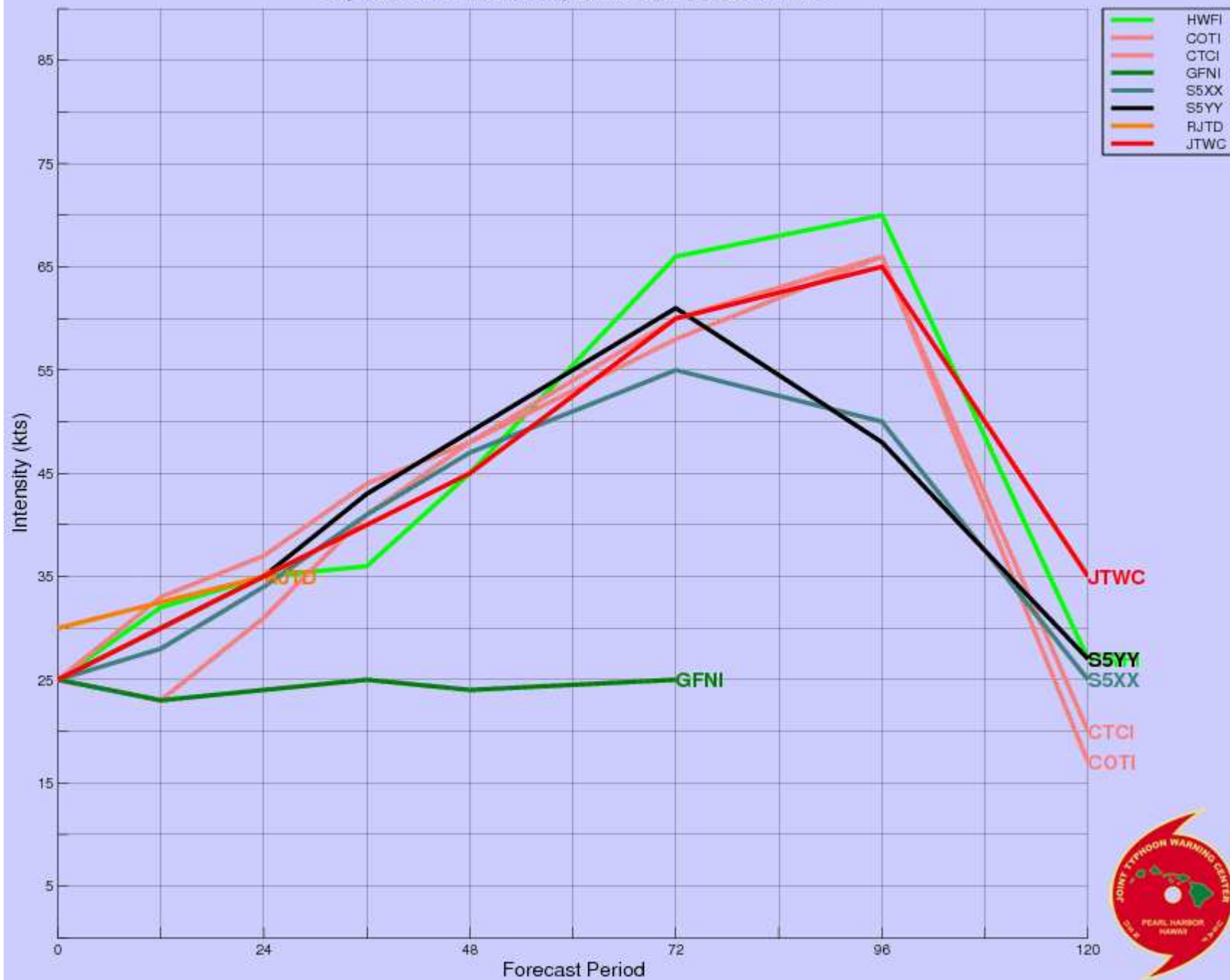
MANILA
 SUBIC_BAY

○ LESS THAN 34 KNOTS
 ⊗ 34-63 KNOTS
 ⊛ MORE THAN 63 KNOTS
 PAST 6 HOURLY CYCLONE POS
 FORECAST CYCLONE POSITS I

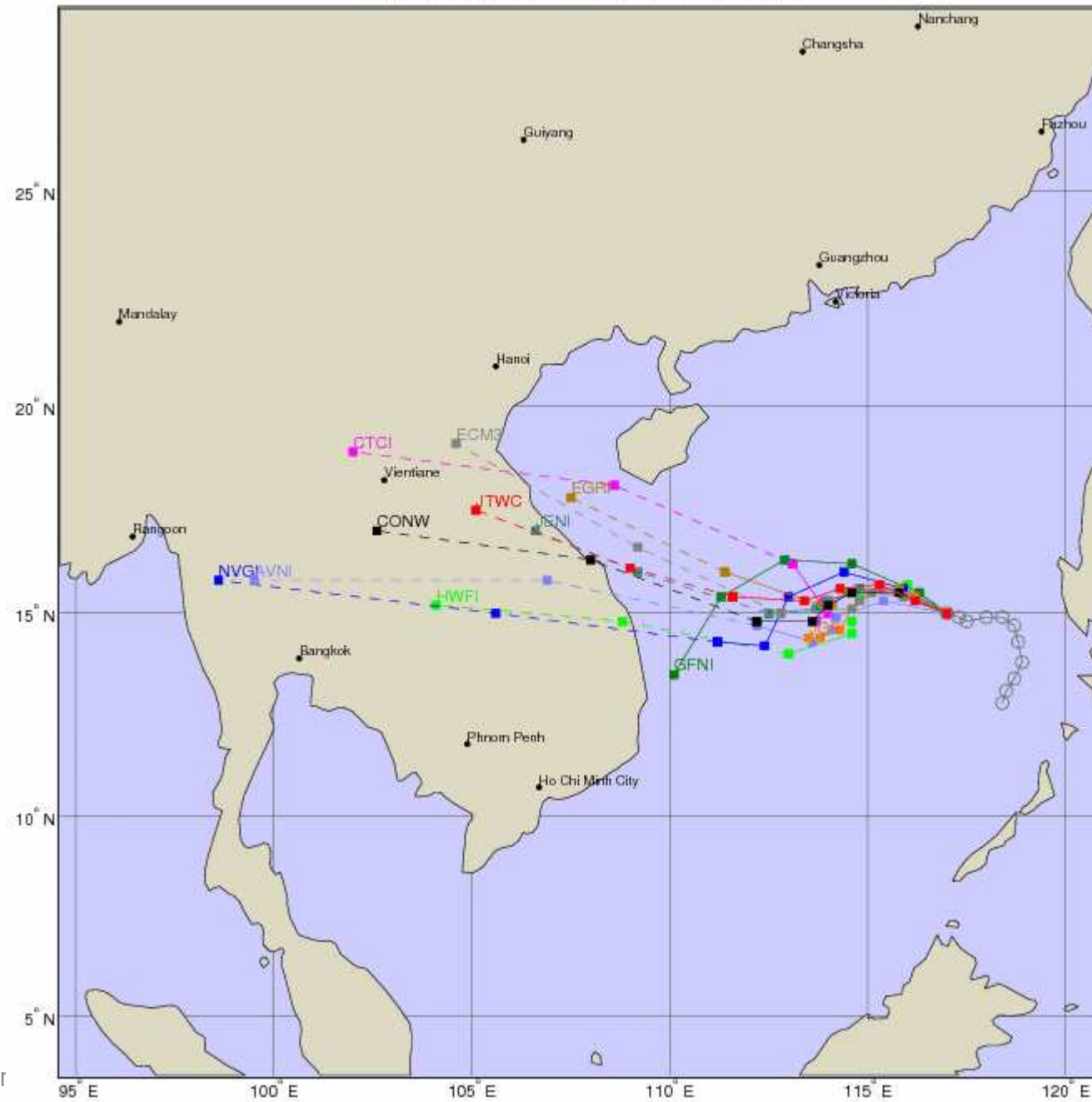
Review Current “Conditions”

- Current water vapor loop
- Current numerical model fields
 - [NAVGEM](#)
 - [GFS](#)

Objective Aid Time Intensity for TD 20W for 2013092618

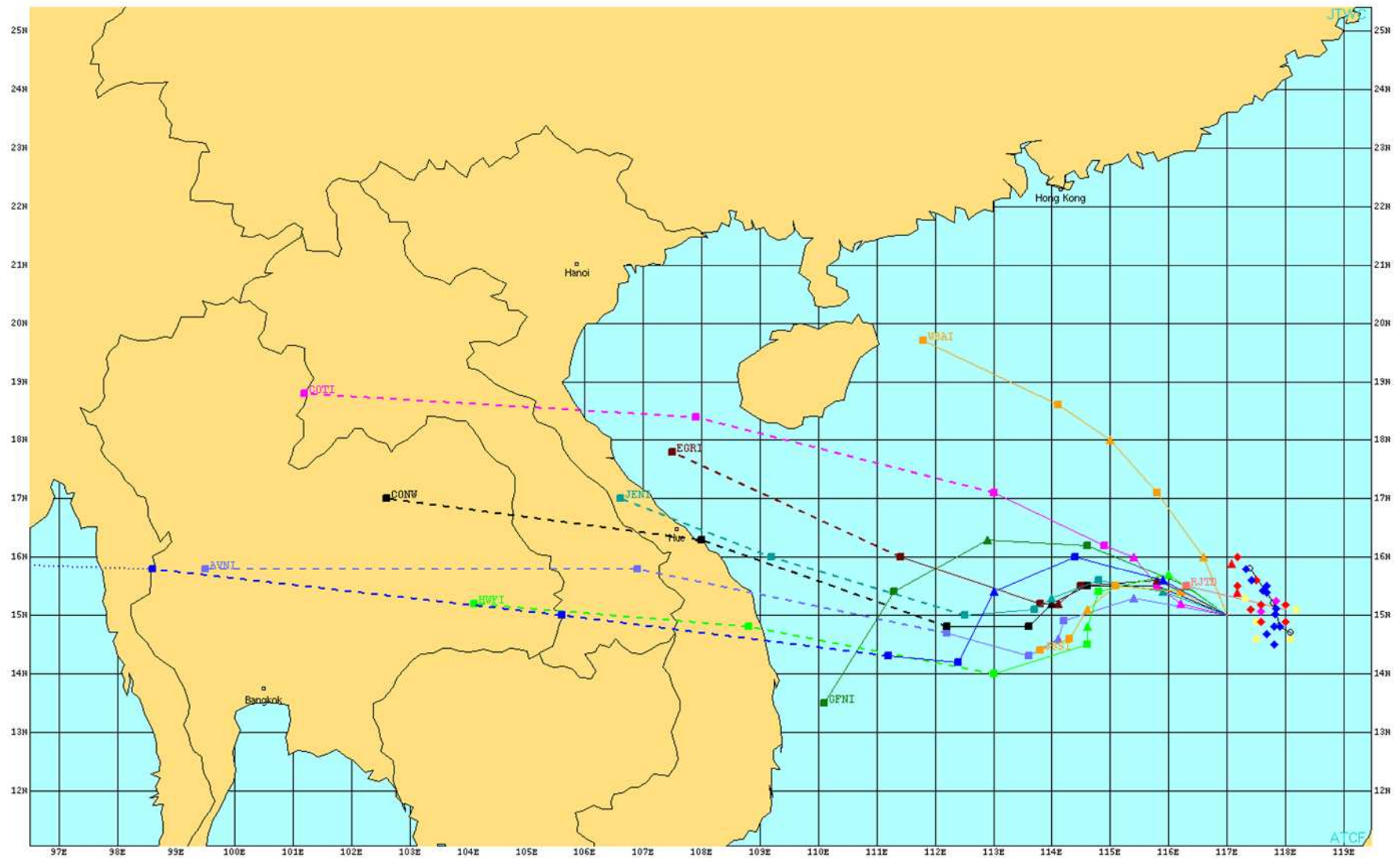


Objective aids for TD 20W for 2013092618



13 Mar



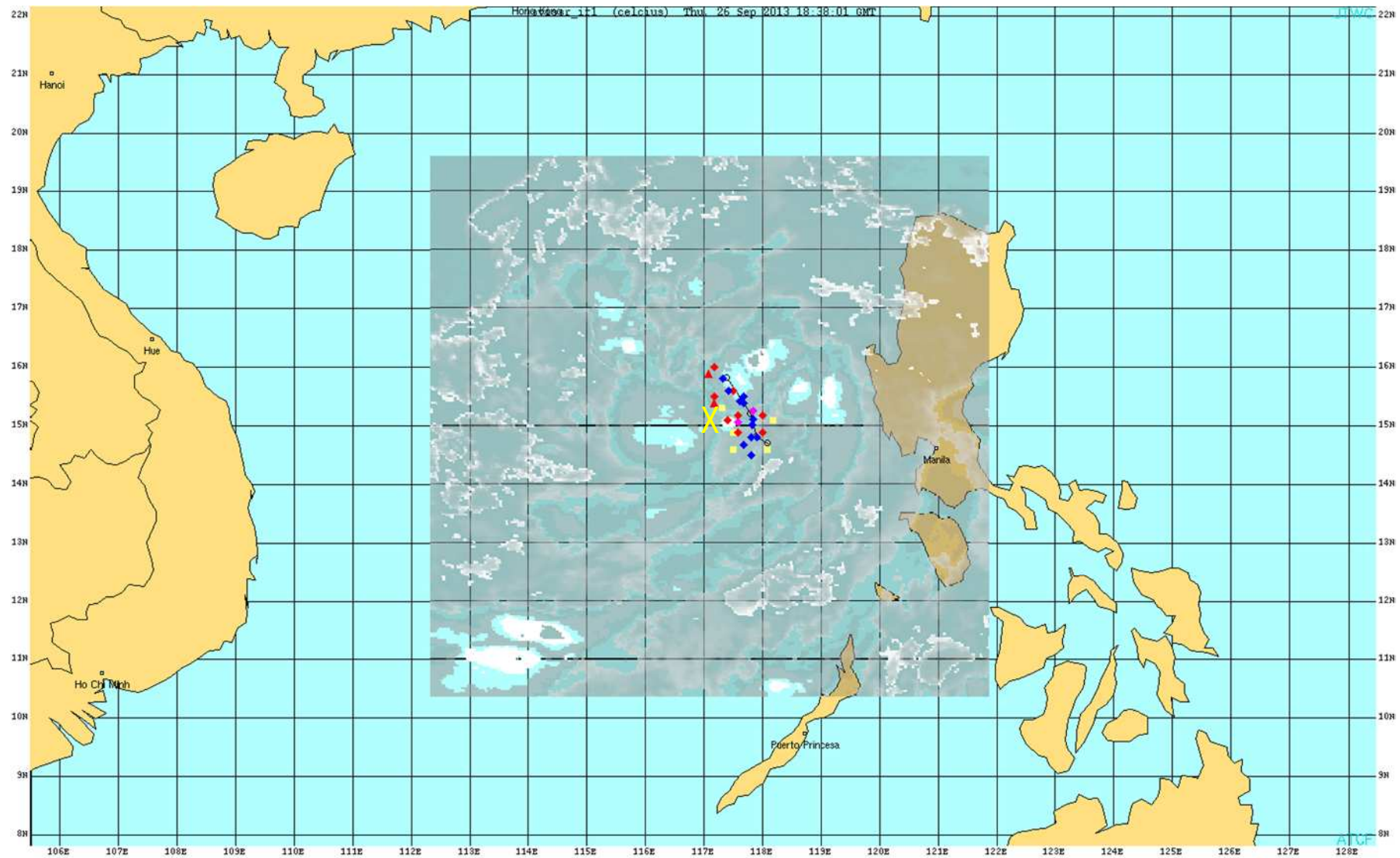


13 March 2014

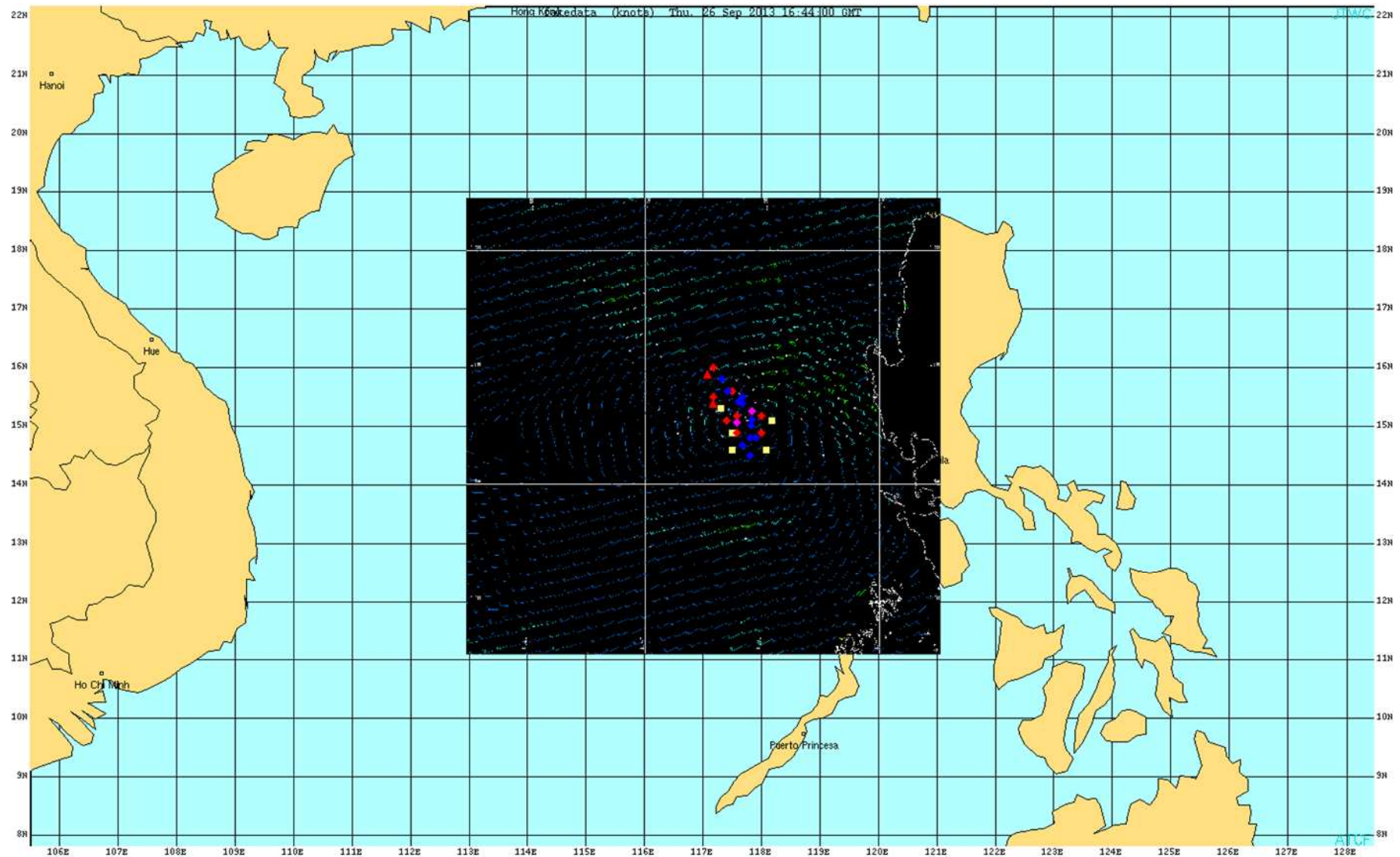
JMA/WMO Forecaster Training

7

261732Z MTSAT IRBD



261544Z OSCAT

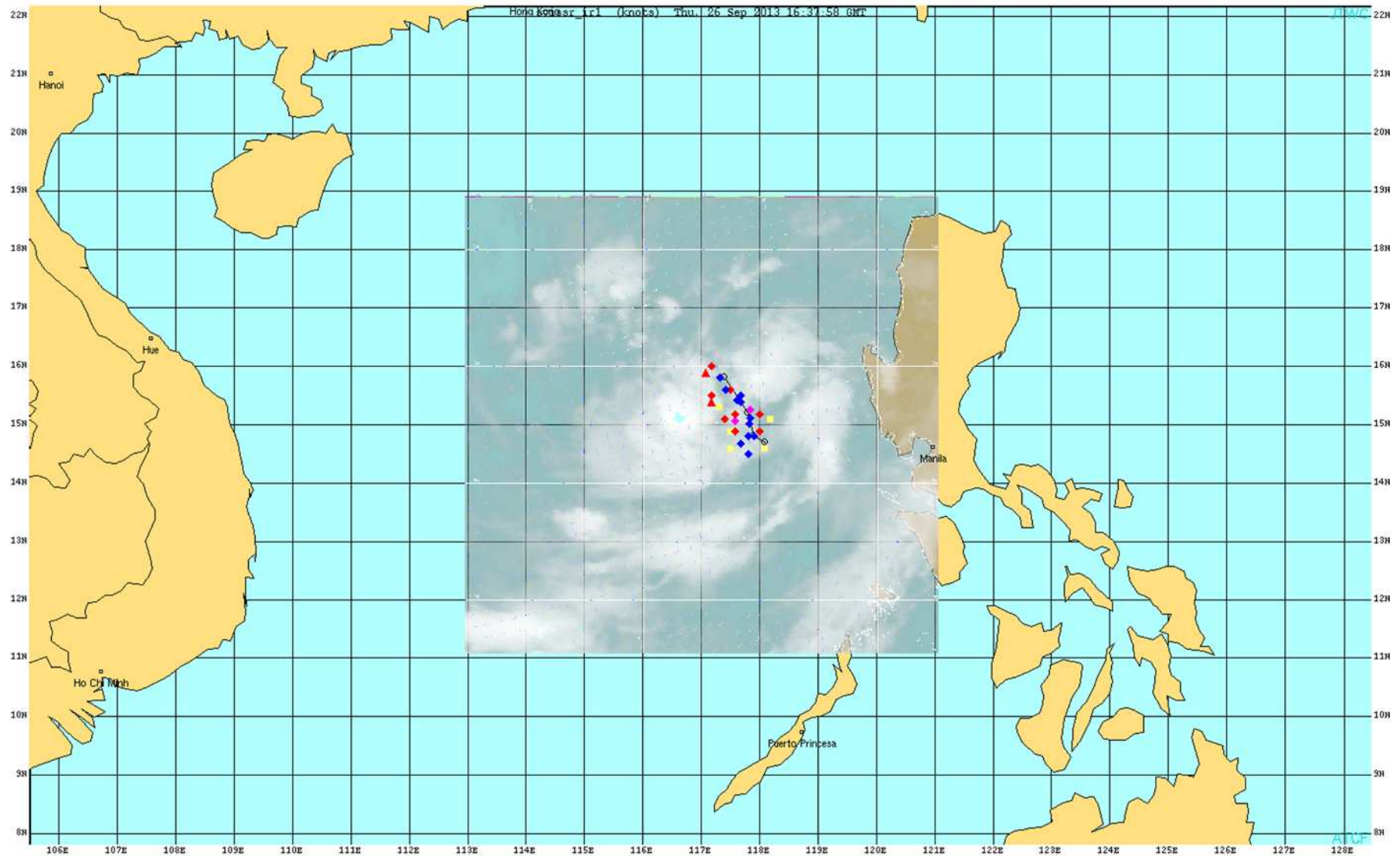


13 March 2014

JMA/WMO Forecaster Training

9

261544Z OSCAT Ambiguity

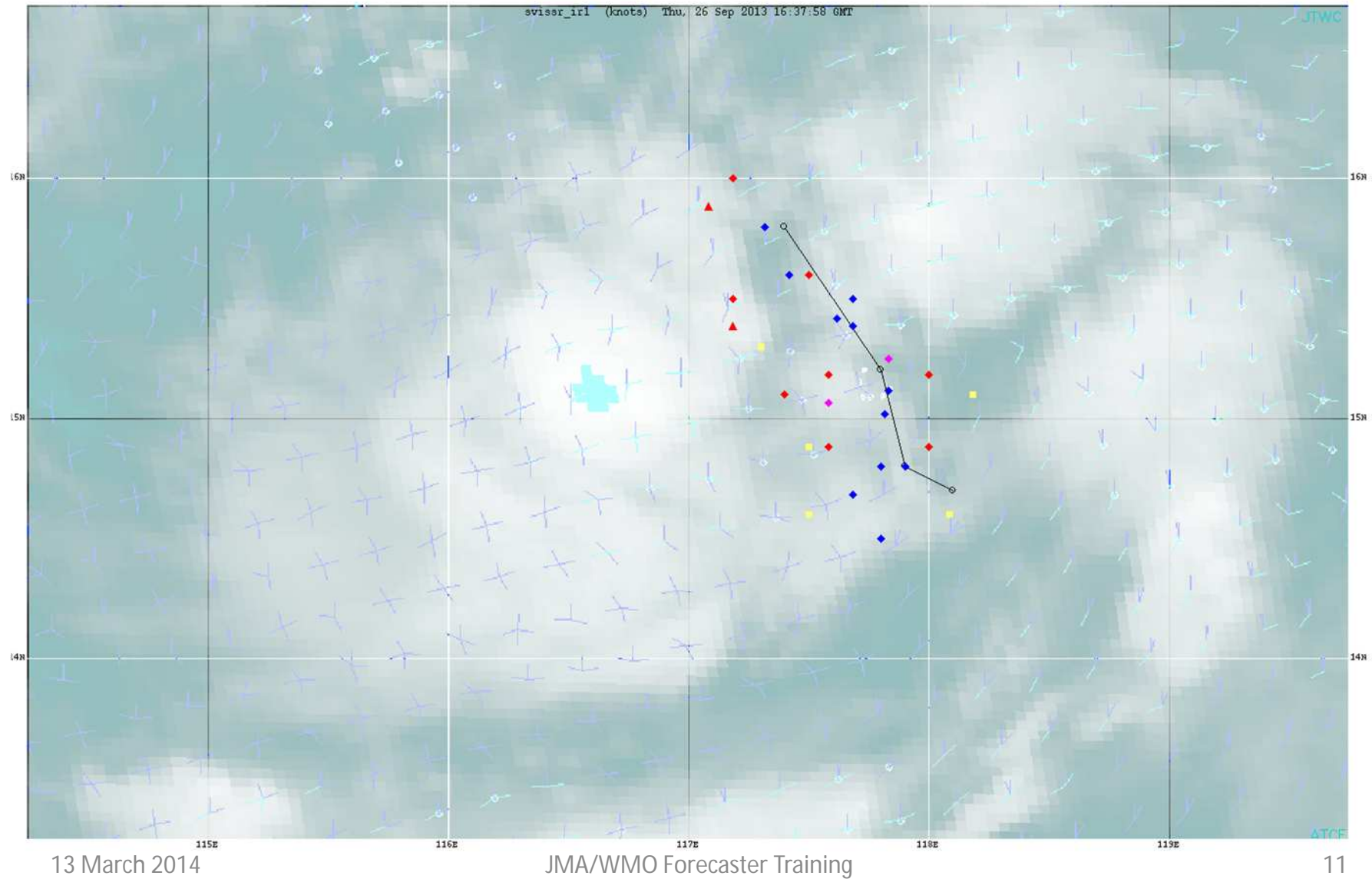


13 March 2014

JMA/WMO Forecaster Training

10

261544Z OSCAT Ambiguity Zoomed



JTWC TDO Log

26/18Z: FIRST WARNING

A. 15.0N 117.0E 25 kts. PBO EIR loop and
ascat. IBO T1.5 fix from PGTW, KNES, and
KJTD. ADL/TQP

B. 15.8N 117.4E 25 kts. PBO 1849Z 2km
VIS. IBO 1.5 from all agencies and 1544Z
OSCAT. TJM

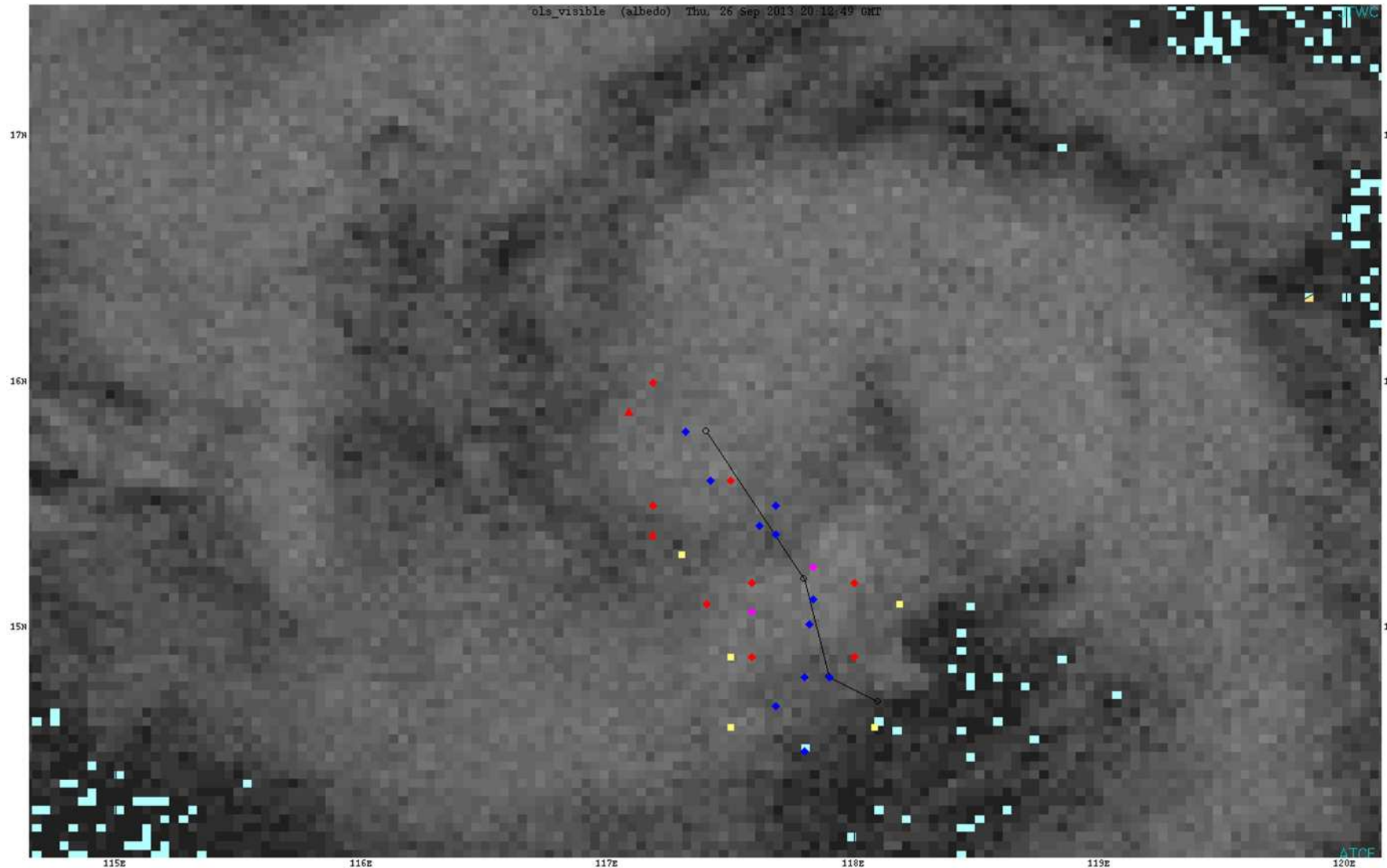
JTWC TDO Log

26/18Z: FIRST WARNING

A. 15.0N 117.0E 25 kts. PBO EIR loop and
ascat. IBO T1.5 fix from PGTW, KNES, and
KJTD. ADL/TQP

B. 15.8N 117.4E 25 kts. PBO 1849Z 2km
VIS. IBO 1.5 from all agencies and 1544Z
OSCAT. TJM

261849Z DMSP F15 2km VIS

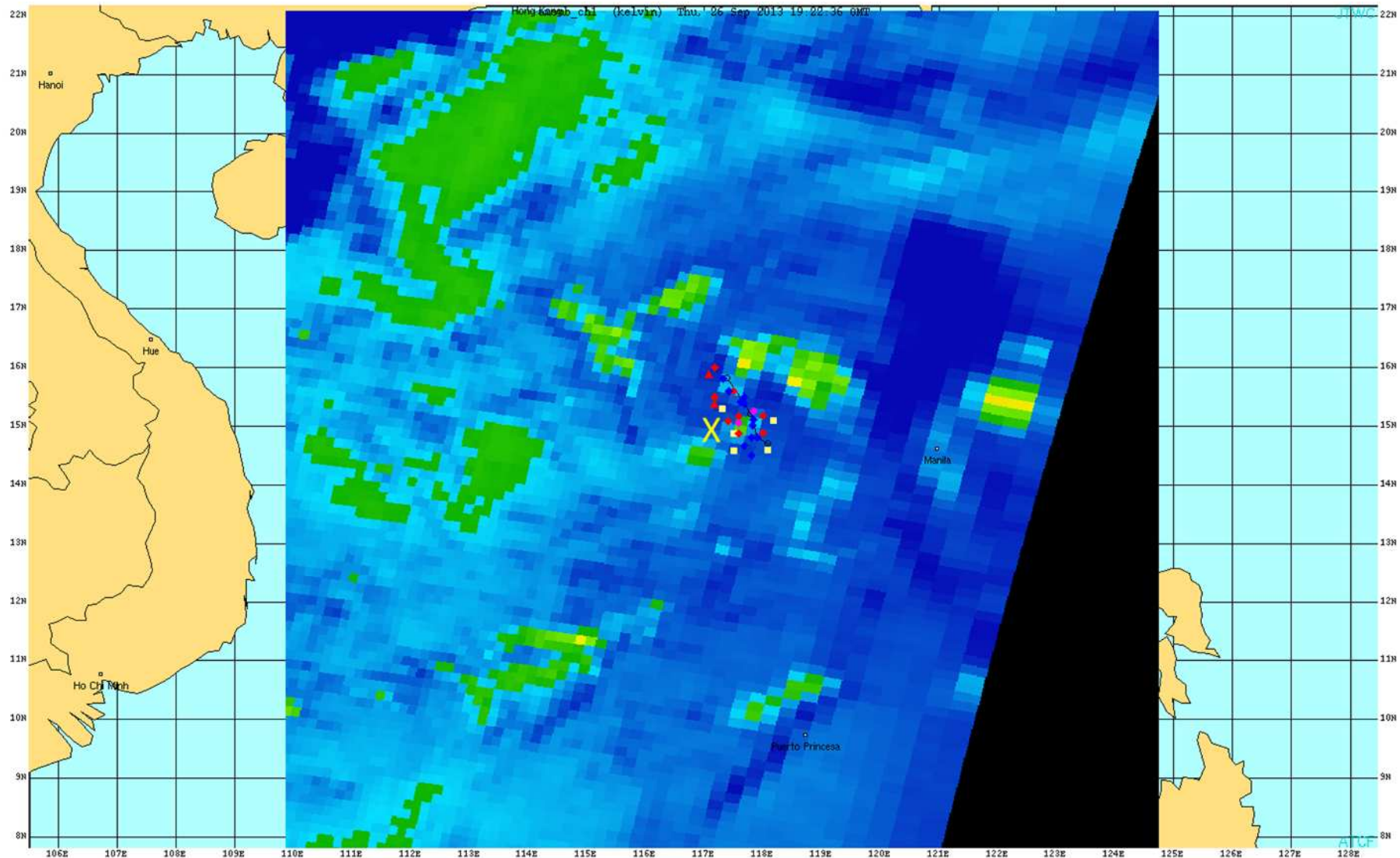


13 March 2014

JMA/WMO Forecaster Training

14

261820Z Noaa19 89H Microwave



13 March 2014

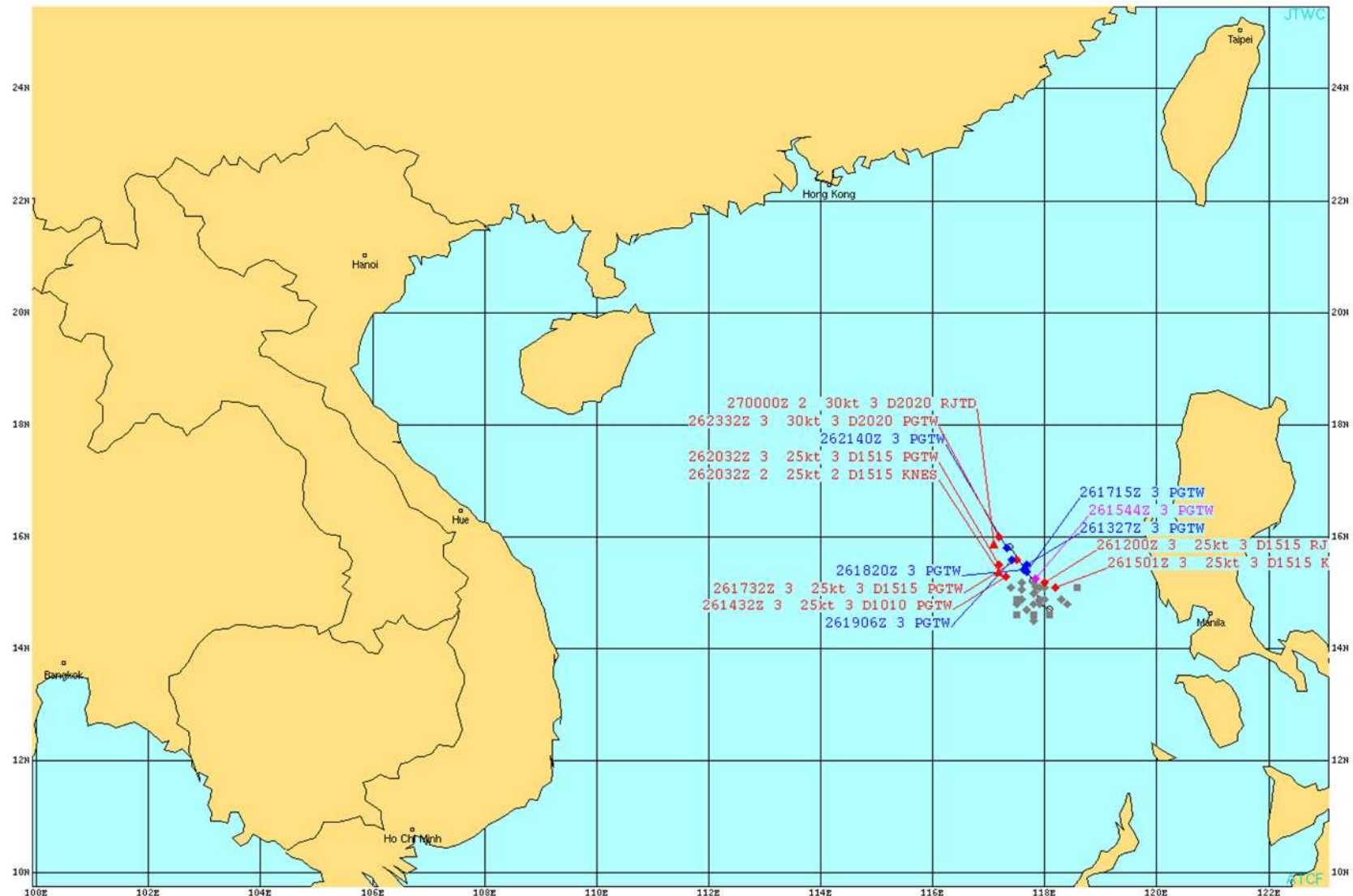
JMA/WMO Forecaster Training

15

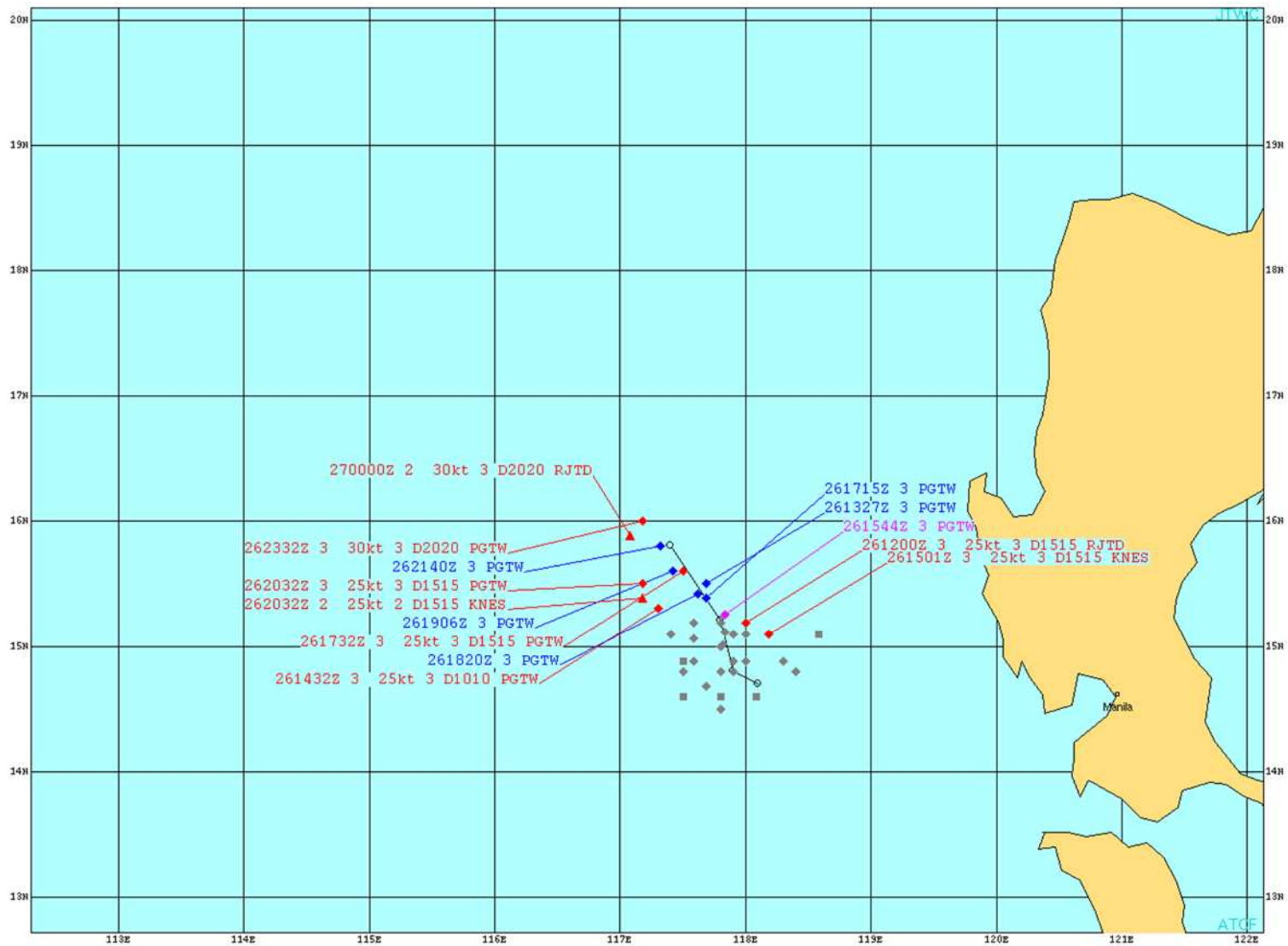
To-do; Major Items

- Determine 00Z position and intensity
 - Submit bogus
 - Run aids and view
 - Determine track forecast
 - Determine intensity forecast
 - Produce warning message and graphics
-Move to web-atcf, if practical.....

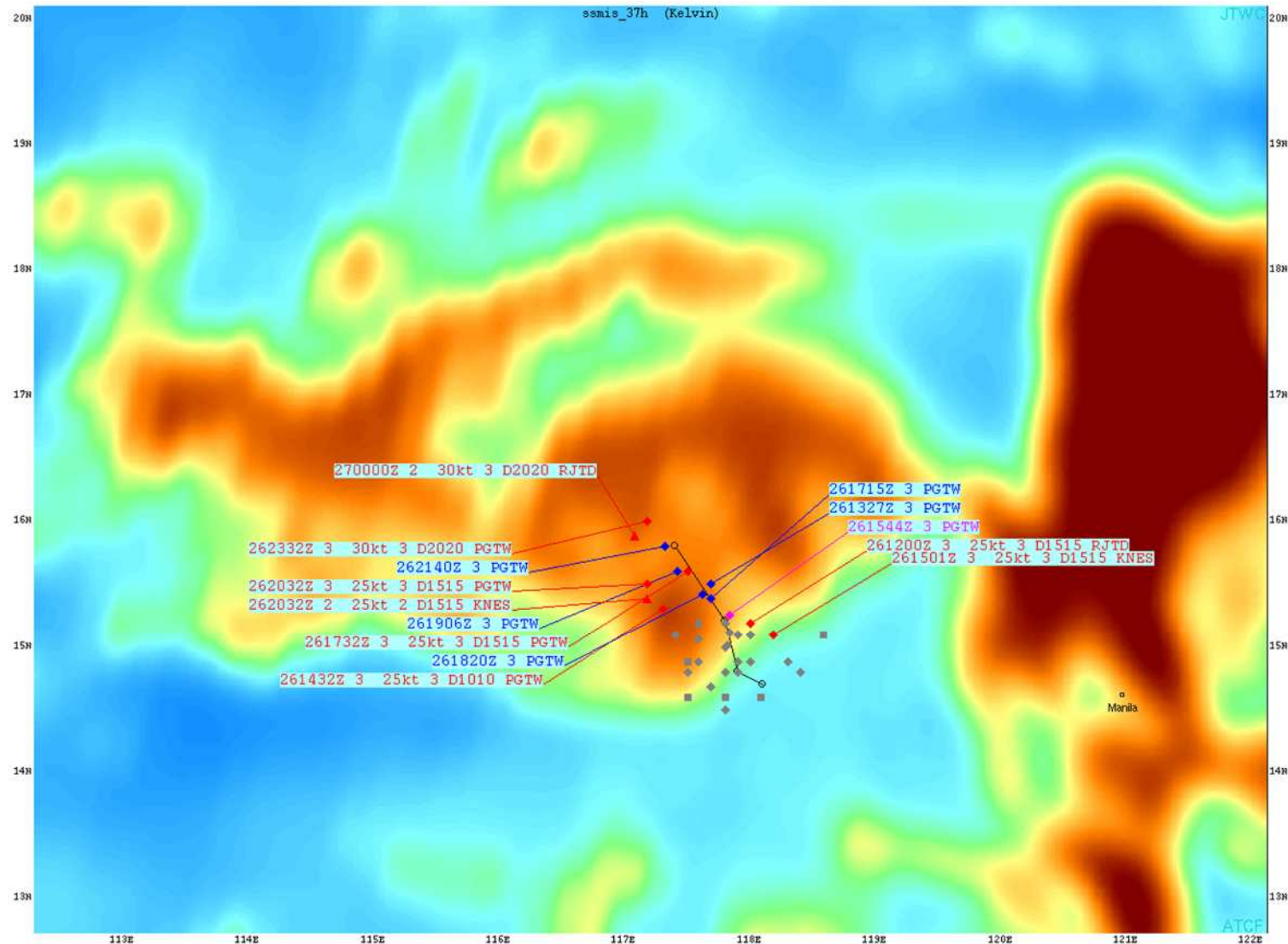
27/00Z Fixes



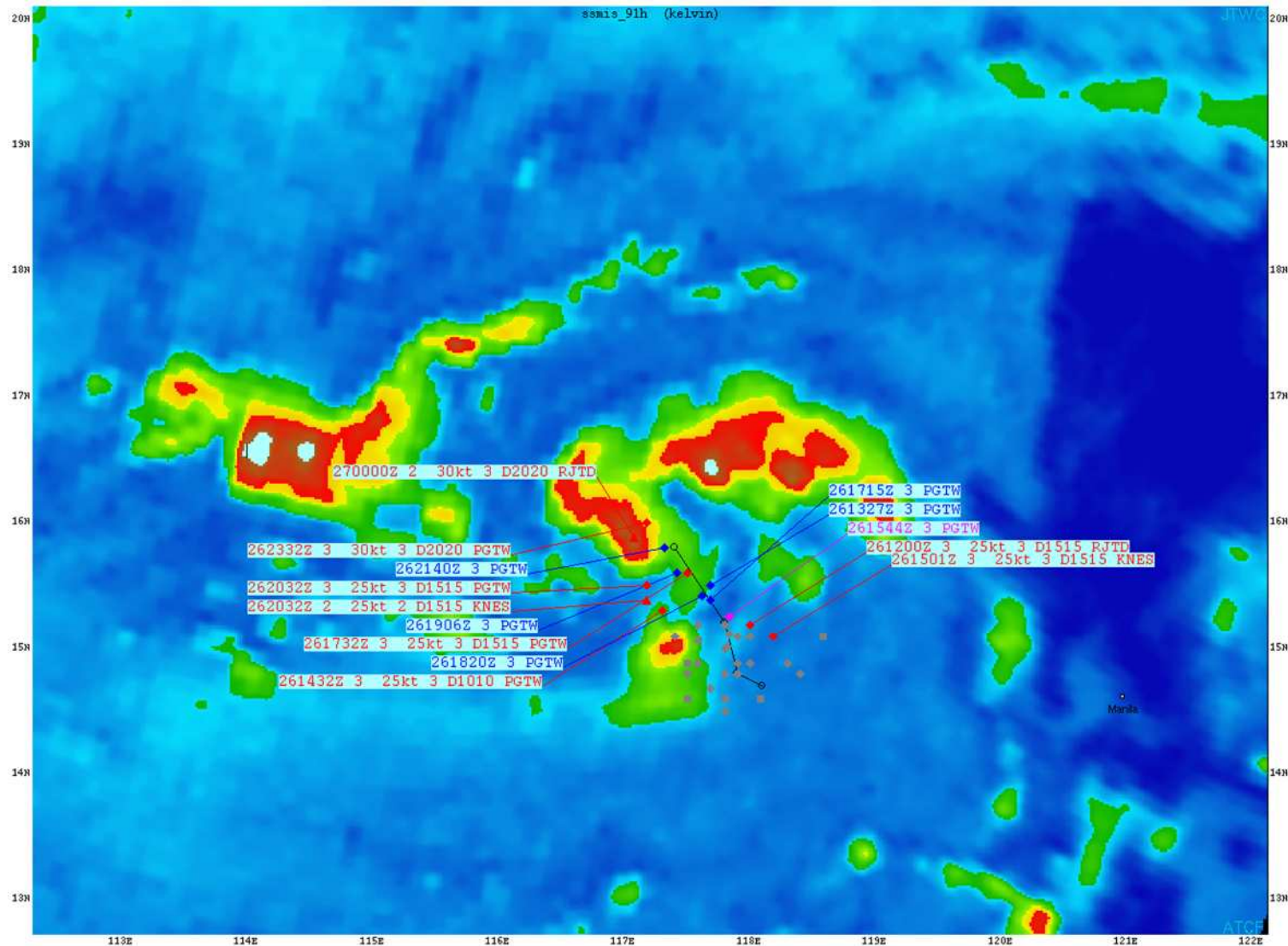
27/00Z Fixes (zoomed)



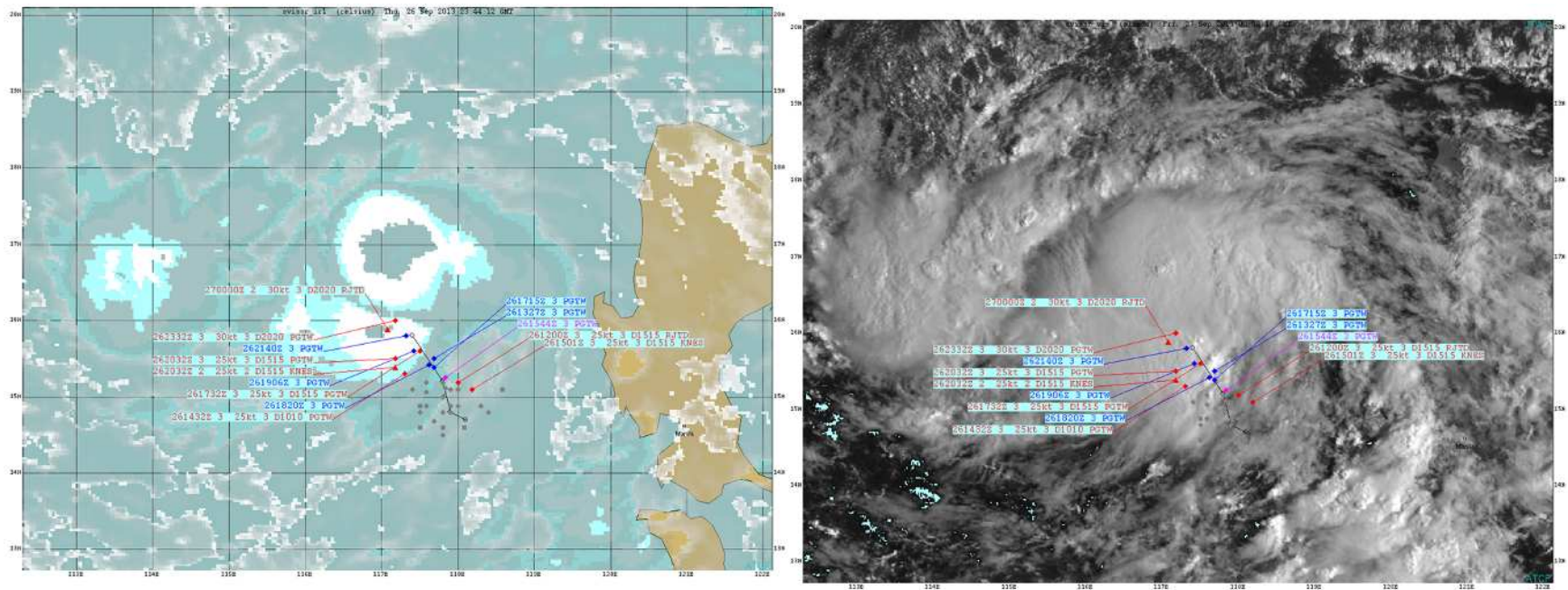
262140Z DMSP SSMIS 37h



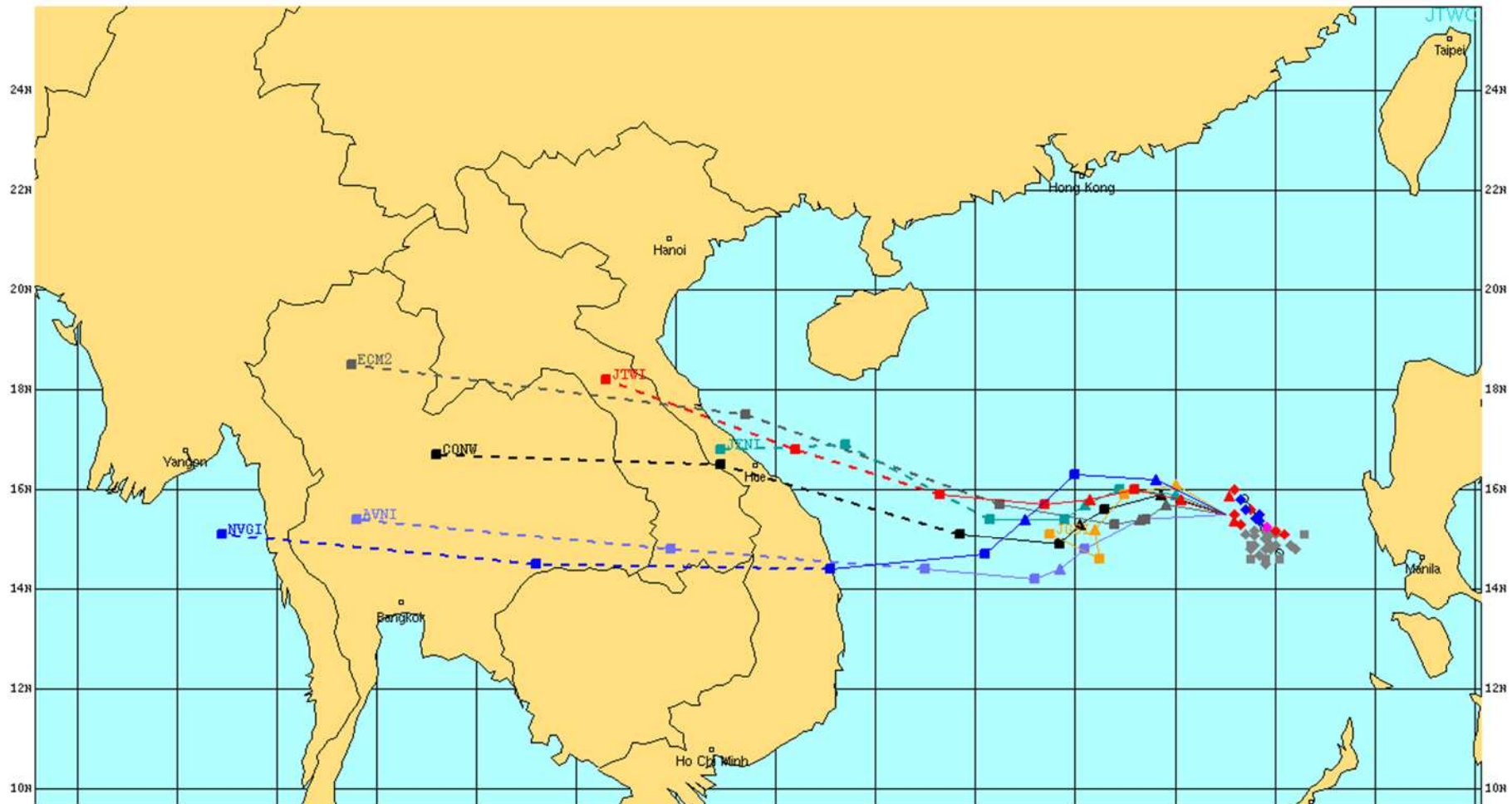
262140Z DMSP SSMIS 91H



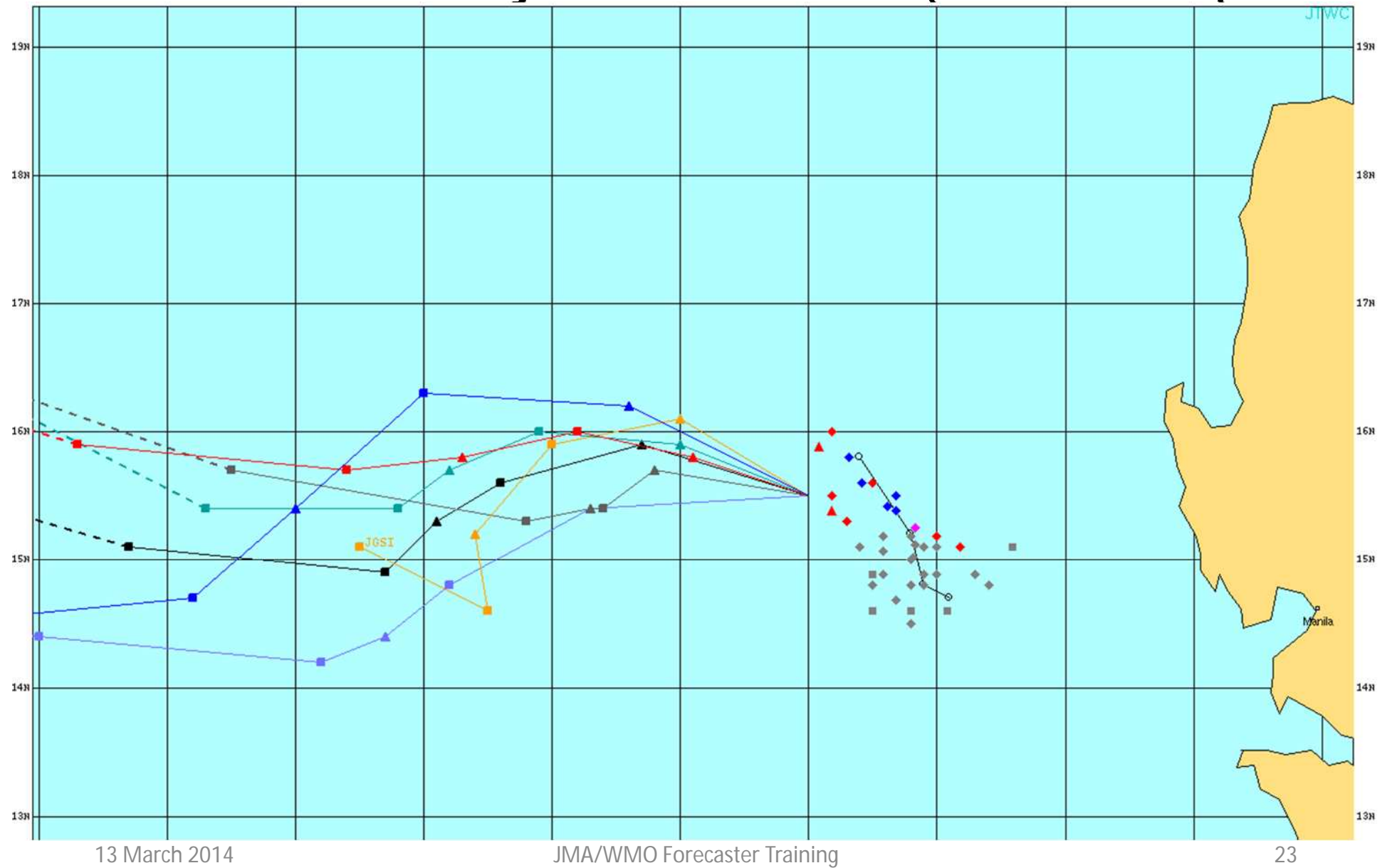
MTSAT 262332Z IR-BD & VIS



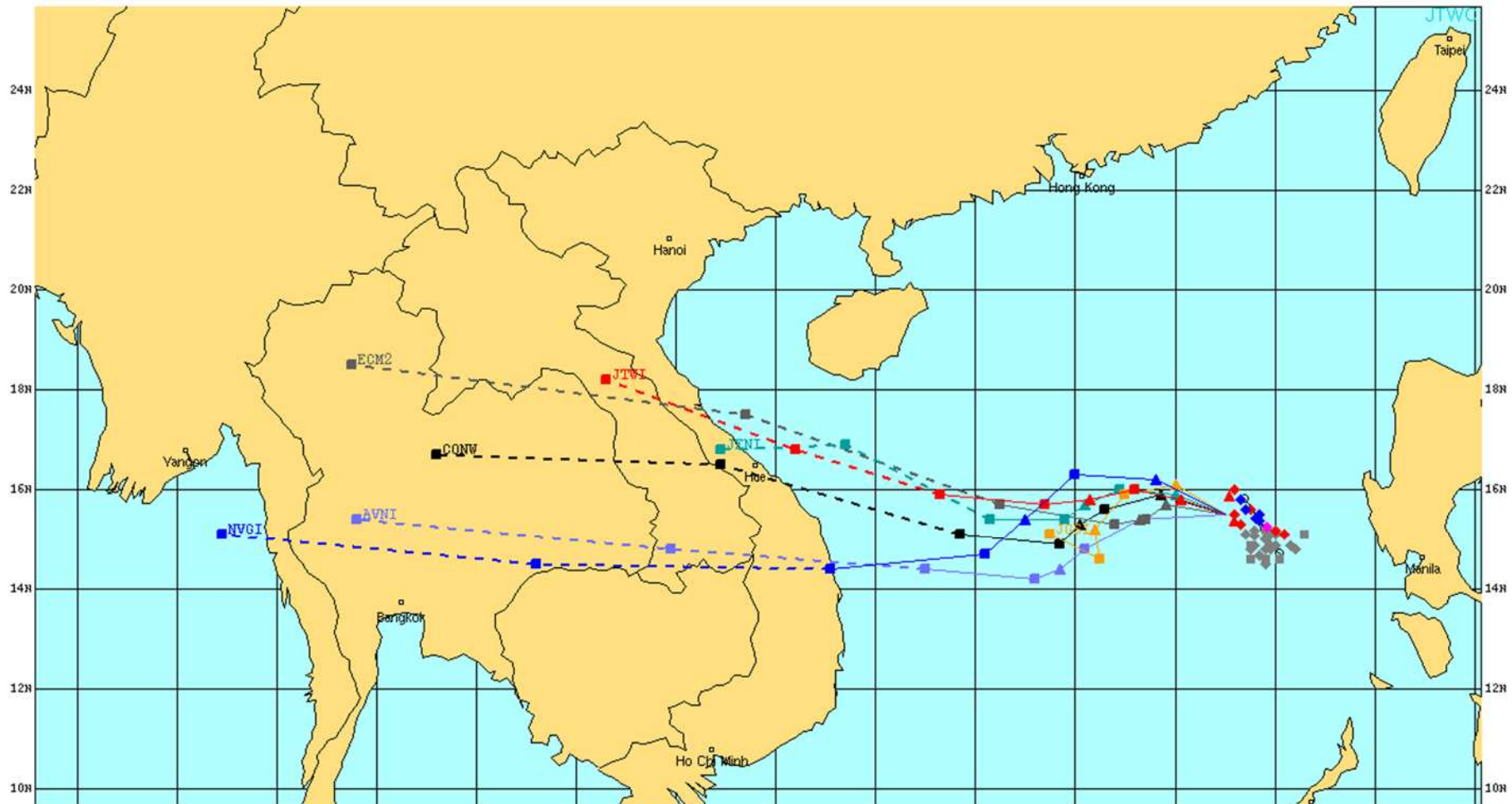
27/00Z Objective Aids



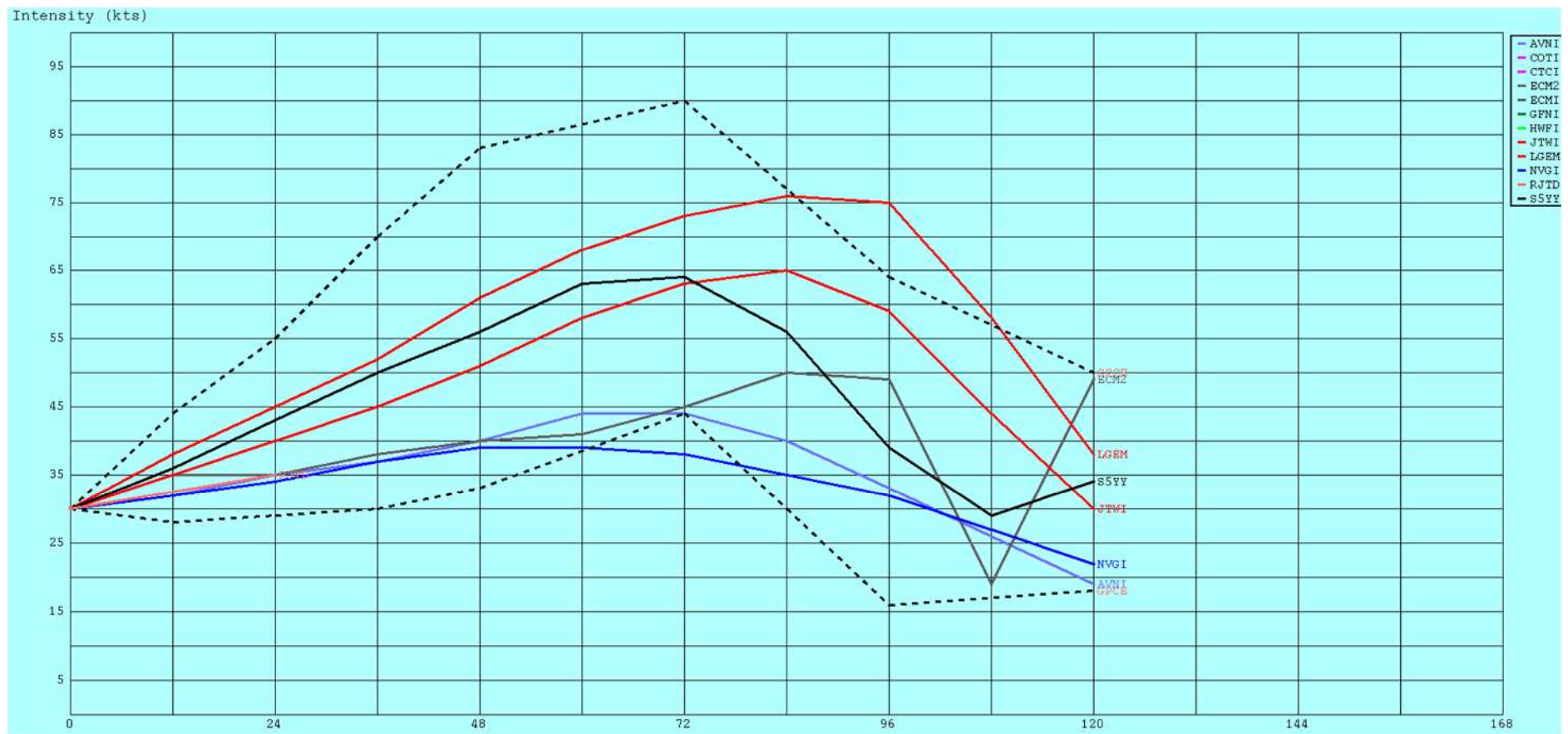
27/00Z Objective Aids (zoomed)



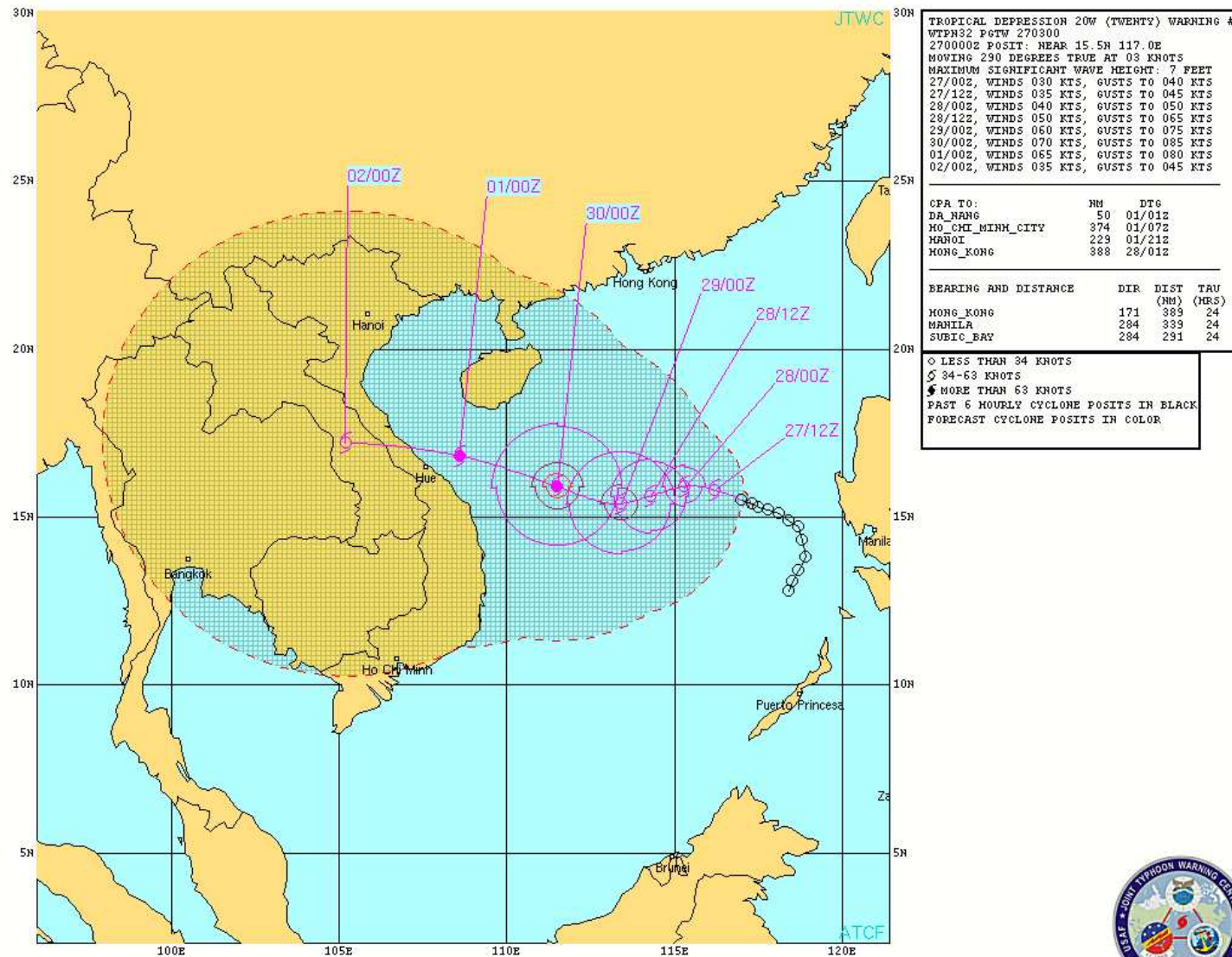
27/00Z Objective Aids



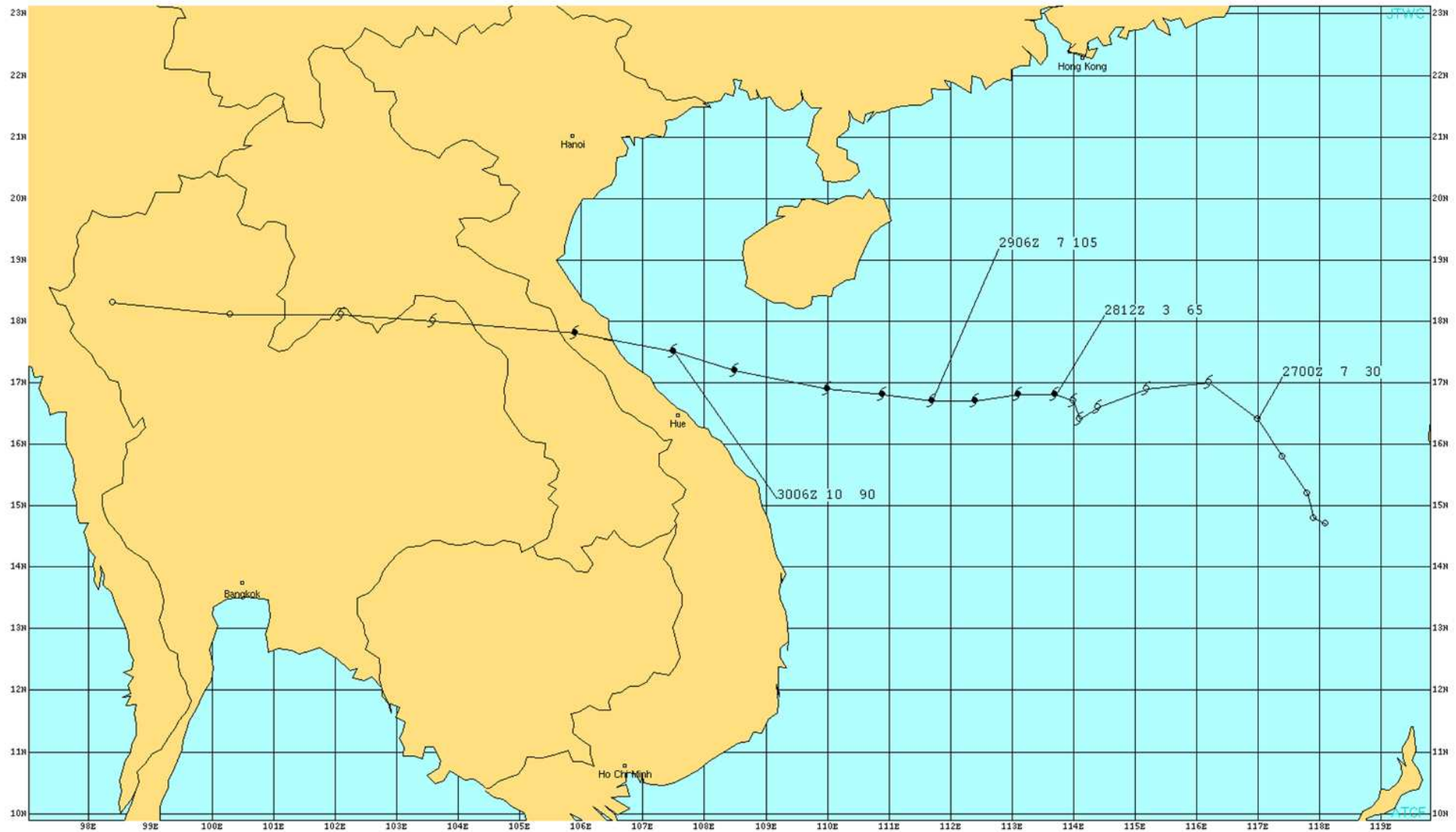
27/00Z Intensity Aids



27/00Z JTWC Warning Graphic



TY 20W (WUTIP) Sep 2013



Obj. Aid Time Intensity for 20W

Intensity (kts)

95
85
75
65
55
45
35
25
15
5

0927 00Z 0928 00Z 0929 00Z 0930 00Z 1001 00Z 1002 00Z 1003 00Z 1004 00Z

TY 20W Intensity Curve & S5YY Intensity Forecasts

