



Phase Space Diagram 1

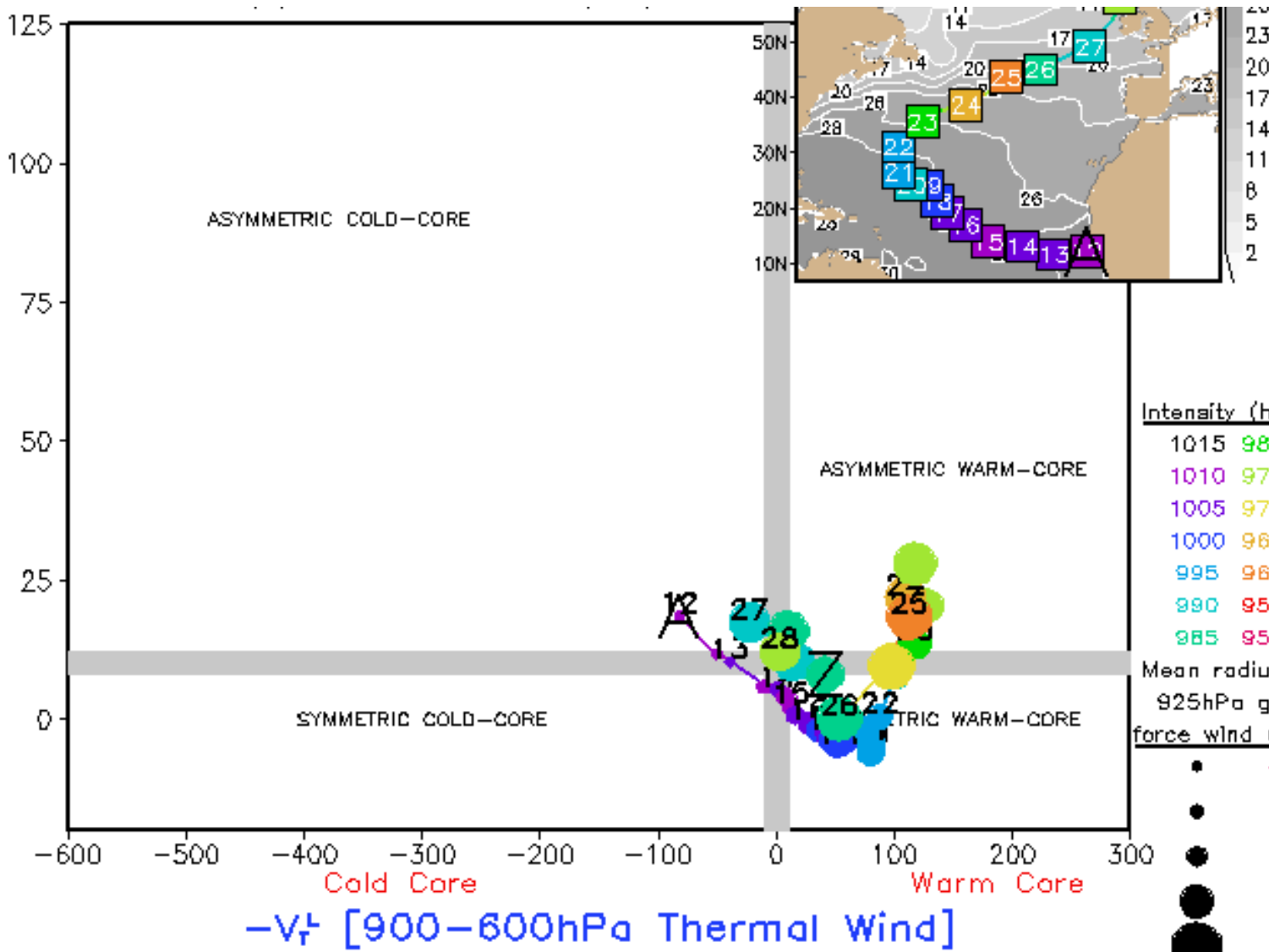
UKMET Analysis



B [900-600hPa Storm-Relative Thickness Symmet

Asymmetric
(Frontal)

Symmetric
(Nonfrontal)



Cold Core

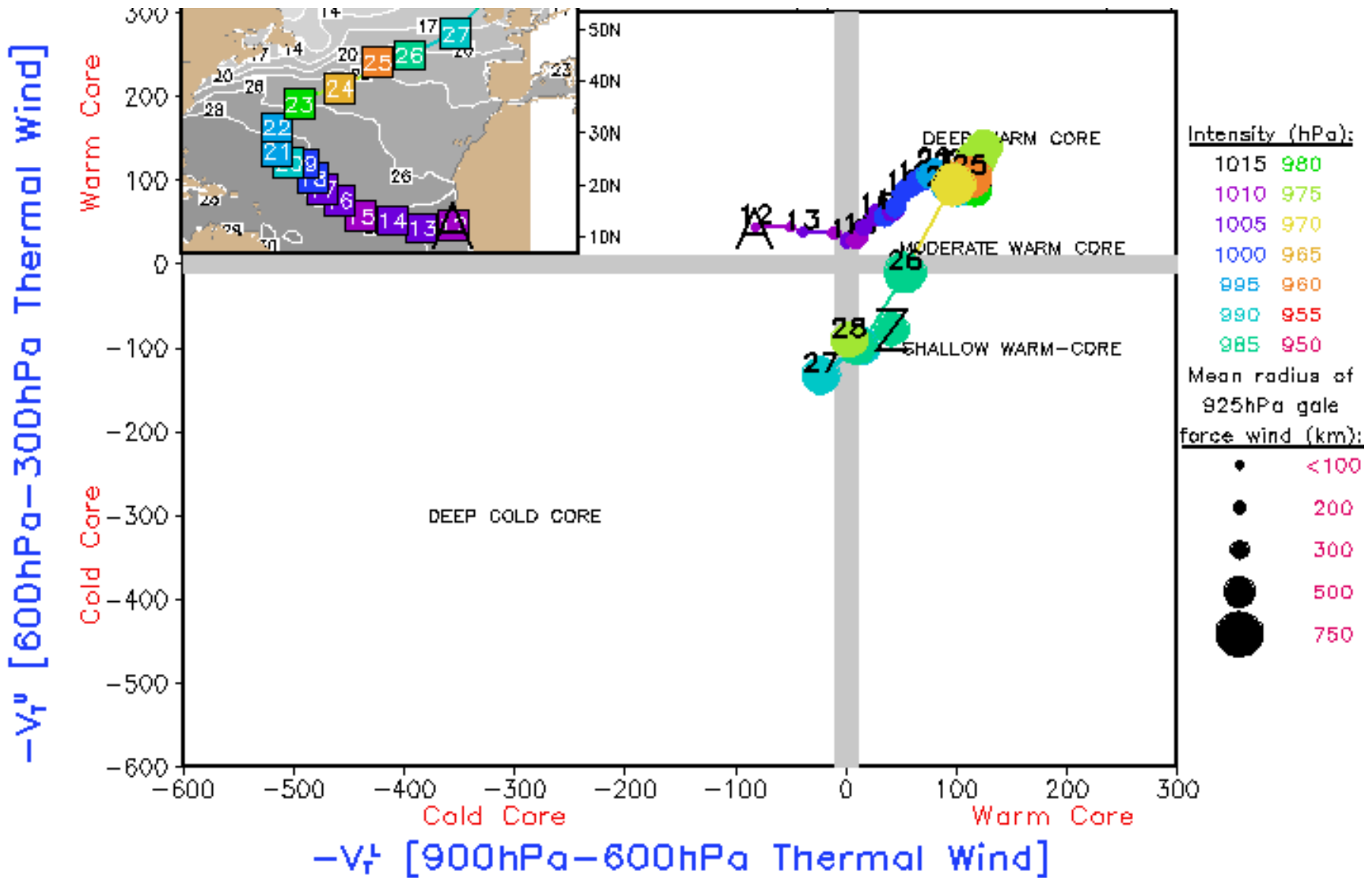
Warm Core

$-V_T$ [900-600hPa Thermal Wind]



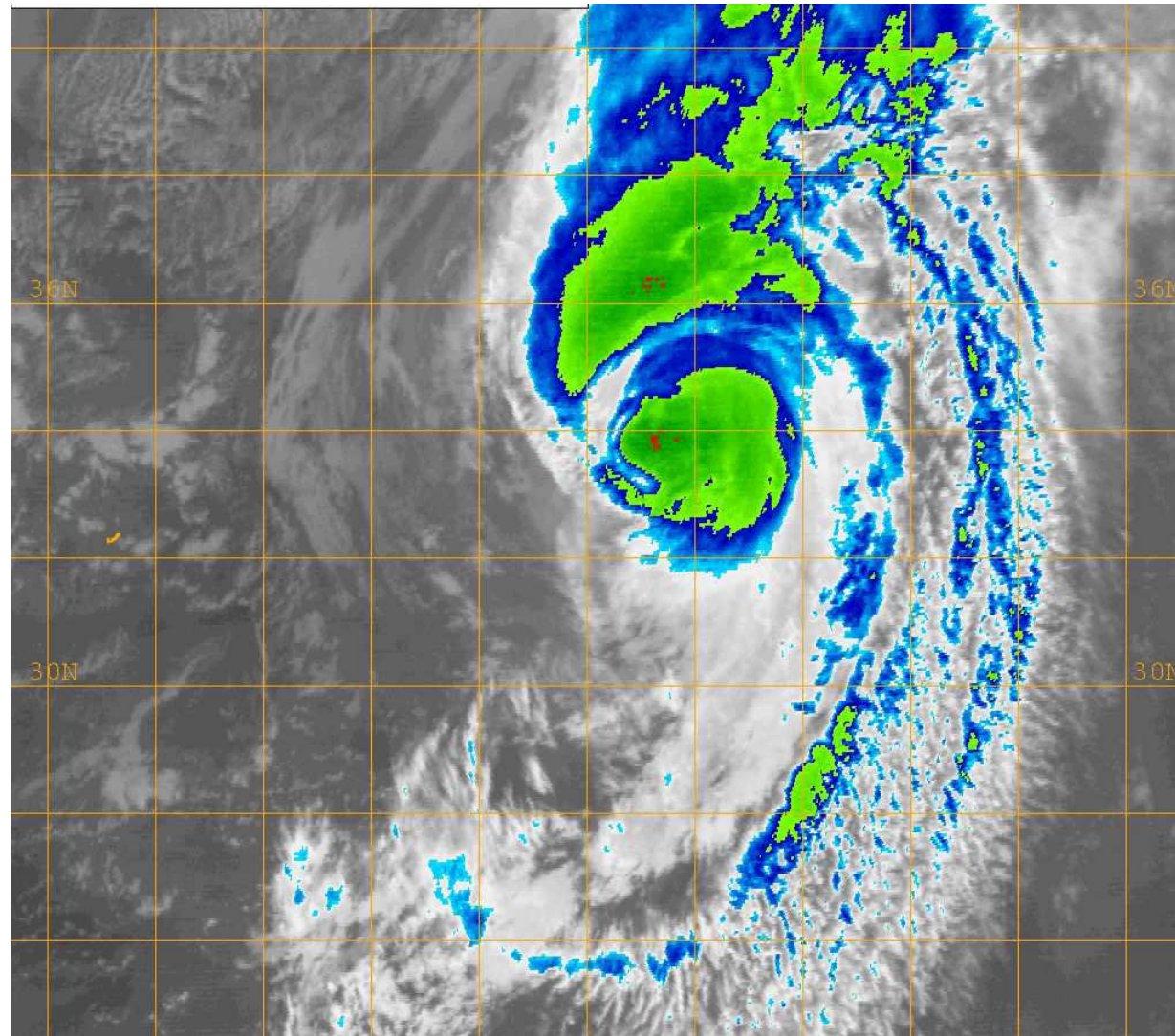
Phase Space Diagram 2

UKMET Analysis





12 UTC 22nd

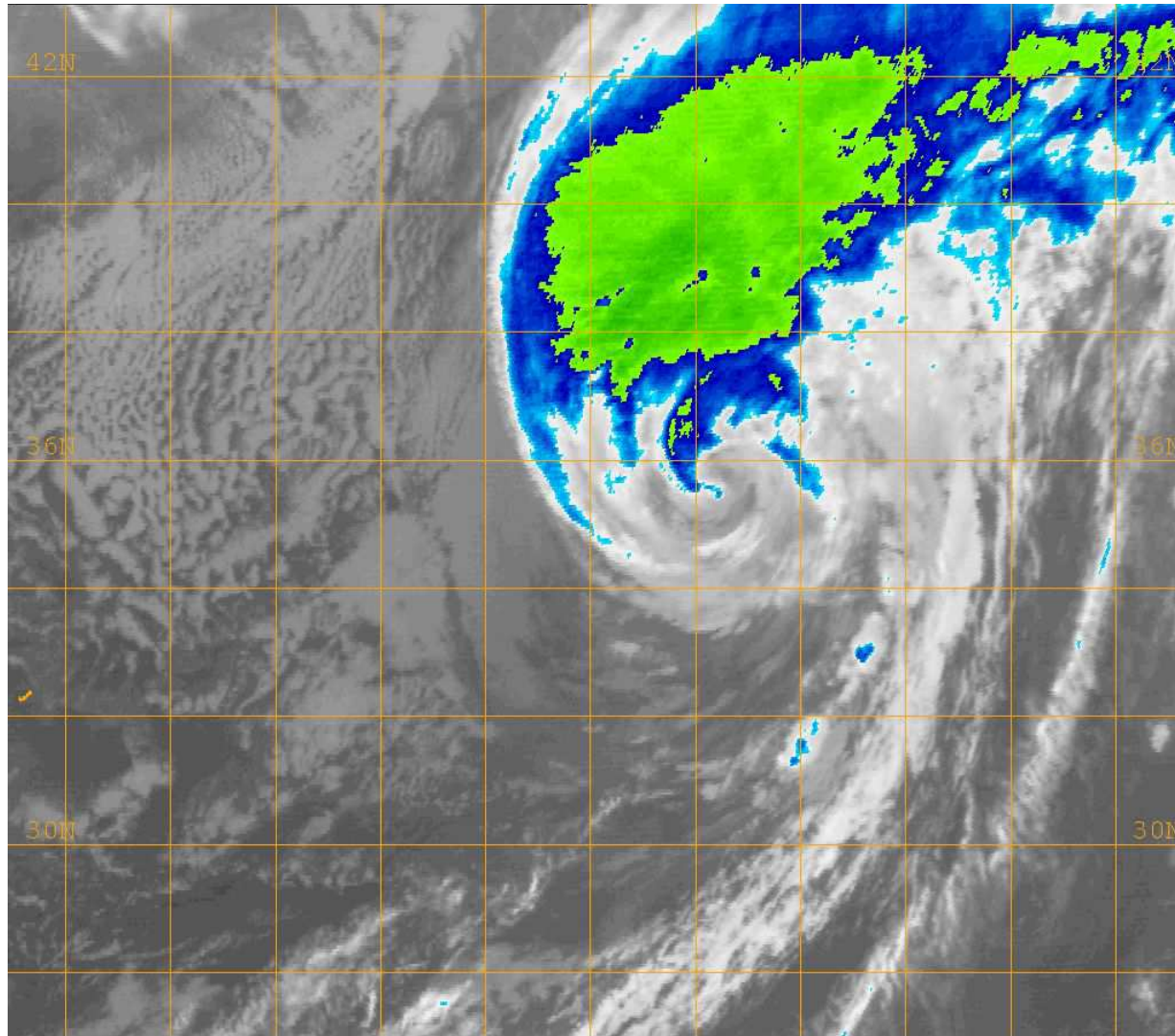


Naval Research Lab http://www.nrlmry.navy.mil/sat_products.html
<-- IR Temperature (Celsius) -->





00 UTC 23rd

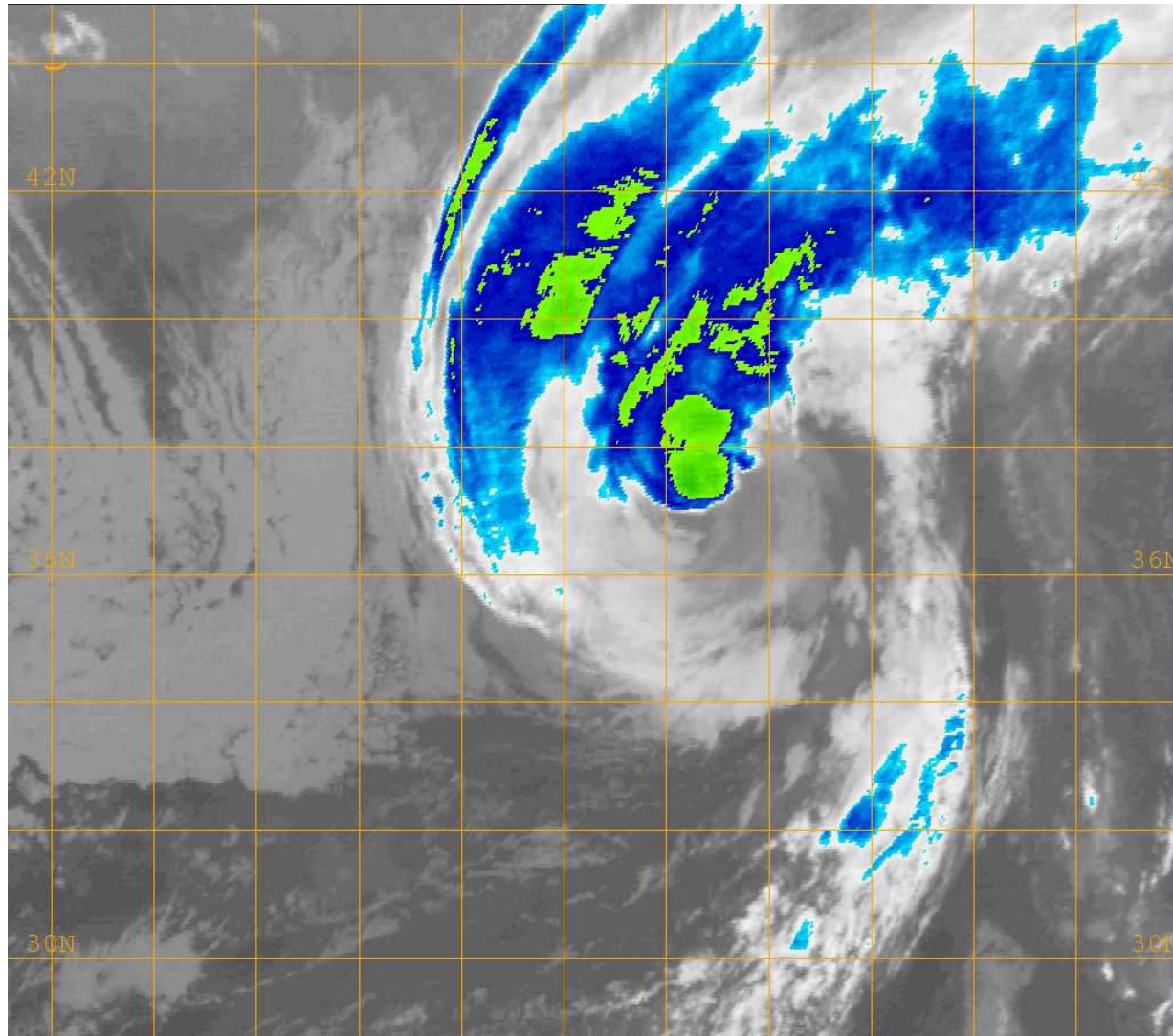


Naval Research Lab http://www.nrlmry.navy.mil/sat_products.html
<-- IR Temperature (Celsius) -->





12 UTC 23rd

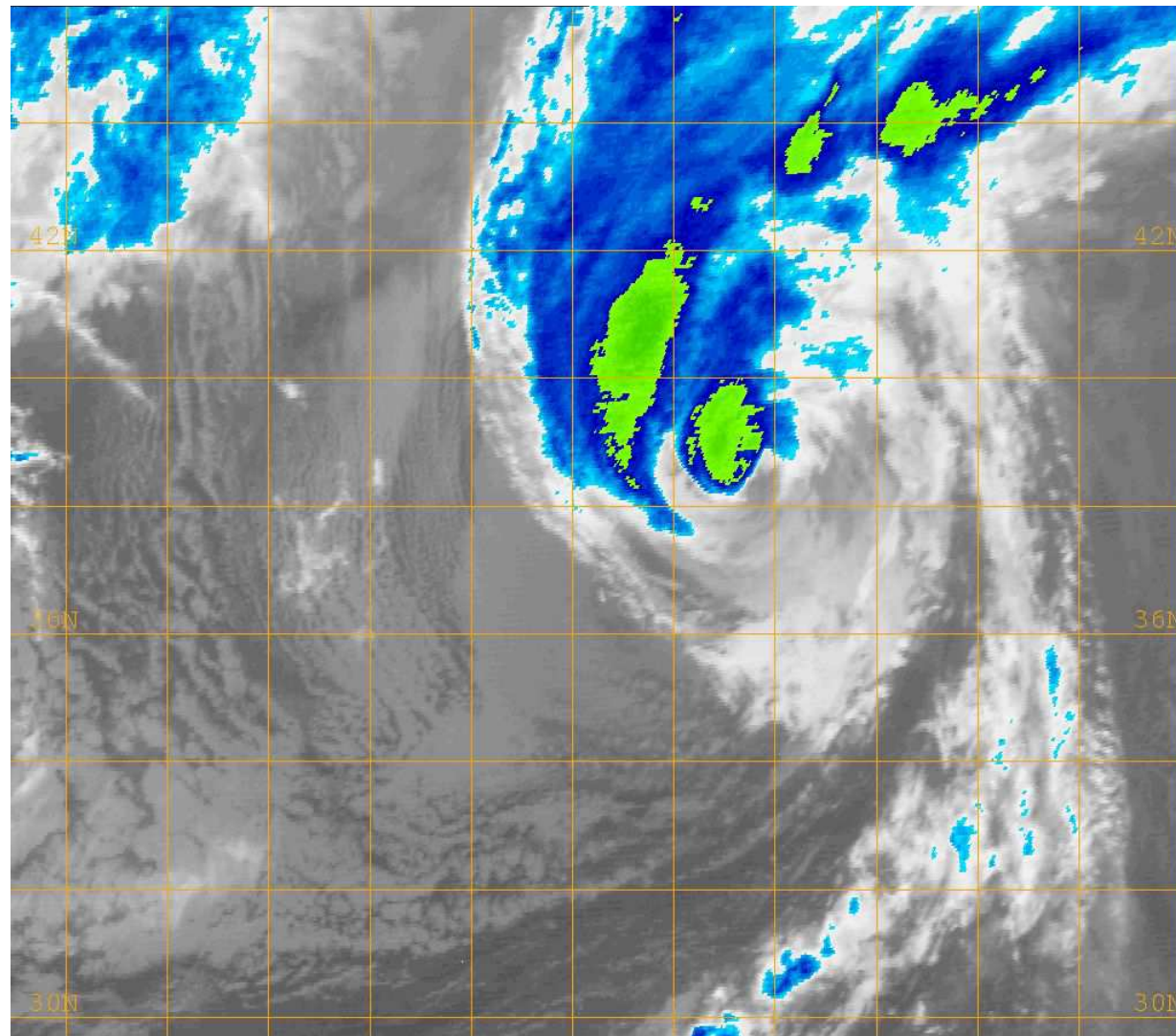


Naval Research Lab http://www.nrlmry.navy.mil/sat_products.html
<-- IR Temperature (Celsius) -->





00 UTC 24th

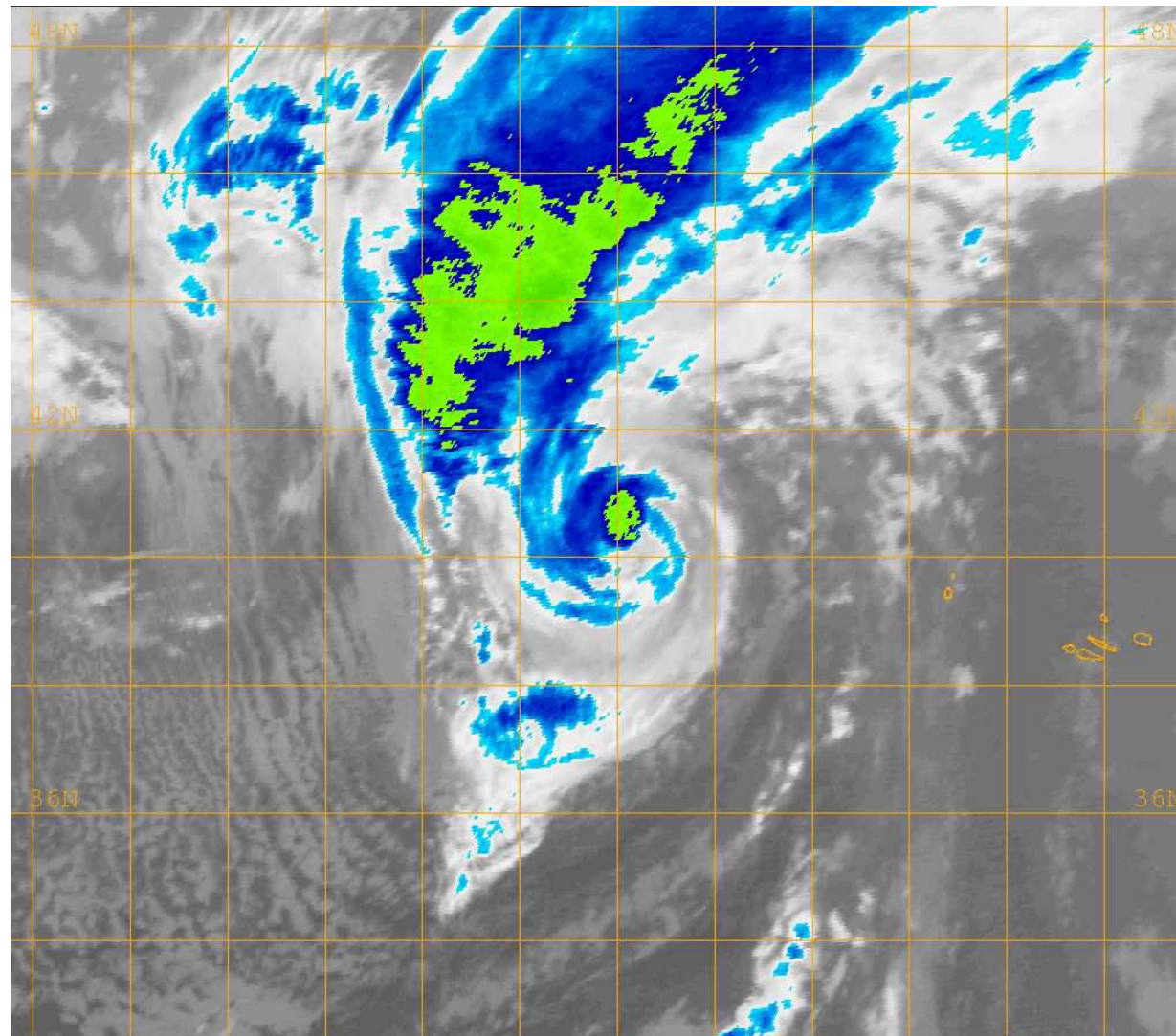


Naval Research Lab http://www.nrlmry.navy.mil/sat_products.html
<-- IR Temperature (Celsius) -->





12 UTC 24th

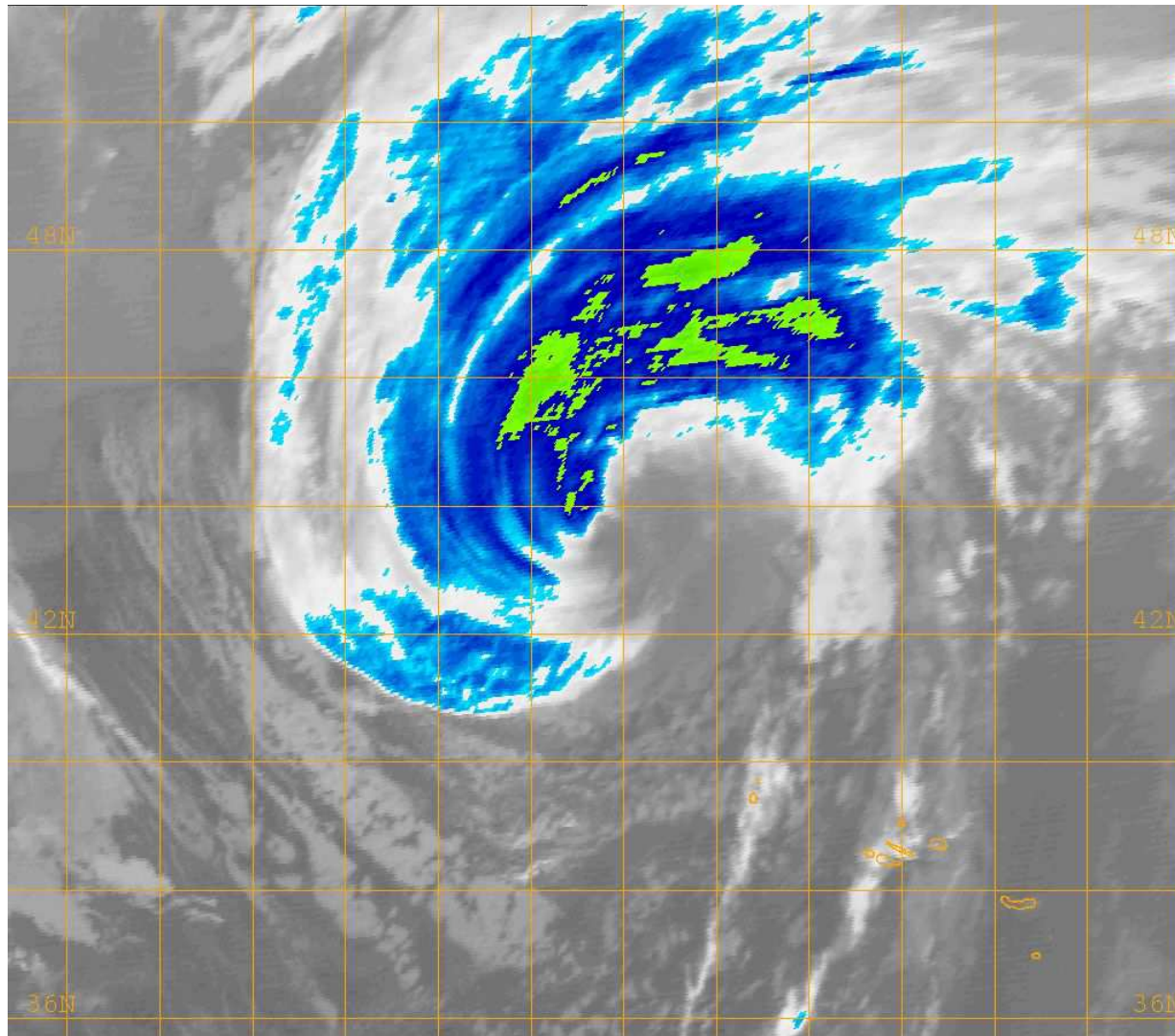


Naval Research Lab http://www.nrlmry.navy.mil/sat_products.html
<-- IR Temperature (Celsius) -->

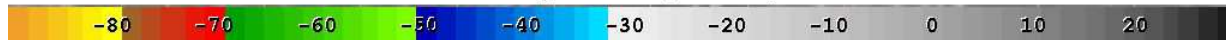




00 UTC 25th

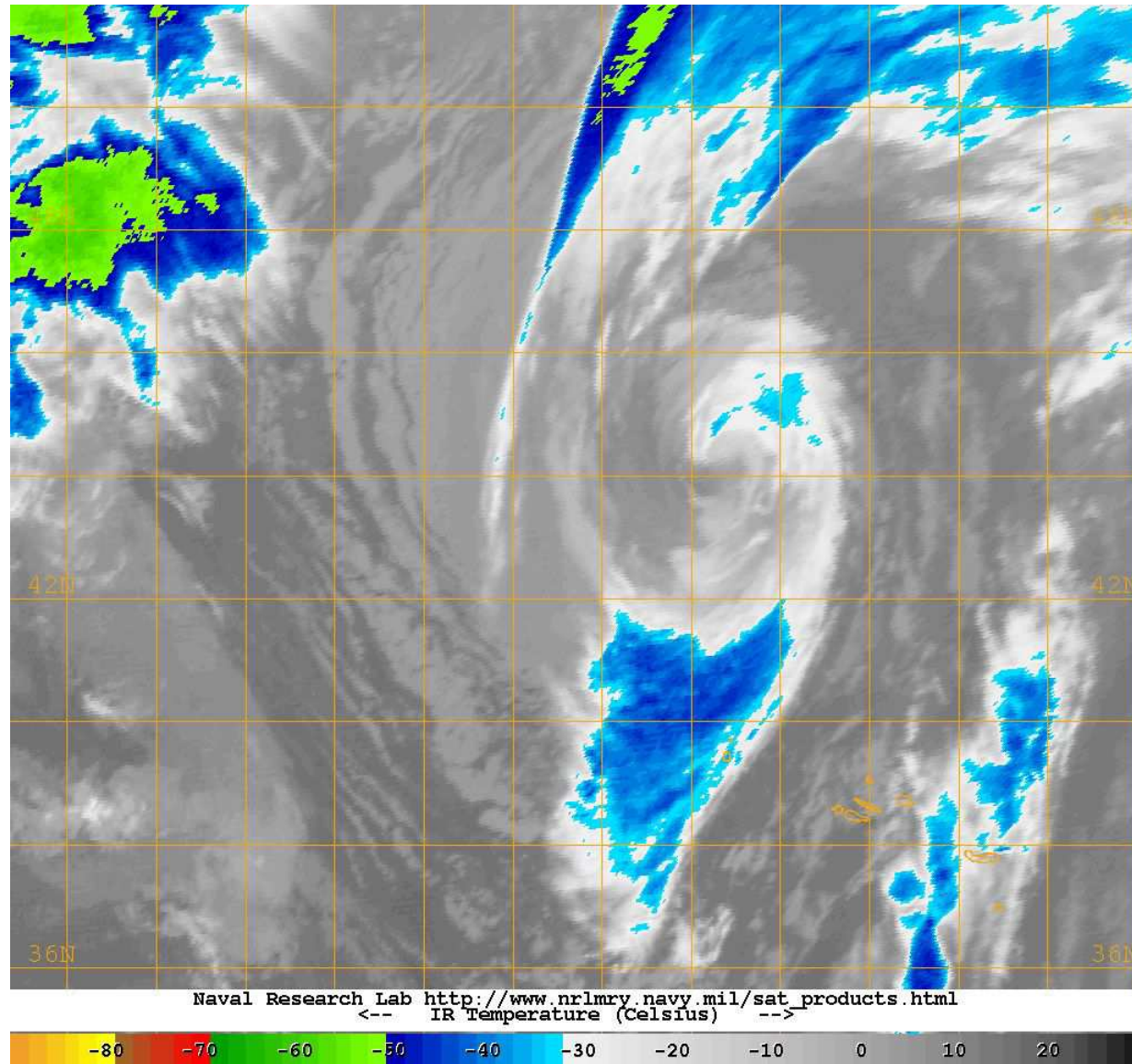


Naval Research Lab http://www.nrlmry.navy.mil/sat_products.html
<-- IR Temperature (Celsius) -->





11 UTC 25th





Satellite Imagery



- When does ET begin?
- When does ET end?