



**METEO FRANCE**  
Toujours un temps d'avance



**IA ORANA**

# Le monde

& Tahiti





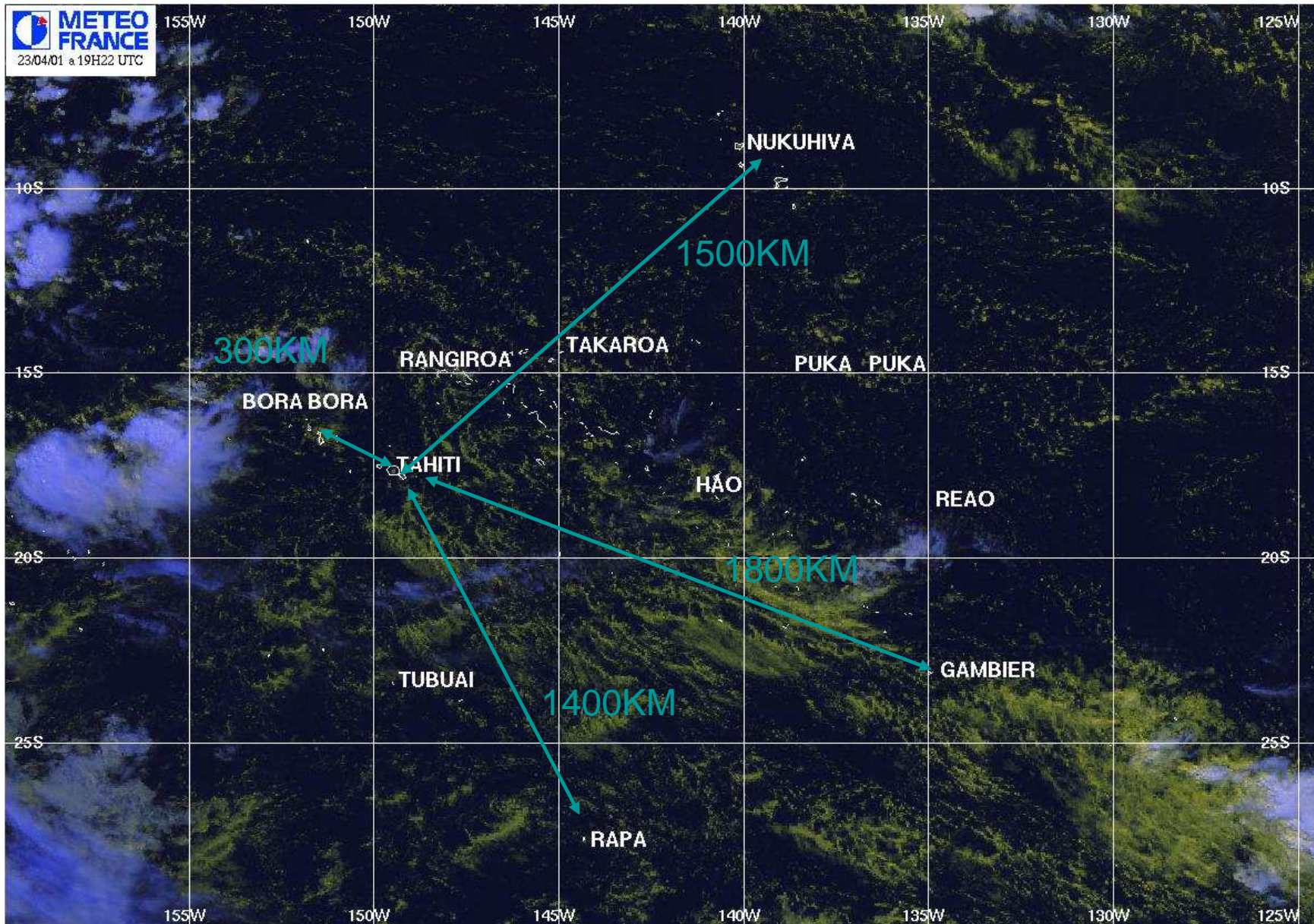
# FRENCH POLYNESIA AS BIG AS EUROPE



- 5 archipelagos, 118 islands
- 4 000 km<sup>2</sup> land
- 4 millions km<sup>2</sup> EEZ
- 5S-30S / 130W-155W
- 280 000 inhabitants
- Capital : Papeete



# TAHITI



## **Meteo-France in French Polynesia**

- Certificate ISO 9001
- 70 staff in Tahiti (Direction InterRégionale de Polynésie Française)
  - Forecasting Division
  - Communication Division
  - Maintenance Division
  - Treatment and Transmission Division
  - Climatology Division
  - Administrative Division
- 9 staff in Tahiti-Faa'a observation station
- 12 staff in island stations (Hiva Oa, Mangareva, Rapa)



## Forecasting Division

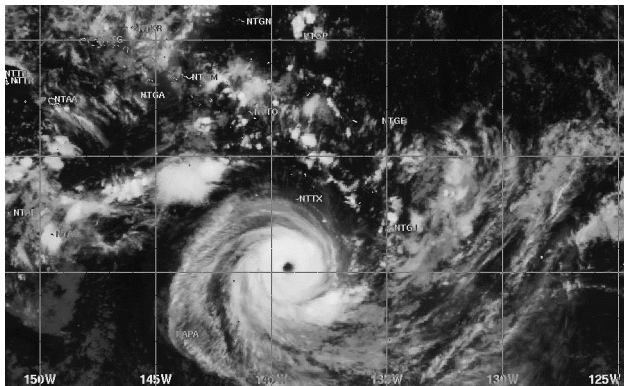
- 10 aeronautical/marine/media forecasters (PPAM/PPME)
- 7 safety forecasters (PS)
- 2 managers
- Night : 1 PS, 1 PPAM/PPME
- Day : 1 PS, 2 PPAM/PPME



**METEO FRANCE**  
Toujours un temps d'avance

# Meteo France duties in French Polynesia

- Dangerous meteorological phenomenon watch
- Marine security
- Aeronautical security
- Maintenance of the observation system necessary to accomplish these duties





## 2 Seasons

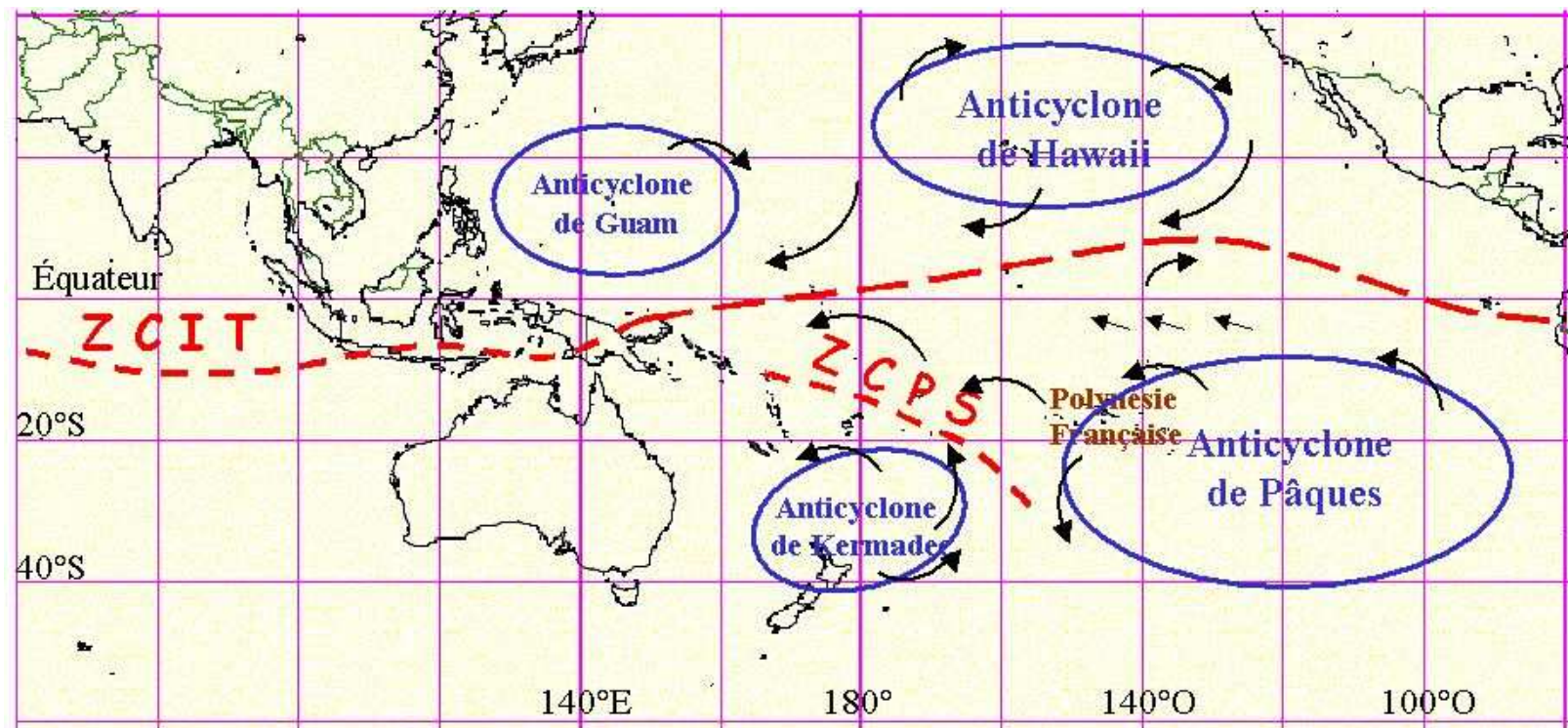
- Warm/Rain Season or Austral summer, from november to april.
- Cold/Dry season or Austral winter, from may to october



# CLIMATE - ITCZ and SPCZ

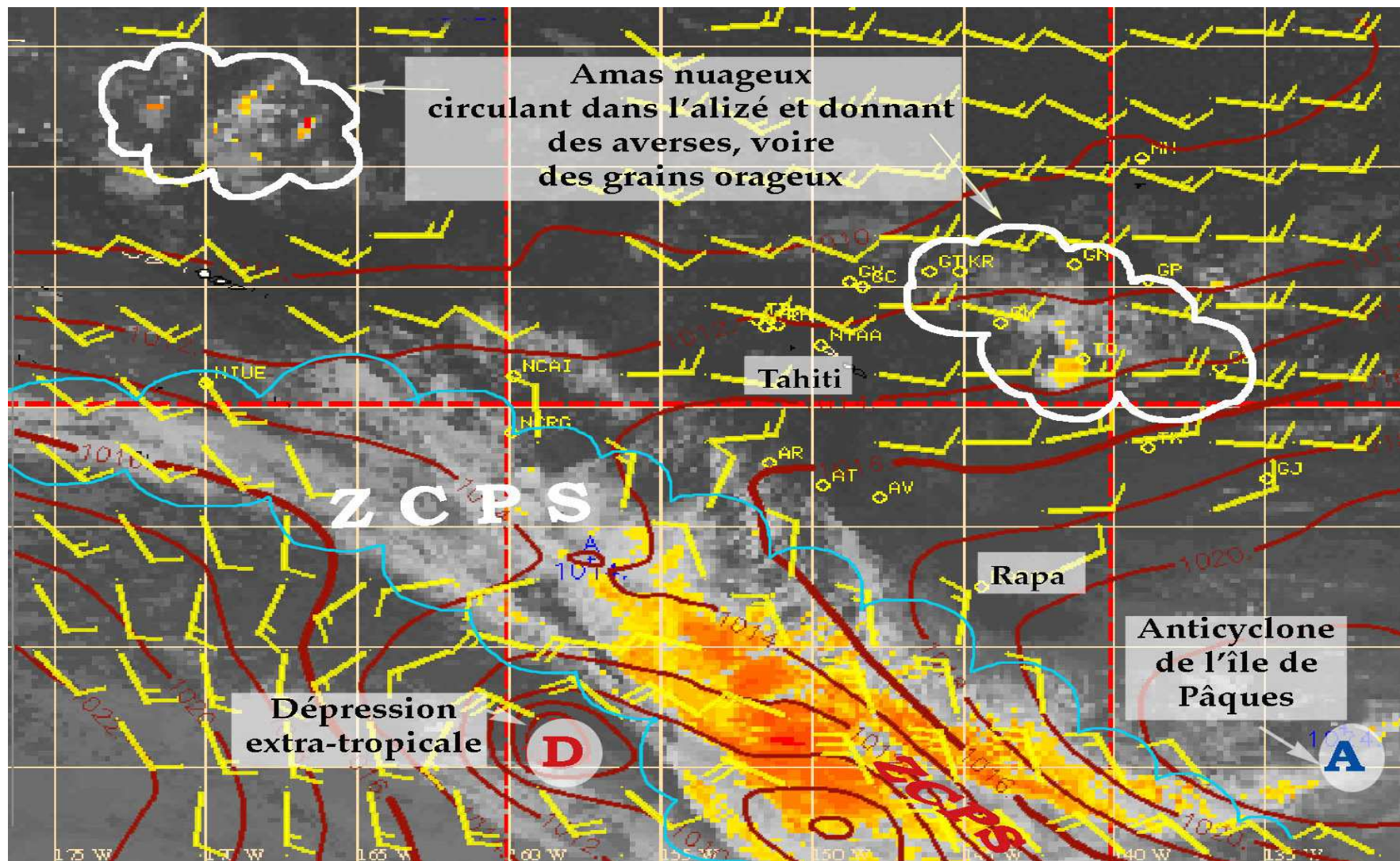
Surface circulation is commanded by 2 subtropical high cells (Kermadec and Easter Island).

2 Convergence Areas, ITCZ and SPCZ, are the major sources of bad weather.



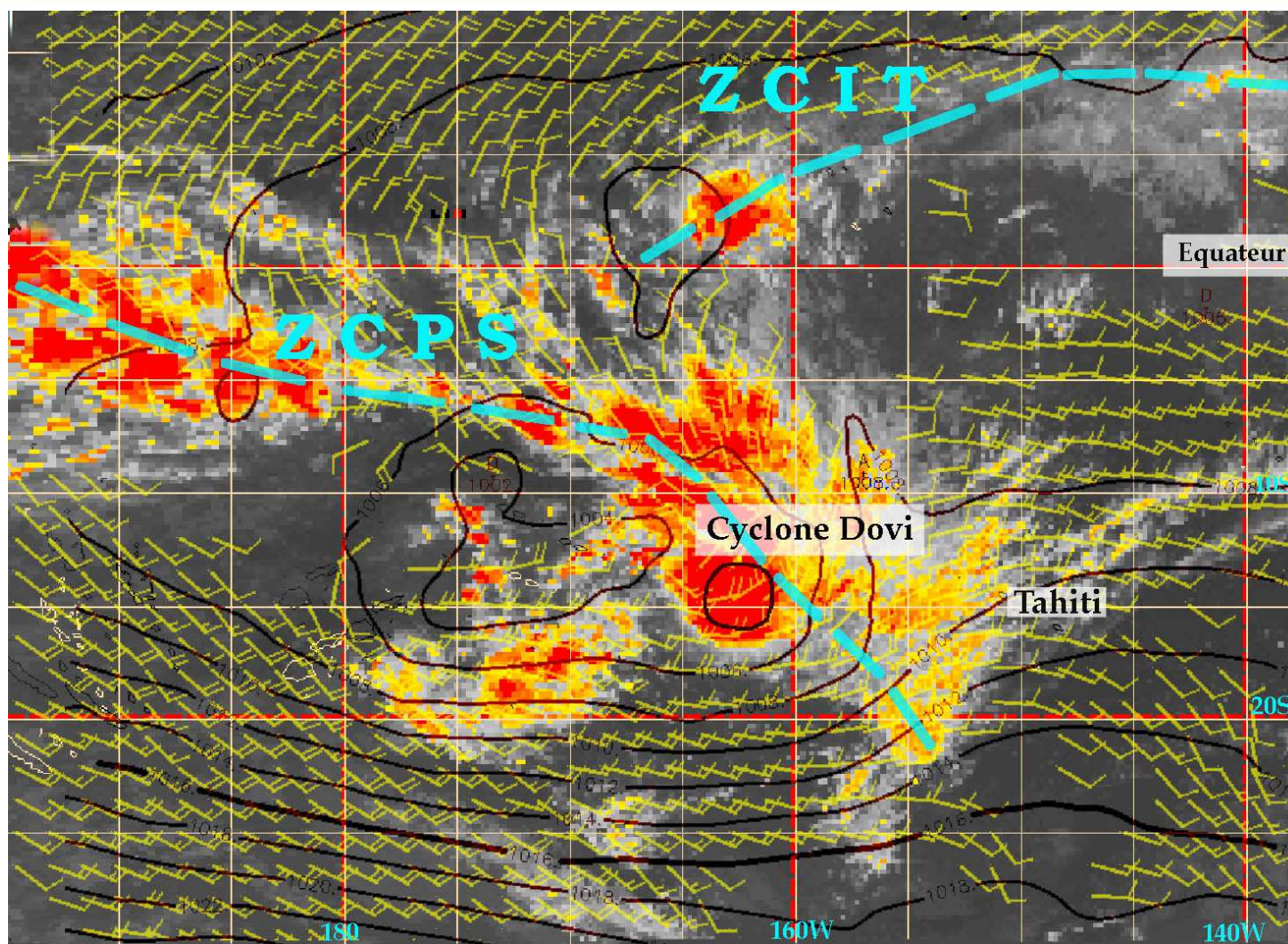


# Exemple



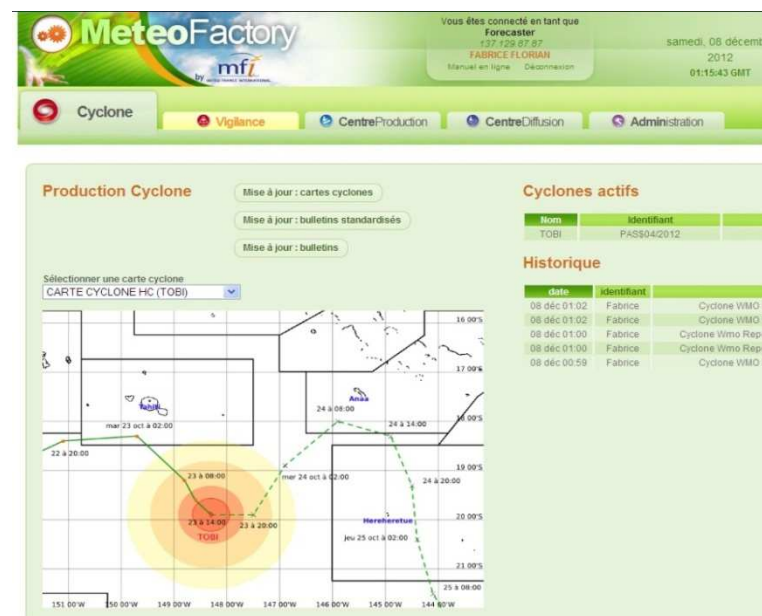
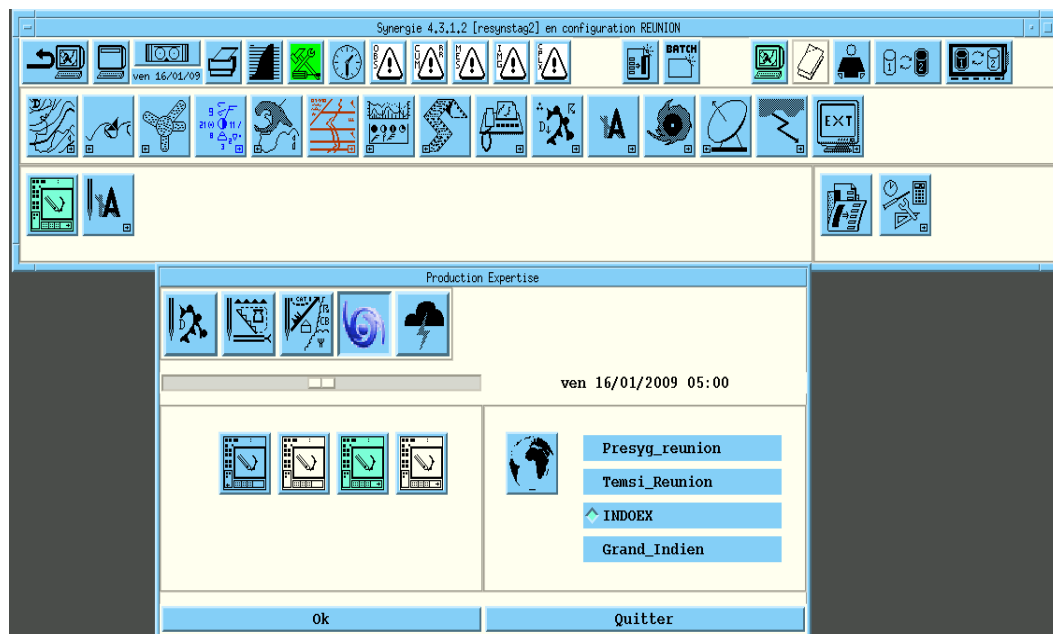


# Tropical Disturbance



# Softwares and data used

- Synergie (soon to be replaced)
  - Numerical models (ARPEGE, Arome, IFS, GFS)
  - Satellite Imagery
  - Observations (stations, ships, etc.)
- Meteofactory







# Products

Anasyg  
Presyng 36 and 60

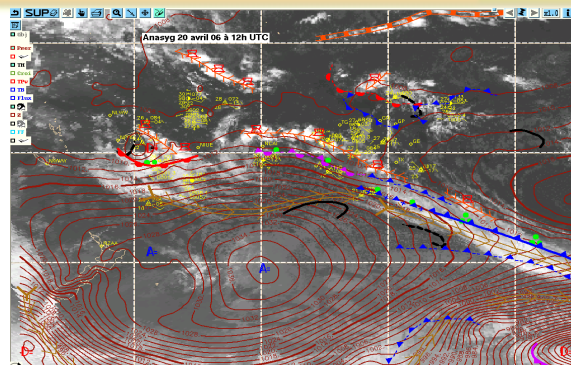
Daily weather  
bulletins

Vigilance  
Tropical cyclone  
advisories

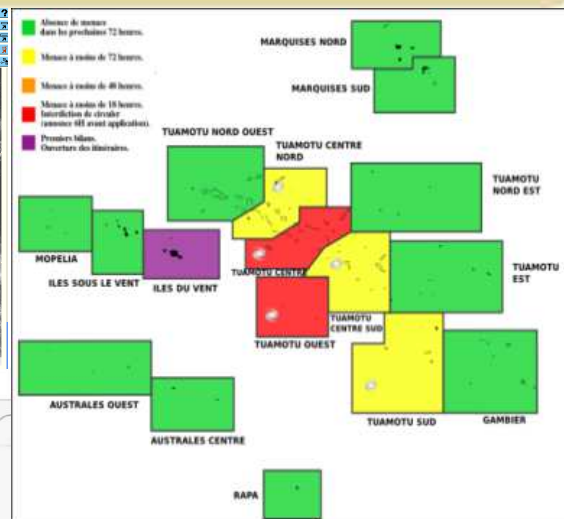
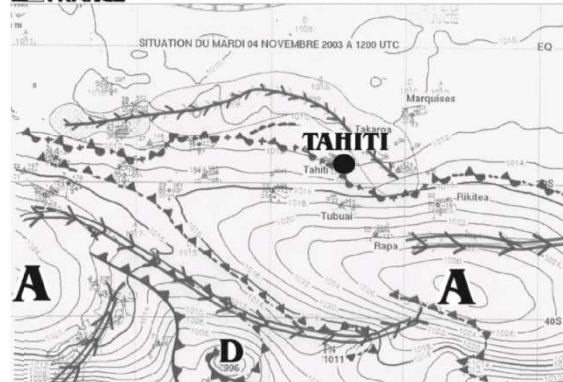
Temsi  
Taf  
Sigmet

BMS

Etc.



METEO FRANCE Situation du mardi 04 novembre 2003 à 1200 UTC



**METEO FRANCE**  
Toujours un temps d'avance



**MAURU'URU  
MERCI VINAKA**

**meteo.pf**