



# Niue Meteorological Service

Hingano Laufoli-Hipa  
Ministry Of Natural Resources

# Contents

- ◊ Introduction
- ◊ Operation
- ◊ Country
- ◊ Community
- ◊ Agencies
- ◊ Warning System
- ◊ Challenges/Pressure
- ◊ Recommendations





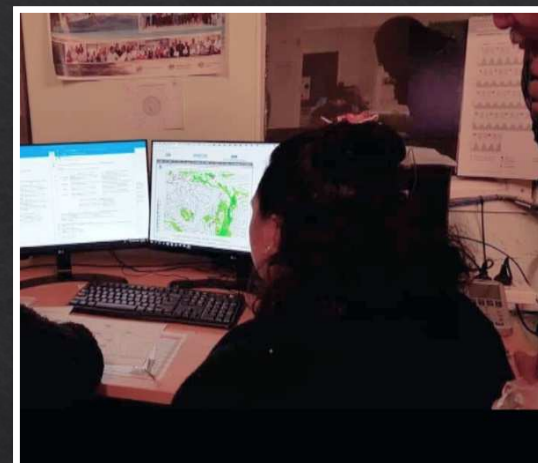
# Introduction



- ❖ Located 19.0 S and 169 W
- ❖ Under the Ministry of Natural Resources.
- ❖ Met. Service located at Hanan Airport & Niue reference meteorological station.
- ❖ Our Vision: “A prime driver of weather and climate services.”
- ❖ Our Mission: “To provide credible and timely weather and climate services for all stakeholders.”

# Operation

- ❖ Niue Met Service is not 24/7.
- ❖ Tropical Cyclone event: 24/7.
- ❖ Air NZ flights, Monday 12am to 4pm.
- ❖ Air NZ flights, Friday 12am to 4pm.
- ❖ Tuesday, Wednesday and Thursday are normal working hours 8am-4pm.
- ❖ Saturday, Sunday and public holidays are 8:30am to 10:00am.





# Tropical cyclones impact to Niue

- ❖ It reduces Niue's economic development.
- ❖ Affect the people's lifestyles.
- ❖ Affects environment, marine and coastal ecosystems
- ❖ Damage to Niue's government infrastructures
  - ❖ Public road
  - ❖ Govt building
  - ❖ Hospital
  - ❖ Schools
  - ❖ Power
  - ❖ Water



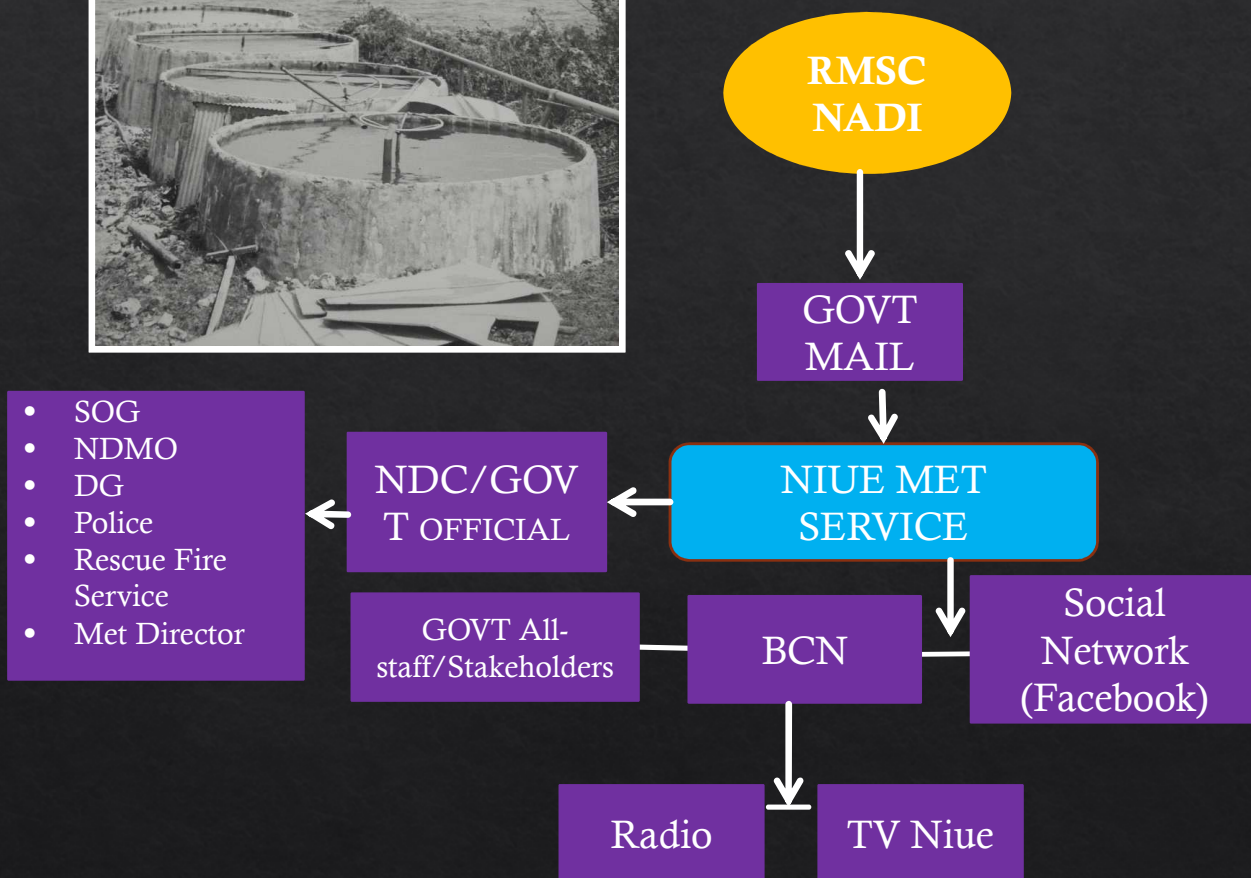
# Tropical cyclones impact to our Communities



- ❖ Block roads and access to villages or emergency agencies.
- ❖ Damage to homes e.g. power, water and shelter.
- ❖ Communication break down.
- ❖ Sea spray on people's Belongings e.g. boats, cars, houses etc....
- ❖ Damage to food crops due to strong winds and heavy rain.



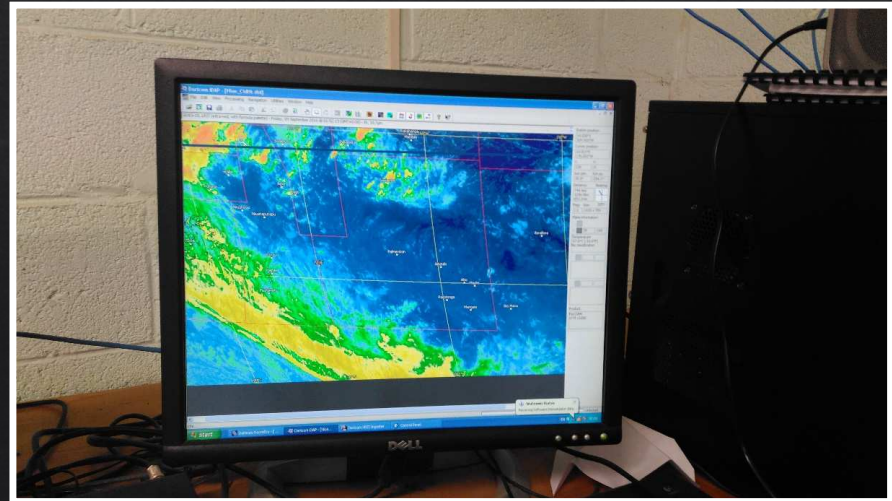
# Tropical cyclones impact to our Agencies



- ❖ RMSC in Nadi prepares Niue TC advisory's.
- ❖ Niue Met simplify and translates advisories.
- ❖ Advice the Niue Disaster Council.
- ❖ Prepare sat images and TC forecasting tracking map.
- ❖ Disseminate amend advisory and maps to all stakeholders.

# Warning Systems

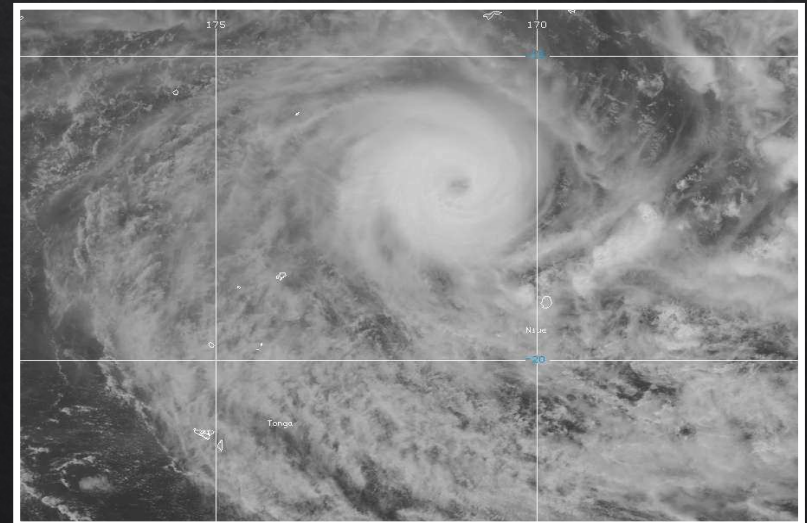
- ◆ RSMC Nadi is responsible for issuing and Cancelling warnings for Niue. Strong Wind, Damaging Swell and Heavy Rain.
- ◆ RSMC Nadi also responsible for issuing TC reports (Disturbance, Advisories, SWB).
- ◆ Niue receives TC and non-TC reports through Govt email & EMWIN.
- ◆ Event of TC Met. Service is to notify respective Government officials and NDMO (Niue Disaster Management Officer)
- ◆ Niue Met will become a 24/7 Operation until cyclone moves well away from Niue.

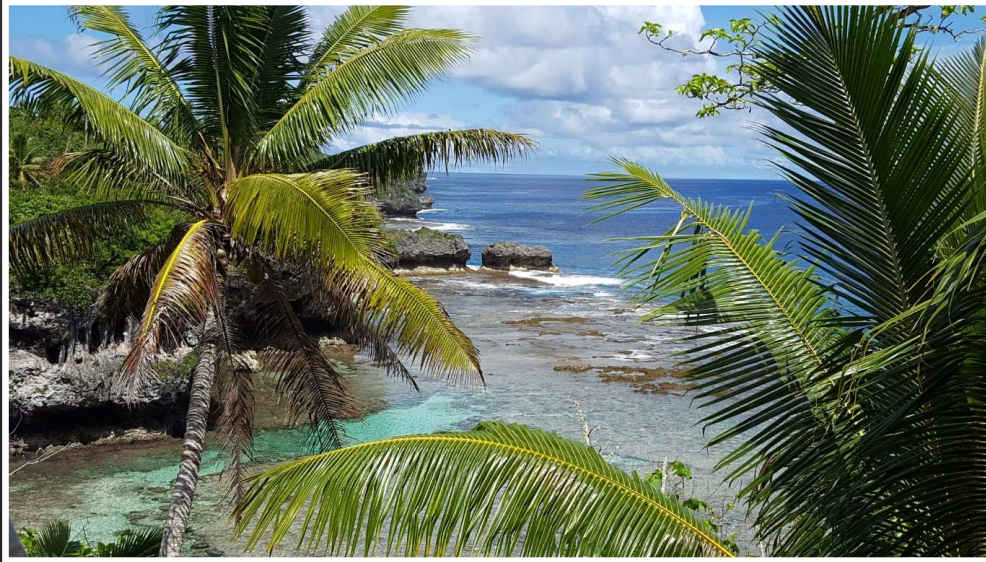




# Challenges

- ◈ Unplanned power outages.
- ◈ People look to other sources for weather information.
- ◈ Translations takes time.
- ◈ One source of internet via government network.
- ◈ Providing information on social media takes time as priority is on core operation.
- ◈ Not a 24/7 operation.





# Recommendations

- Further training on public media to promote our products.
- Promote public awareness on Tropical Cyclone.
- Preparation for the TC 2019/2020.
- Pre-cyclone briefing for key stakeholders.
- Further training on Tropical Cyclone forecasting.
- Safety gears for staff during weather observation.



[Metoffice.staff@mail.gov.nu](mailto:Metoffice.staff@mail.gov.nu) / [Hingano.laufoli@mail.gov.nu](mailto:Hingano.laufoli@mail.gov.nu)

# Fakaue Lahi/Thank you

