

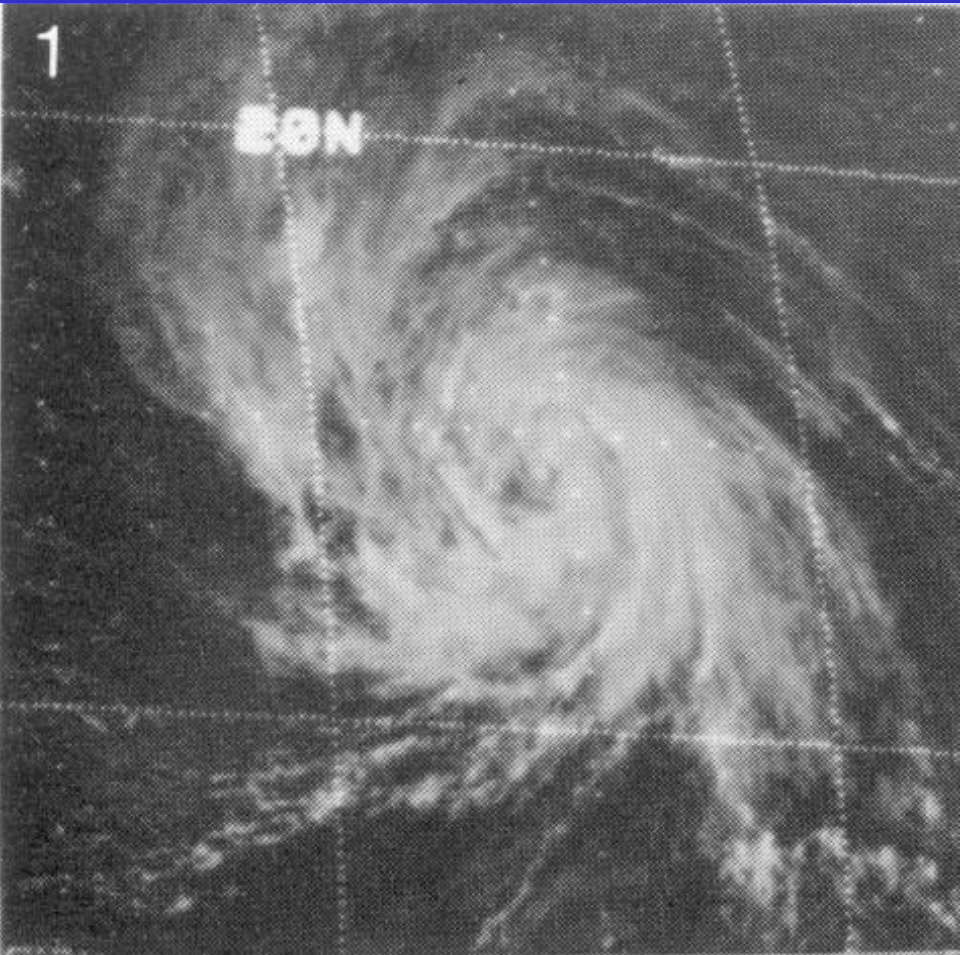
Dvorak Pattern Recognition Exercises

Objective: To determine cloud patterns and cloud pattern measurements of the following examples of tropical weather systems.

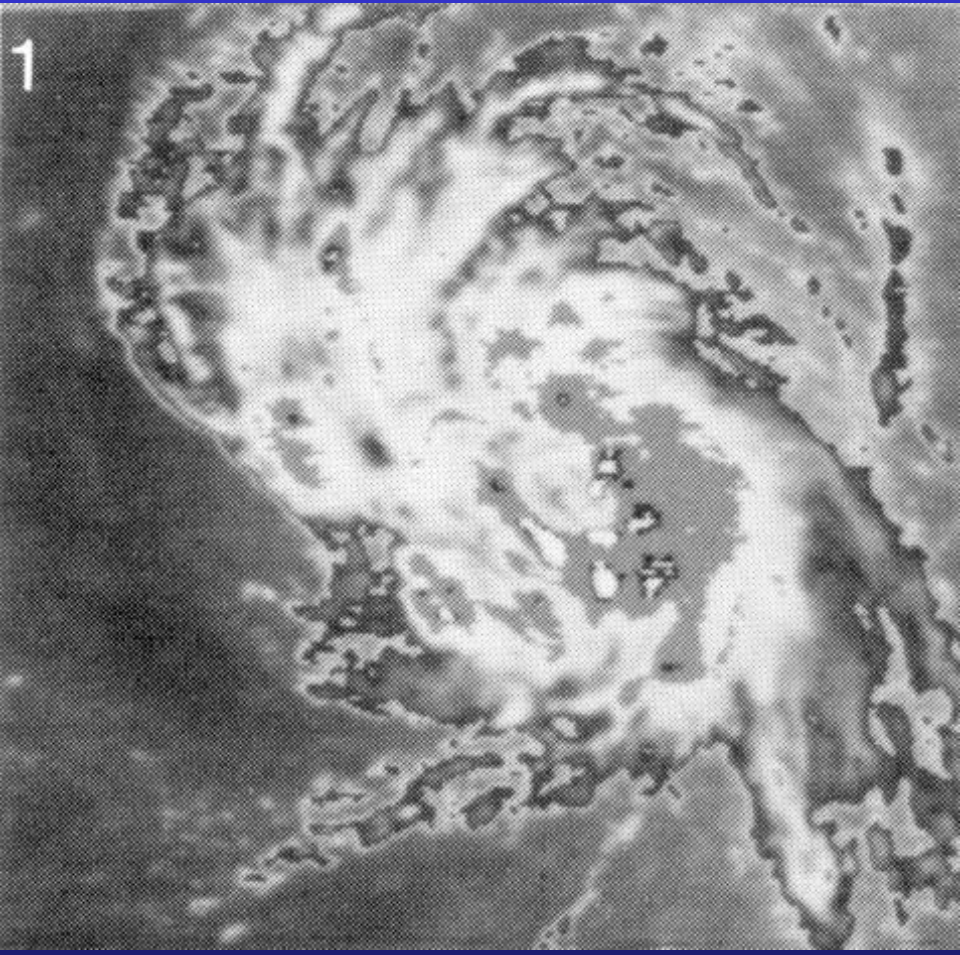
Clicker Instructions

- A) Curved Band Cloud Pattern
- B) Shear Cloud Pattern
- C) CDO Embedded Center Cloud Pattern
- D) Eye Cloud Pattern
- E) Central Cold Cover Pattern

Pattern Recognition Exercise 1



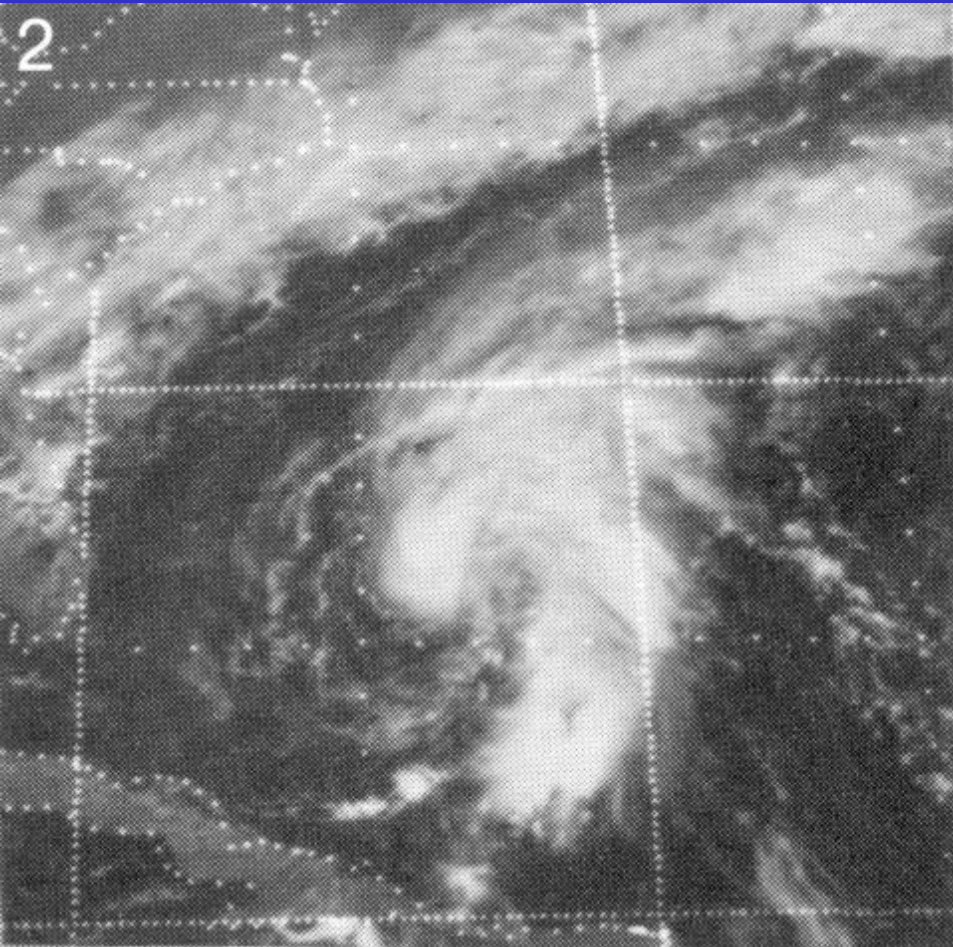
Visible



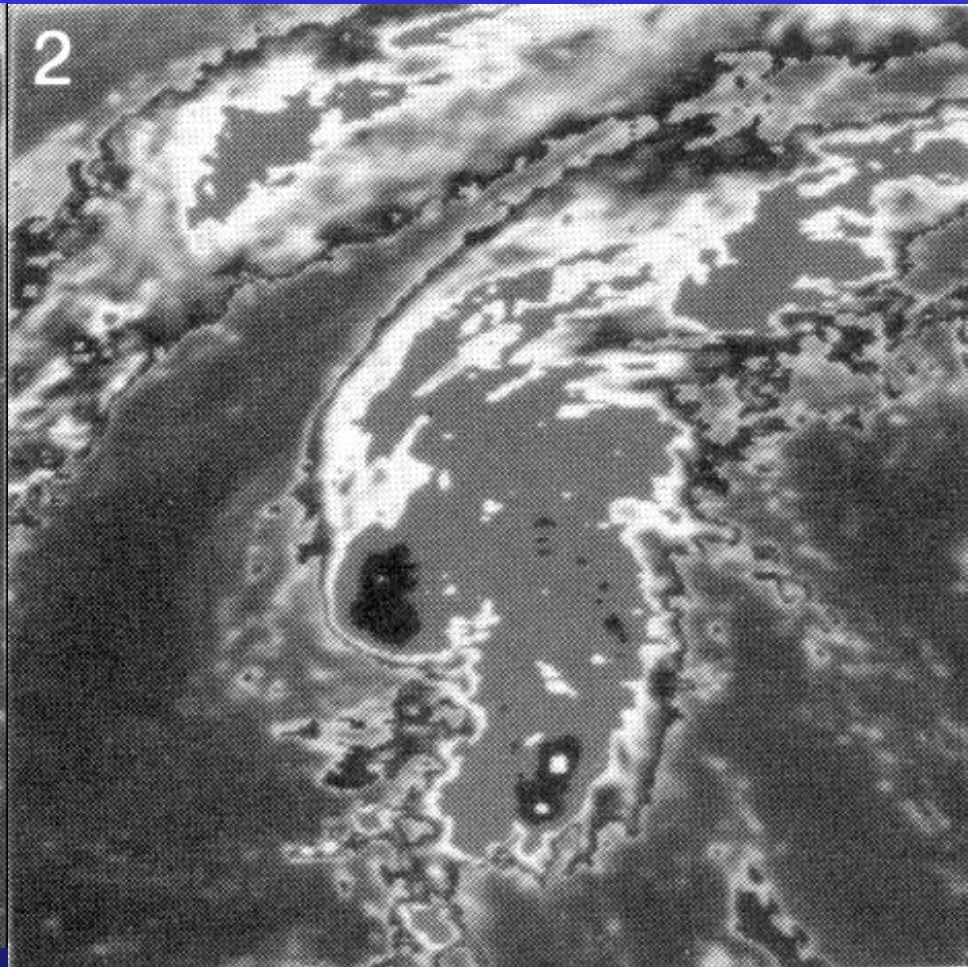
Infrared

Curved band pattern DT=3.0- Recon found 1002.3 mb for T2.8

Pattern Recognition Exercise 2



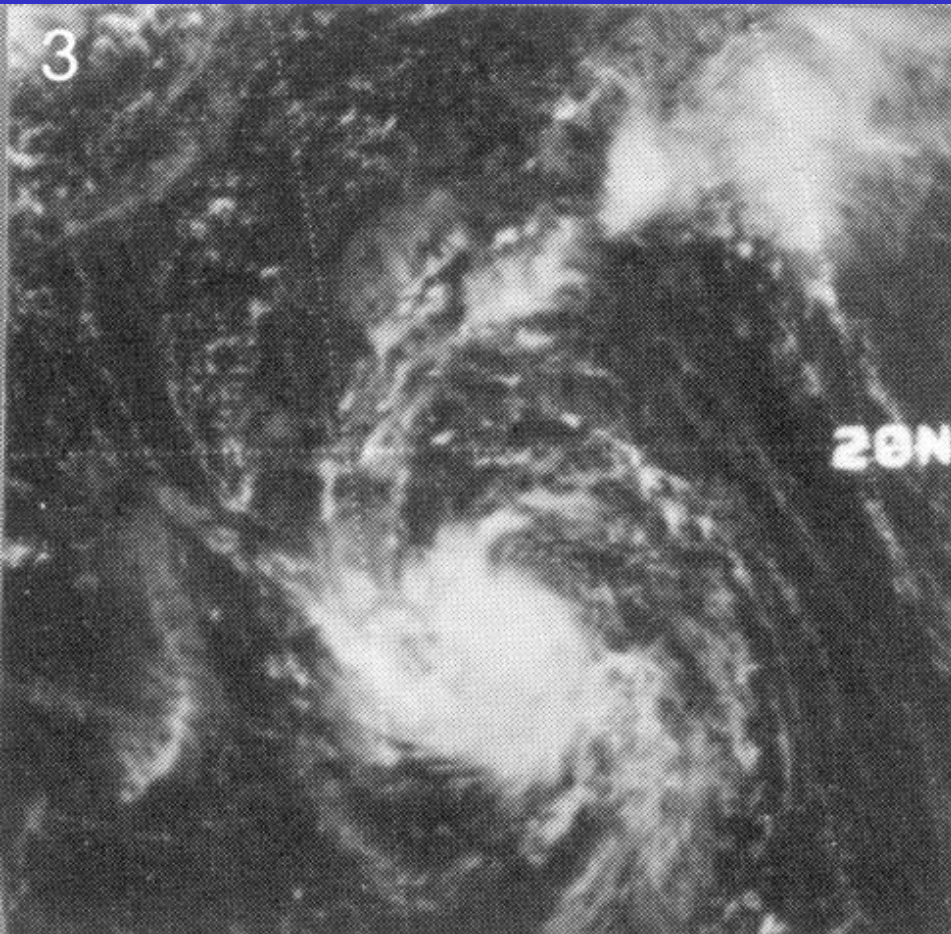
Visible



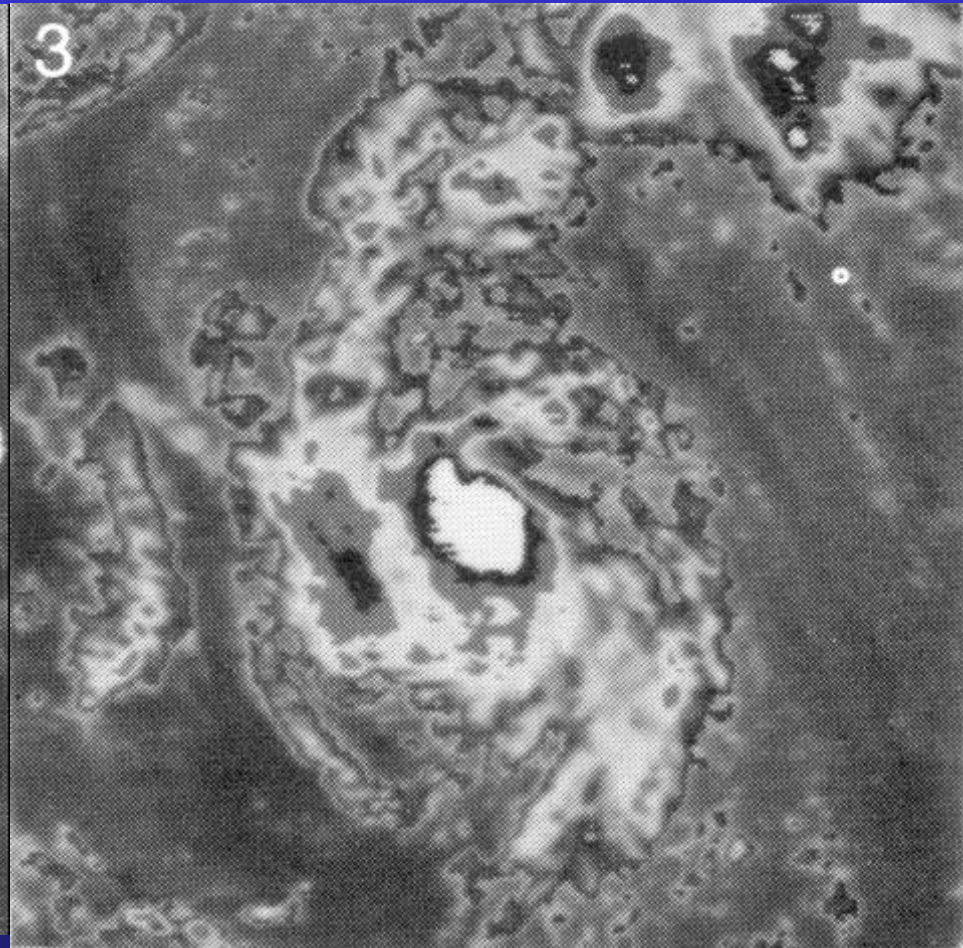
Infrared

1.5 deg CDO DT=3.5 Recon found 995 mb for T3.4

Pattern Recognition Exercise 3



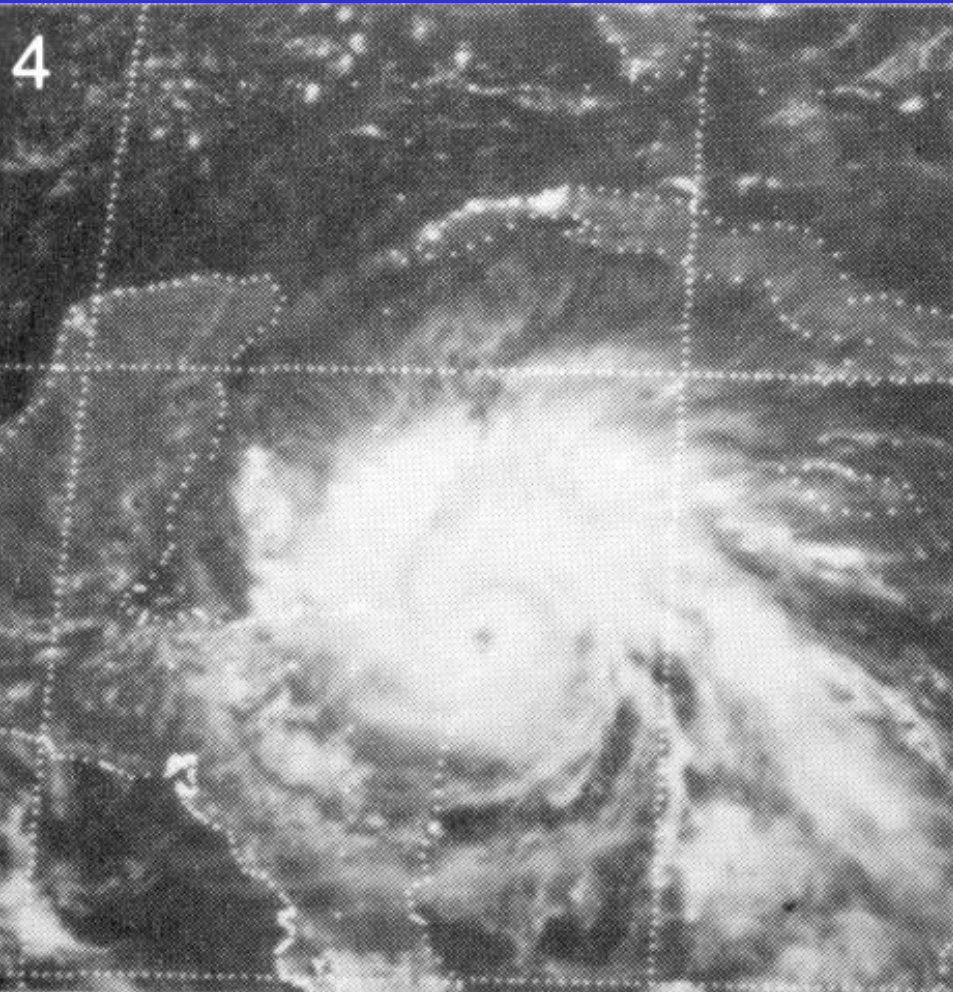
Visible



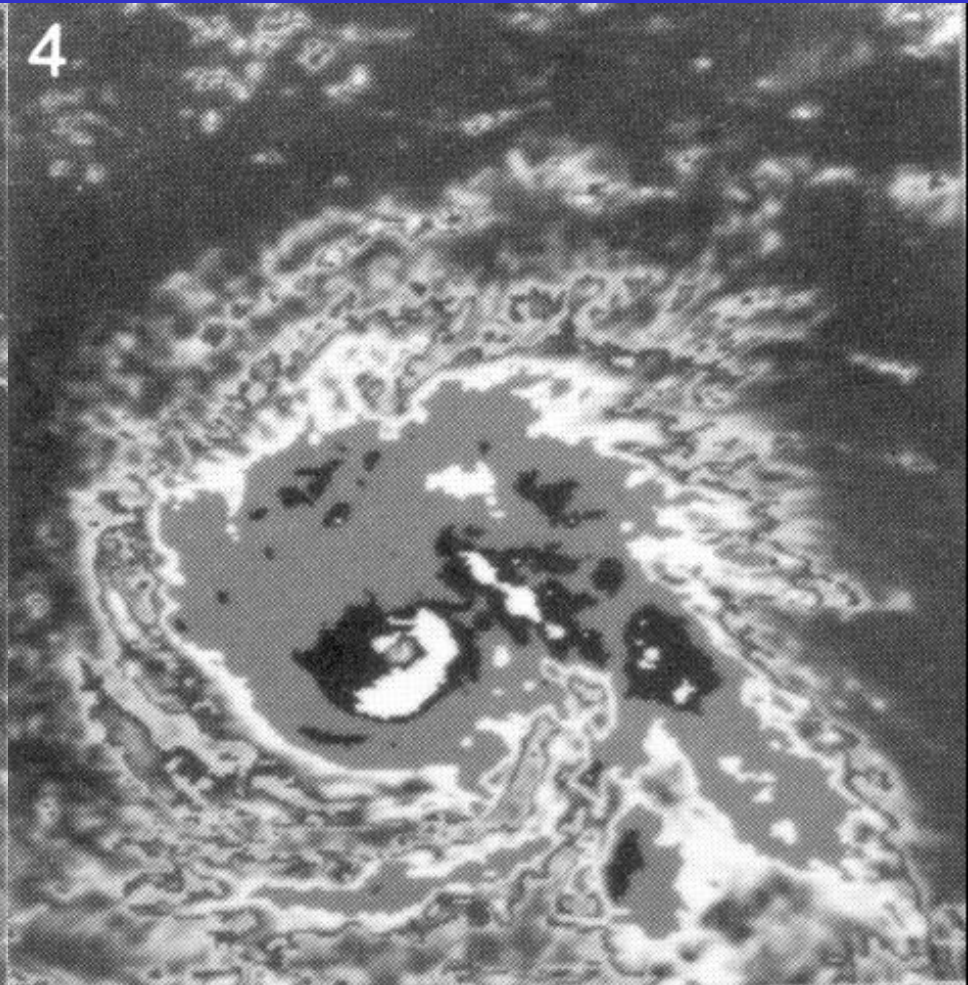
Infrared

Curved band pattern DT=2.5+ Recon found 1003.4 mb for T2.7

Pattern Recognition Exercise 4



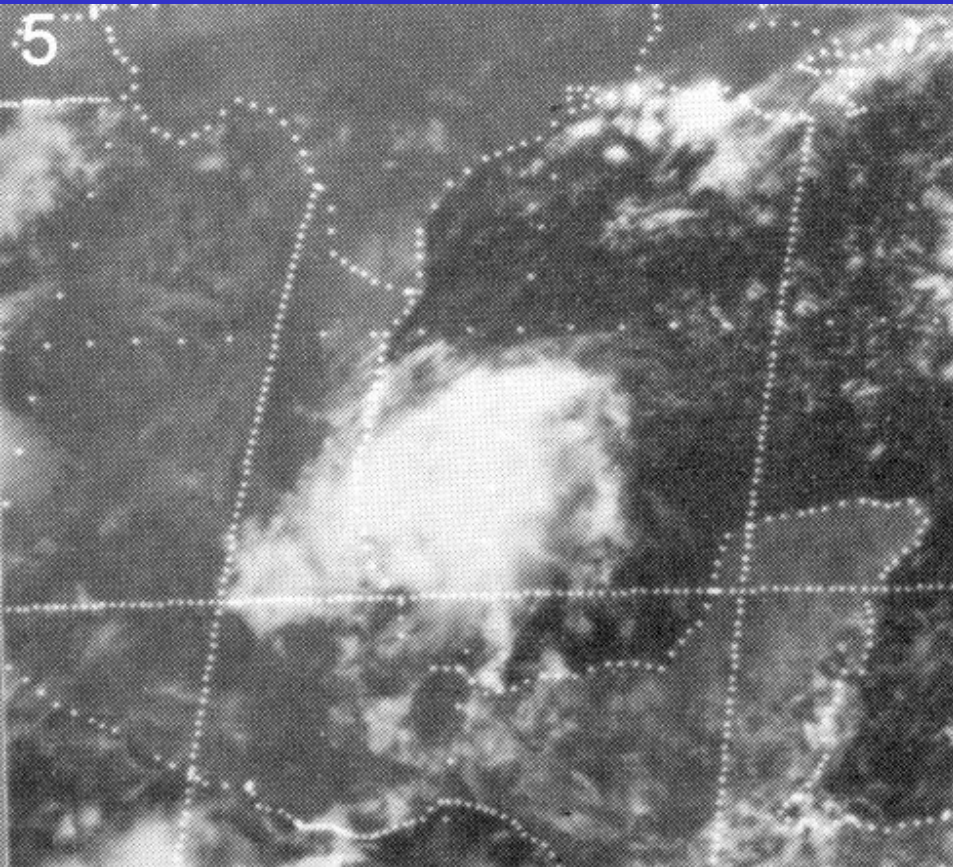
Visible



Infrared

VIS Eye Pattern DT=5.0 Recon found 966 mb for T5.2

Pattern Recognition Exercise 5



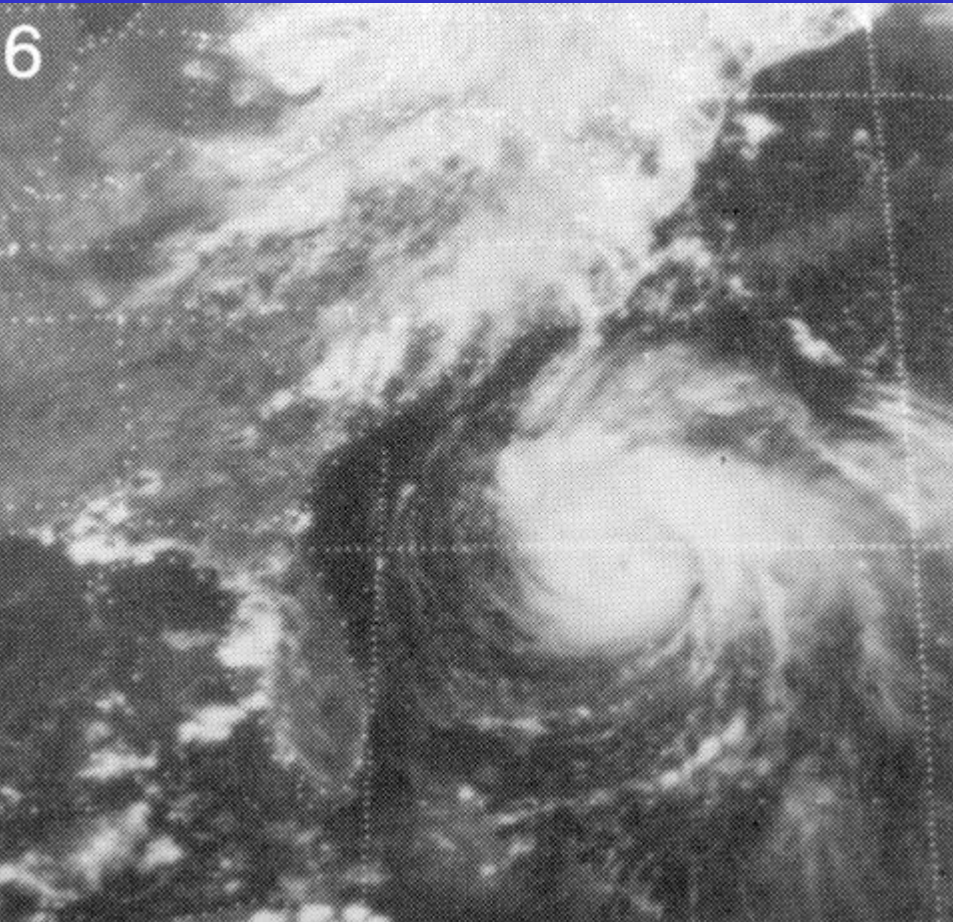
Visible



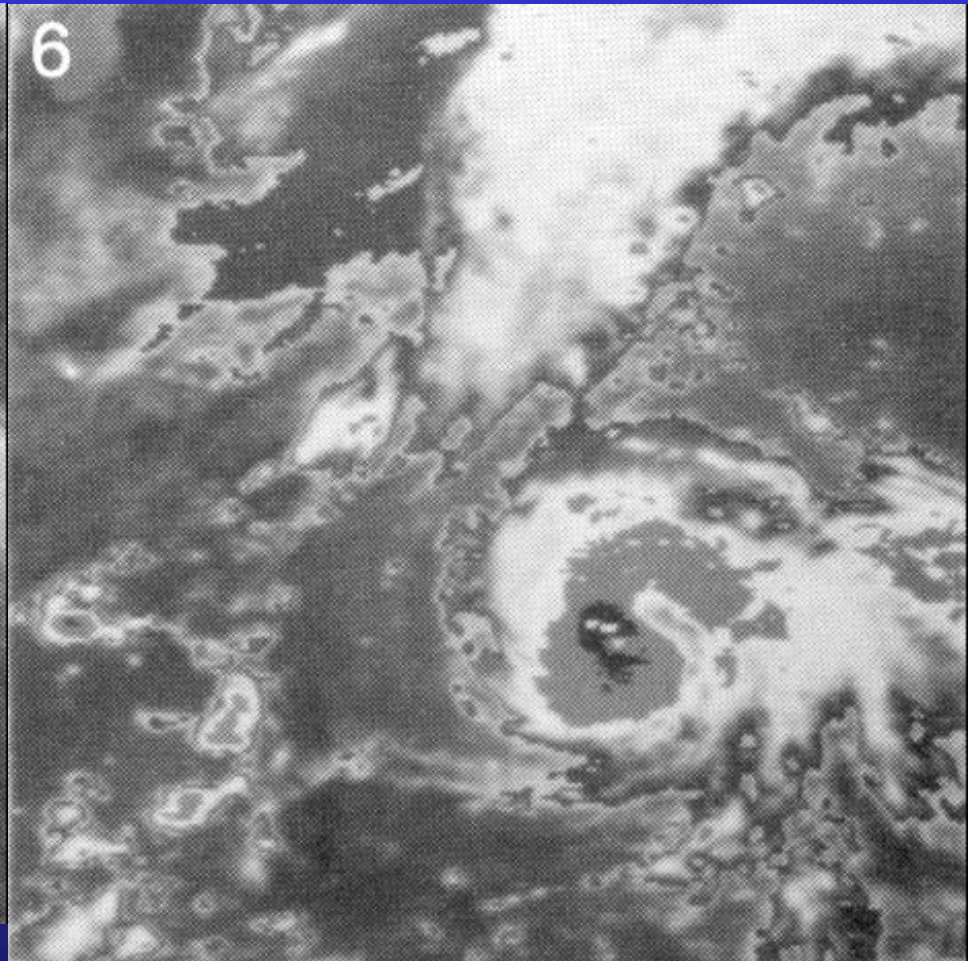
Infrared

Curved band pattern DT=2.5- Recon found 1006 mb for T2.4

Pattern Recognition Exercise 6



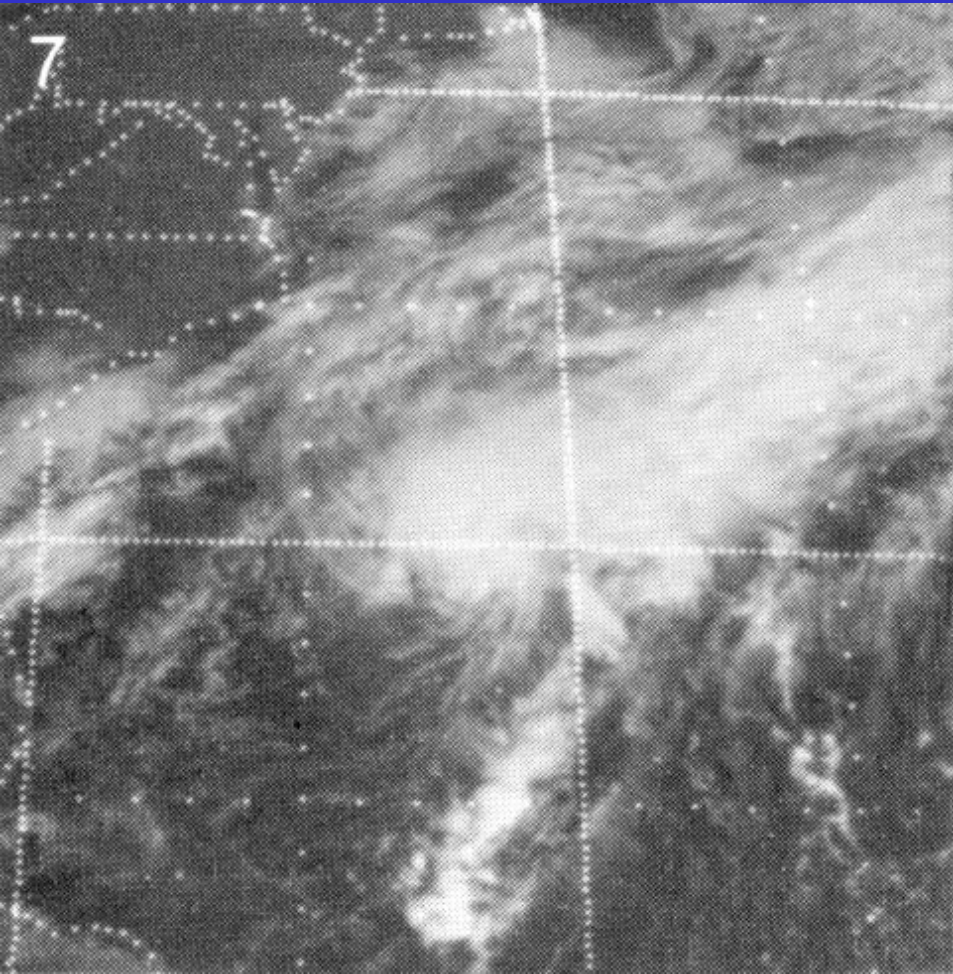
Visible



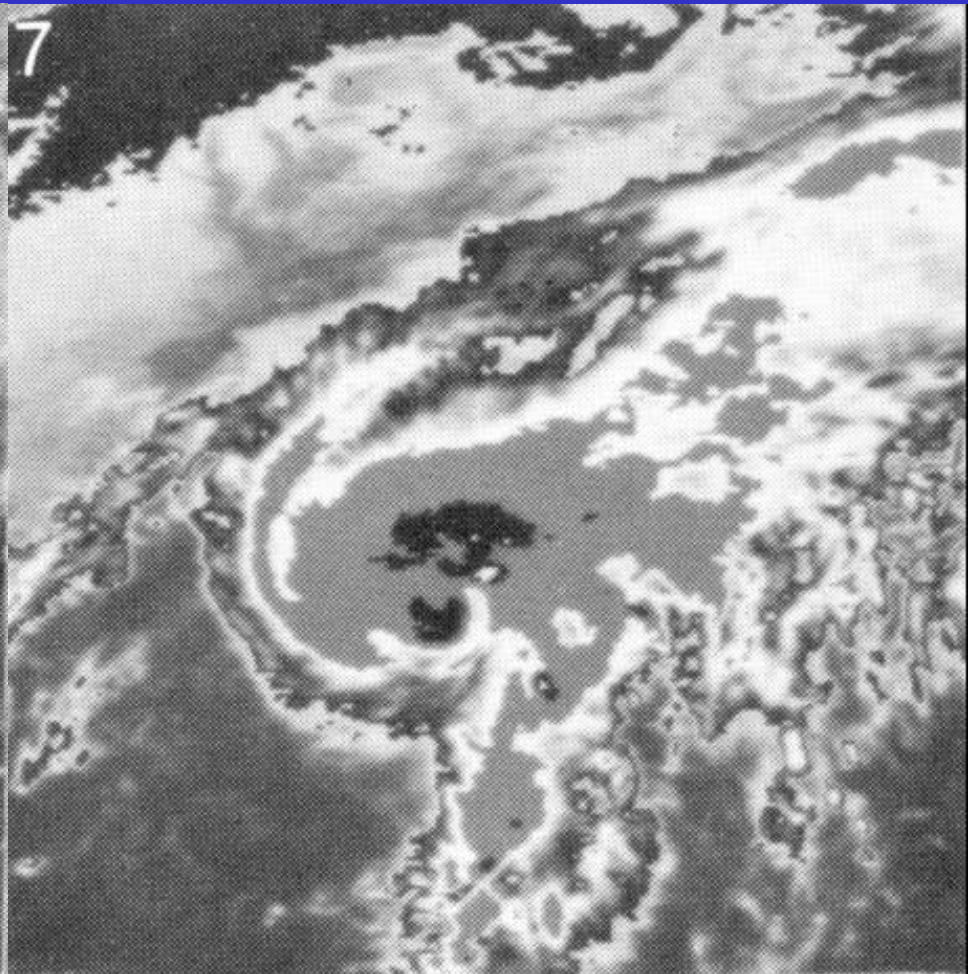
Infrared

VIS Eye Pattern DT=5.0+ Recon found 964 mb for T5.3

Pattern Recognition Exercise 7



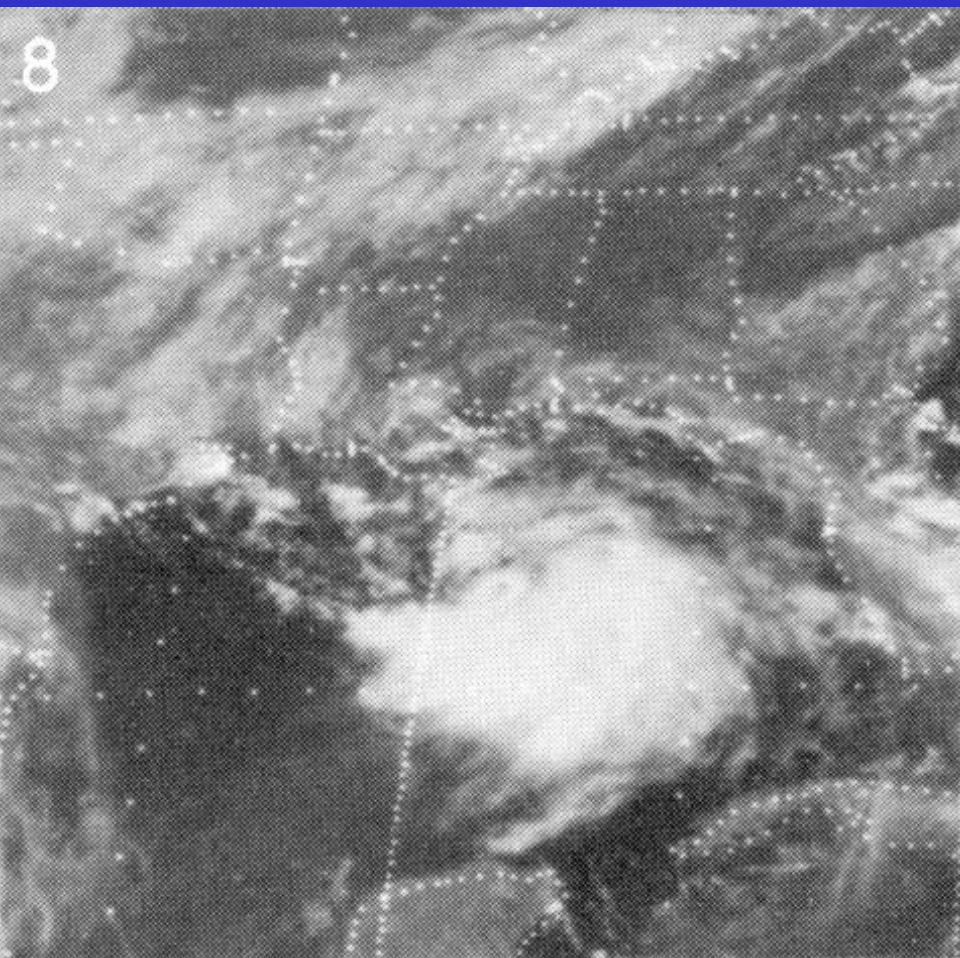
Visible



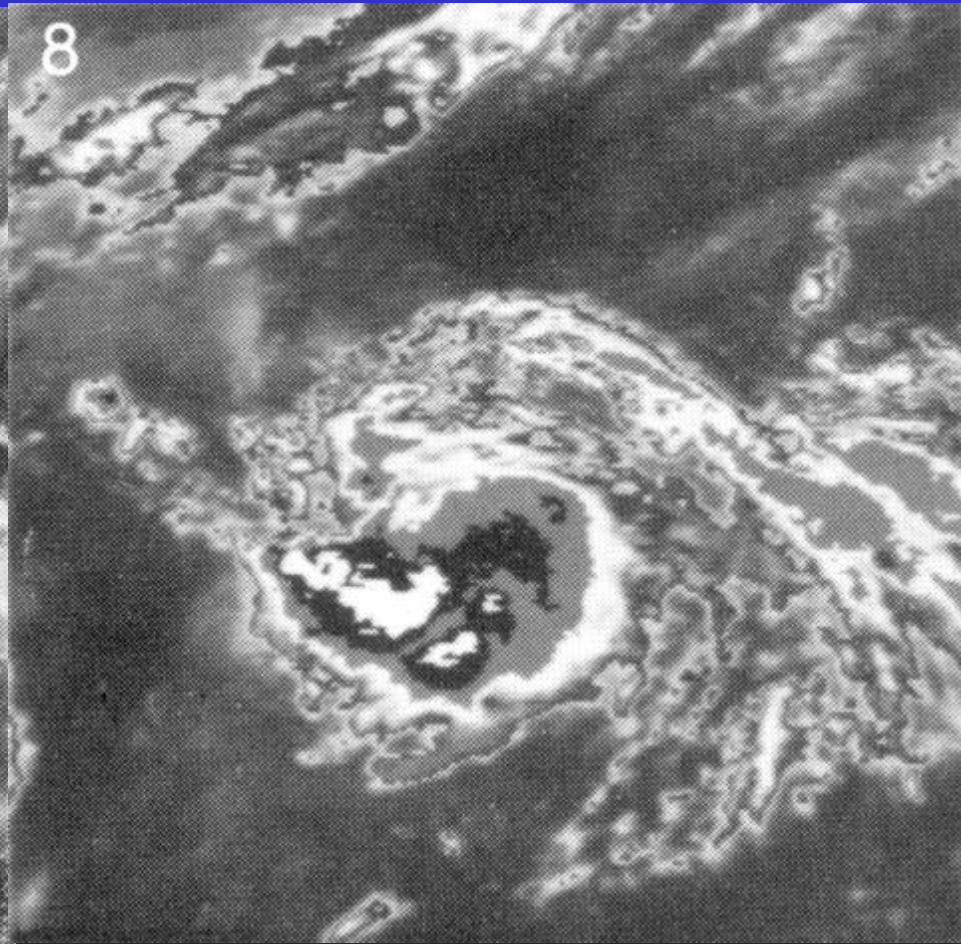
Infrared

VIS Eye Pattern DT=4.0- Recon found 990 mb for T3.8

Pattern Recognition Exercise 8



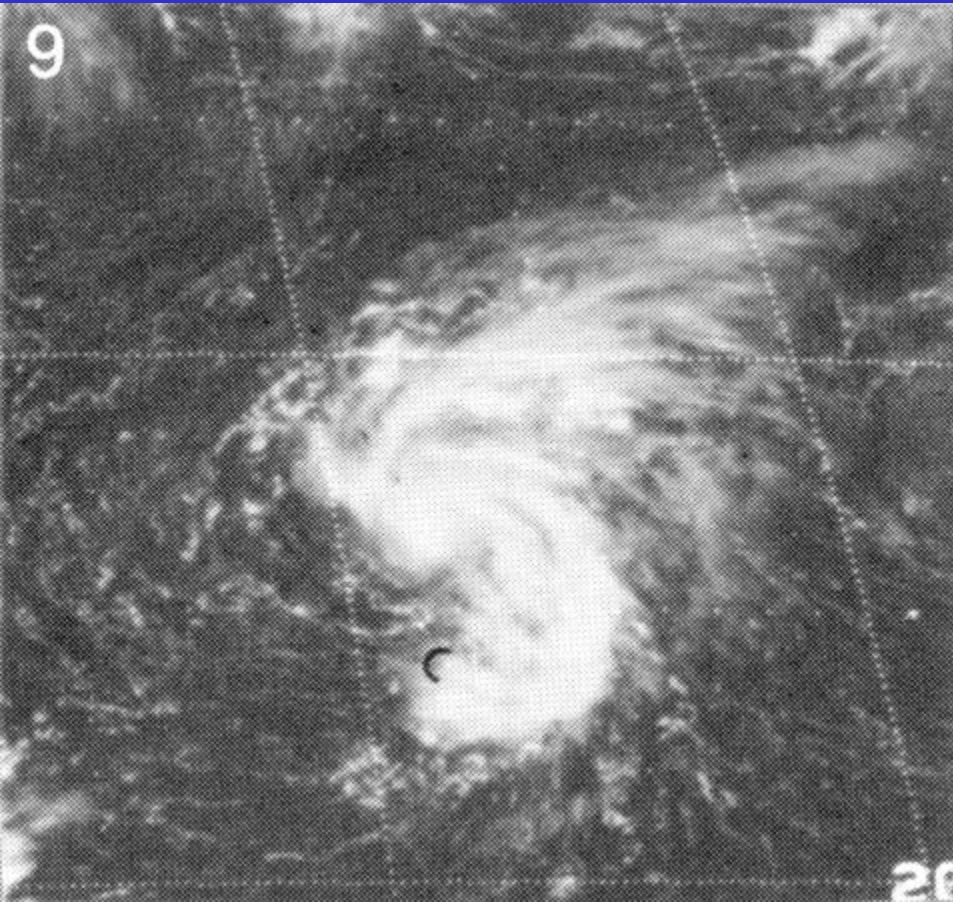
Visible



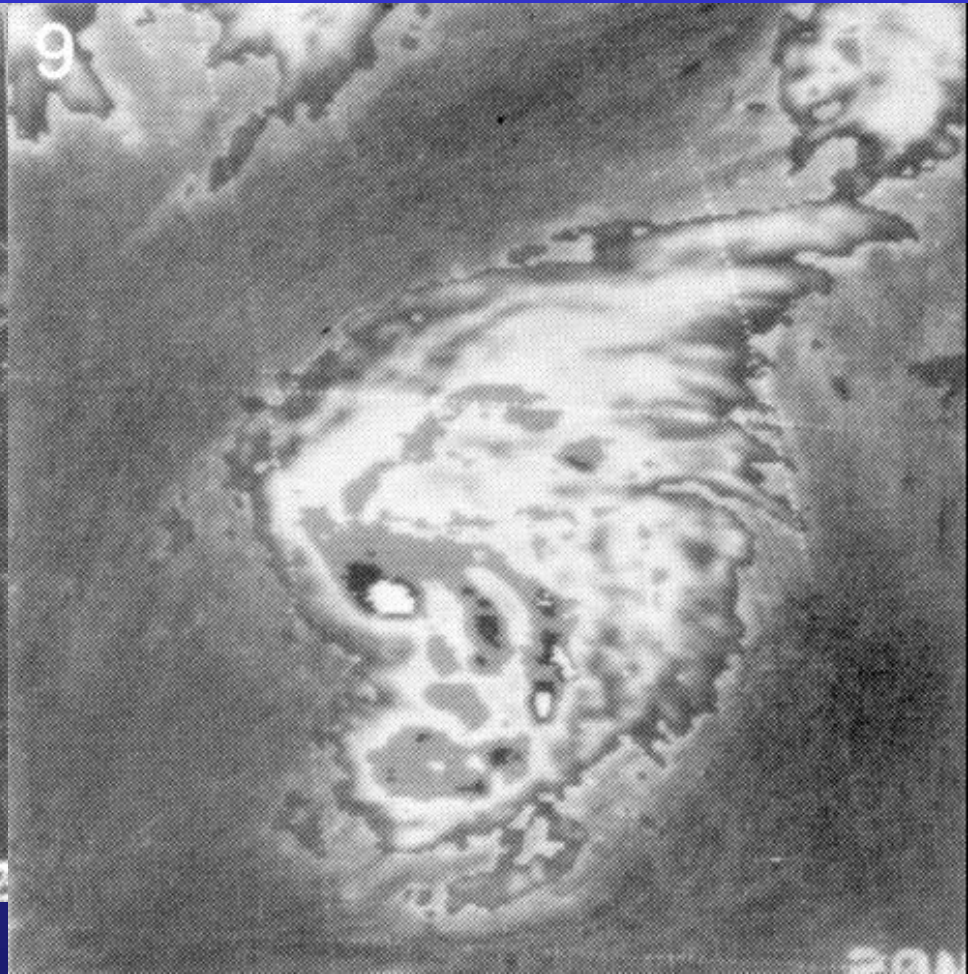
Infrared

Curved band pattern DT=1.5 Recon found 1011.4 mb for T1.7

Pattern Recognition Exercise 9



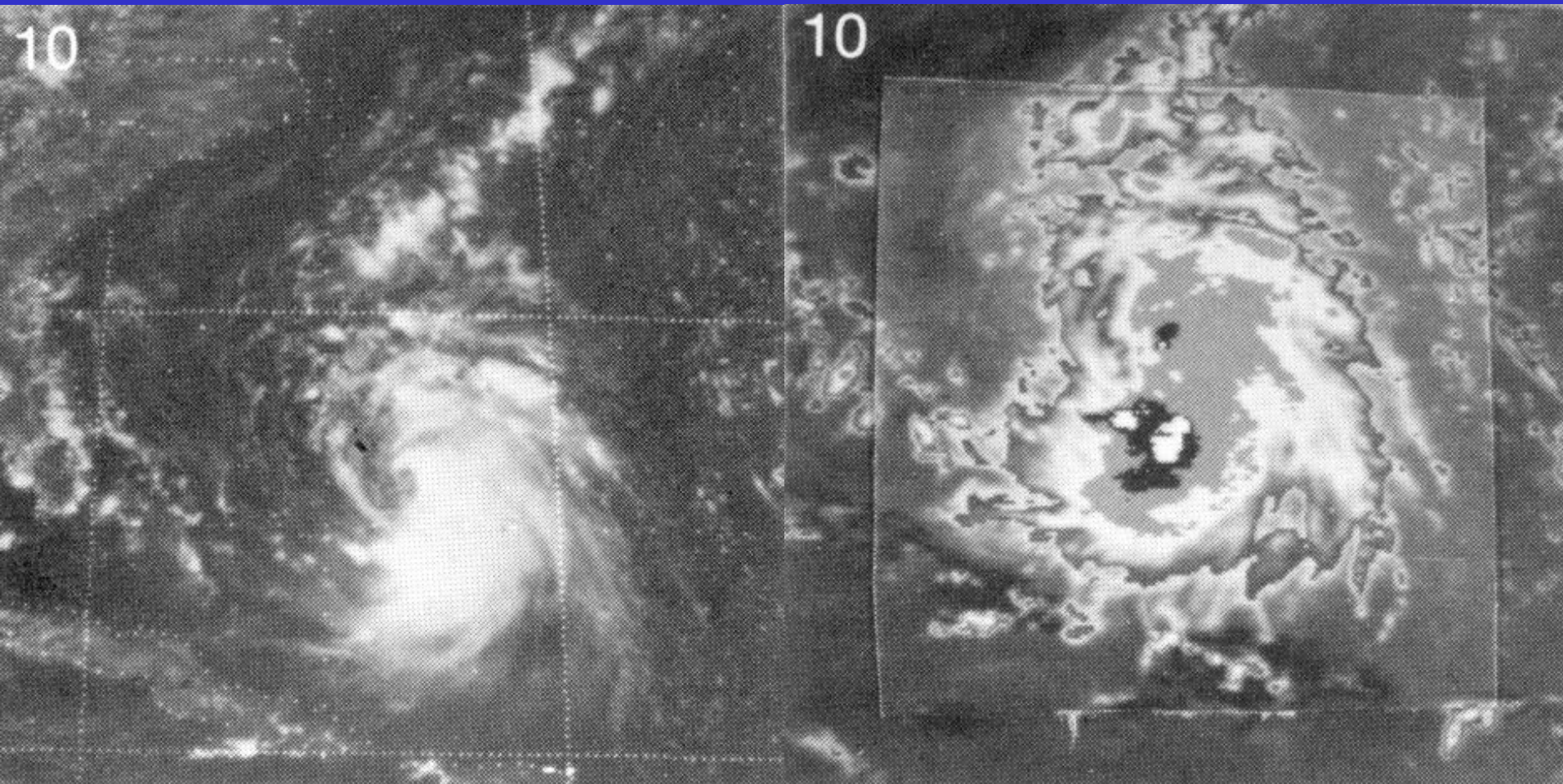
Visible



Infrared

Irregular CDO DT=3.5 Recon found 993 mb for T3.6

Pattern Recognition Exercise 10

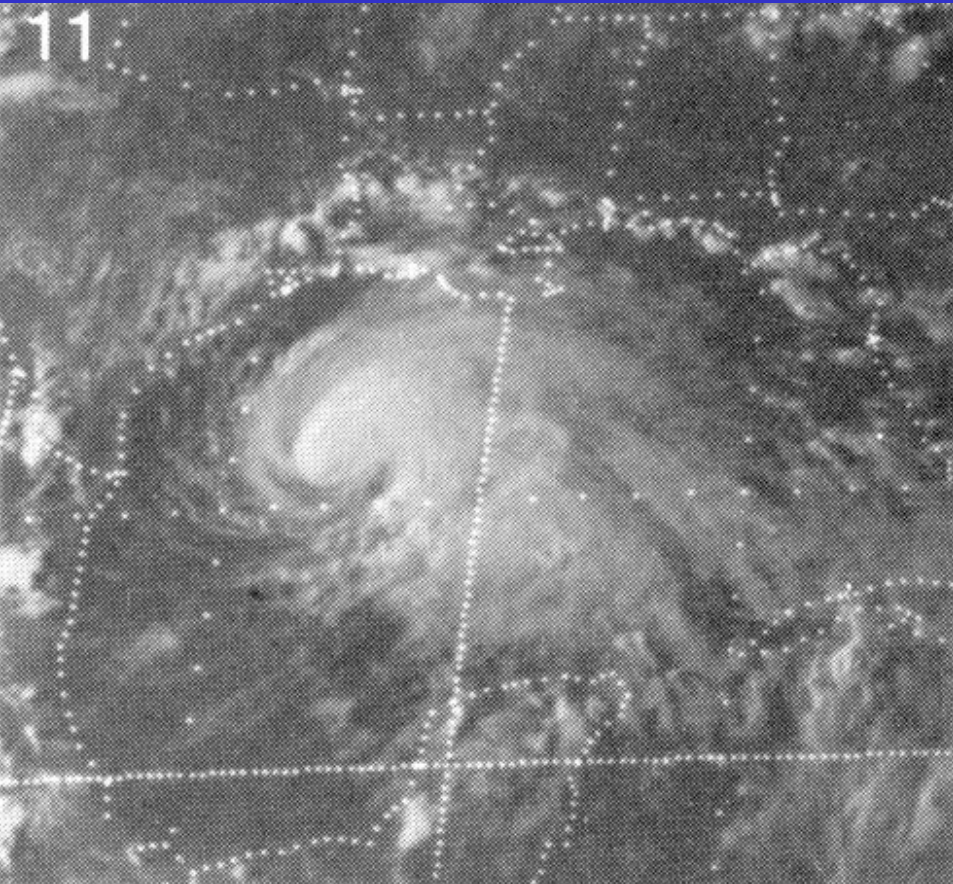


Visible

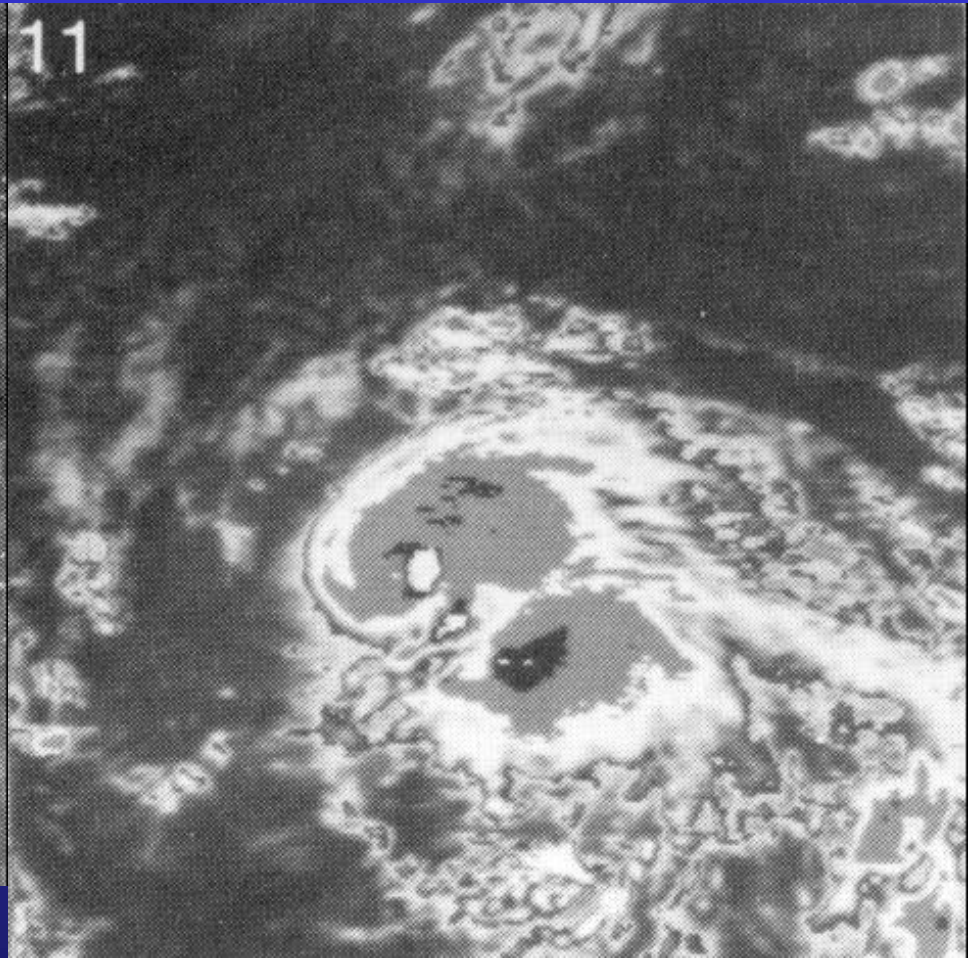
Infrared

Curved band pattern DT=2.5 Recon found 1006 mb for T2.4

Pattern Recognition Exercise 11



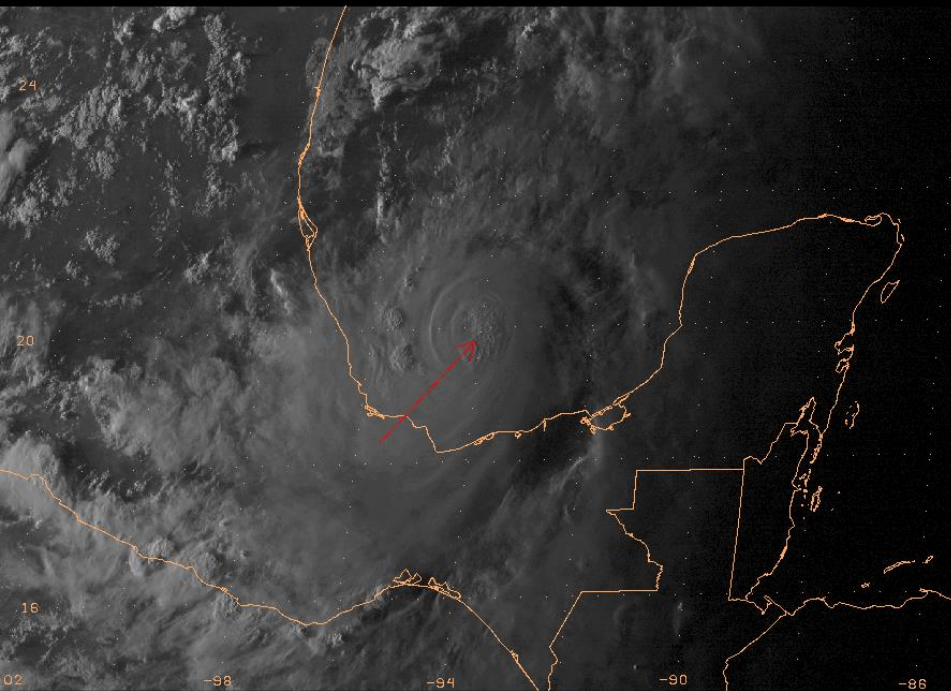
Visible



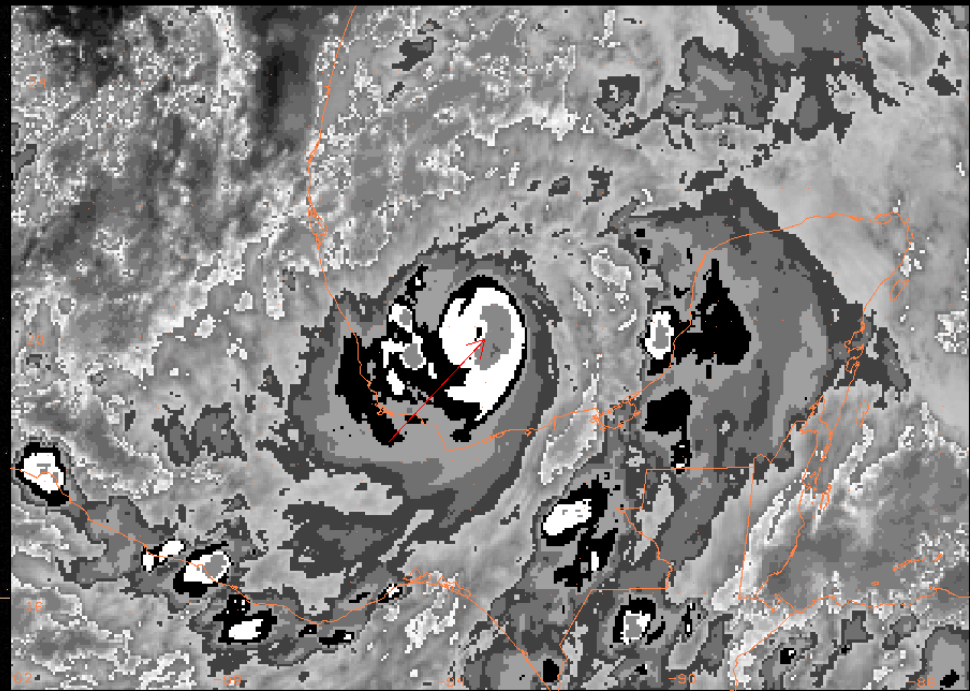
Infrared

VIS CDO DT=4.5 Recon found 979 mb for T4.5

Pattern Recognition Exercise 12



GOES13 VIS 19.8 -94.1 20100916_2345



GOES13 IR 19.8 -94.1 20100916_2345

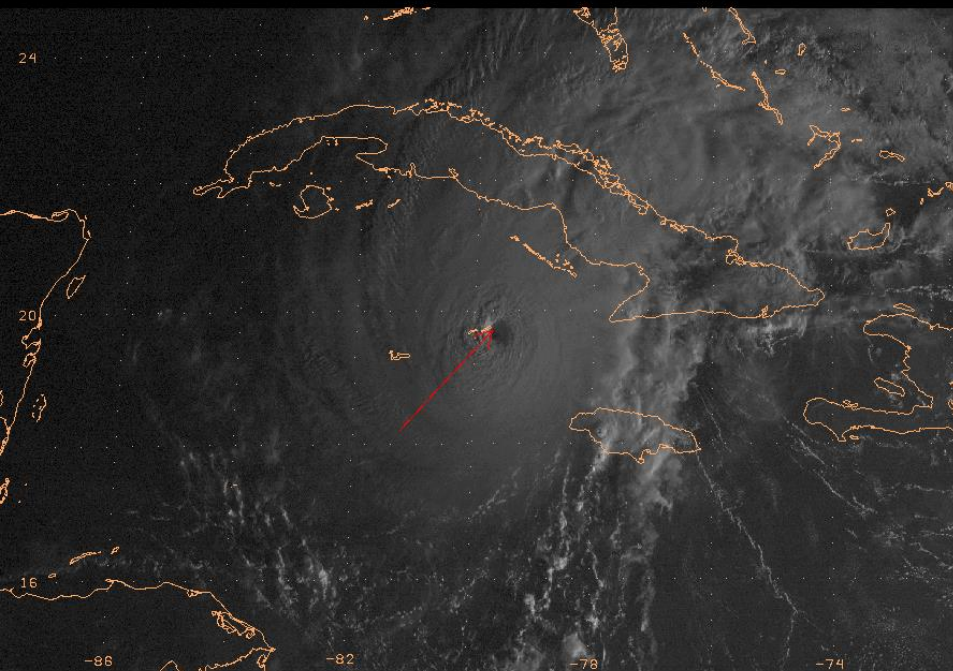
Visible

Infrared

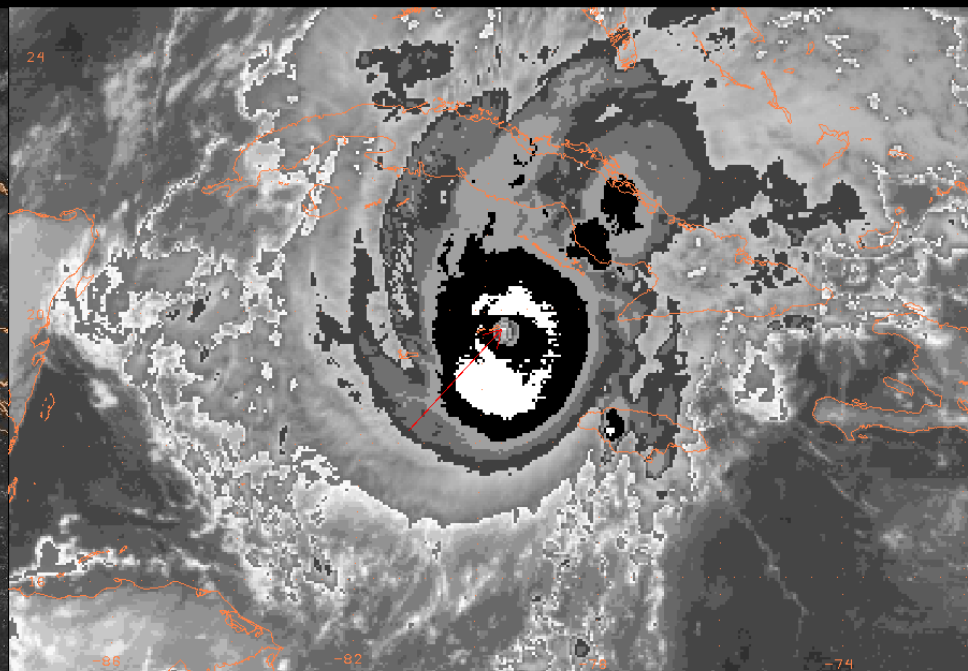
VIS CDO/IR EMBDD CNTR DT=5.0

Recon-based best track 90 kt.

Pattern Recognition Exercise 13



GOES12 VIS 19.7 -79.7 20081108_1145



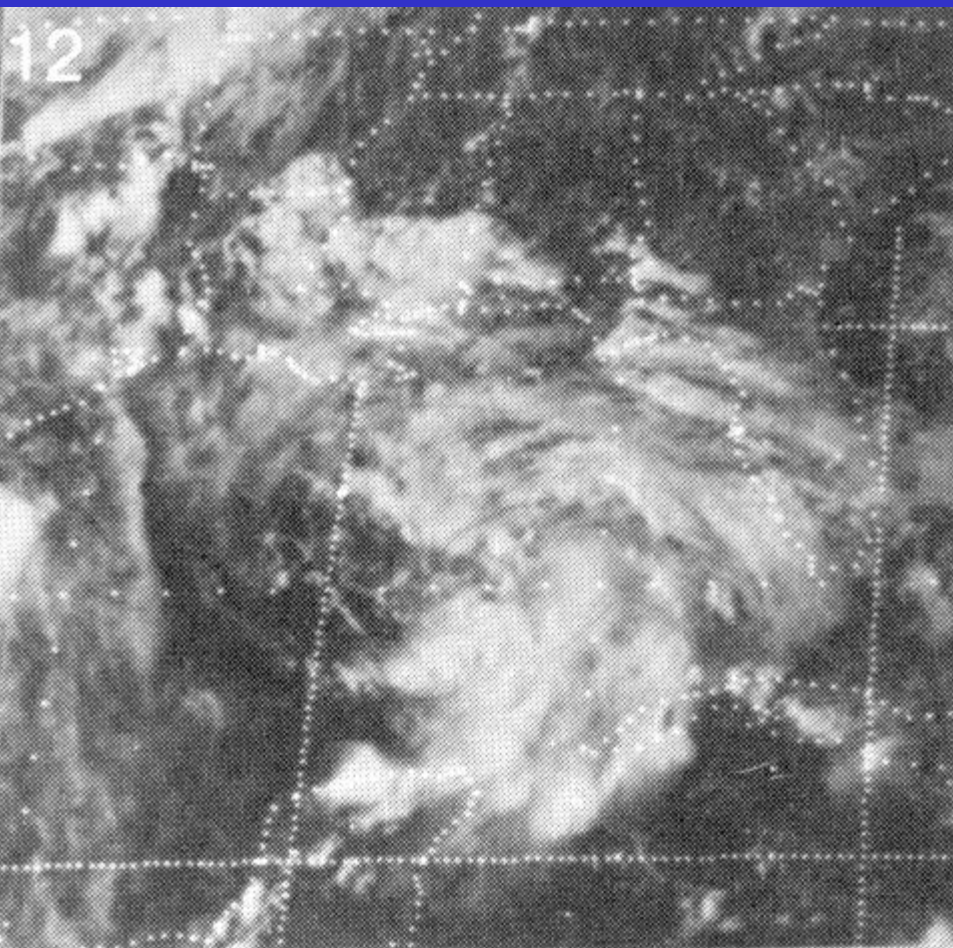
GOES12 IR 19.7 -79.7 20081108_1145

Visible

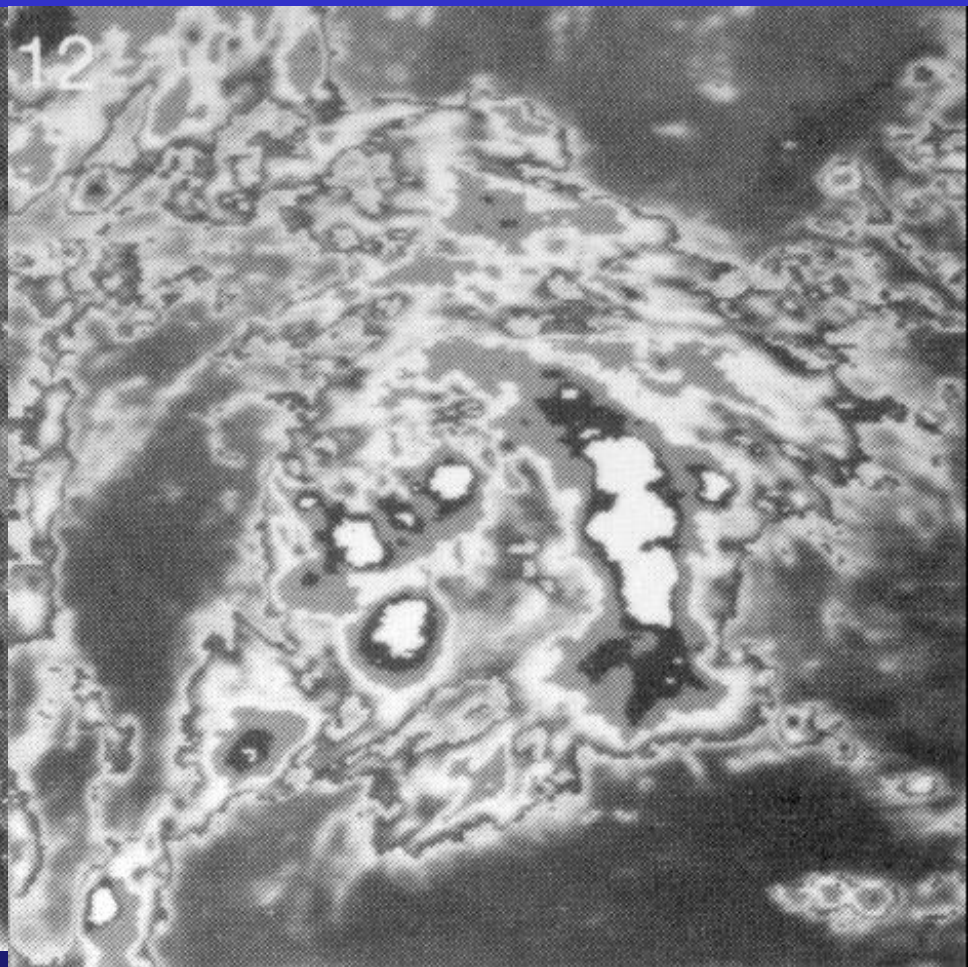
Infrared

IR EYE DT=6.5 Recon-based best track 125 kt.

Pattern Recognition Exercise 14



Visible



Infrared

Curved band pattern DT=1.5 Recon not available

