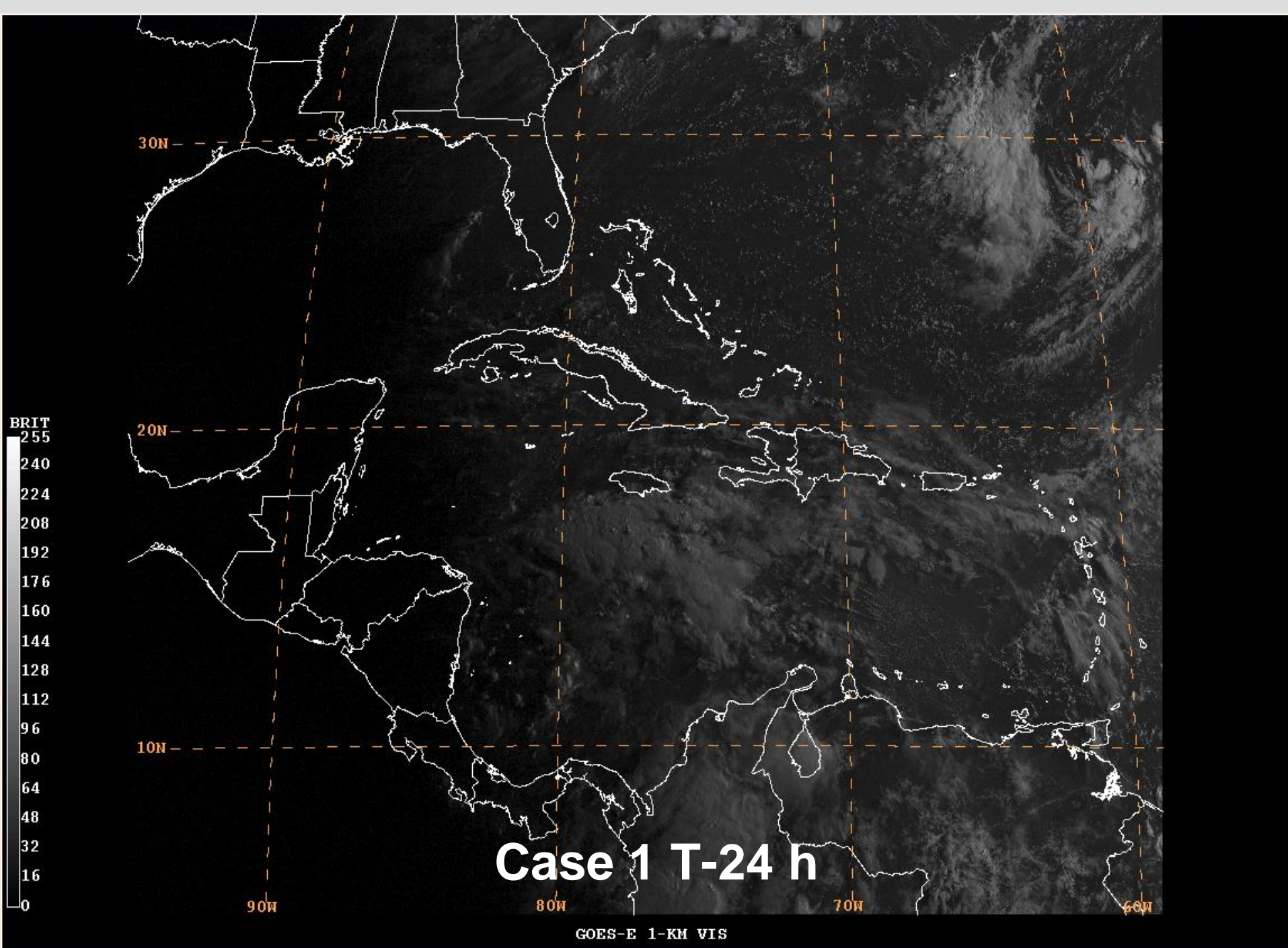


# **FORECAST EXERCISE**

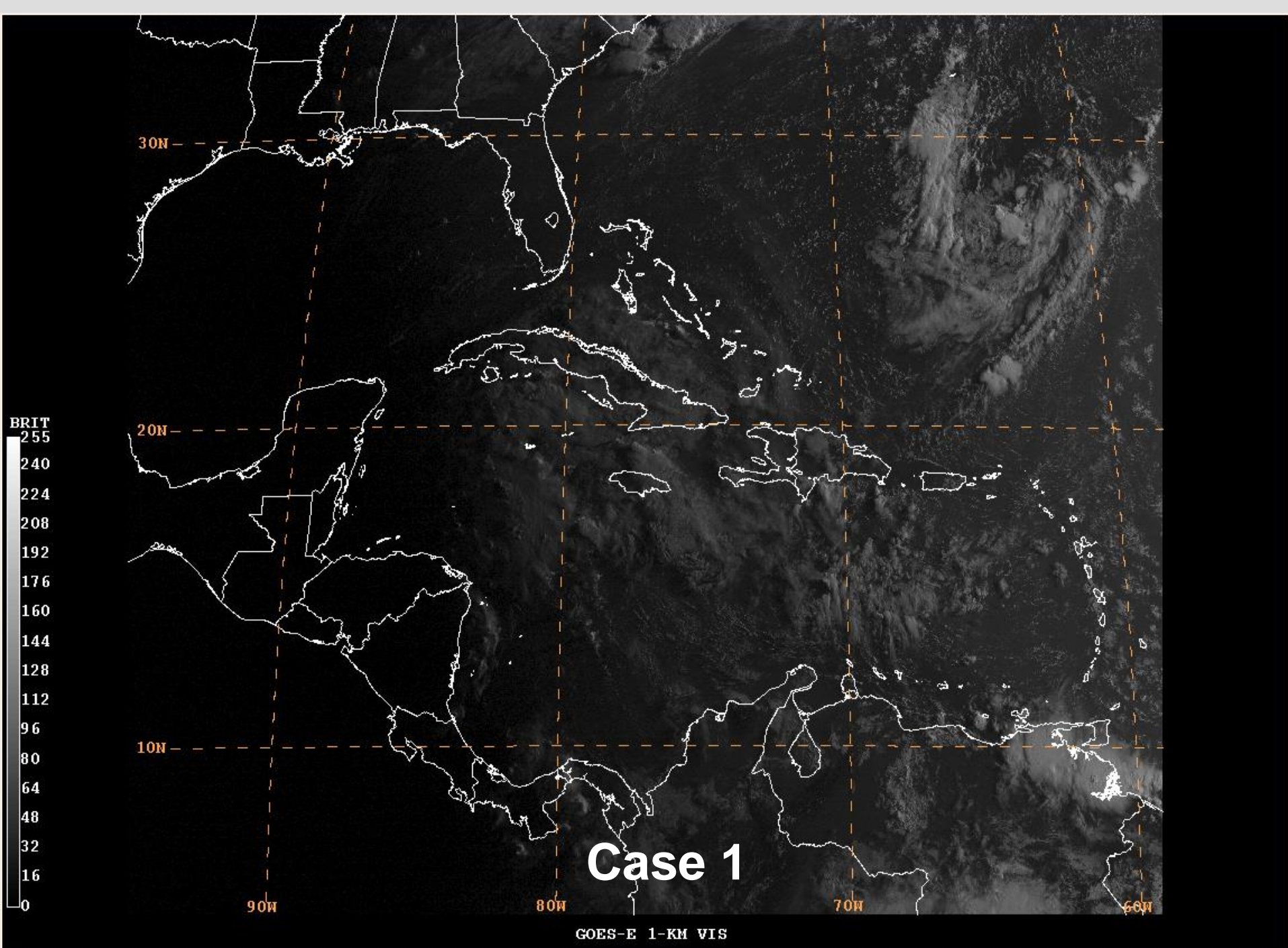
**YOU ARE GIVEN 2 CASES (CASE 1 & CASE 2) DURING THE HURRICANE SEASON OF A PRE-EXISTING AREA OF DISTURBED WEATHER (ASSOCIATED WITH A TROPICAL WAVE) OVER THE CENTRAL CARIBBEAN SEA.**

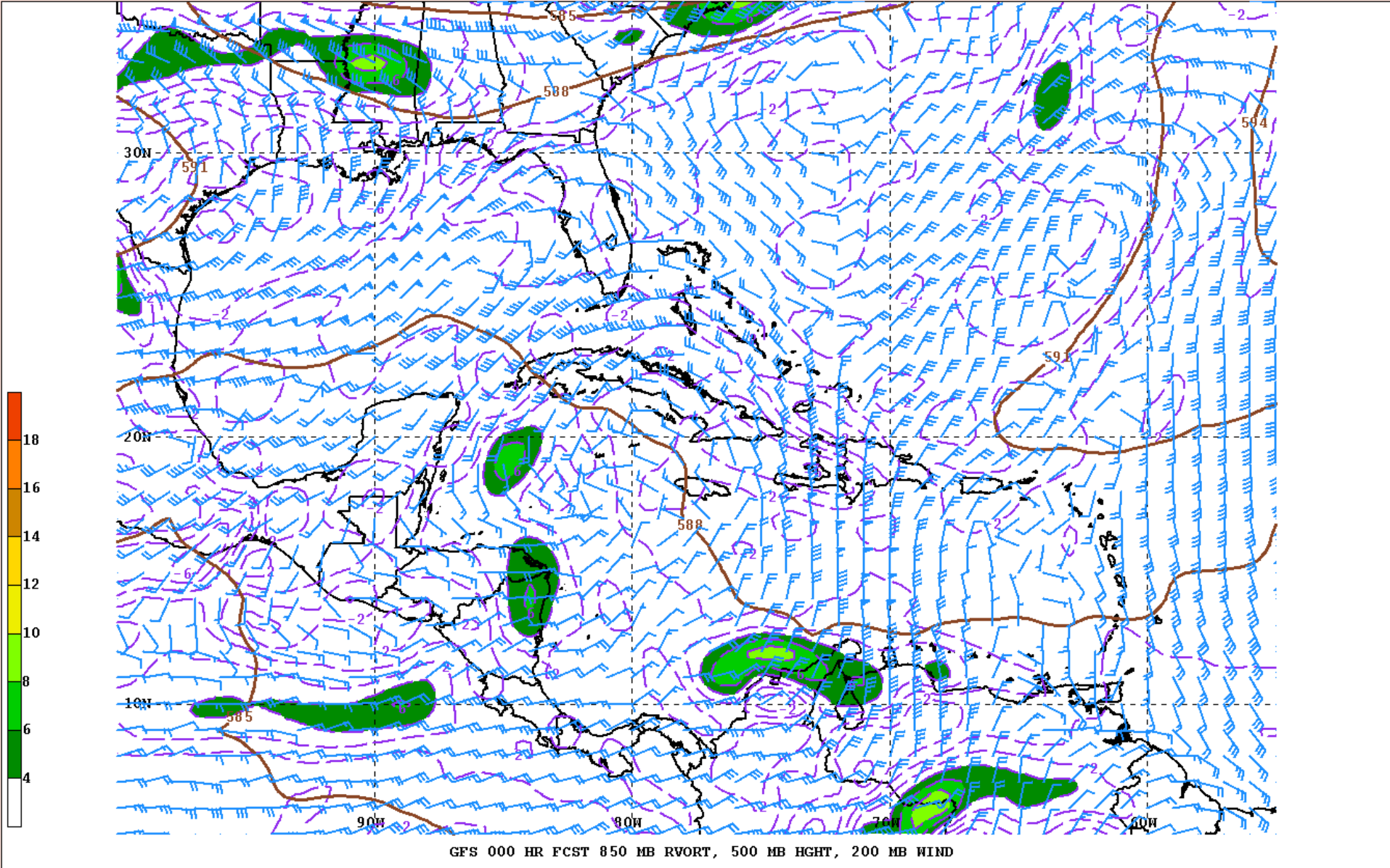
**YOU HAVE SATELLITE IMAGERY, GFS MODEL ANALYSES AND FORECASTS AT 850, 500, 200 MB, AND SURFACE DATA PLOTS FOR TIME T (AND T-24 HOURS FOR THE SURFACE DATA). IT IS RECOMMENDED THAT YOU PERFORM A SEA-LEVEL PRESSURE ANALYSIS FOR THESE SURFACE CHARTS, WITH A 2 MB INTERVAL FOR THE ISOBARS.**

**MAKE A FORECAST OF TC FORMATION FOR CASE 1 AND CASE 2. WRITE A BRIEF “TROPICAL WEATHER OUTLOOK” (TWO) FOR EACH CASE, INCLUDING THE PROBABILITIES (TO THE NEAREST 10%) OF TC FORMATION WITHIN 48 AND 120 HOURS. WHICH CASE SEEMS MORE LIKELY TO DEVELOP, AND WHY?**





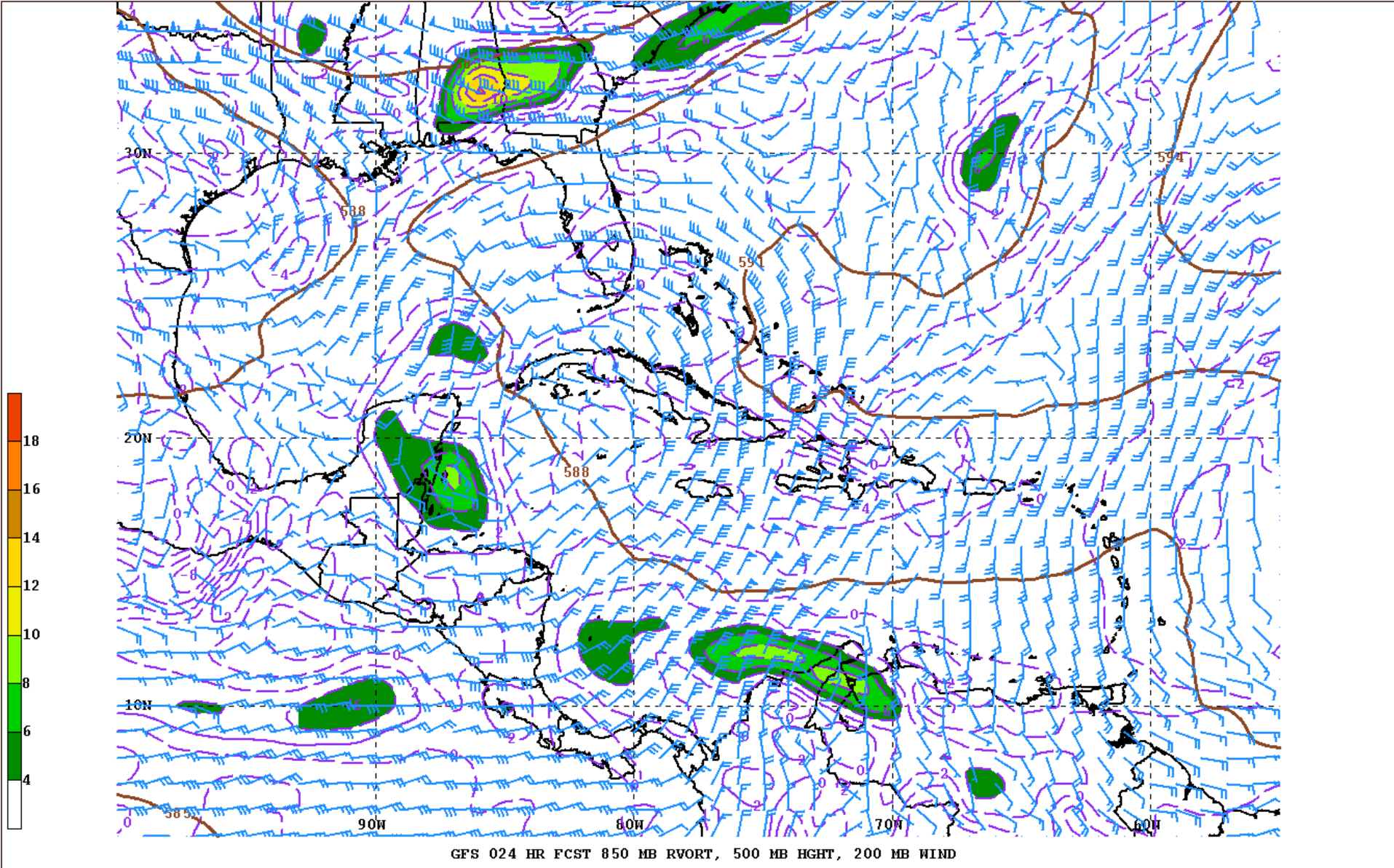




# Case 1

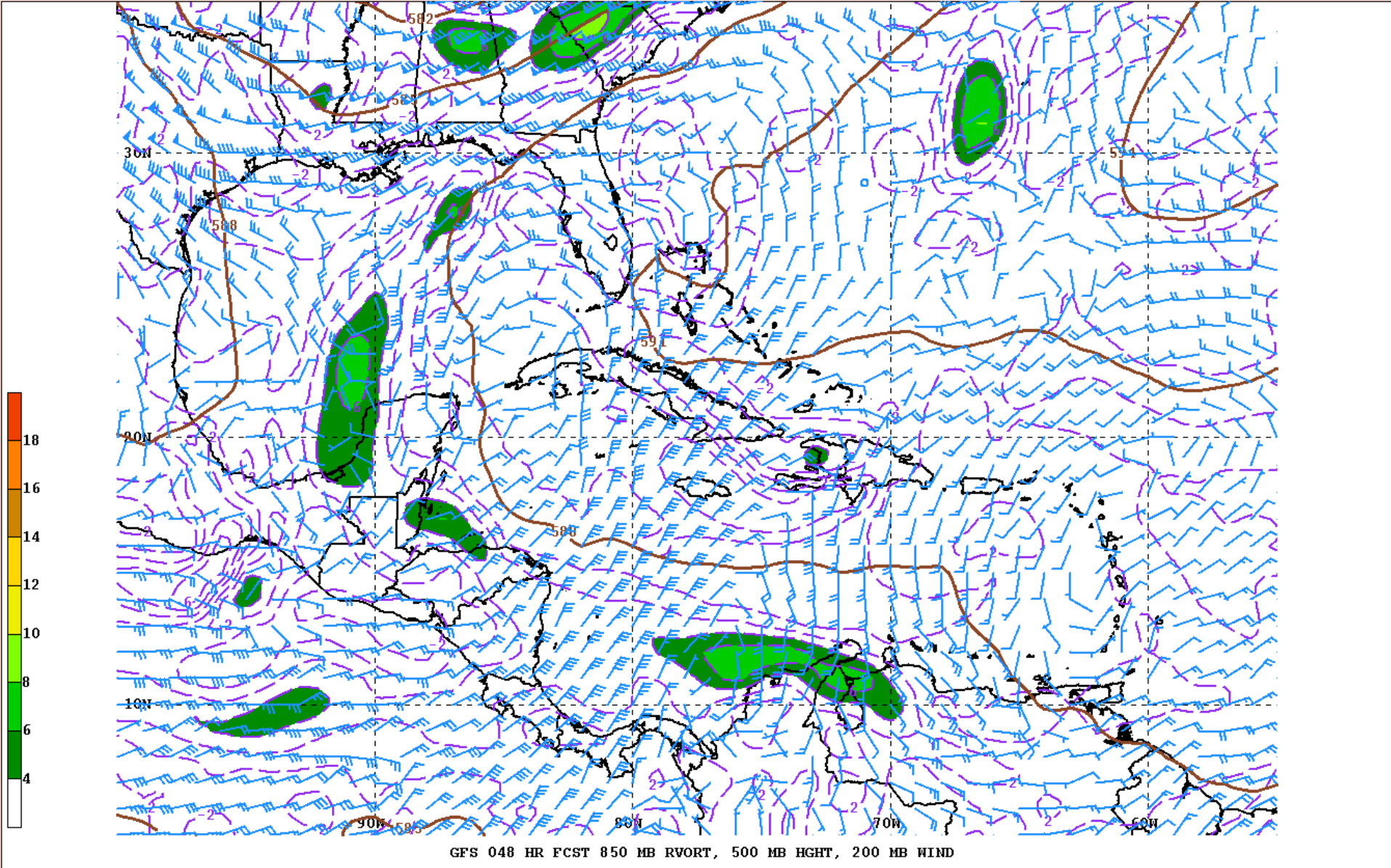
## GFS 00 h





# Case 1

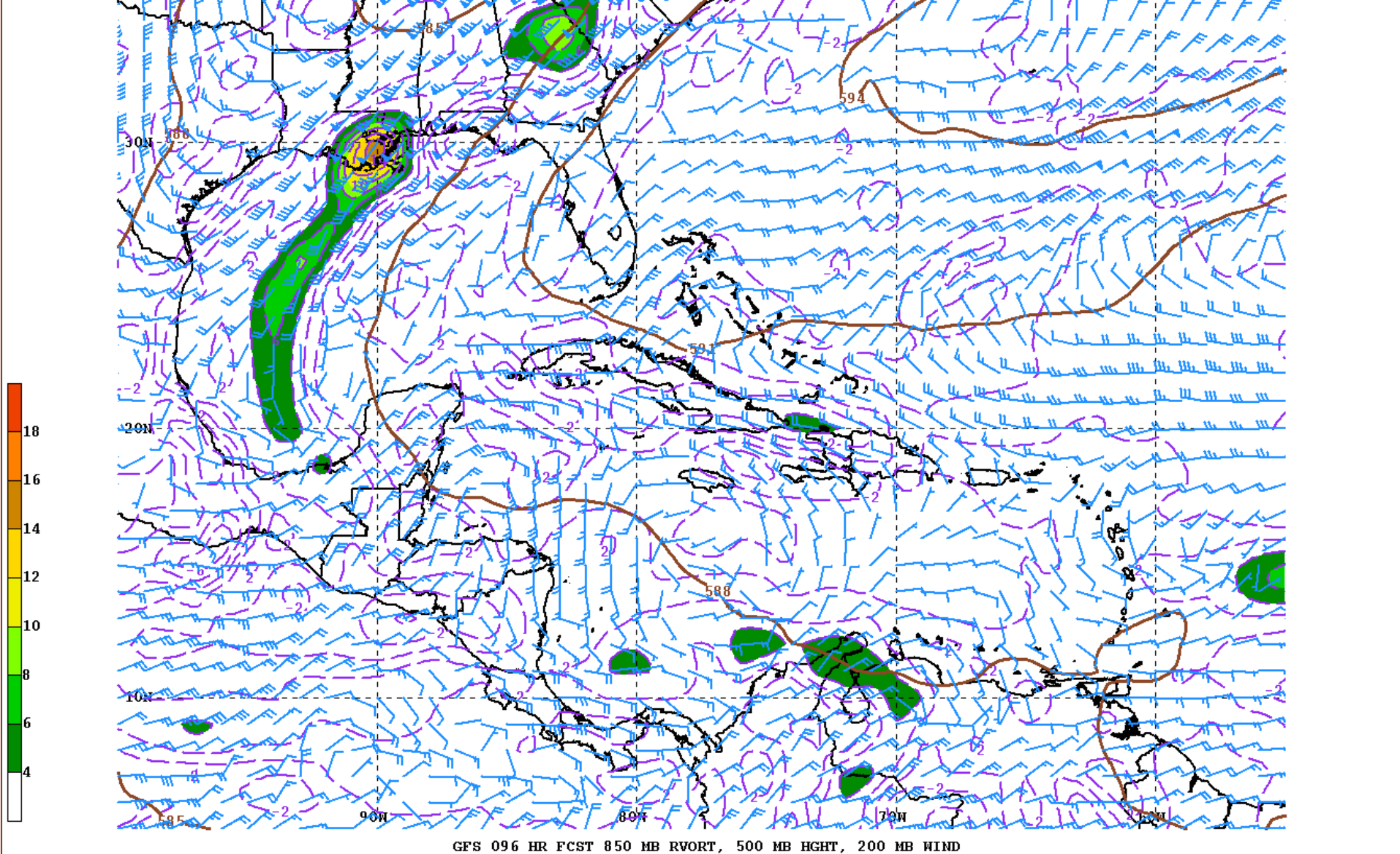
## GFS 24 h



**Case 1**  
**GFS 48 h**



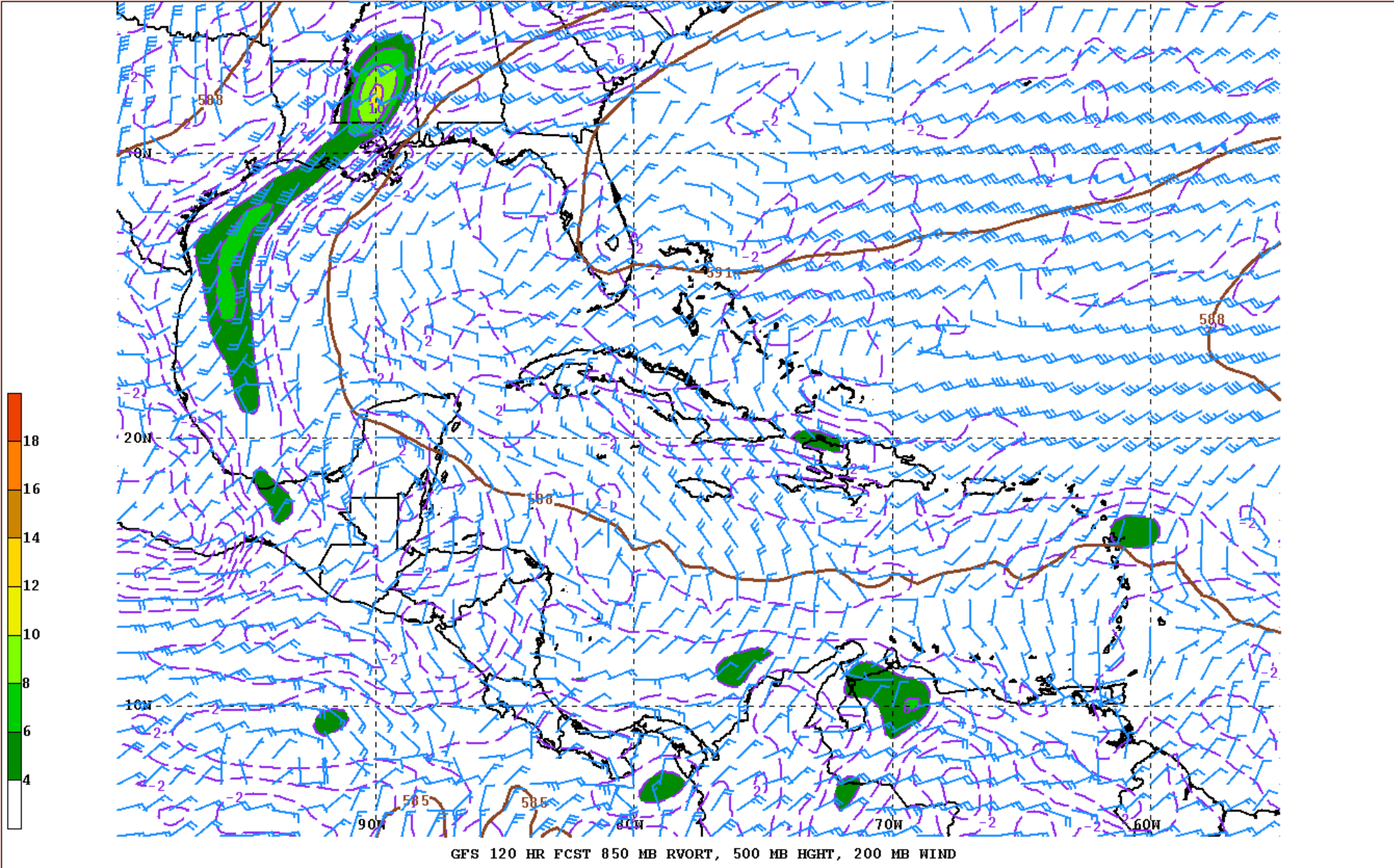




# Case 1

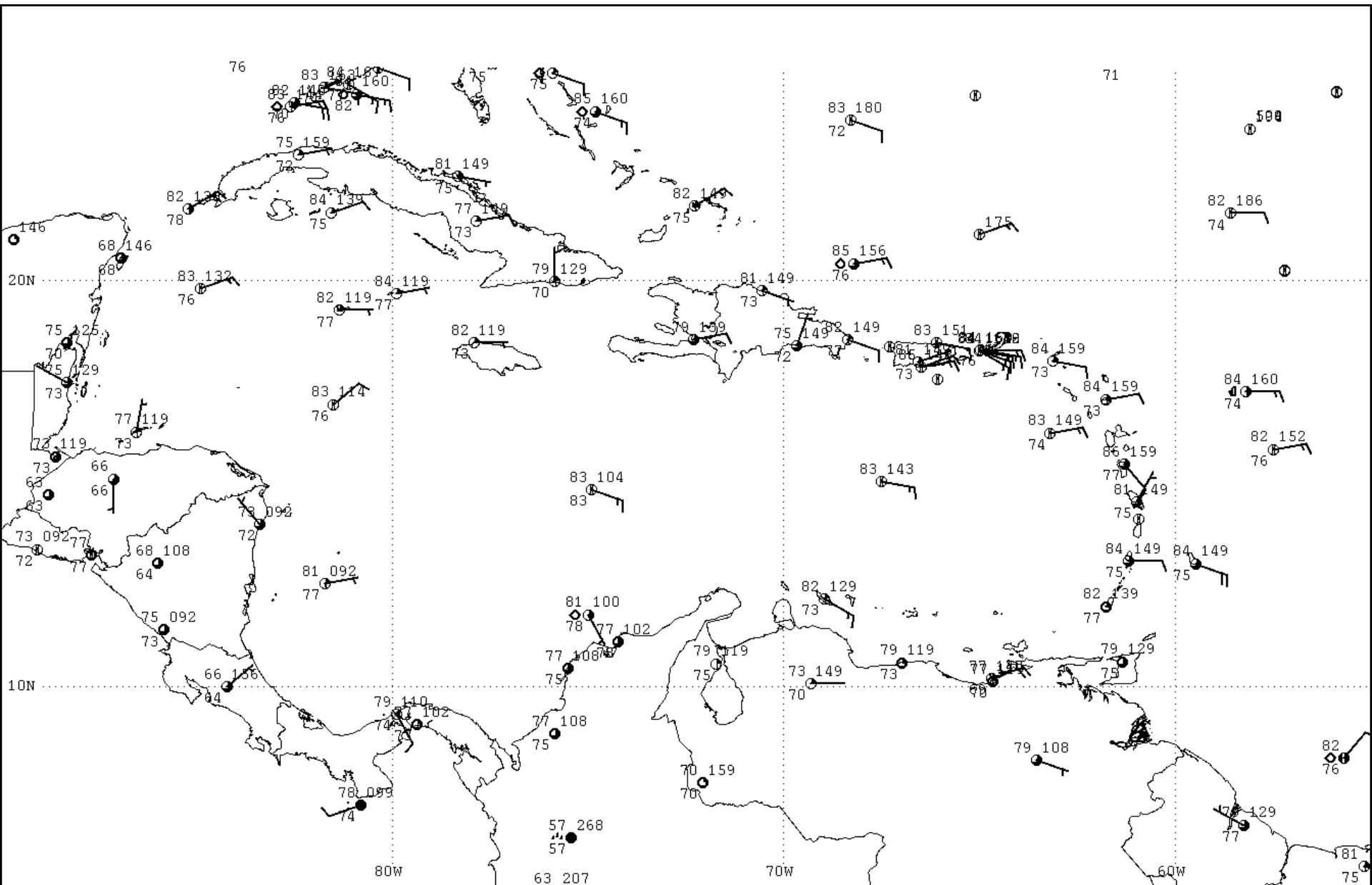
## GFS 96 h





# Case 1

## GFS 120 h



Surface Observations Case 1 Time T-24 Hours





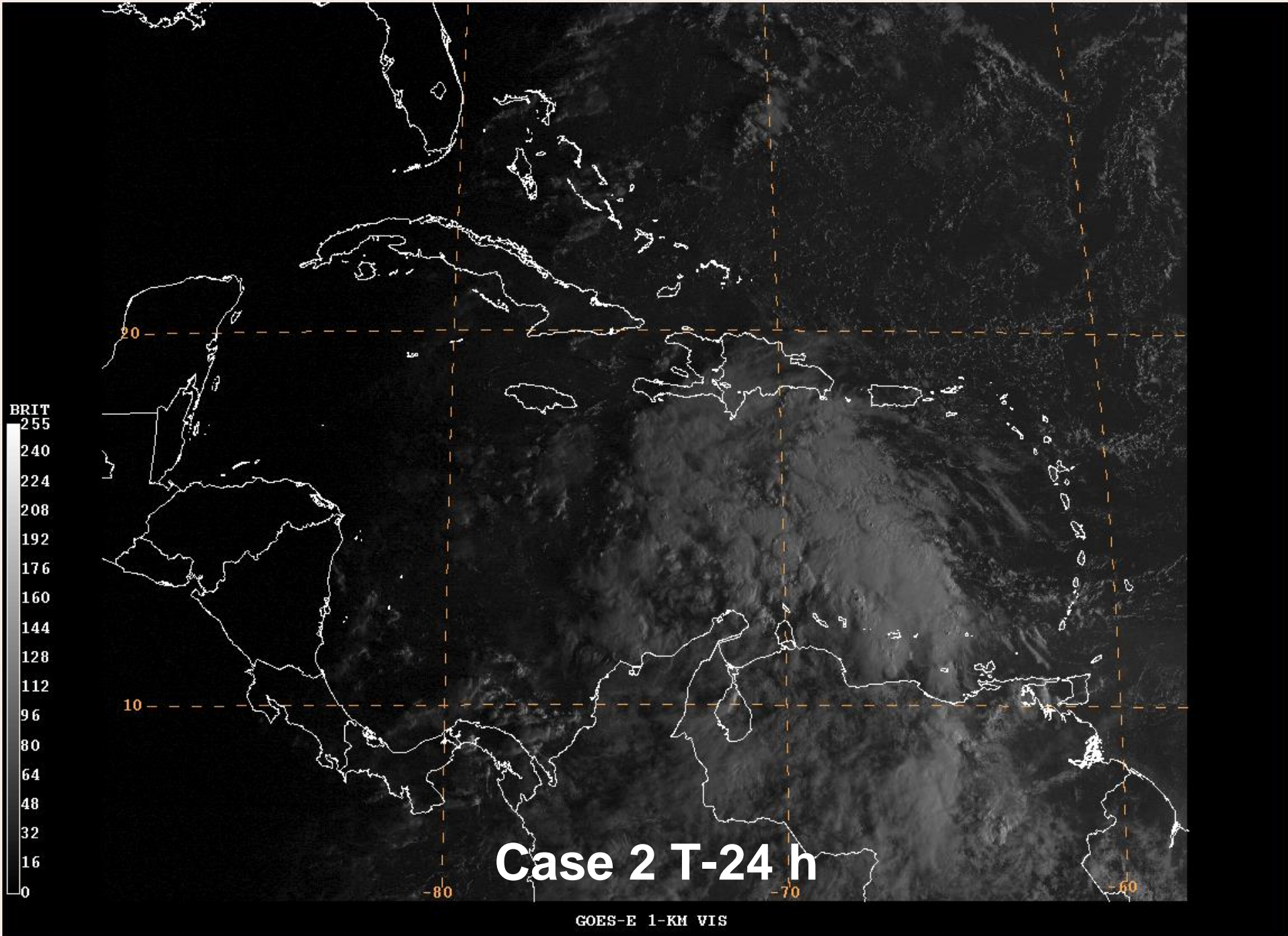
**TROPICAL WEATHER OUTLOOK  
NWS NATIONAL HURRICANE CENTER MIAMI FL  
200 PM EDT WED AUG 12 2015**

**FOR THE NORTH ATLANTIC...CARIBBEAN SEA AND THE GULF OF MEXICO...**

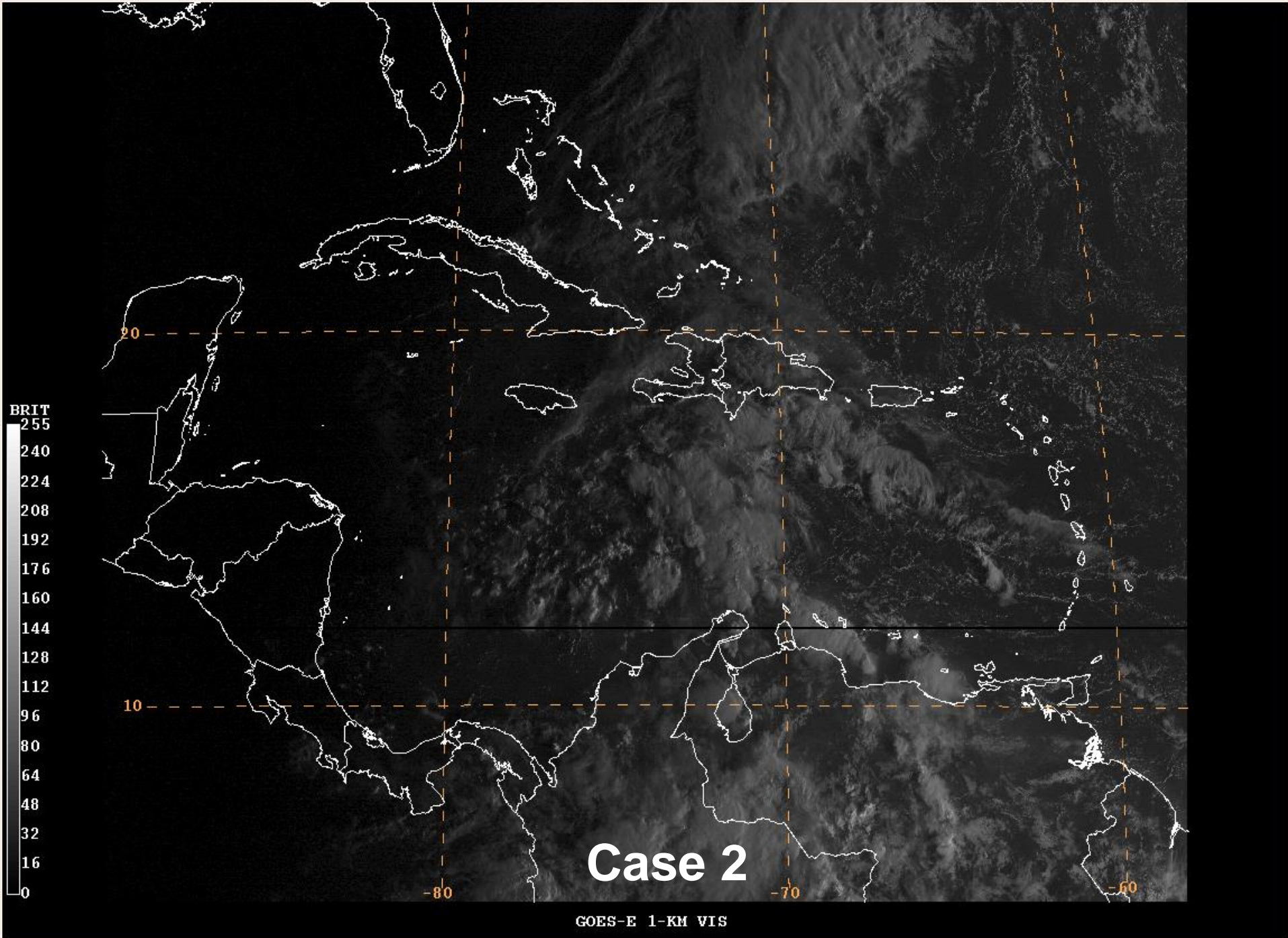
**...enter some discussion of the disturbance associated with Case 1 below...**

**...now enter the categories and percentage chances of development below...**

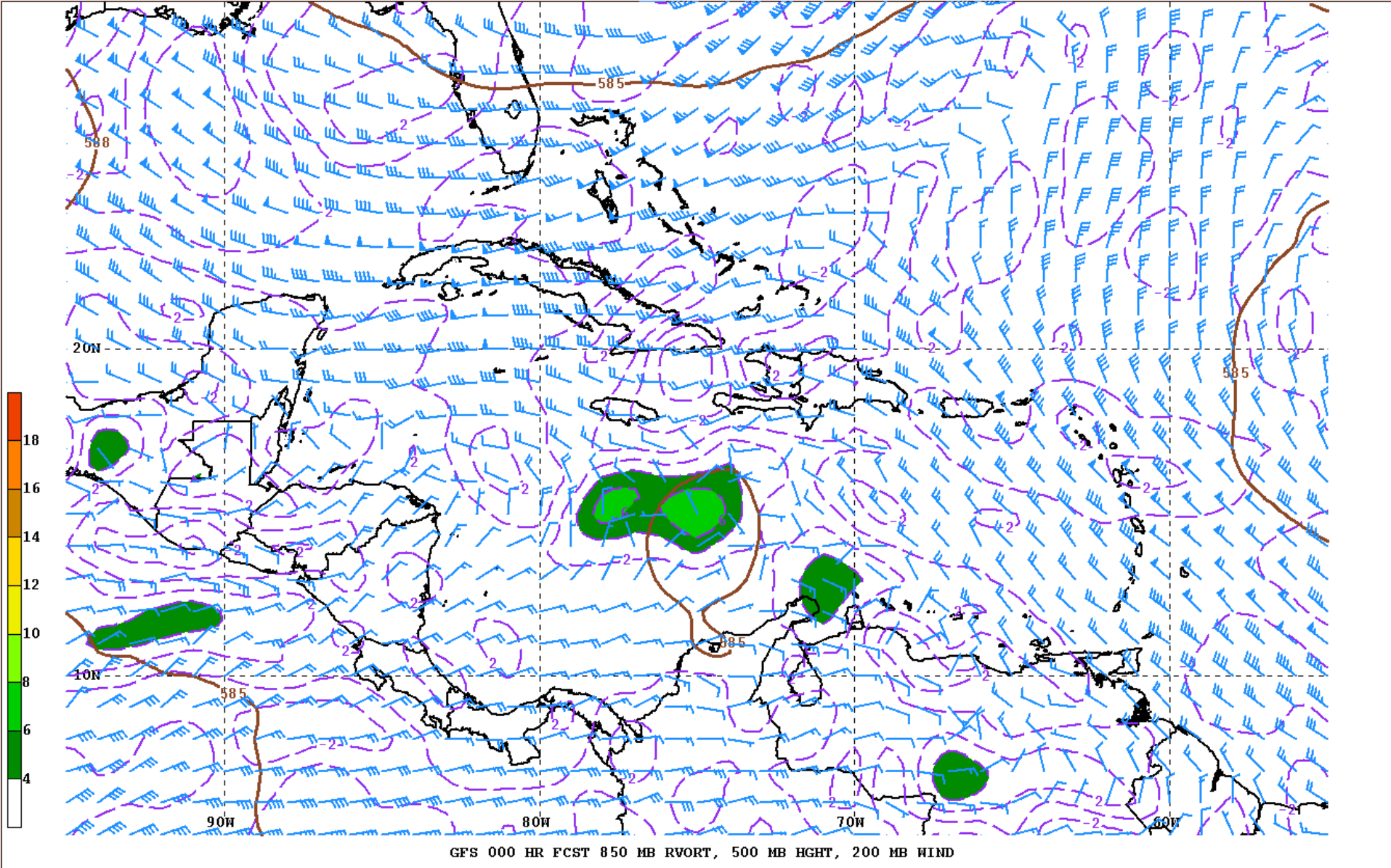
**THIS SYSTEM HAS A \_\_\_\_ CHANCE...\_\_\_\_ PERCENT...OF BECOMING A  
TROPICAL CYCLONE DURING THE NEXT 48 HOURS...AND A \_\_\_\_ CHANCE...\_\_\_\_  
PERCENT...OF BECOMING A TROPICAL CYCLONE DURING THE NEXT 5 DAYS.**



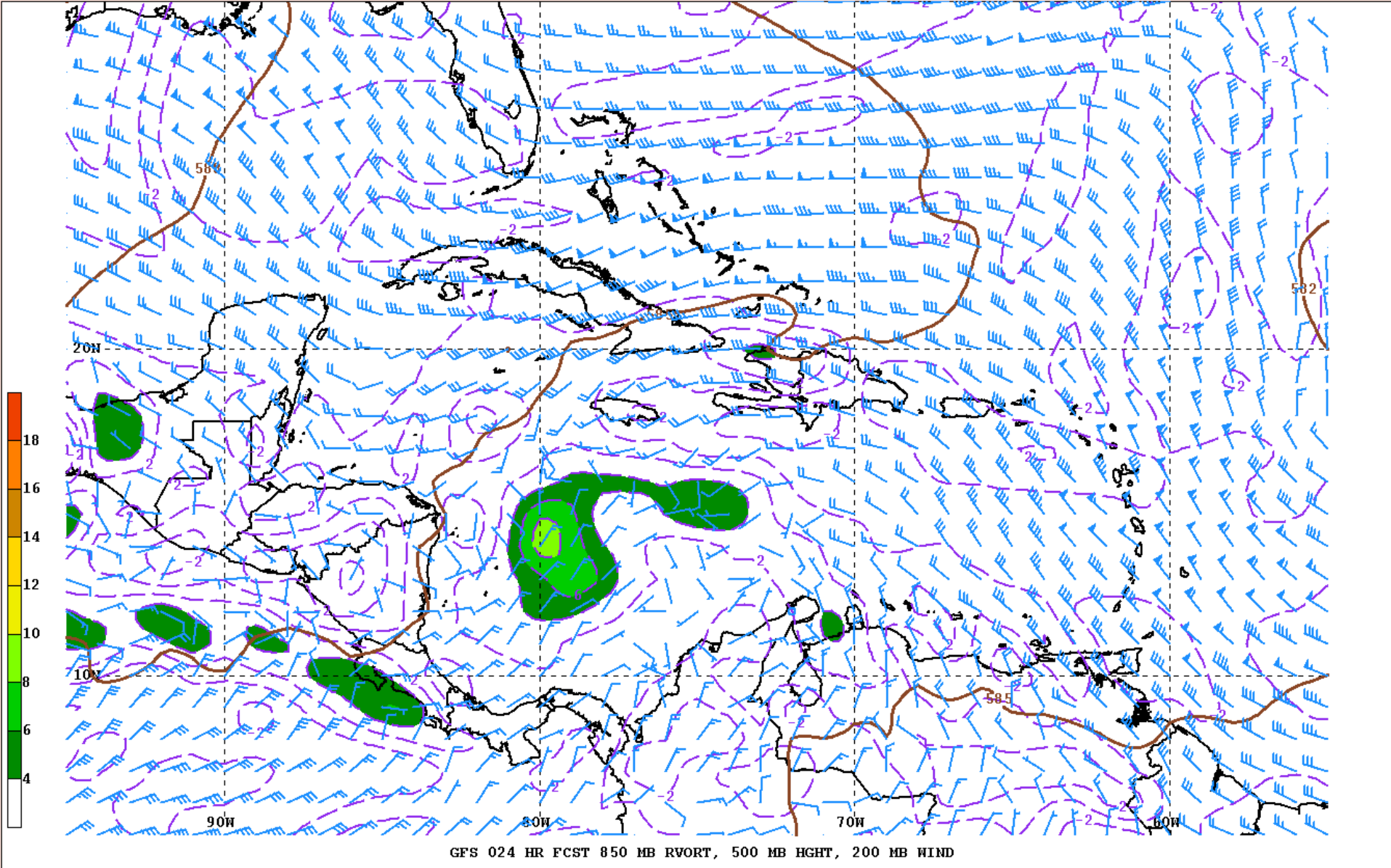






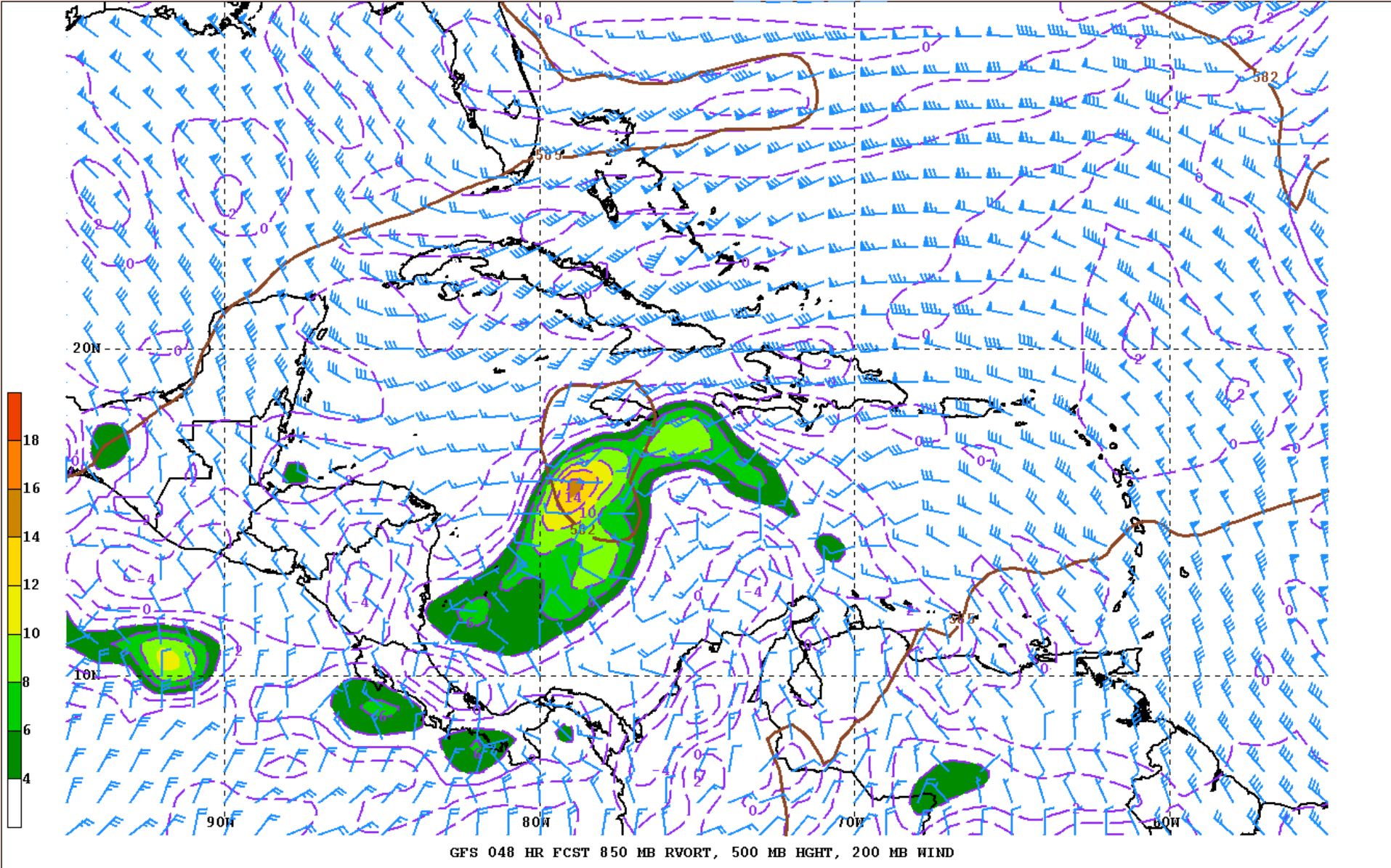


**Case 2**  
**GFS 00 h**



## Case 2

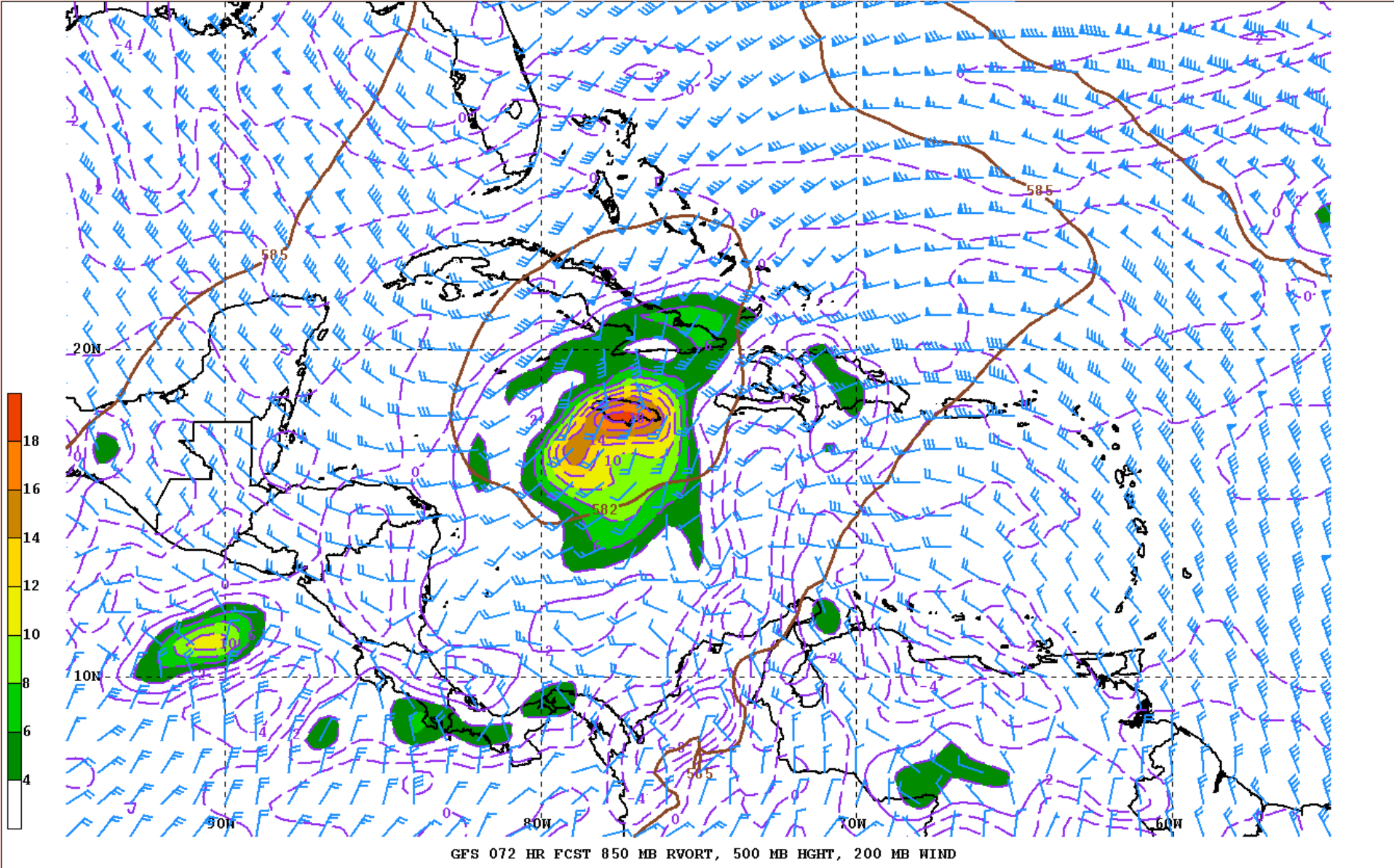
### GFS 24 h



## Case 2

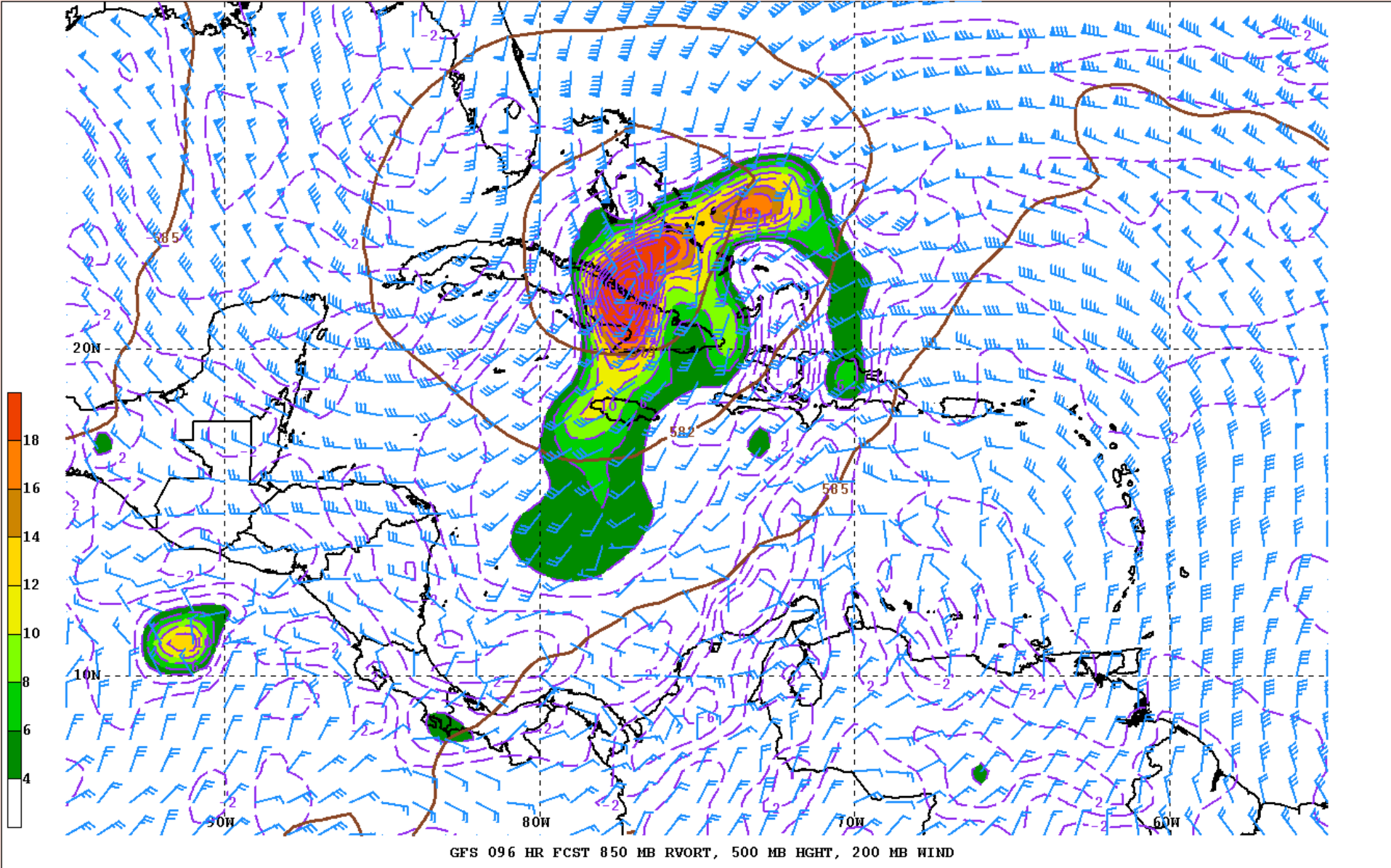
## GFS 48 h





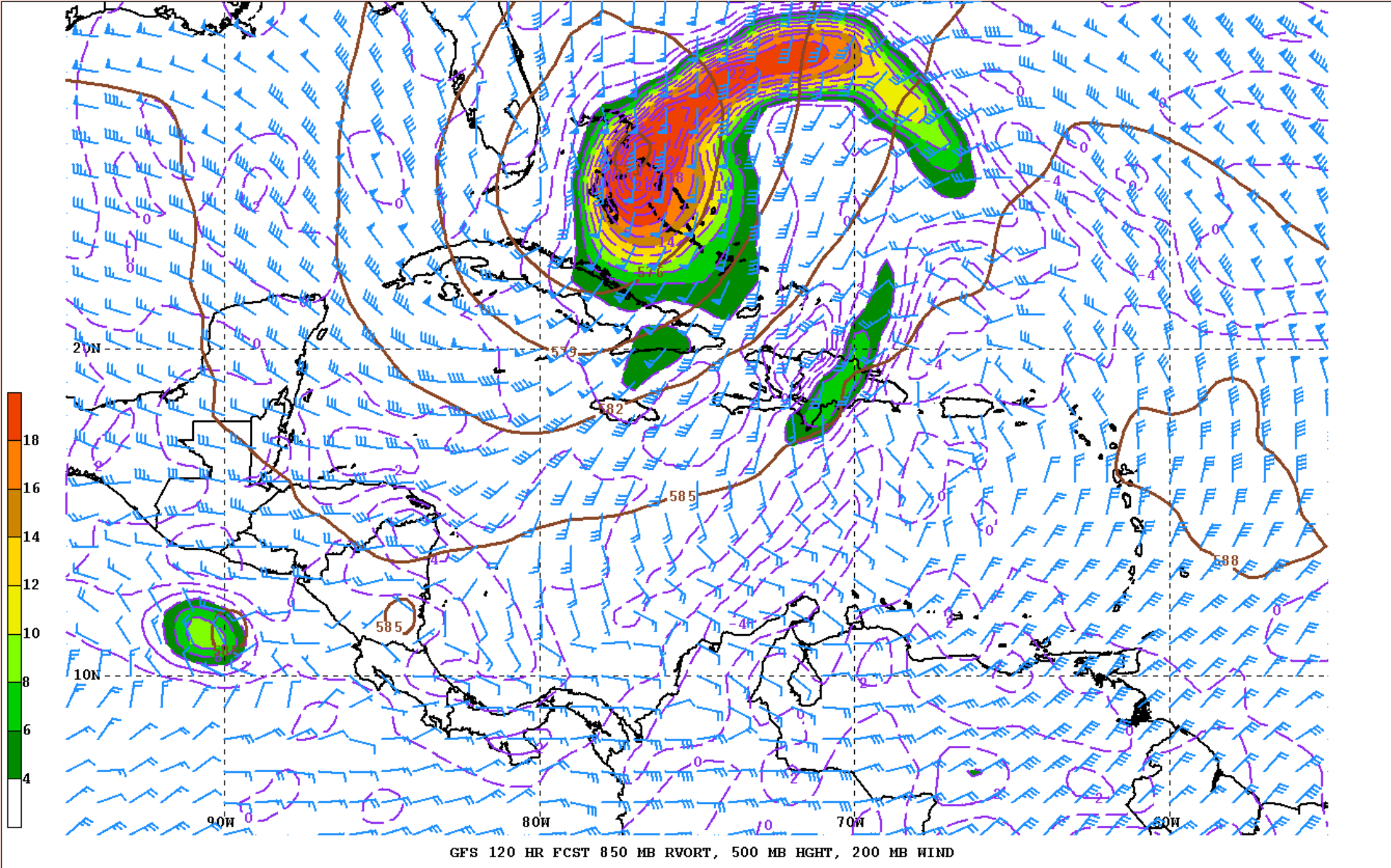
## Case 2

## GFS 72 h



## Case 2

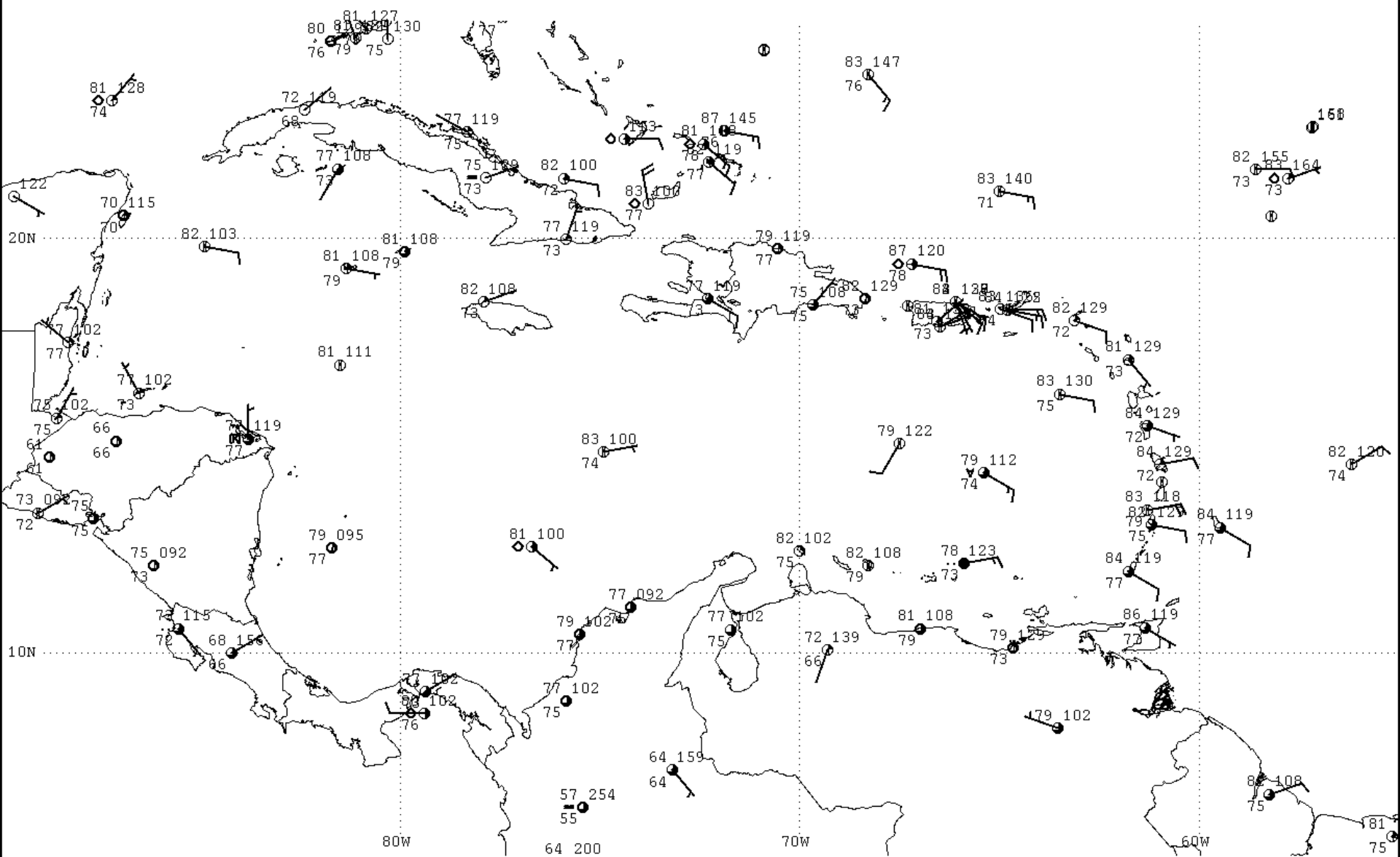
## GFS 96 h



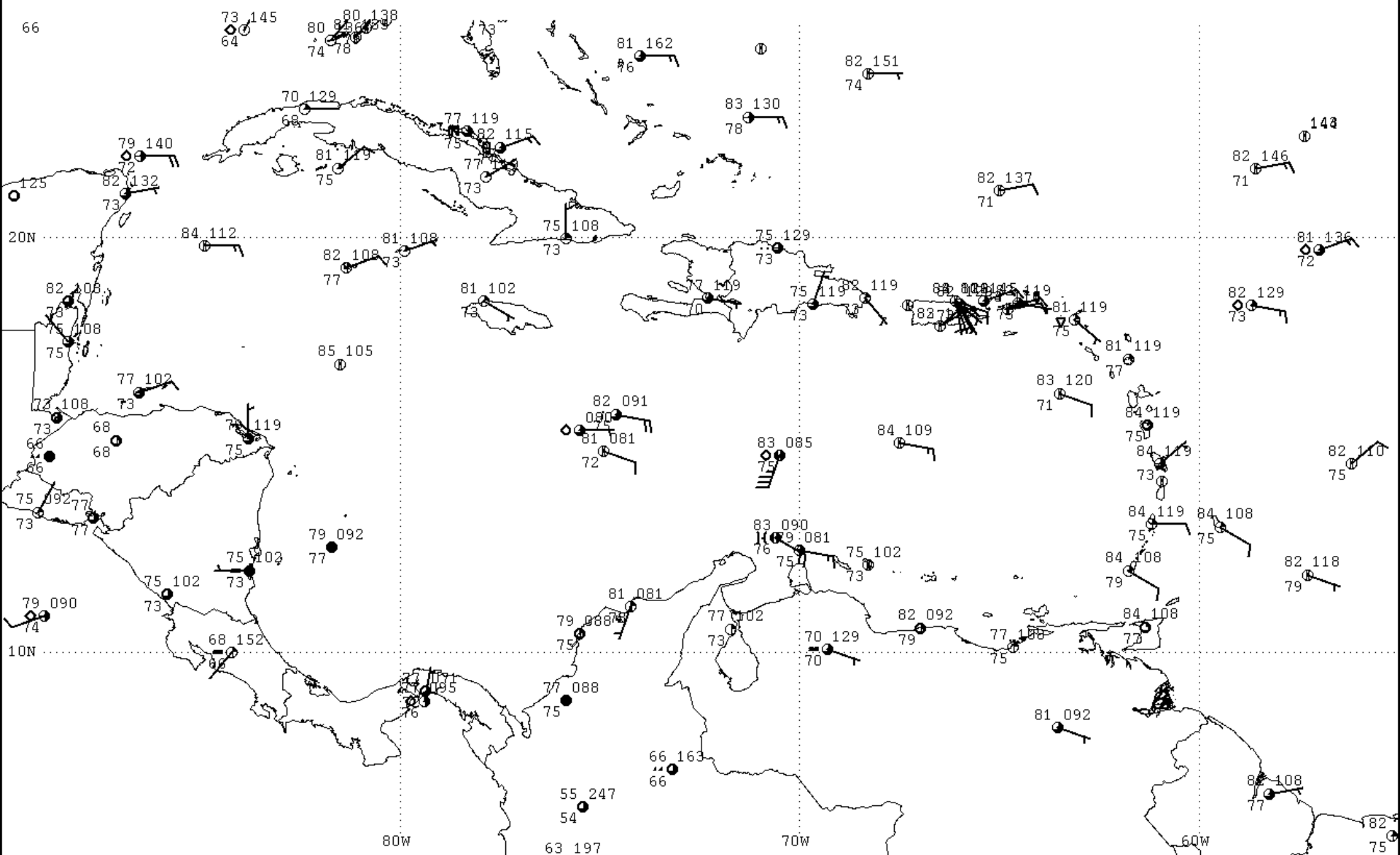
## Case 2

### GFS 120 h





Surface Observations Case 2 Time T-24 Hours



Surface Observations Case 2 Time T

**TROPICAL WEATHER OUTLOOK  
NWS NATIONAL HURRICANE CENTER MIAMI FL  
200 PM EDT WED SEP 16 2015**

**FOR THE NORTH ATLANTIC...CARIBBEAN SEA AND THE GULF OF MEXICO...**

**...enter some discussion of the disturbance associated with Case 2 below...**

**...now enter the categories and percentage chances of development below...**

**THIS SYSTEM HAS A \_\_\_\_\_ CHANCE...\_\_\_\_\_ PERCENT...OF BECOMING A  
TROPICAL CYCLONE DURING THE NEXT 48 HOURS...AND A \_\_\_\_\_ CHANCE...\_\_\_\_\_  
PERCENT...OF BECOMING A TROPICAL CYCLONE DURING THE NEXT 5 DAYS.**