

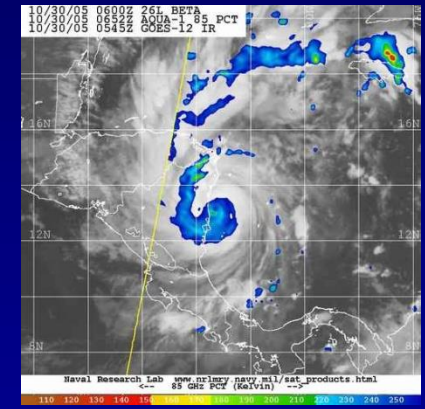
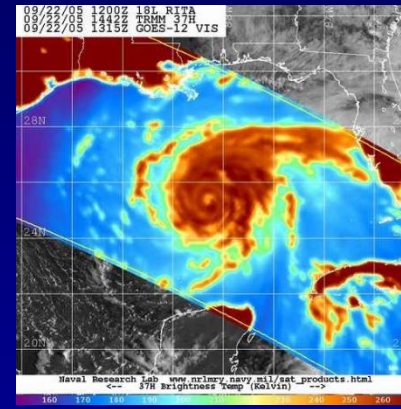
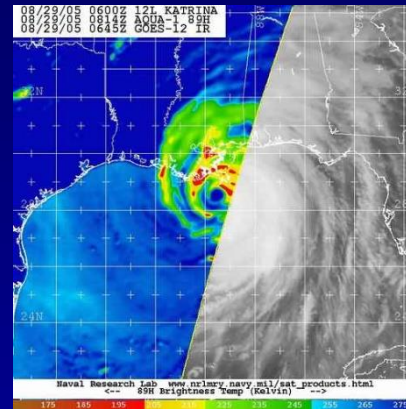
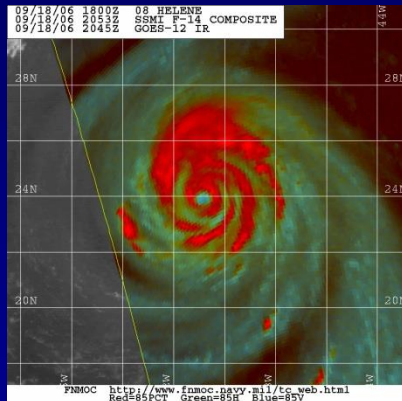


# NATIONAL HURRICANE CENTER



Miami, Florida

## Microwave imagery Exercise



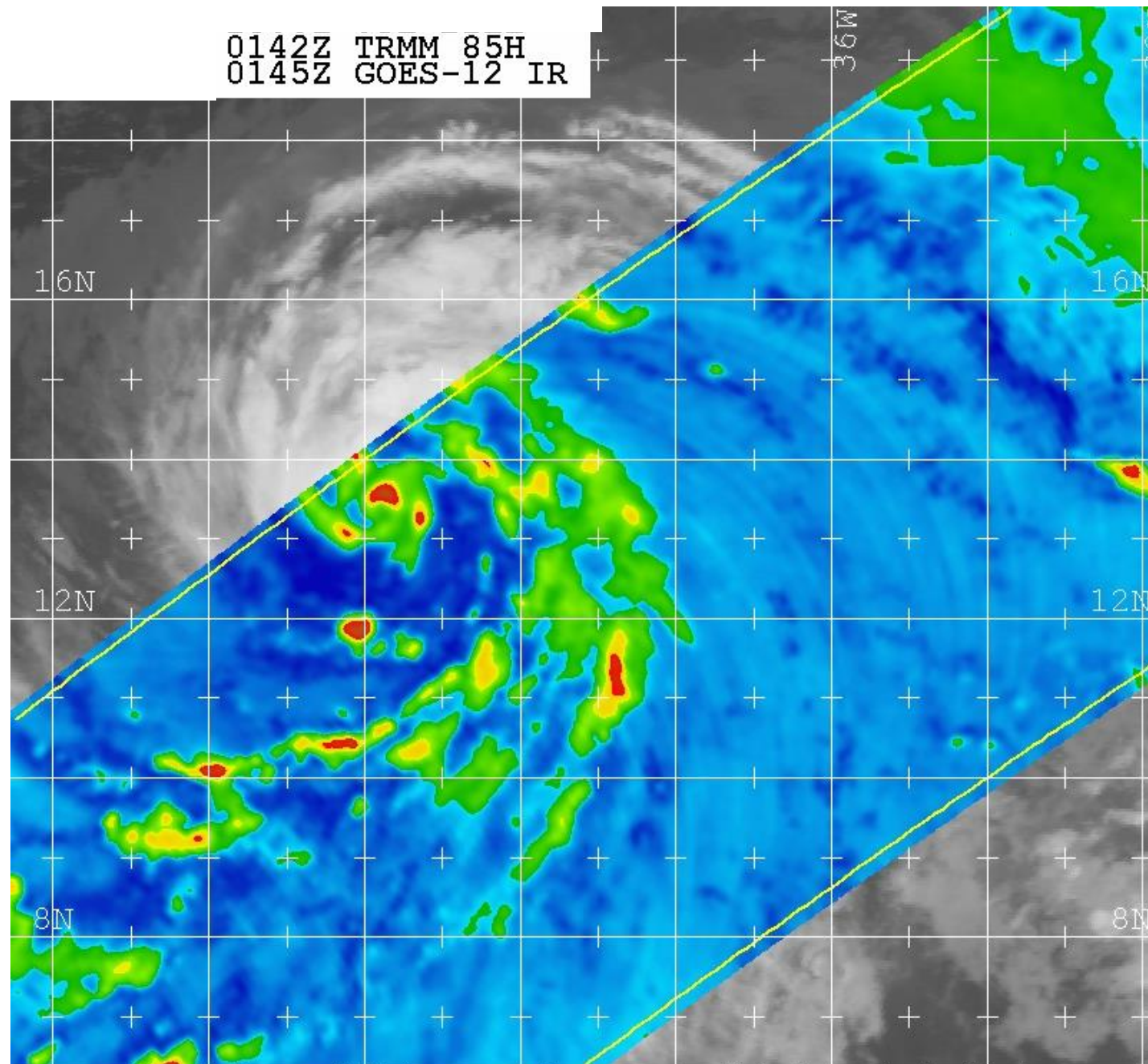
John Cangialosi and Brad Reinhart

Data assistance Tom Lee & Jeff Hawkins (NRL)

National Hurricane Center, Miami, FL

0142Z TRMM 85H  
0145Z GOES-12 IR

## Exercise 1



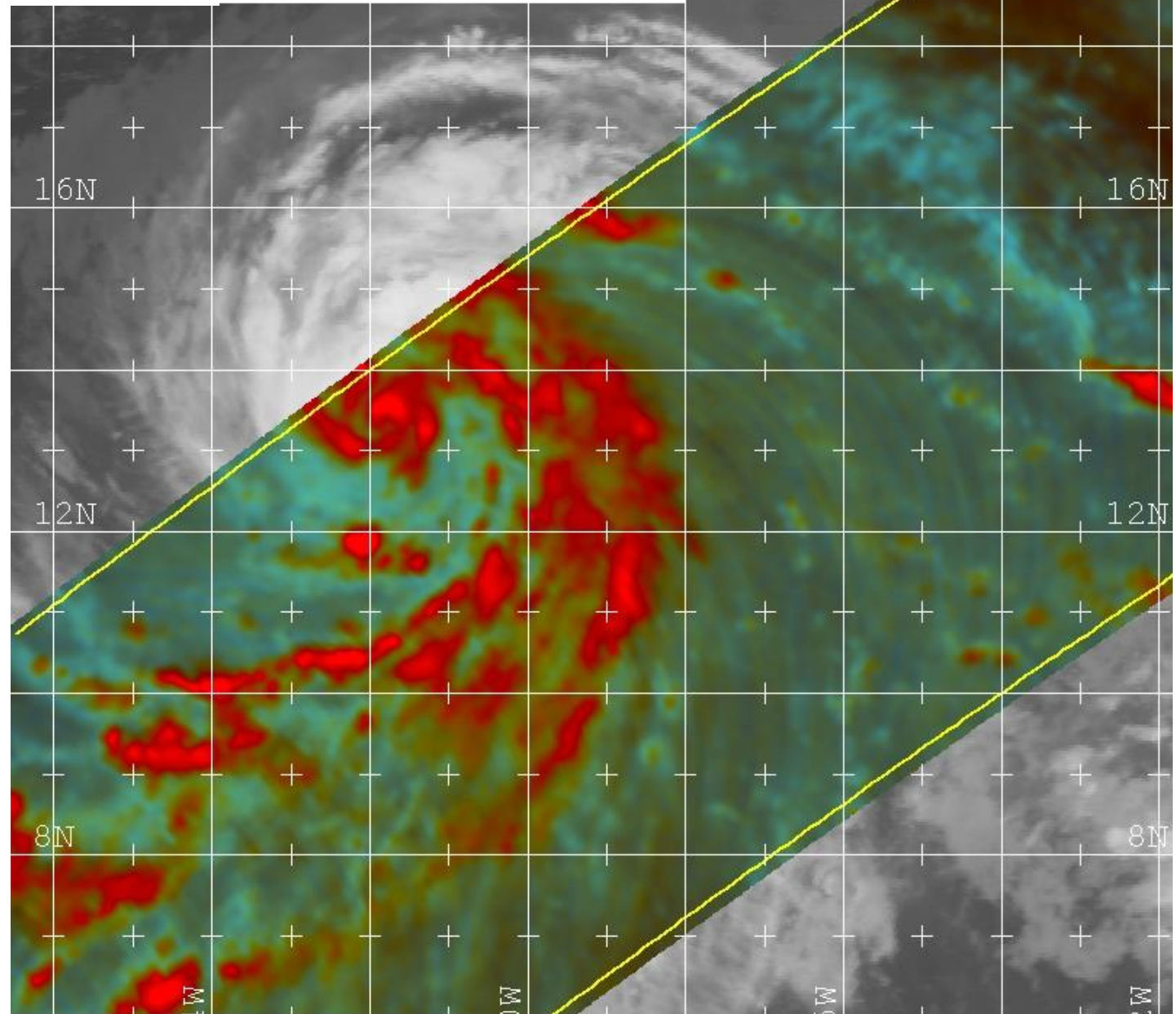
Naval Research Lab [www.nrlmry.navy.mil/sat\\_products.html](http://www.nrlmry.navy.mil/sat_products.html)  
<-- 85H Brightness Temp (Kelvin) -->

190 200 210 220 230 240 250 260 270



0142Z TRMM COMPOSITE  
0145Z GOES-12 IR

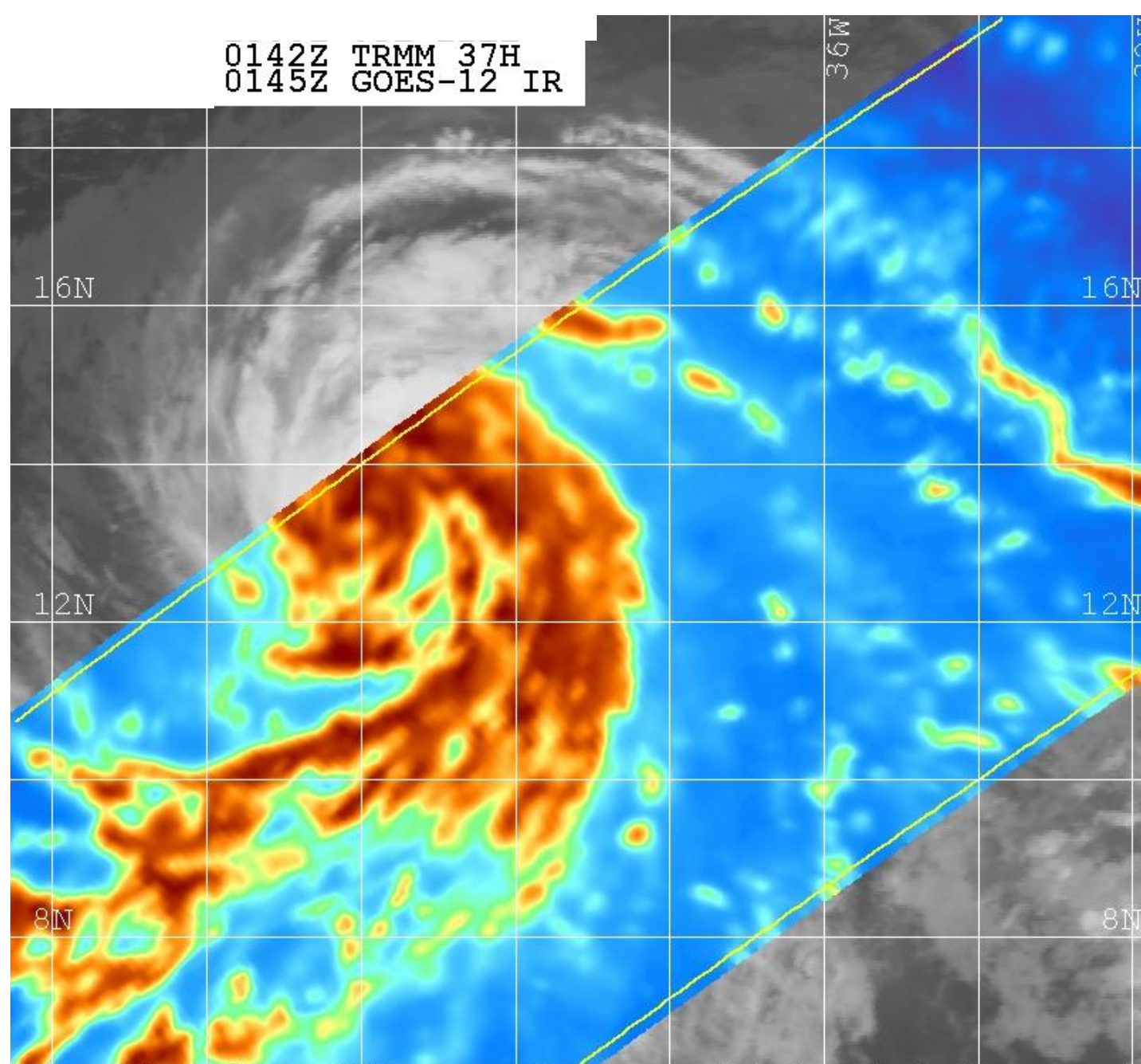
## Exercise 1



Naval Research Lab [www.nrlmry.navy.mil/sat\\_products.html](http://www.nrlmry.navy.mil/sat_products.html)  
Red=85PCT Green=85H Blue=85V

0142Z TRMM 37H  
0145Z GOES-12 IR

## Exercise 1



Naval Research Lab [www.nrlmry.navy.mil/sat\\_products.html](http://www.nrlmry.navy.mil/sat_products.html)  
<-- 37H Brightness Temp (Kelvin) -->

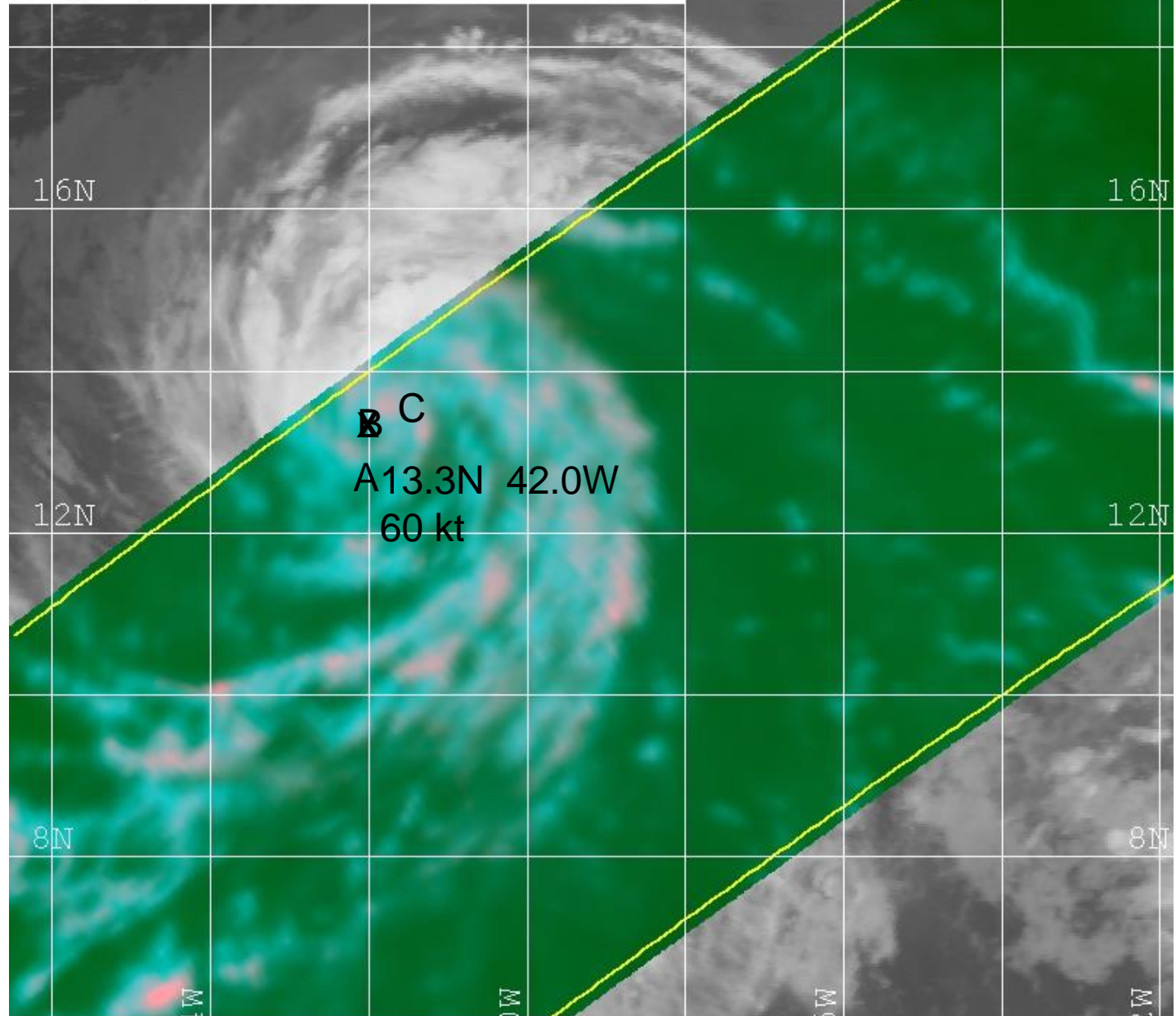
160 170 180 190 200 210 220 230 240 250 260



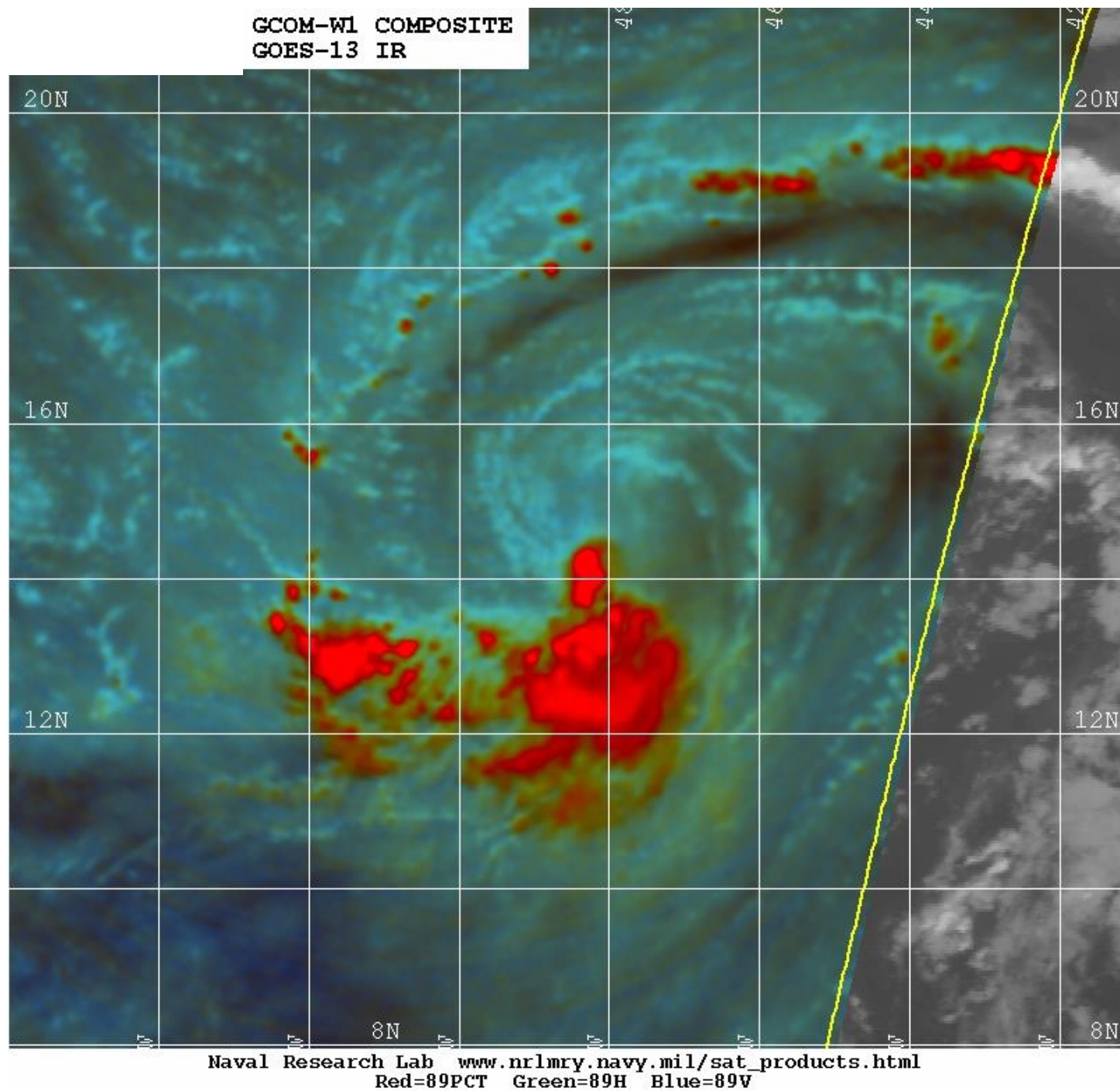
08/16/09 1800Z 03L BILL  
08/17/09 0142Z TRMM COMPOSITE  
08/17/09 0145Z GOES-12 IR

## Exercise 1

# B



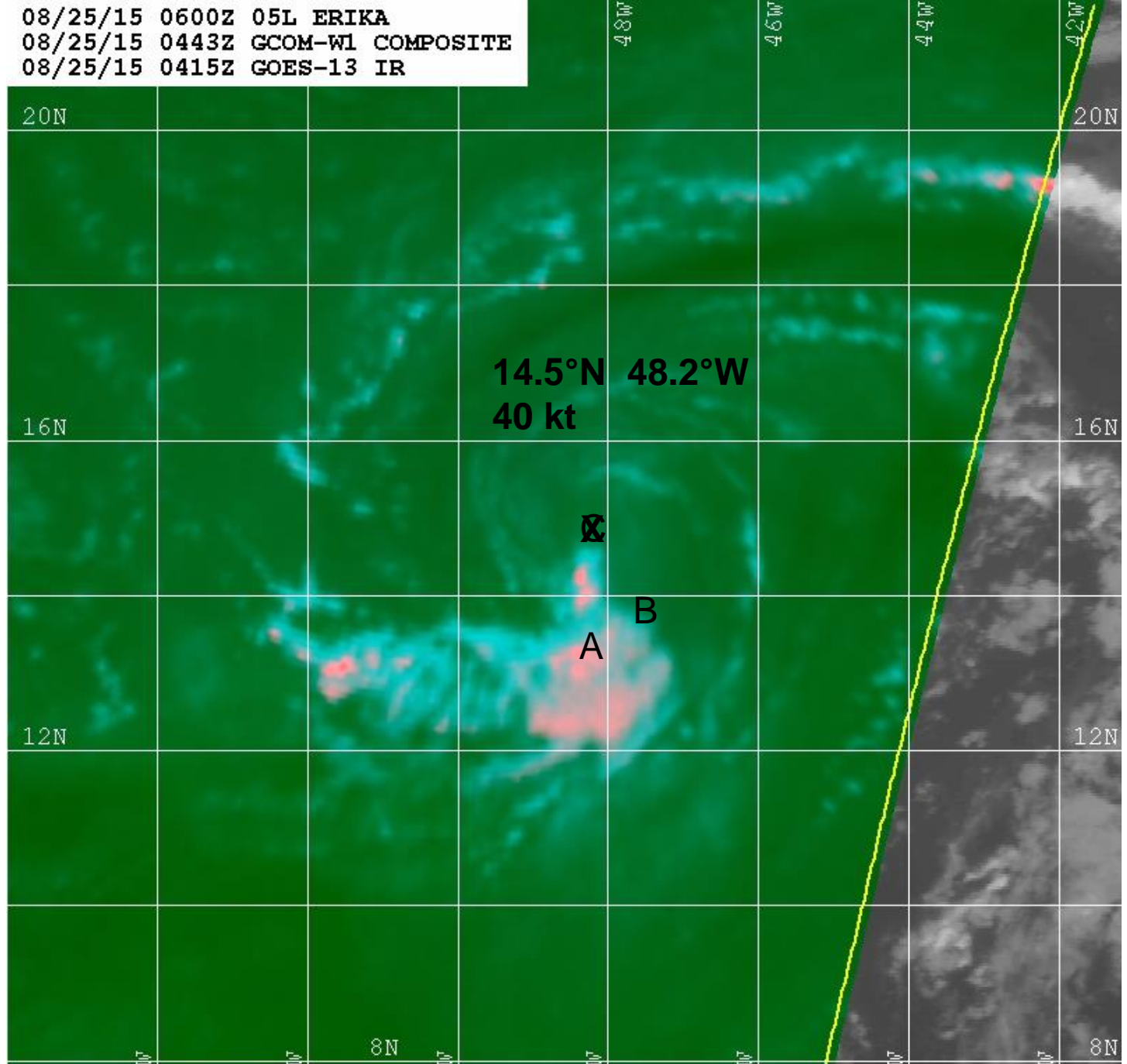
## Exercise 2



08/25/15 0600Z 05L ERIKA  
08/25/15 0443Z GCOM-W1 COMPOSITE  
08/25/15 0415Z GOES-13 IR

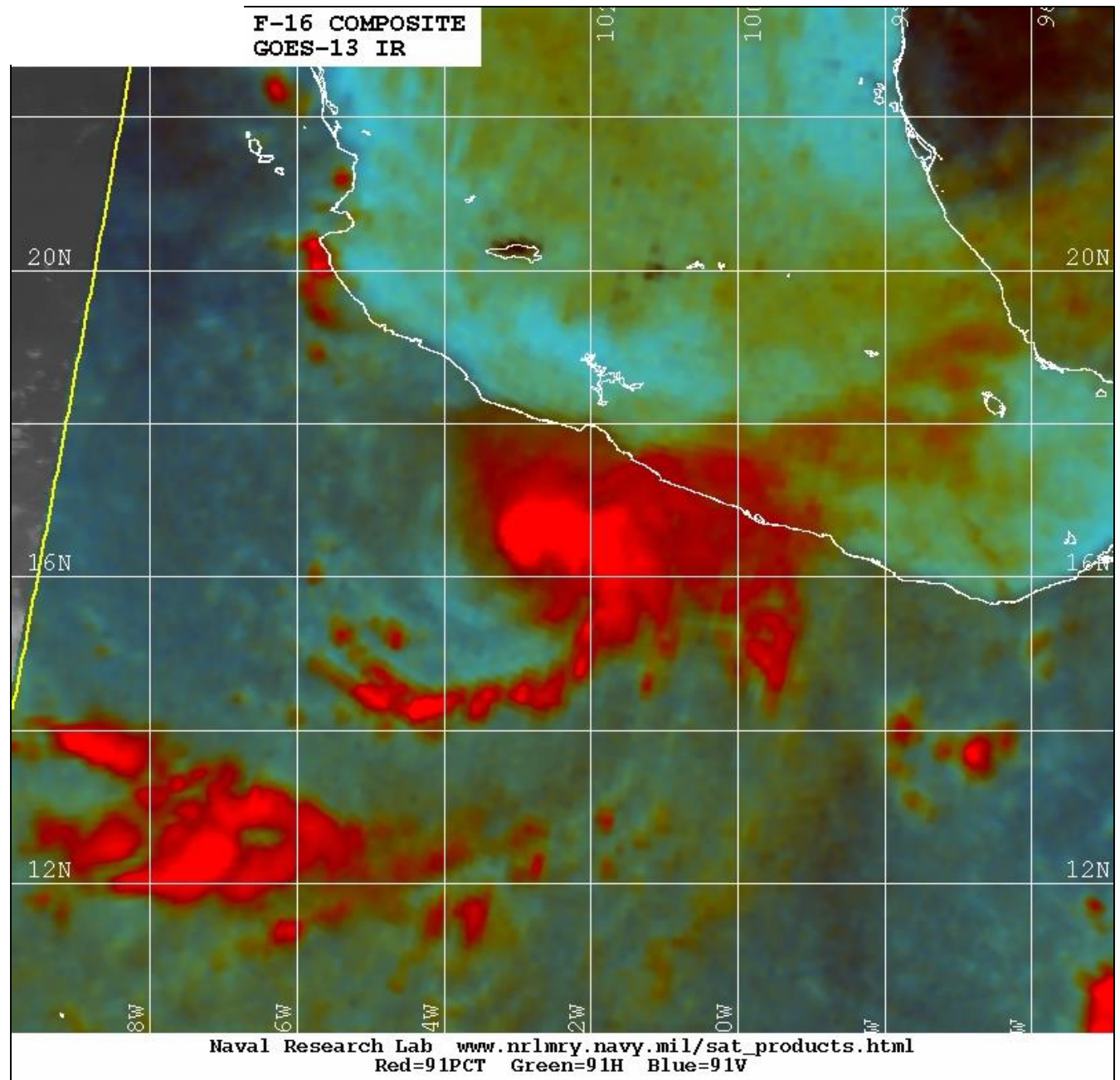
## Exercise 2

# C





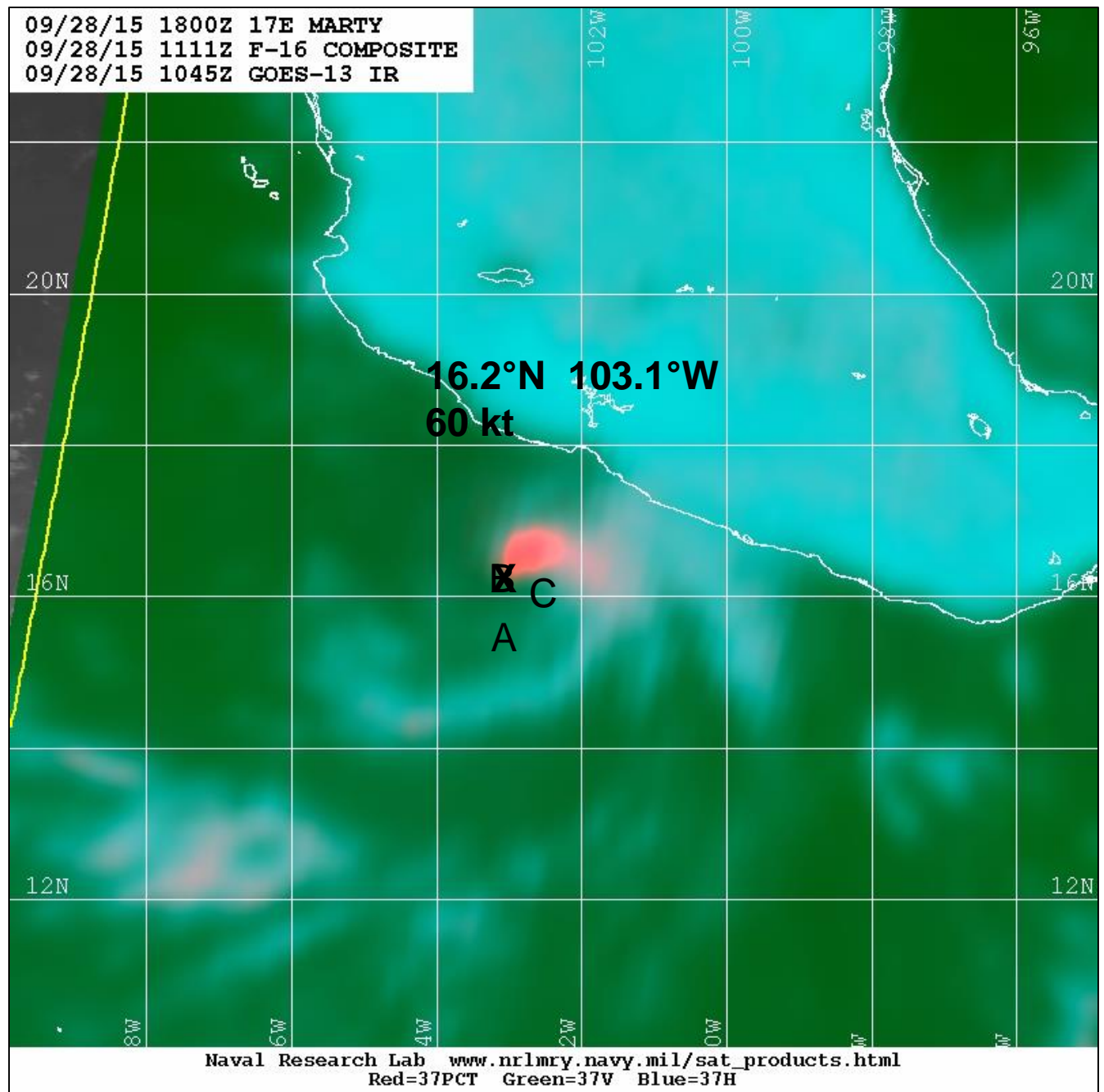
## Exercise 3



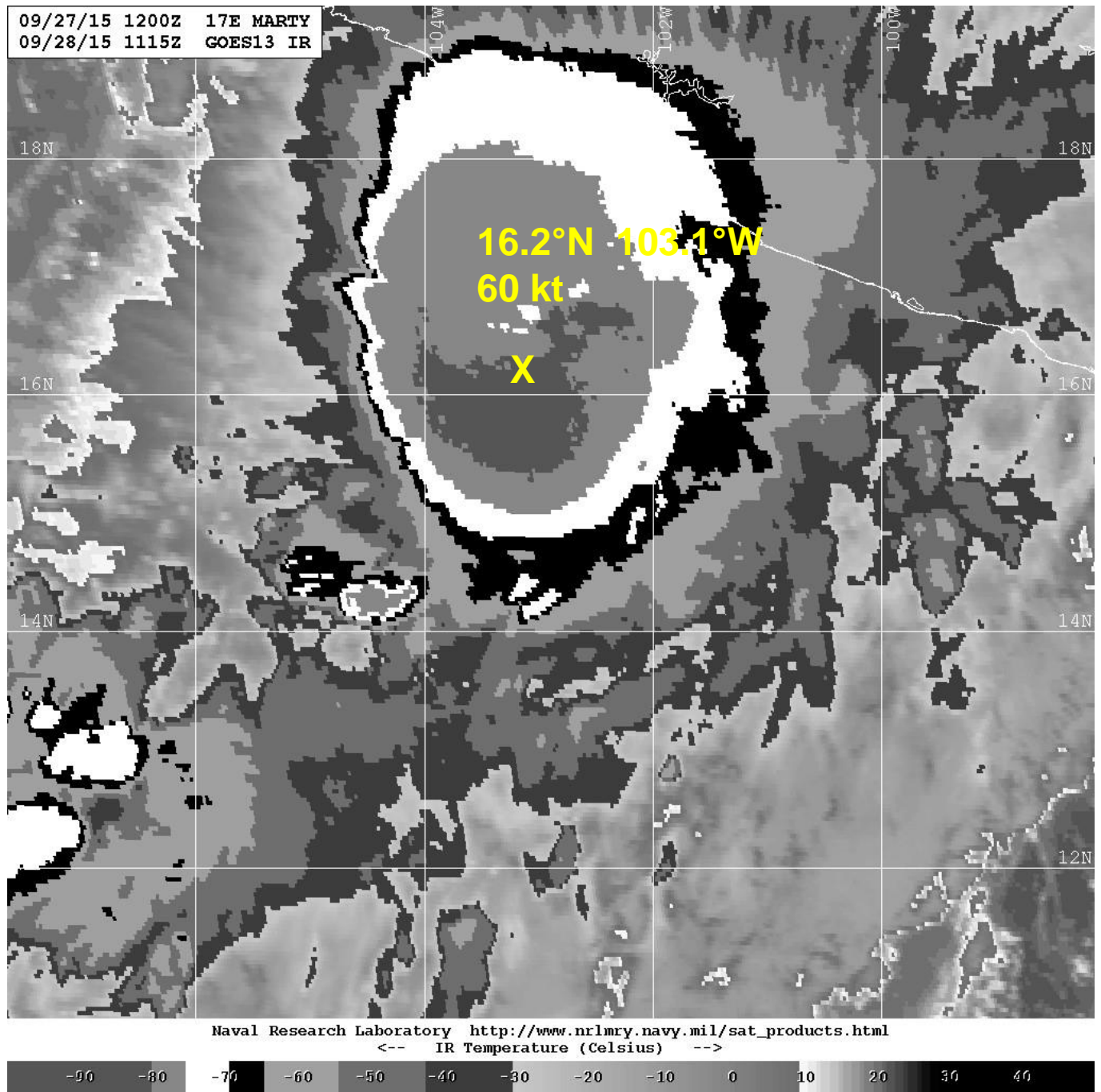


### Exercise 3

B

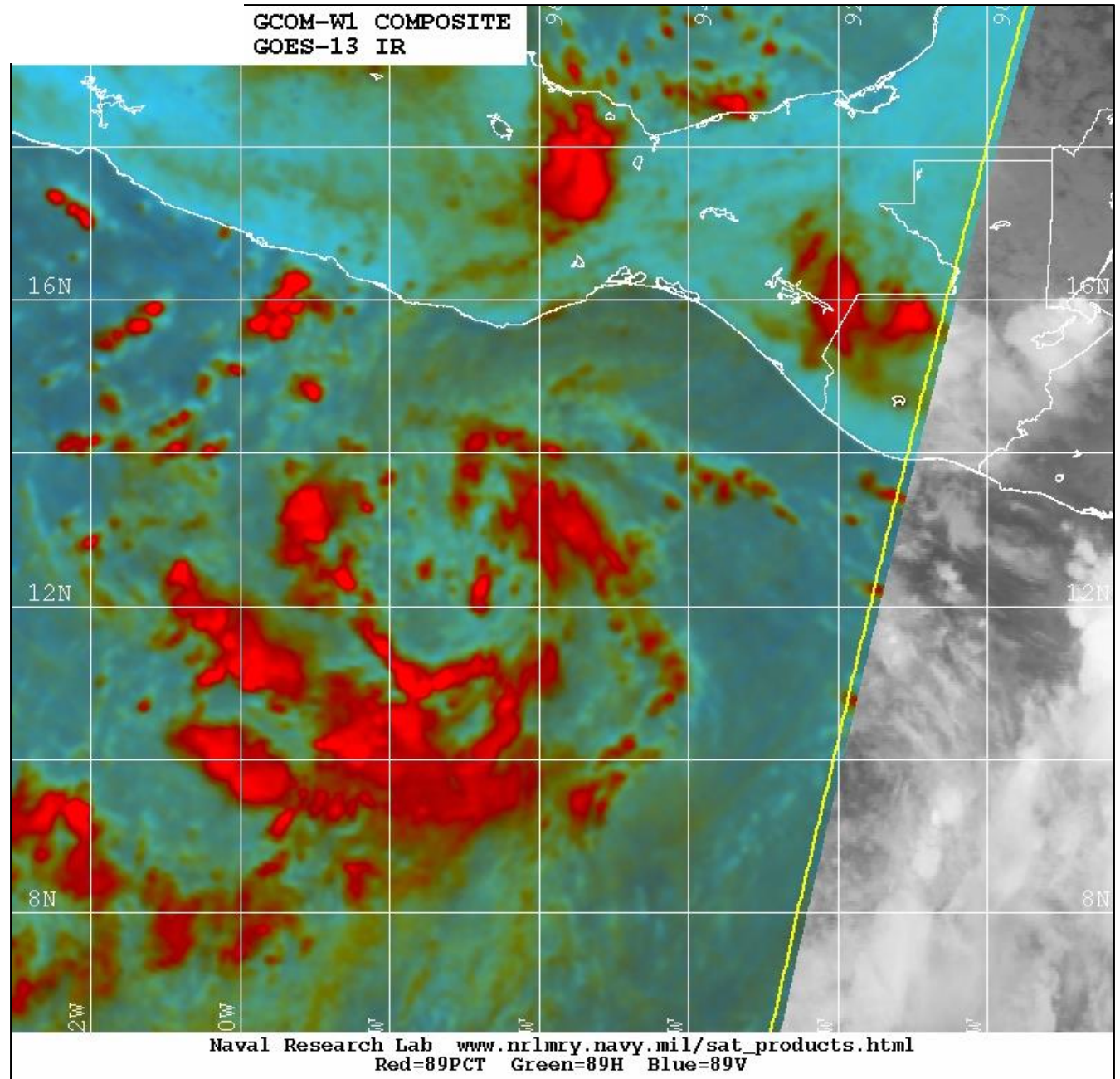


## Exercise 3



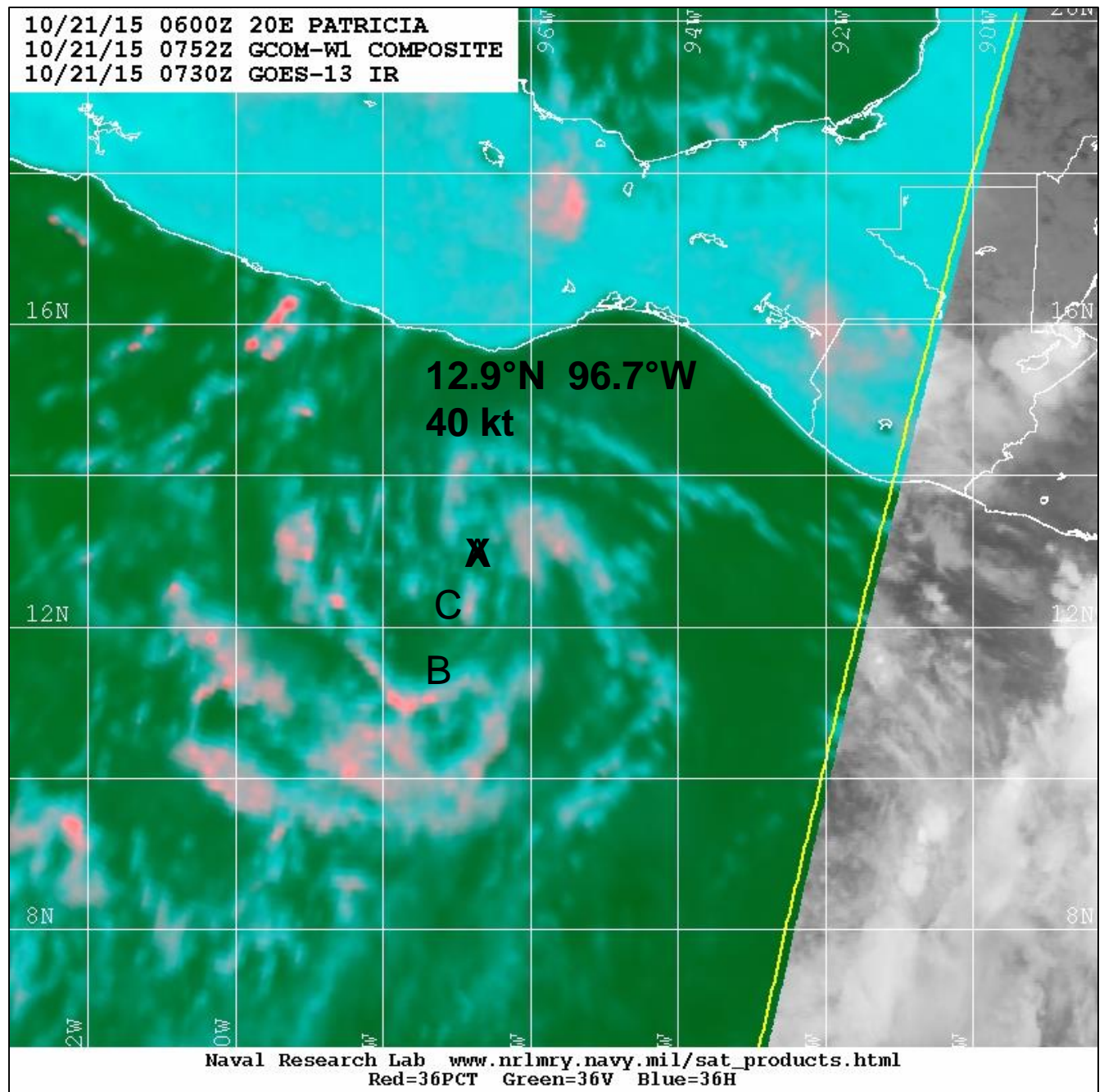


## Exercise 4



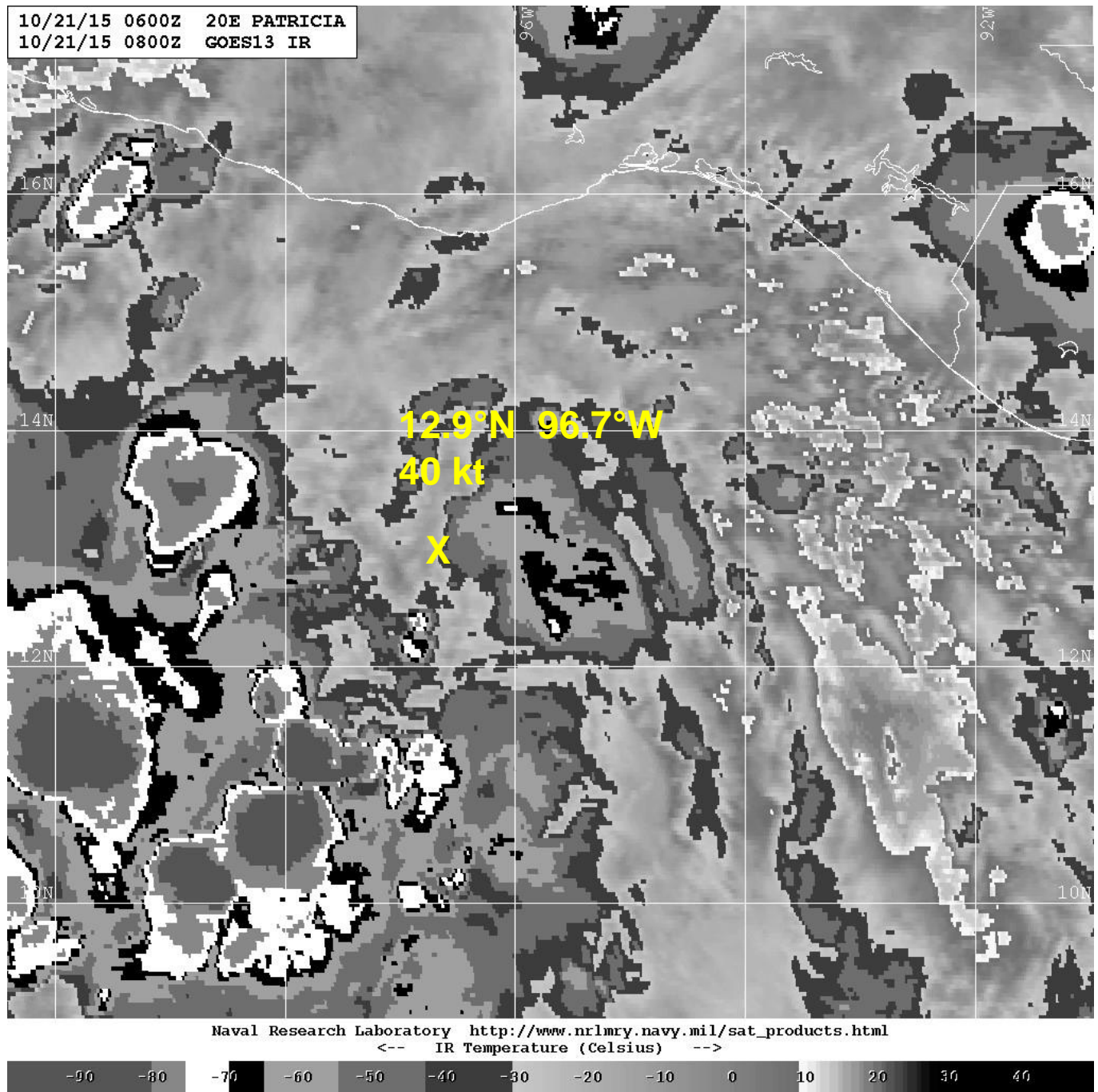
## Exercise 4

# A

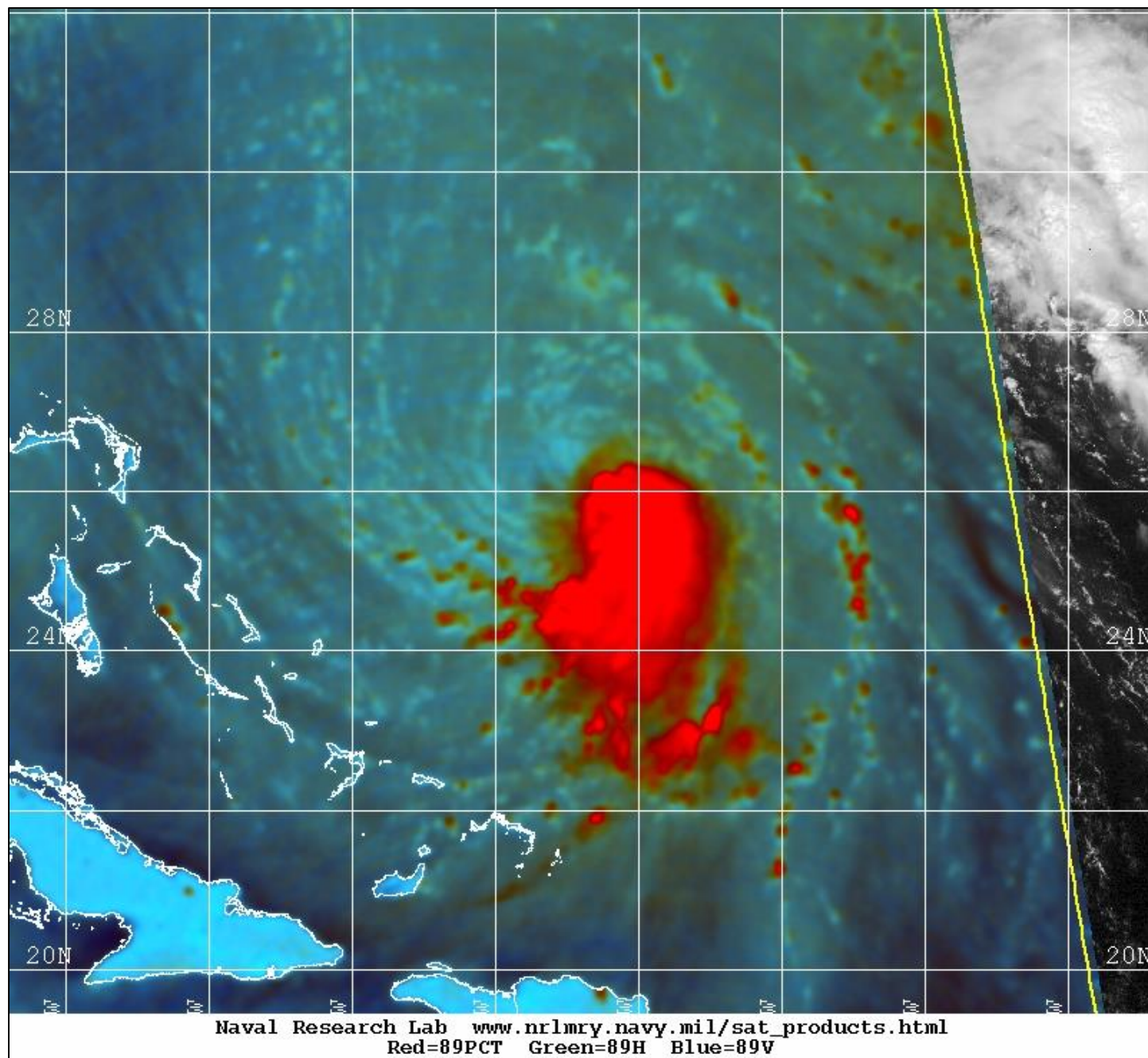




## Exercise 4



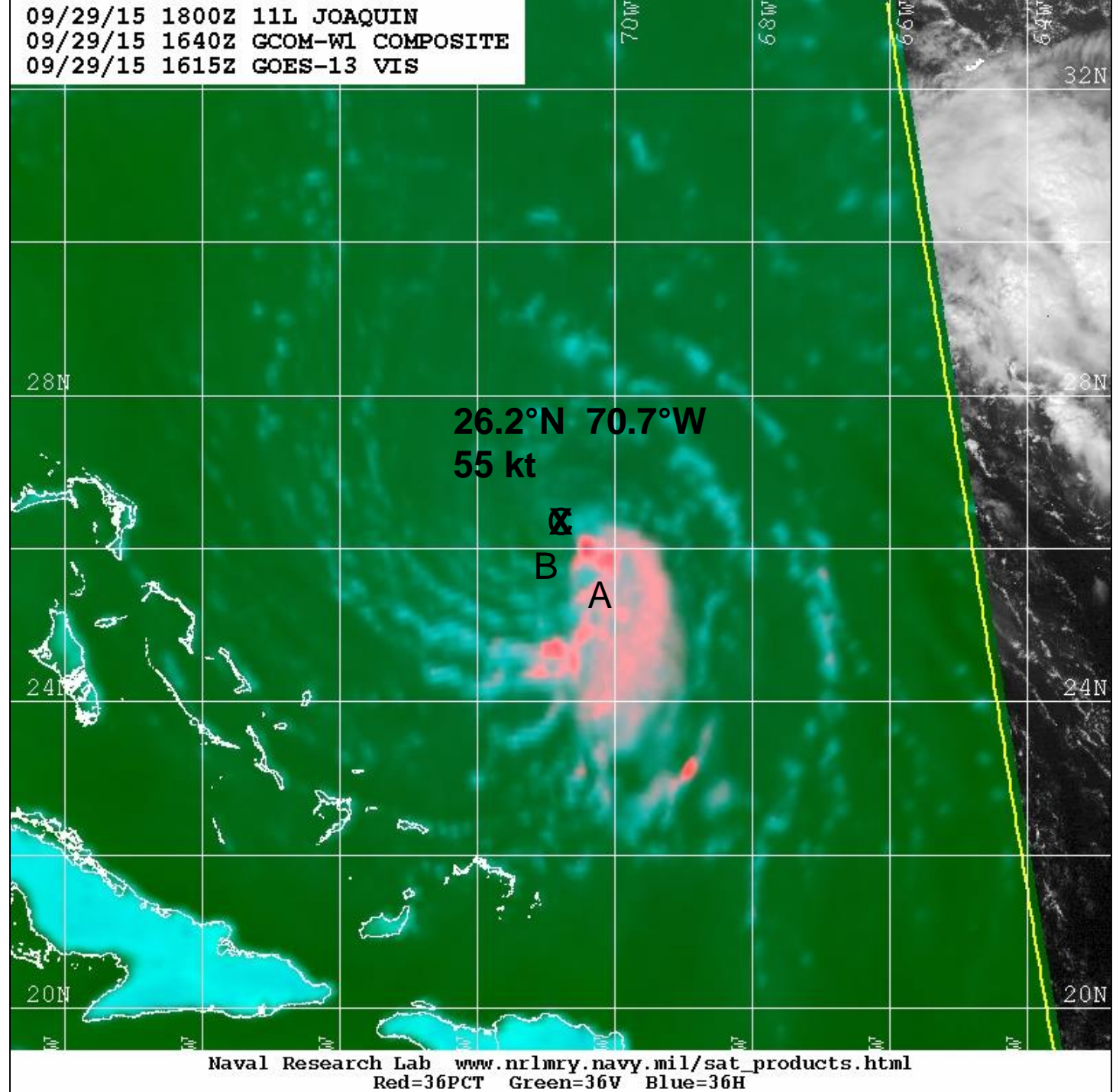
## Exercise 5



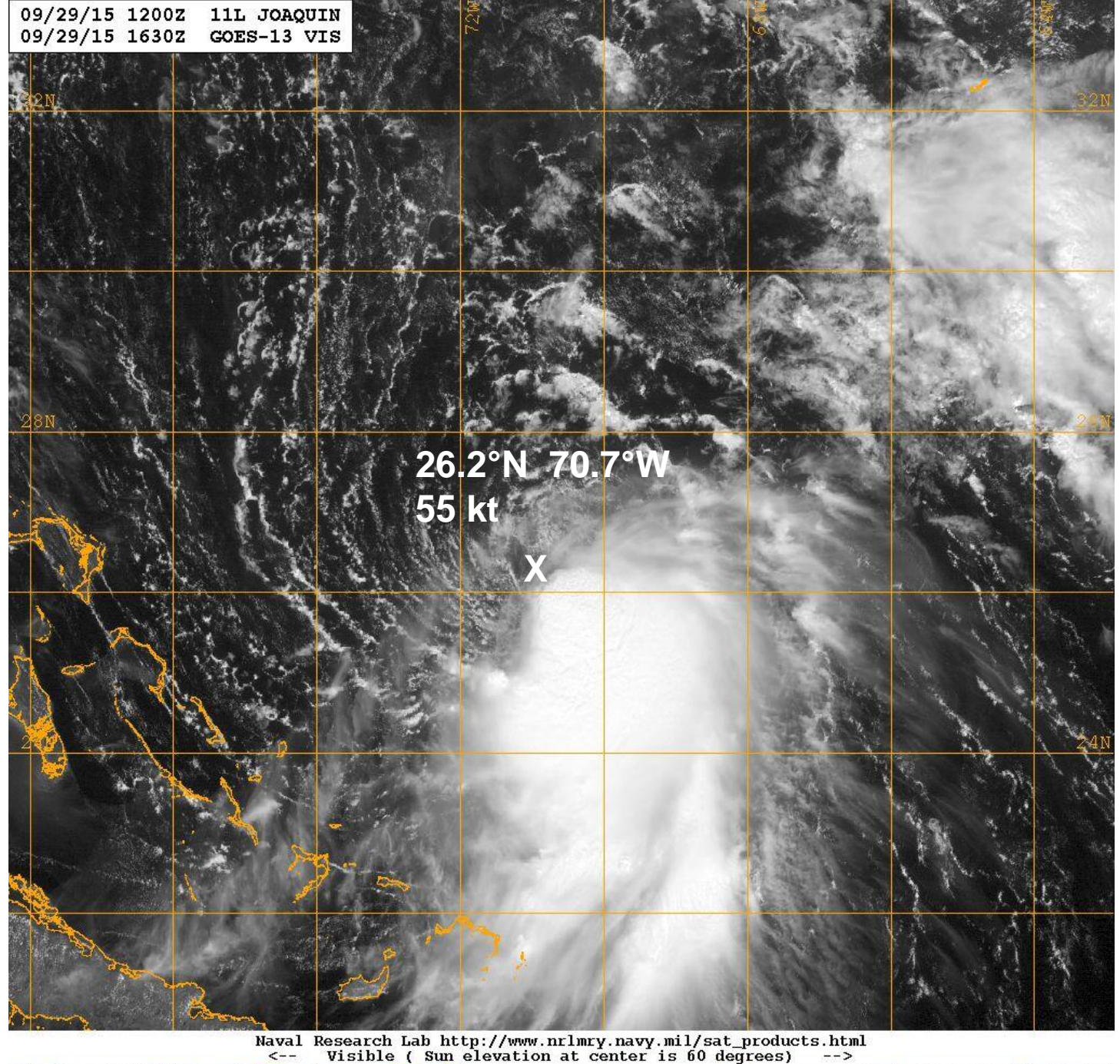


## Exercise 5

# C

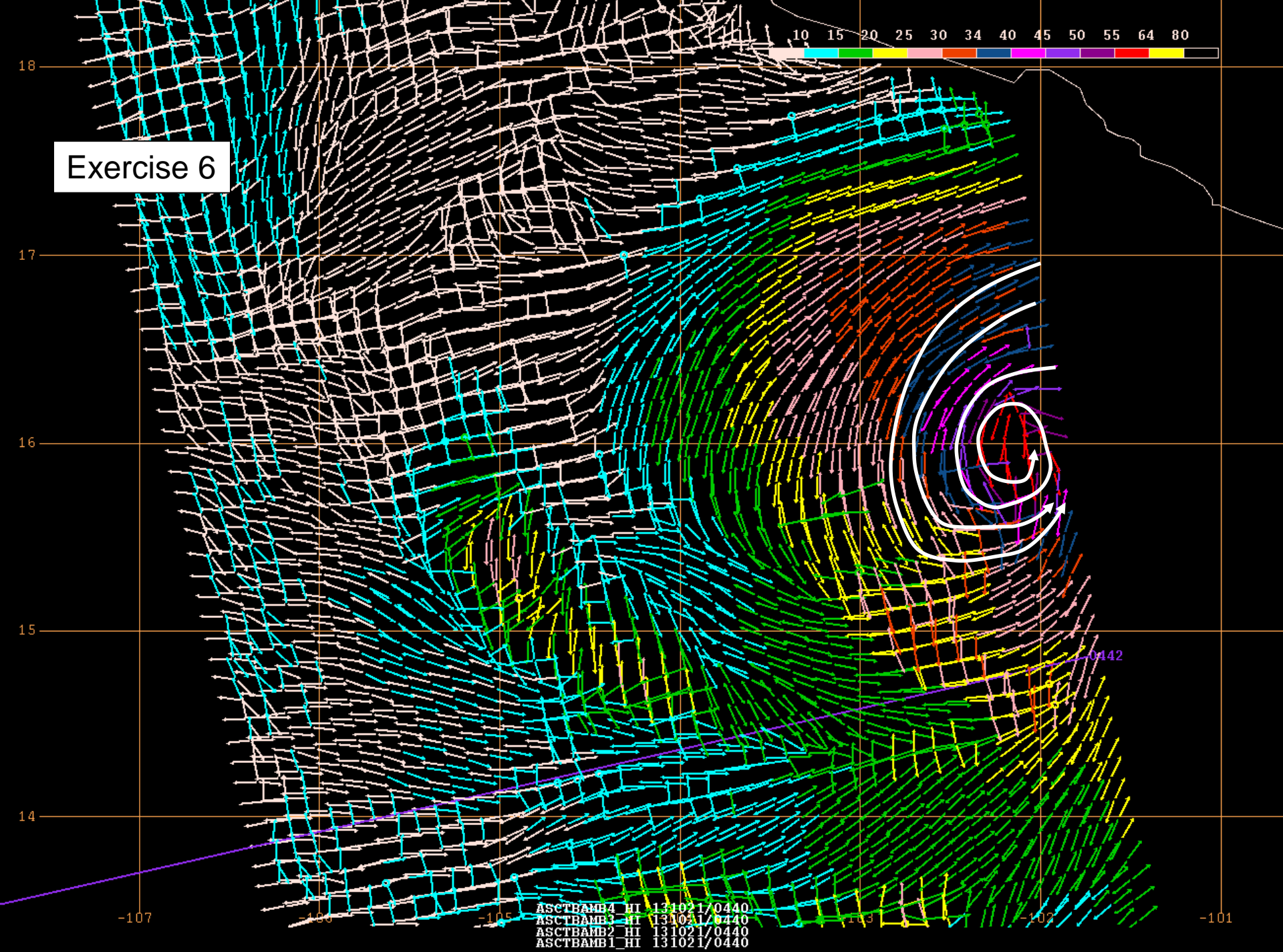


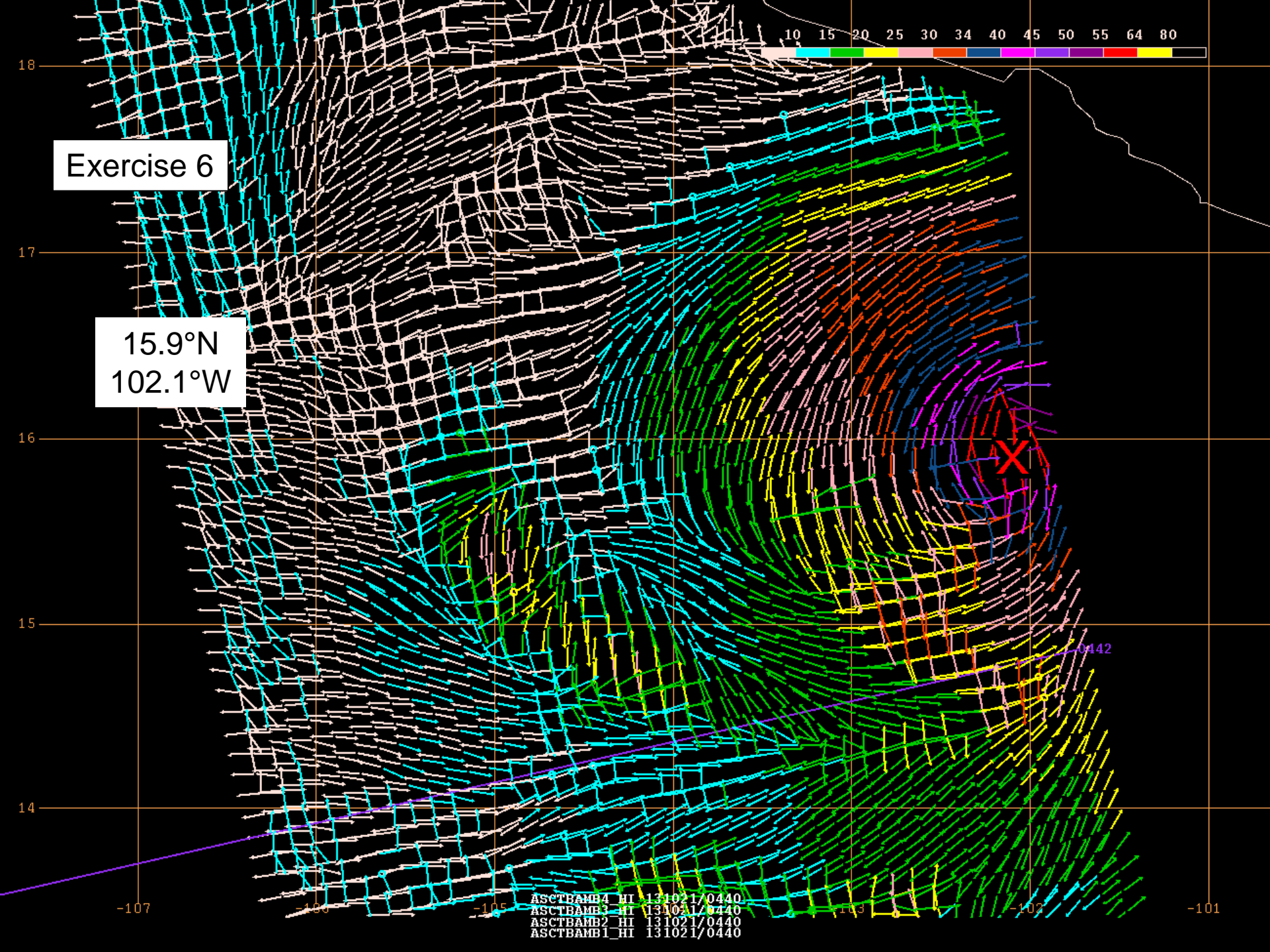
## Exercise 5





## Exercise 6





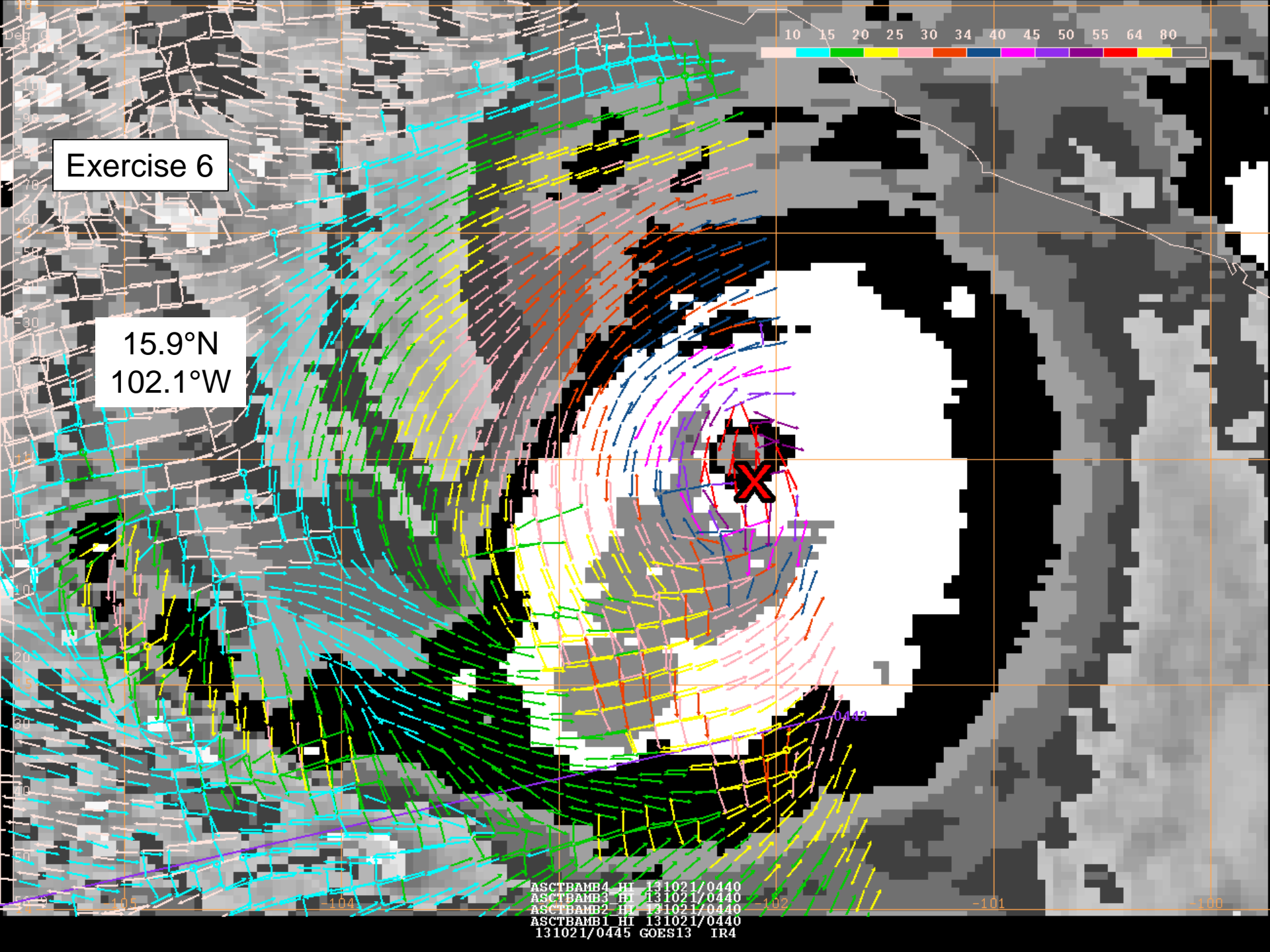


# Exercise 6

15.9°N  
102.1°W

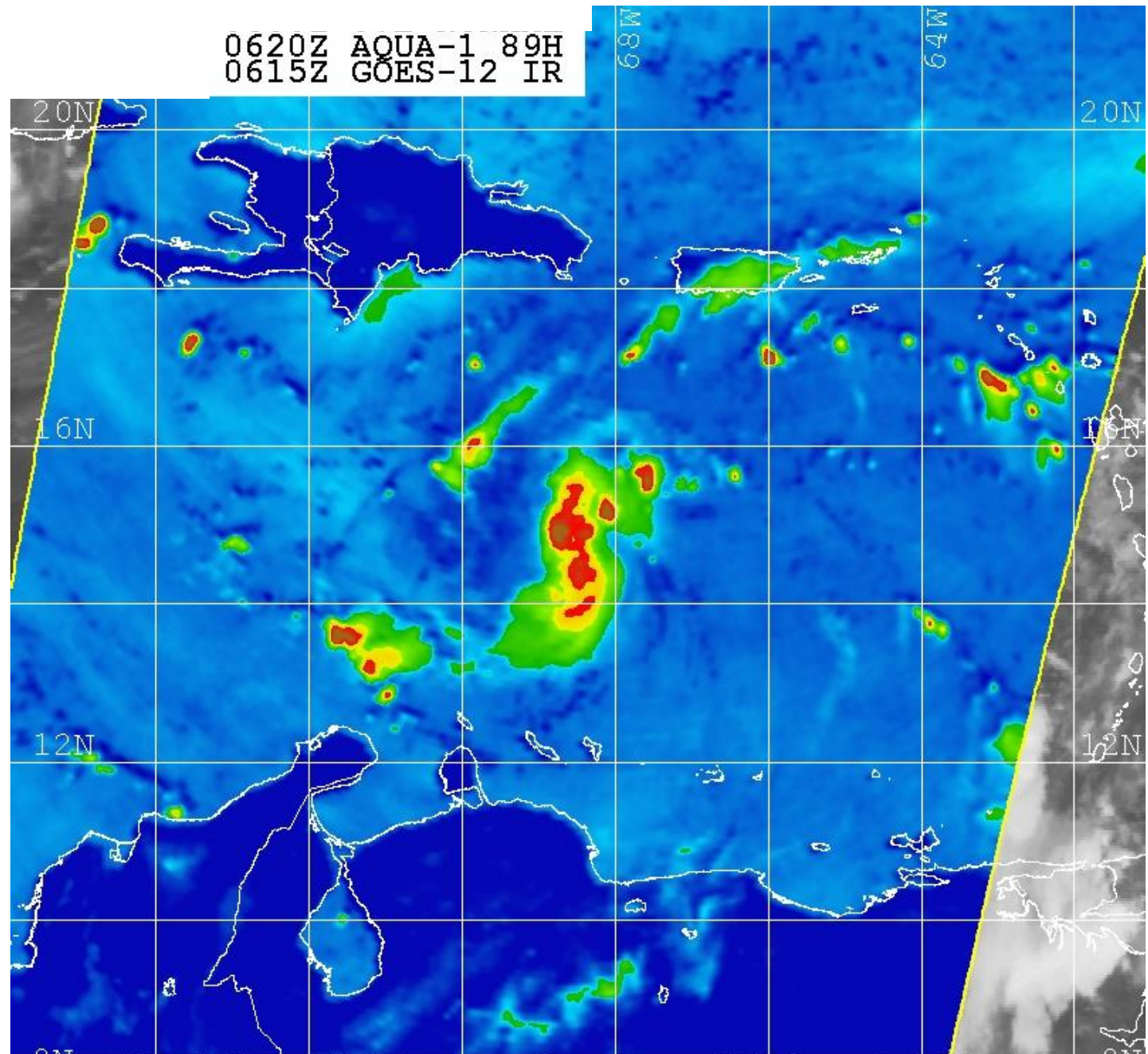
10 15 20 25 30 34 40 45 50 55 64 80

ASCTBAMB4 HI 131021/0440  
ASCTBAMB3 HI 131021/0440  
ASCTBAMB2 HI 131021/0440  
ASCTBAMB1 HI 131021/0440  
131021/0445 GOES13 IR4



0620Z AQUA-1 89H  
0615Z GOES-12 IR

## Exercise 7



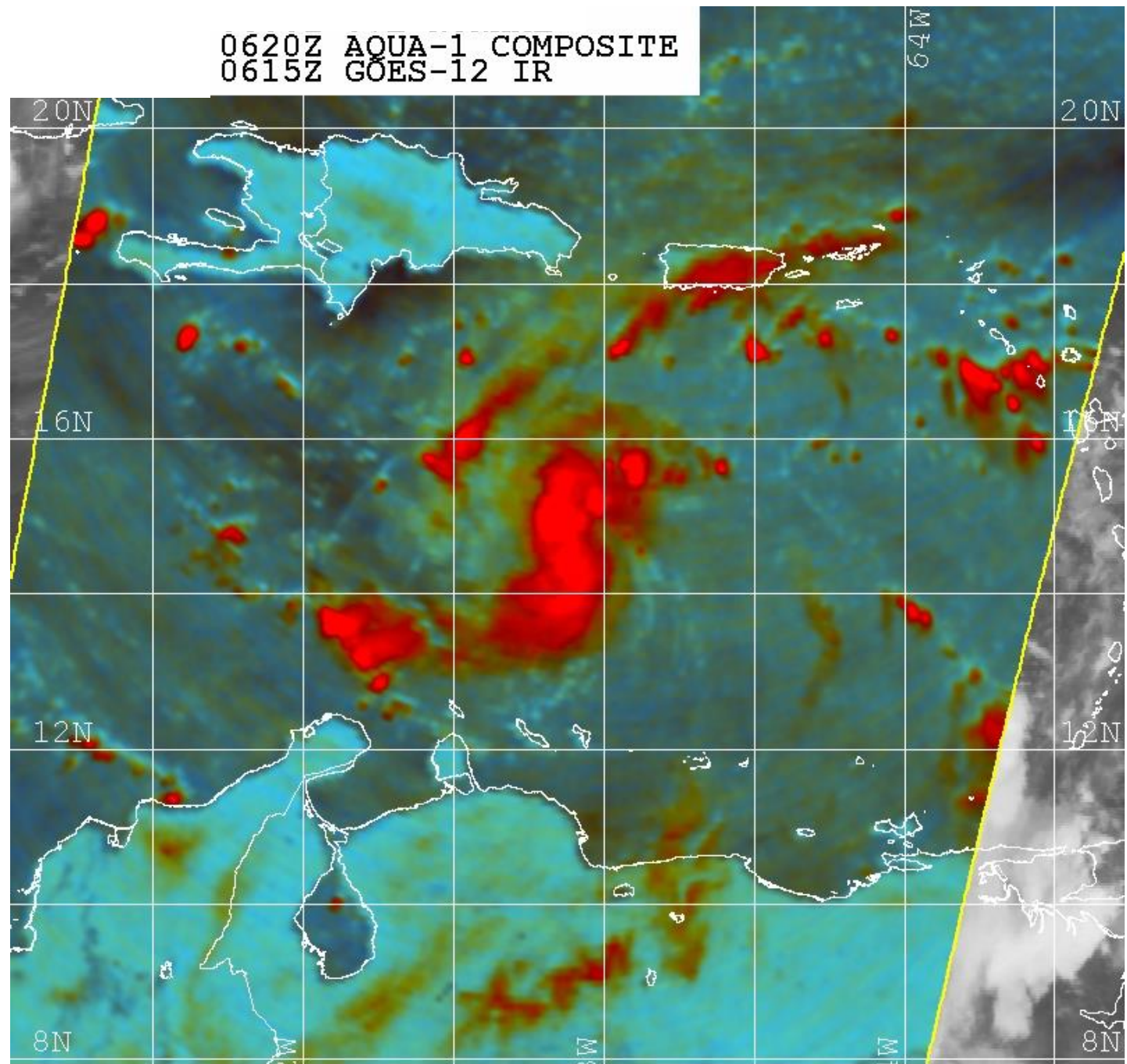
Naval Research Lab [www.nrlmry.navy.mil/sat\\_products.html](http://www.nrlmry.navy.mil/sat_products.html)  
<-- 89H Brightness Temp (Kelvin) -->





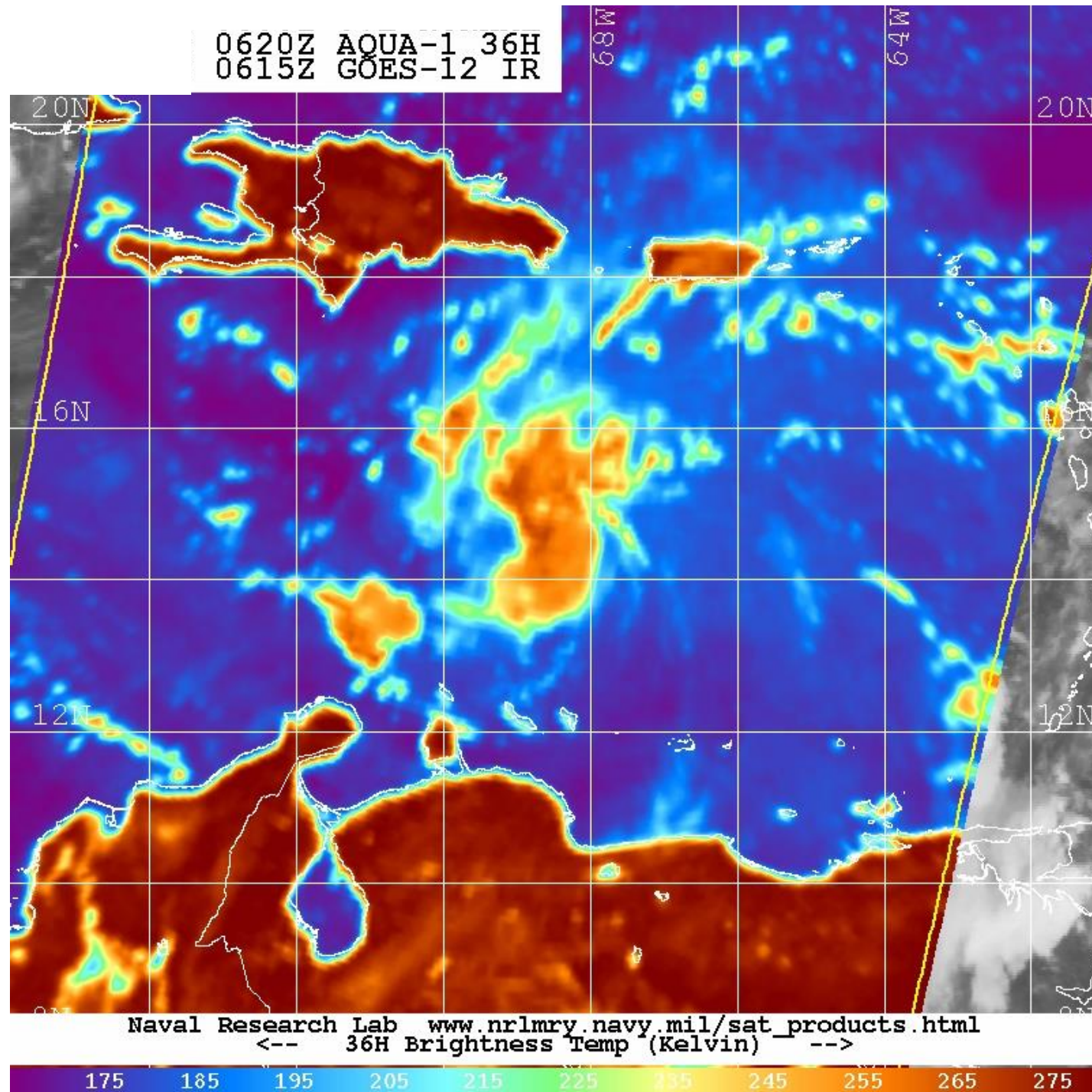
0620Z AQUA-1 COMPOSITE  
0615Z GOES-12 IR

## Exercise 7



Naval Research Lab [www.nrlmry.navy.mil/sat\\_products.html](http://www.nrlmry.navy.mil/sat_products.html)  
Red=89PCT Green=89H Blue=89V

## Exercise 7

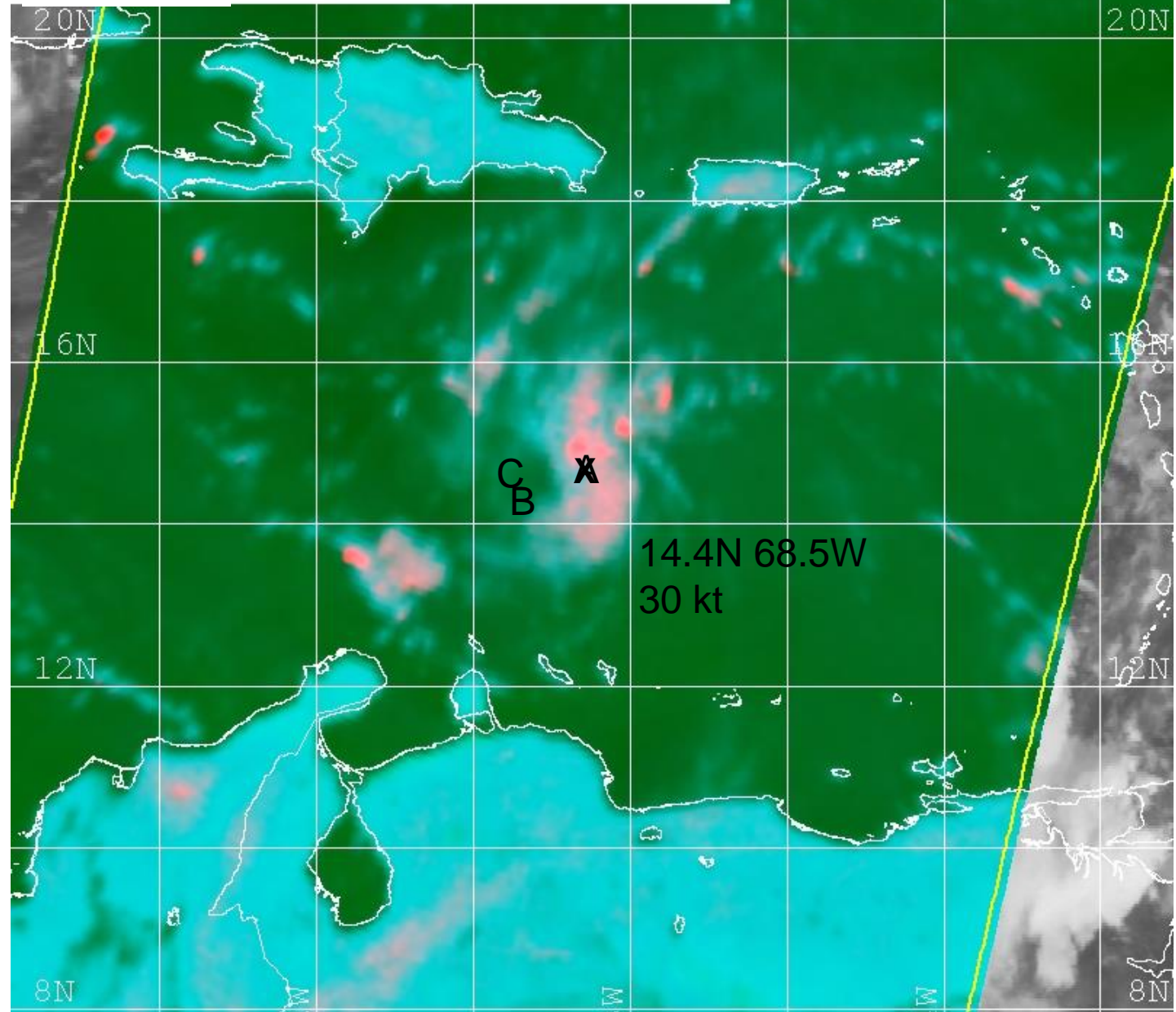




0620Z AQUA-1 COMPOSITE  
0615Z GOES-12 IR

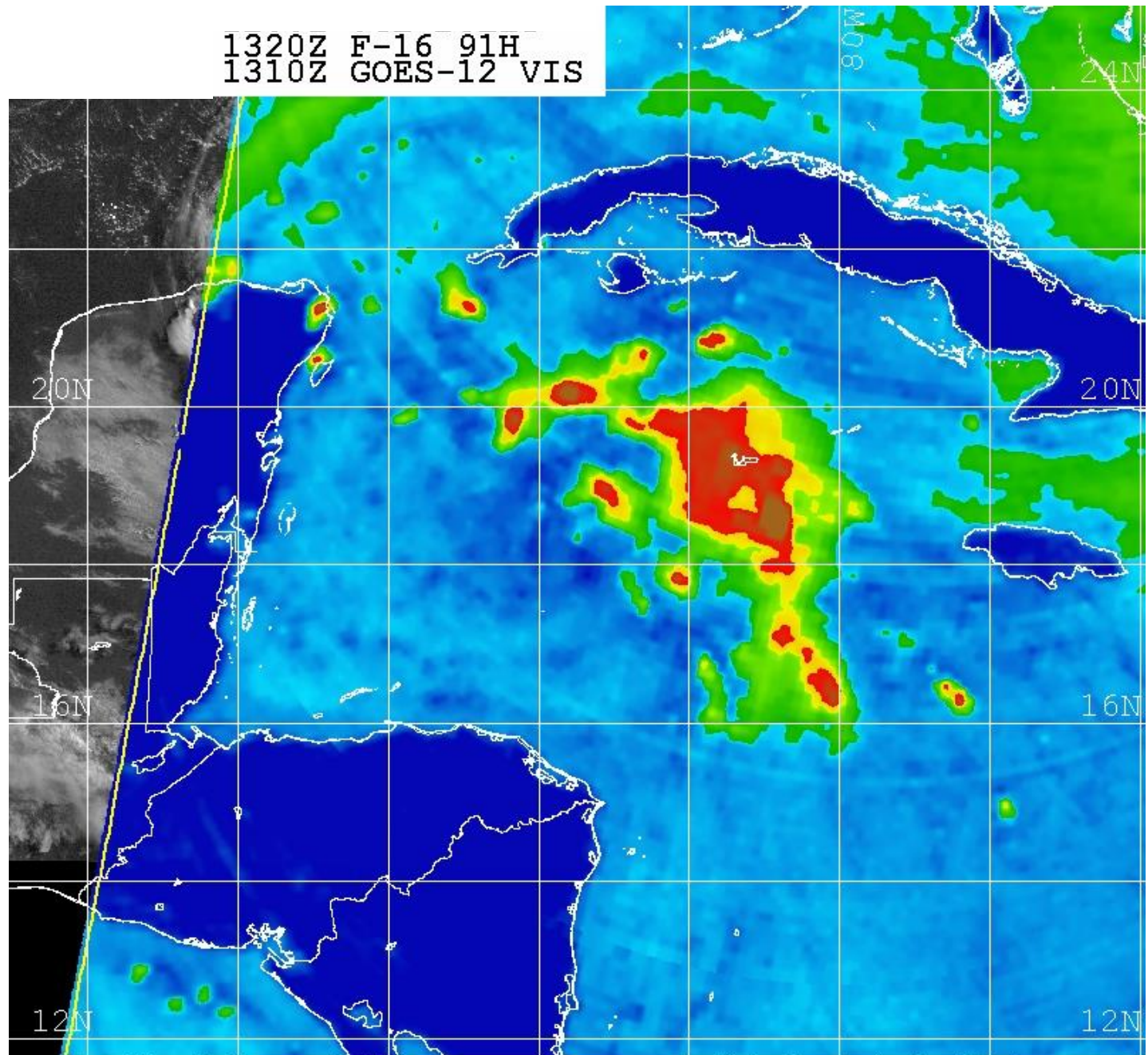
## Exercise 7

A



1320Z F-16 91H  
1310Z GOES-12 VIS

## Exercise 8

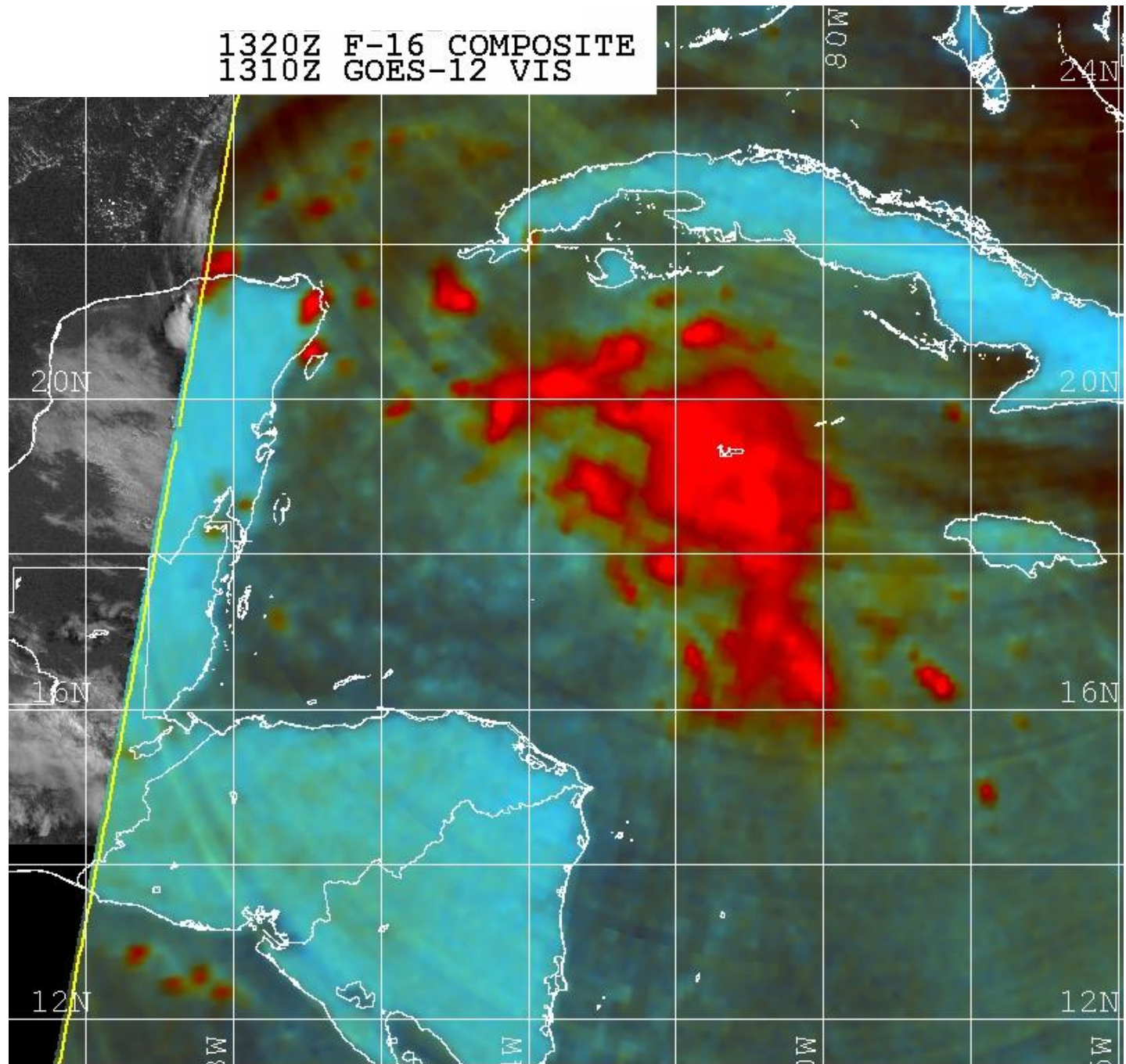


Naval Research Lab [www.nrlmry.navy.mil/sat\\_products.html](http://www.nrlmry.navy.mil/sat_products.html)  
<-- 85H Brightness Temp (Kelvin) -->



1320Z F-16 COMPOSITE  
1310Z GOES-12 VIS

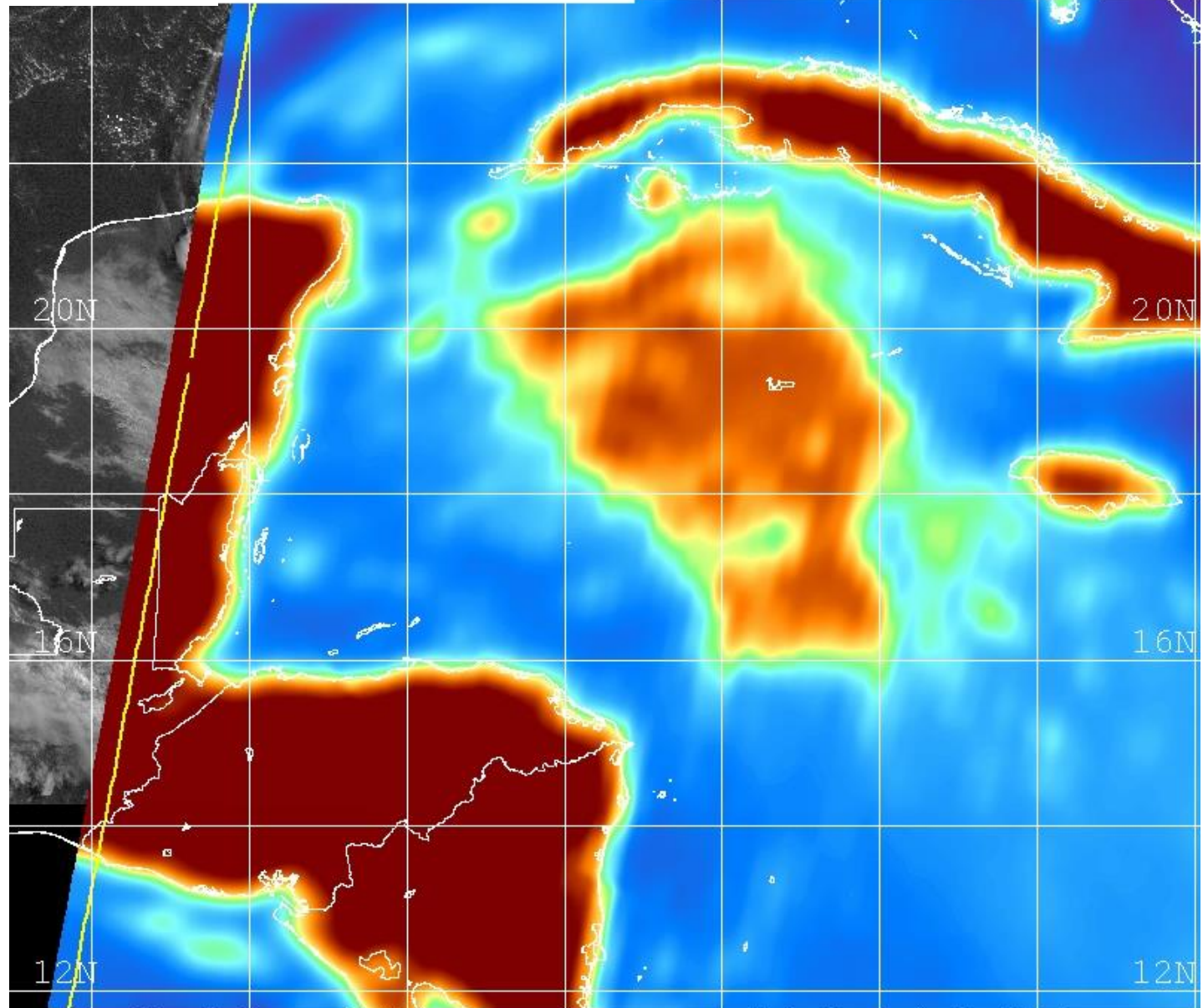
## Exercise 8



Naval Research Lab [www.nrlmry.navy.mil/sat\\_products.html](http://www.nrlmry.navy.mil/sat_products.html)  
Red=91PCT Green=91H Blue=91V

1320Z F-16 37H  
1310Z GOES-12 VIS

## Exercise 8



Naval Research Lab [www.nrlmry.navy.mil/sat\\_products.html](http://www.nrlmry.navy.mil/sat_products.html)  
<-- 37H Brightness Temp (Kelvin) -->

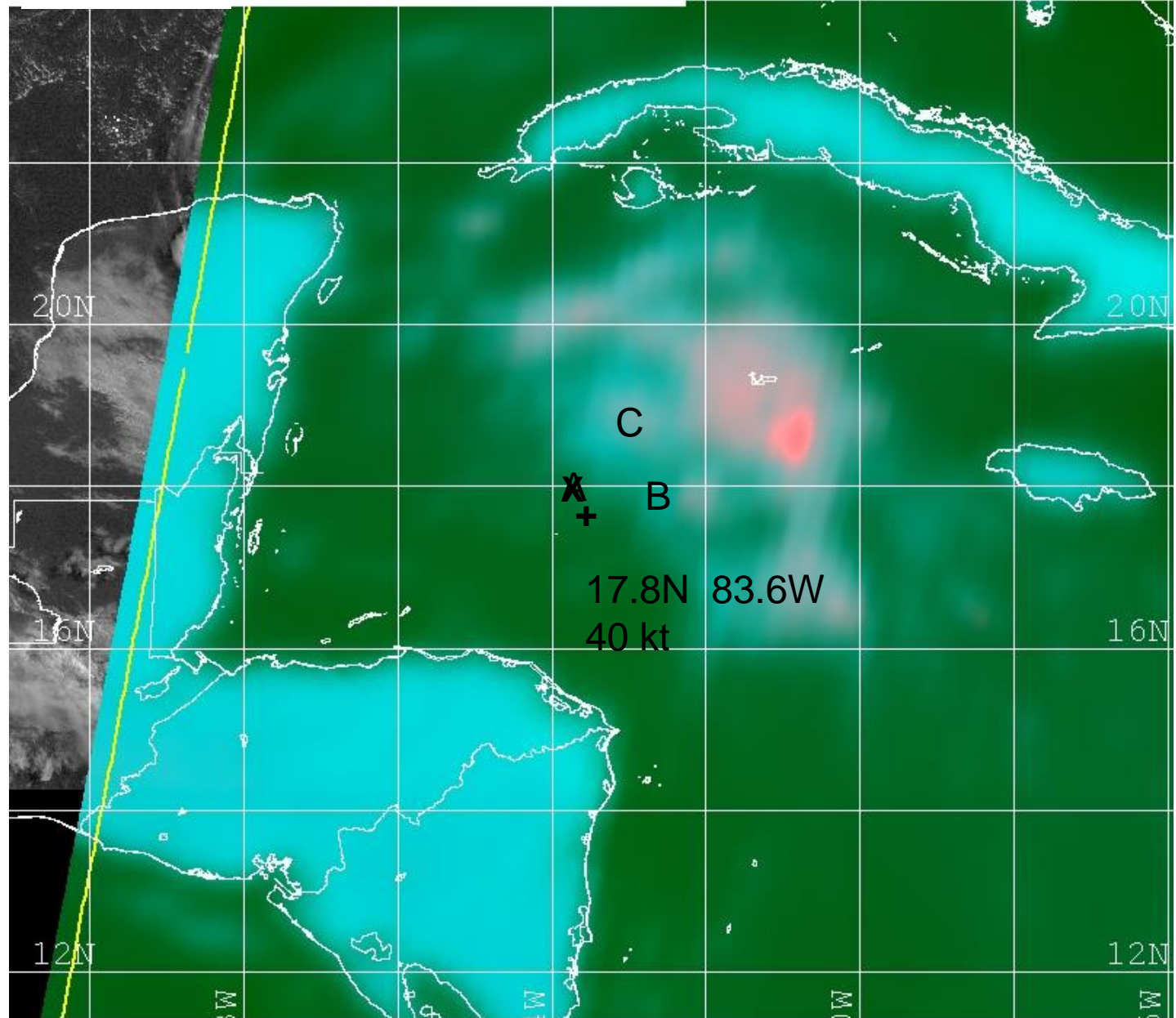
160 170 180 190 200 210 220 230 240 250 260



1320Z F-16 COMPOSITE  
1310Z GOES-12 VIS

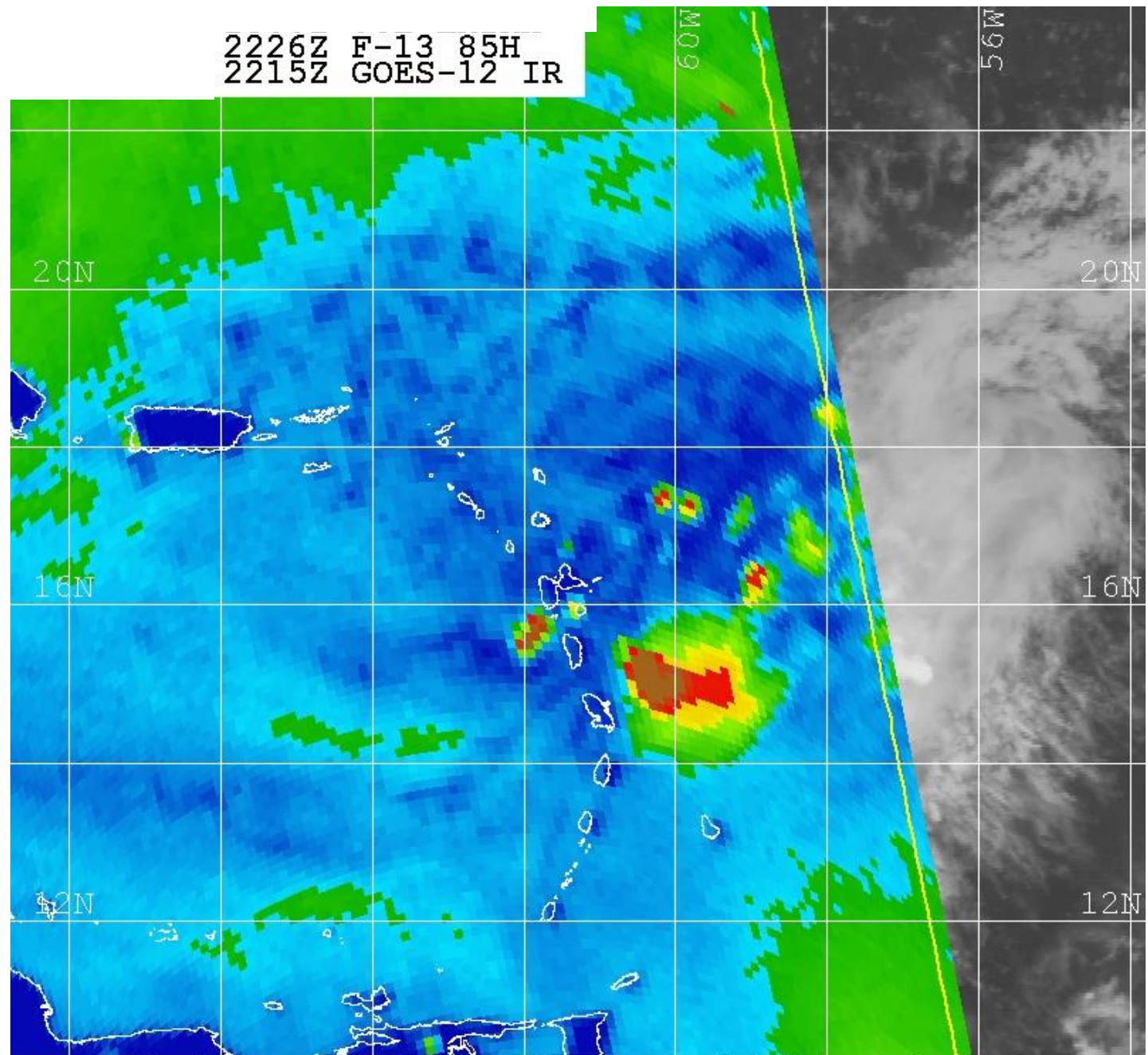
## Exercise 8

A



2226Z F-13 85H  
2215Z GOES-12 IR

## Exercise 9



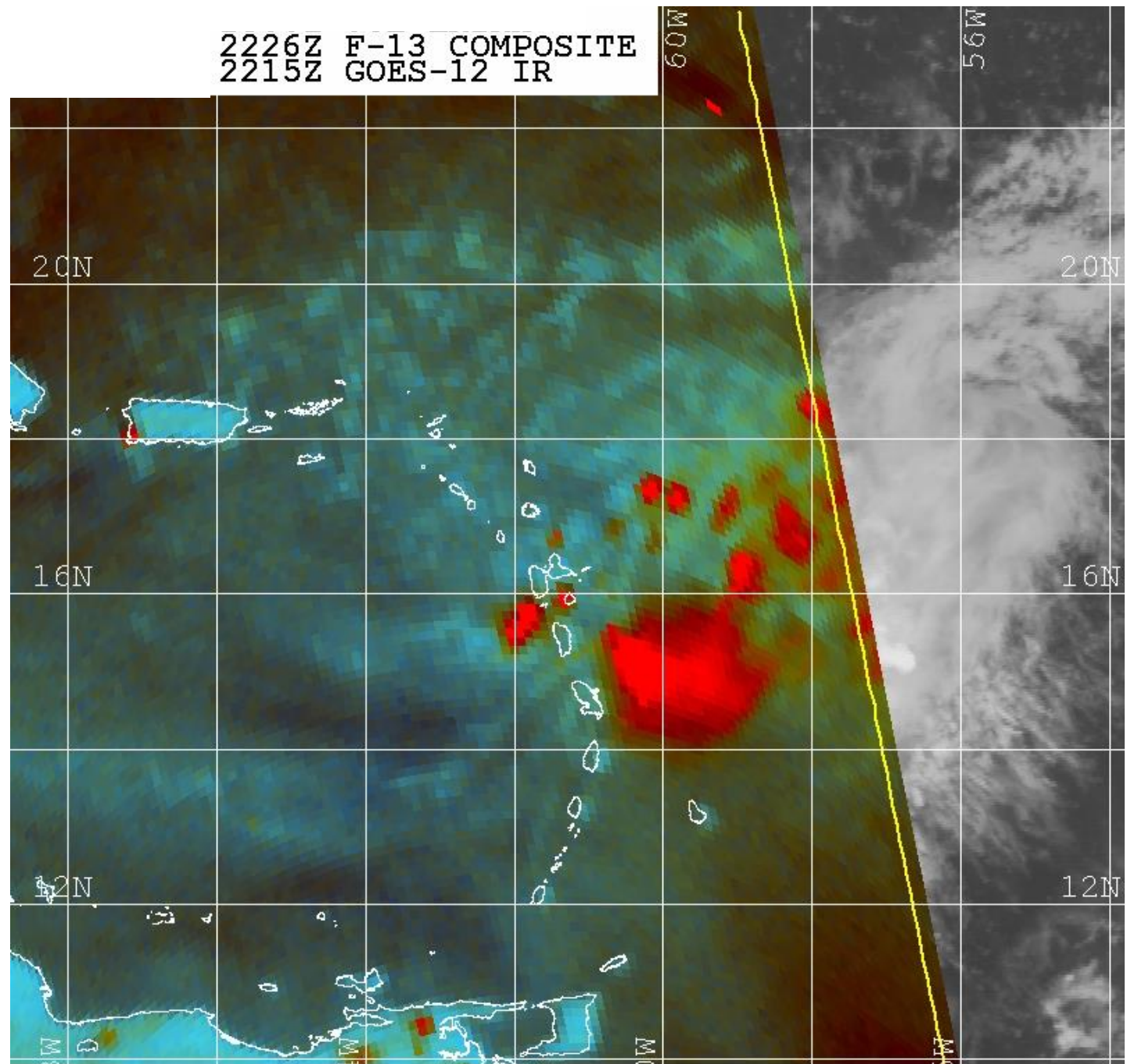
Naval Research Lab [www.nrlmry.navy.mil/sat\\_products.html](http://www.nrlmry.navy.mil/sat_products.html)  
<-- 85H Brightness Temp (Kelvin) -->

190 200 210 220 230 240 250 260 270



2226Z F-13 COMPOSITE  
2215Z GOES-12 IR

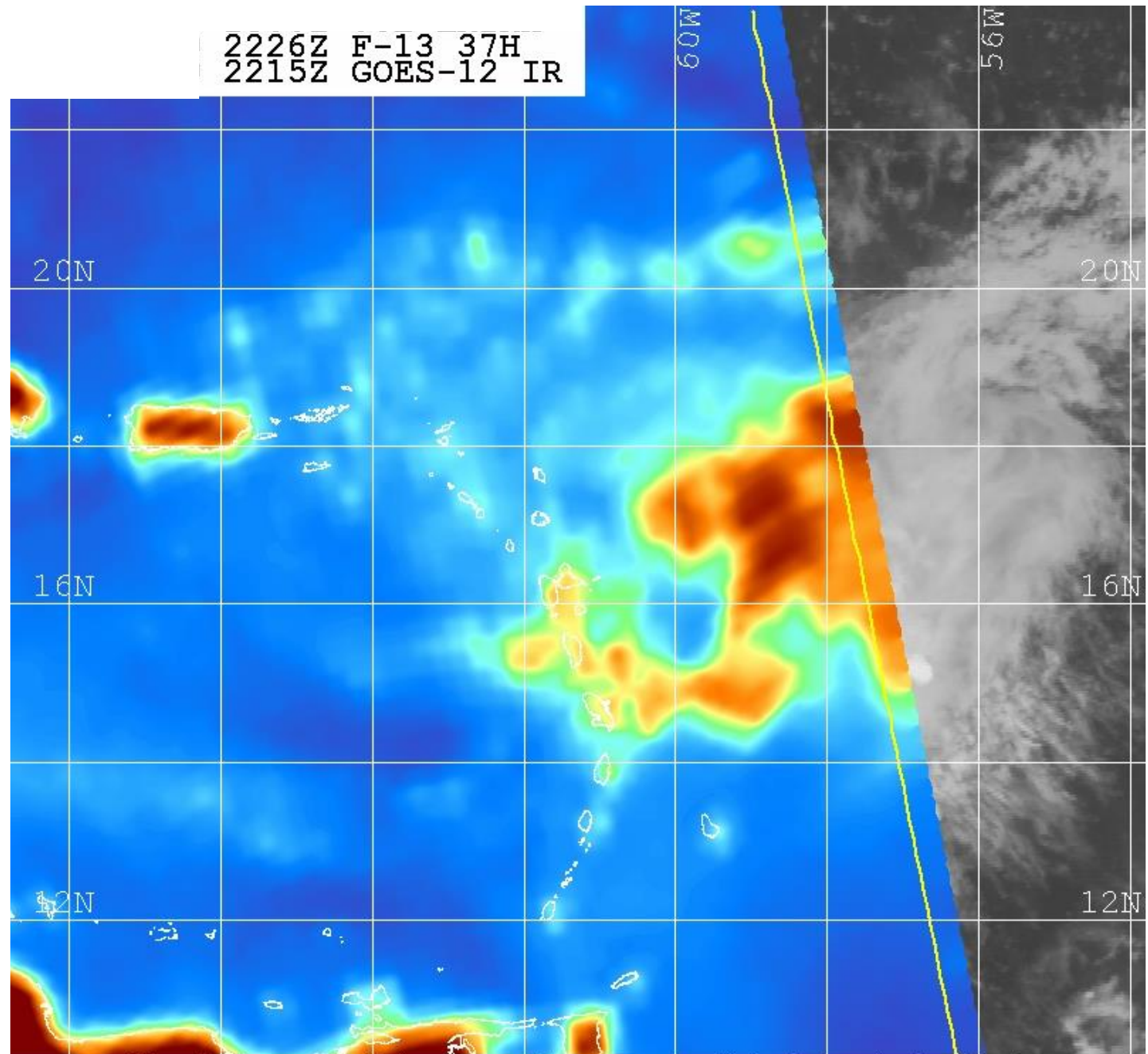
## Exercise 9



Naval Research Lab [www.nrlmry.navy.mil/sat\\_products.html](http://www.nrlmry.navy.mil/sat_products.html)  
Red=85PCT Green=85H Blue=85V

2226Z F-13 37H  
2215Z GOES-12 IR

## Exercise 10



Naval Research Lab [www.nrlmry.navy.mil/sat\\_products.html](http://www.nrlmry.navy.mil/sat_products.html)  
<-- 37H Brightness Temp (Kelvin) -->

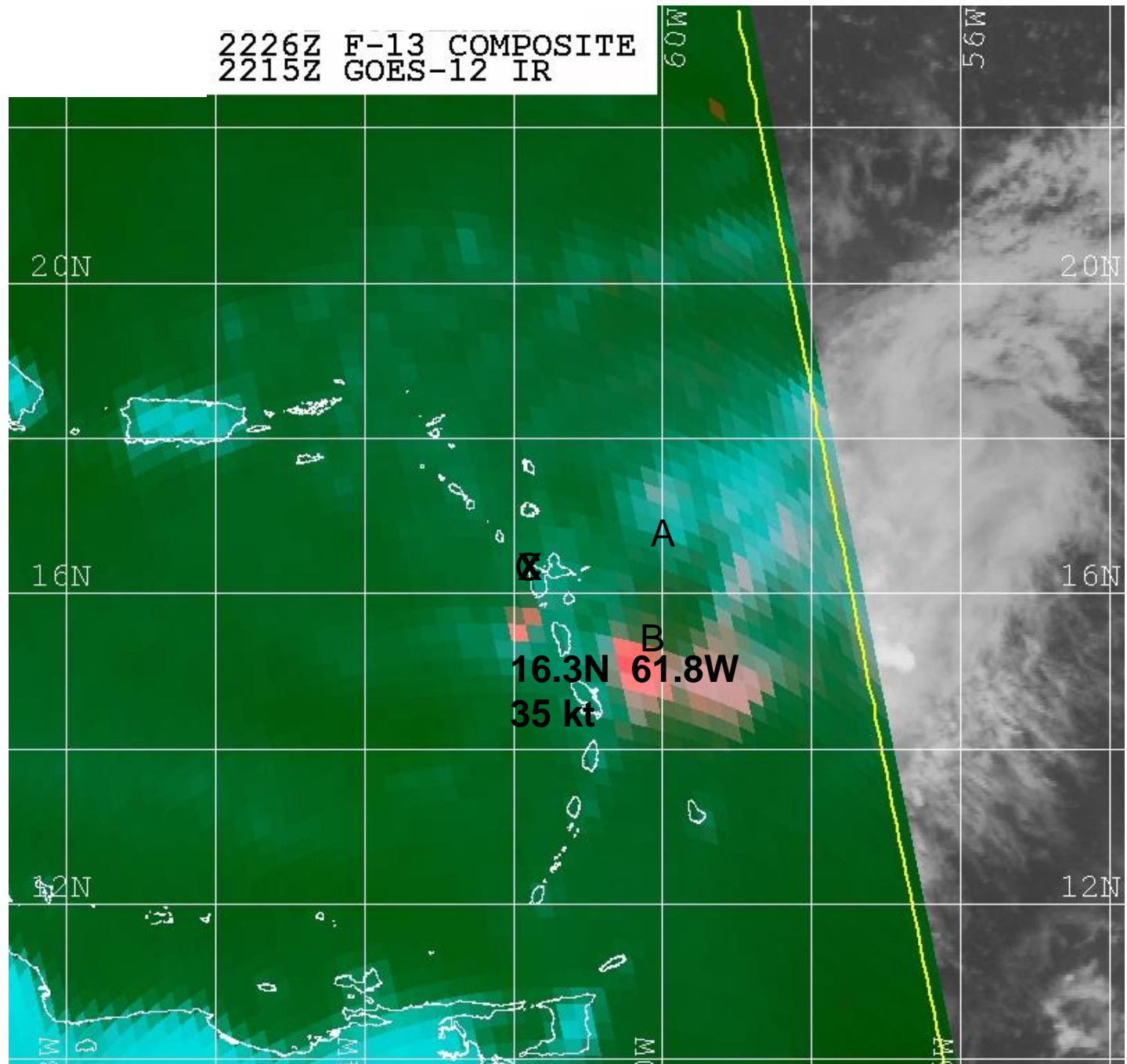
160 170 180 190 200 210 220 230 240 250 260



2226Z F-13 COMPOSITE  
2215Z GOES-12 IR

## Exercise 9

# C



09/02/09 1800Z 06L ERIKA  
09/02/09 2226Z F-13 OVERPASS  
09/02/09 2215Z GOES-12 IR

## Exercise 9

