

Dvorak Pattern Recognition Exercises

Objective: To determine cloud patterns and cloud pattern measurements of the following examples of tropical weather systems.

Clicker Instructions

A) Curved Band Cloud Pattern

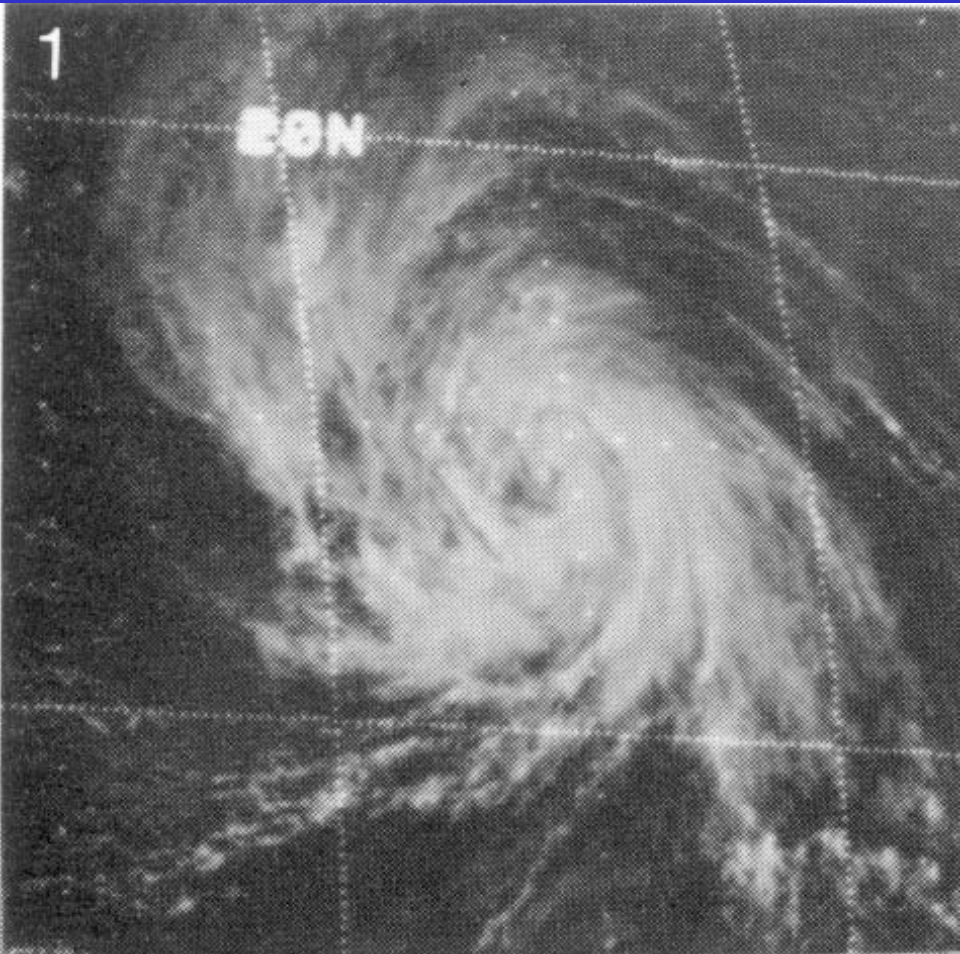
B) Shear Cloud Pattern

C) CDO Embedded Center Cloud Pattern

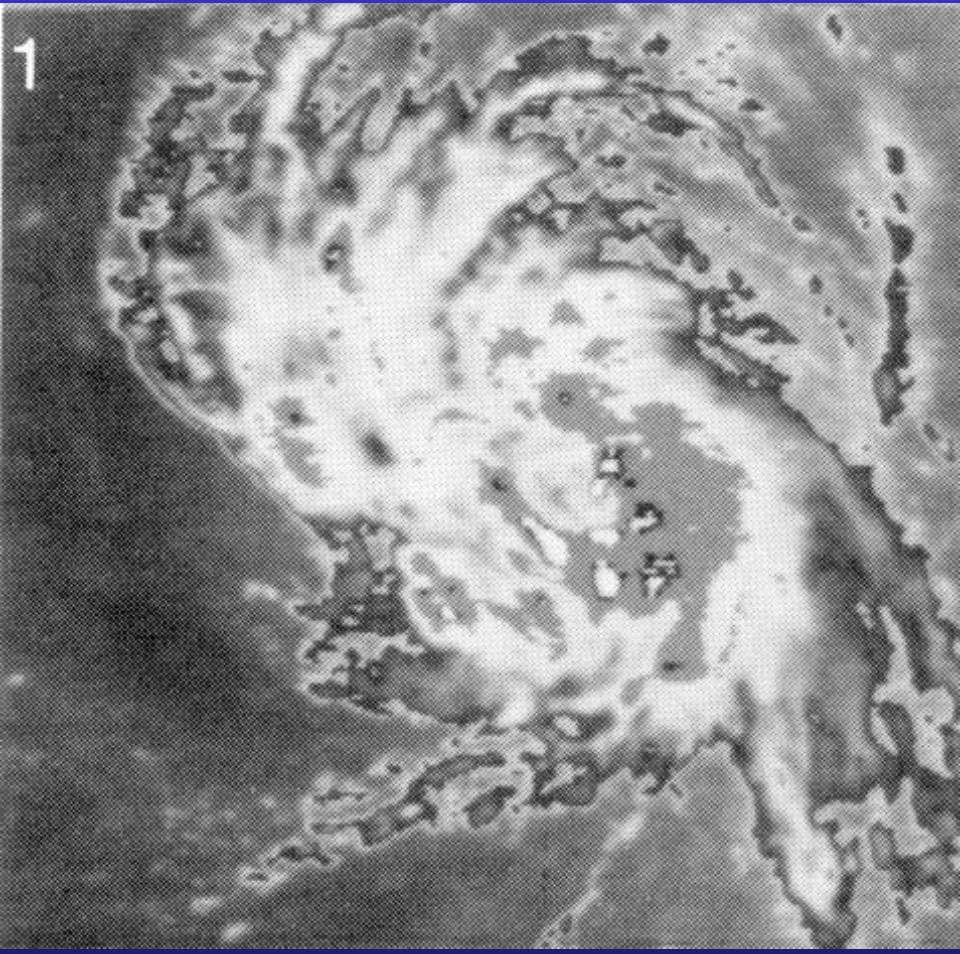
D) Eye Cloud Pattern

E) Central Cold Cover Pattern

Pattern Recognition Exercise 1



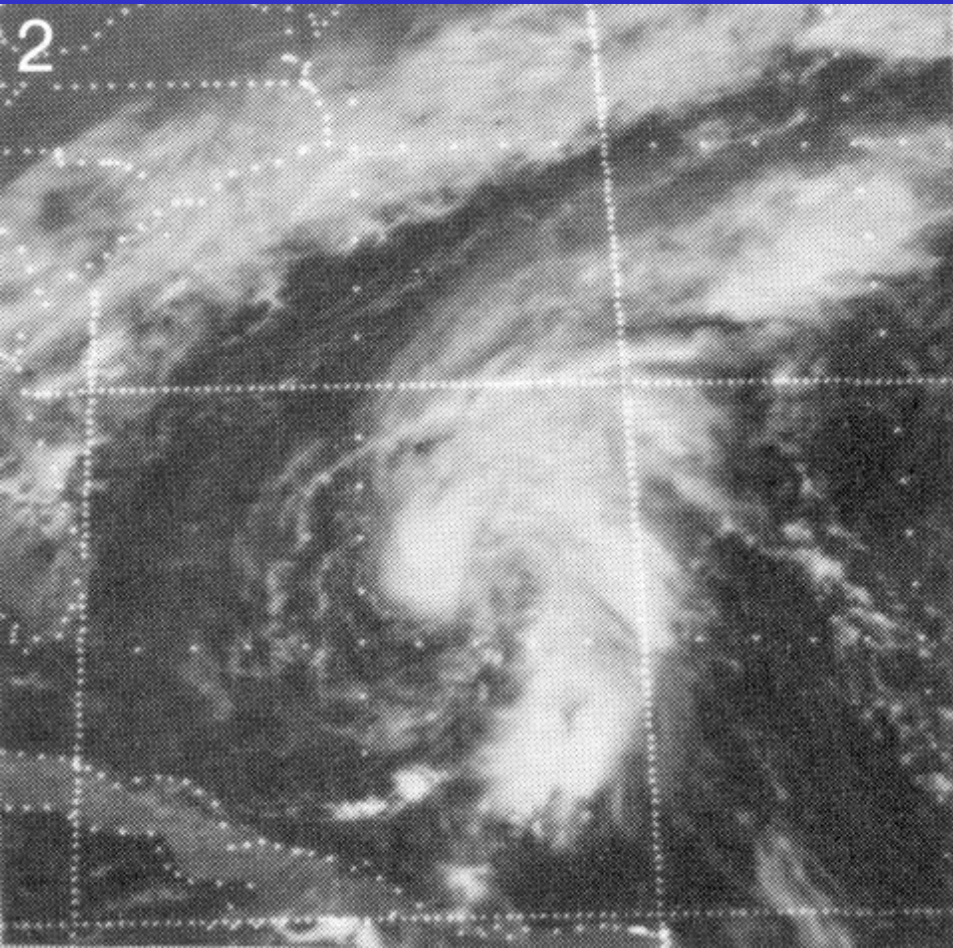
Visible



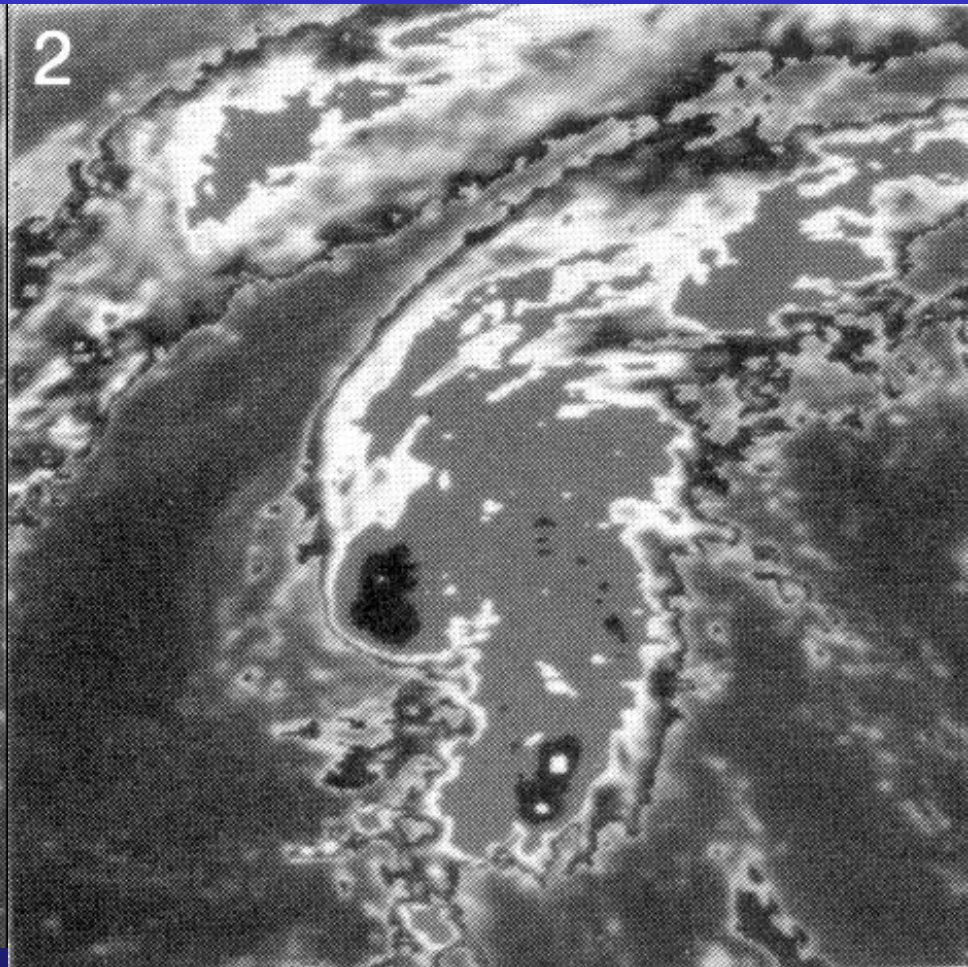
Infrared

Curved band pattern DT=3.0- Recon found 1002.3 mb for T2.8

Pattern Recognition Exercise 2



Visible



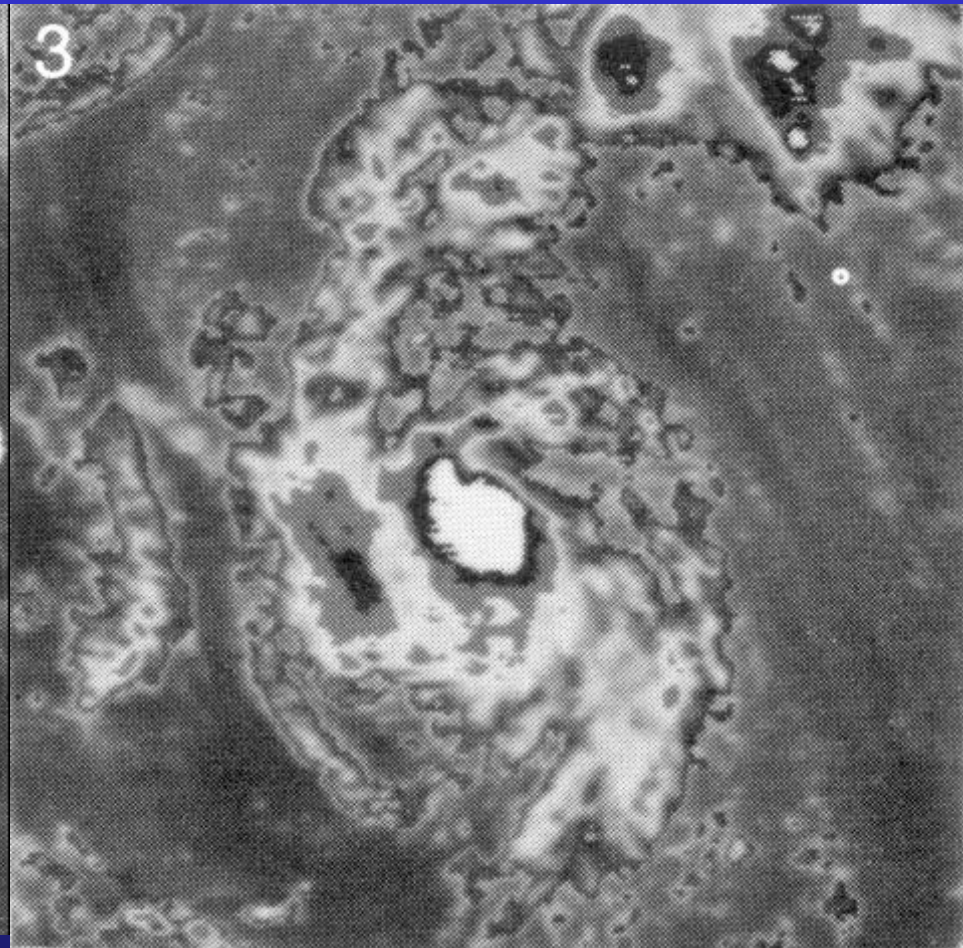
Infrared

1.5 deg CDO DT=3.5 Recon found 995 mb for T3.4

Pattern Recognition Exercise 3



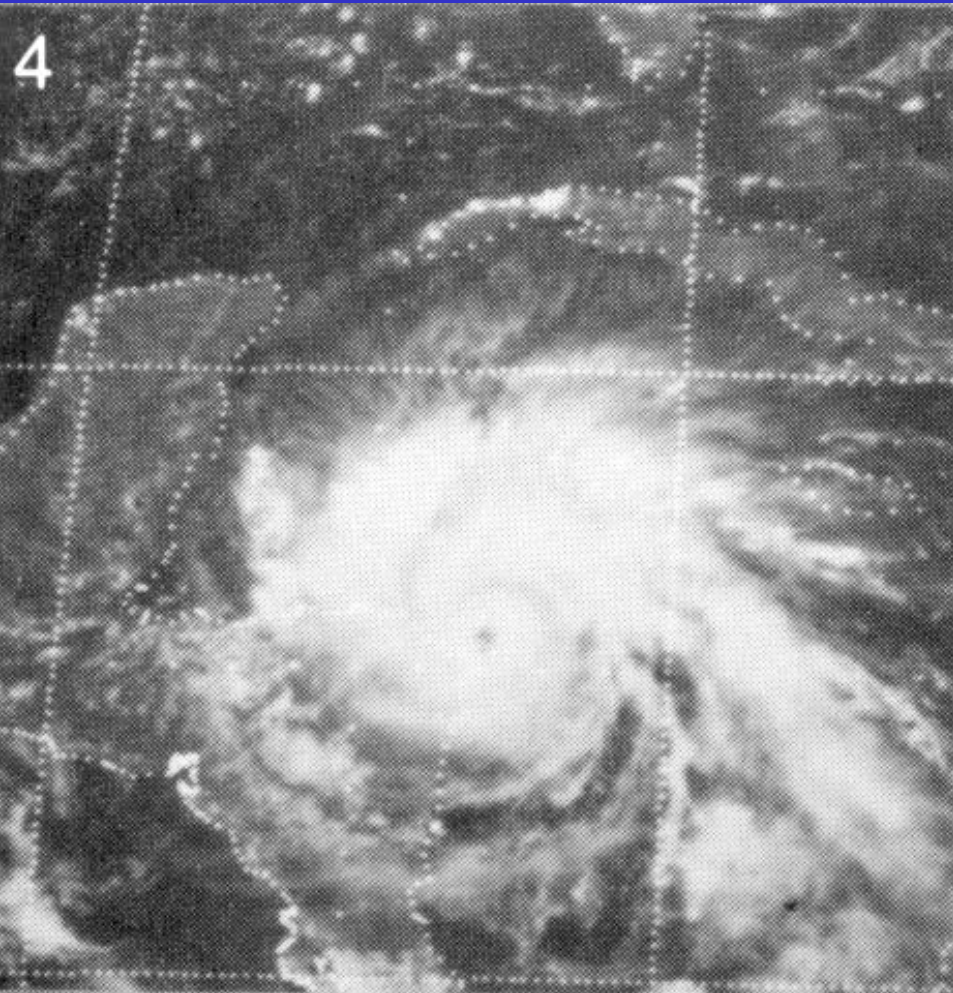
Visible



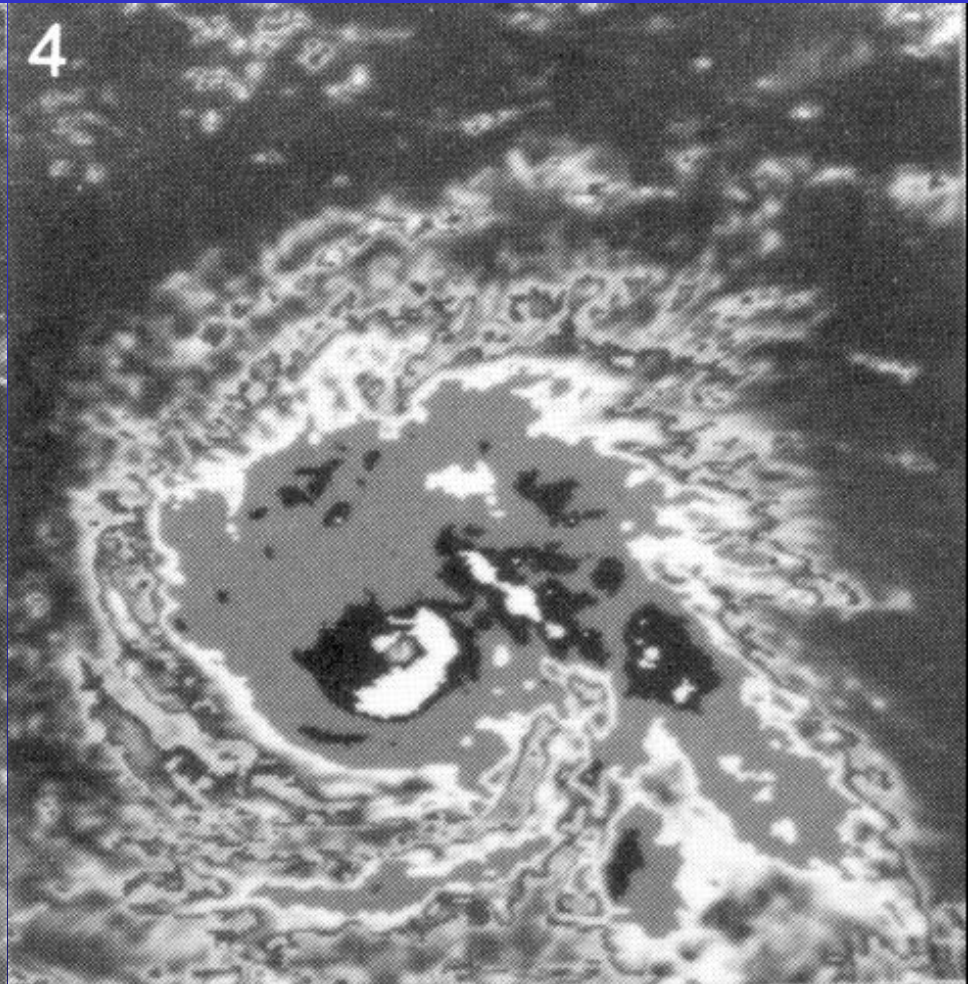
Infrared

Curved band pattern DT=2.5+ Recon found 1003.4 mb for T2.7

Pattern Recognition Exercise 4



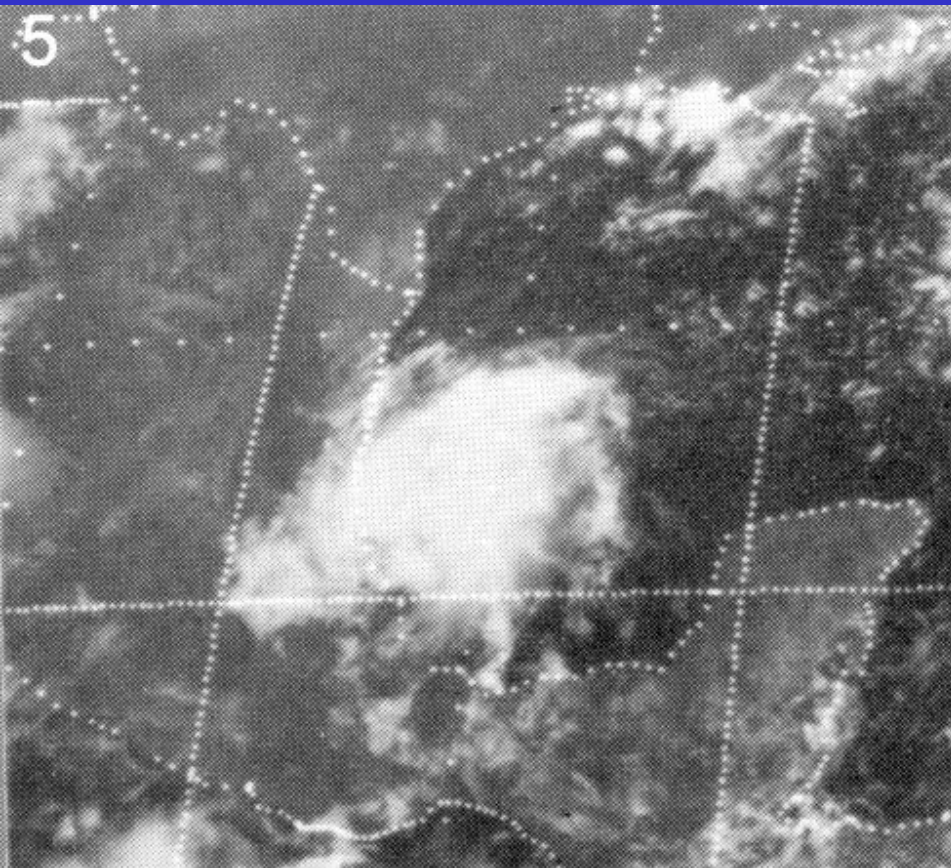
Visible



Infrared

VIS Eye Pattern DT=5.0 Recon found 966 mb for T5.2

Pattern Recognition Exercise 5



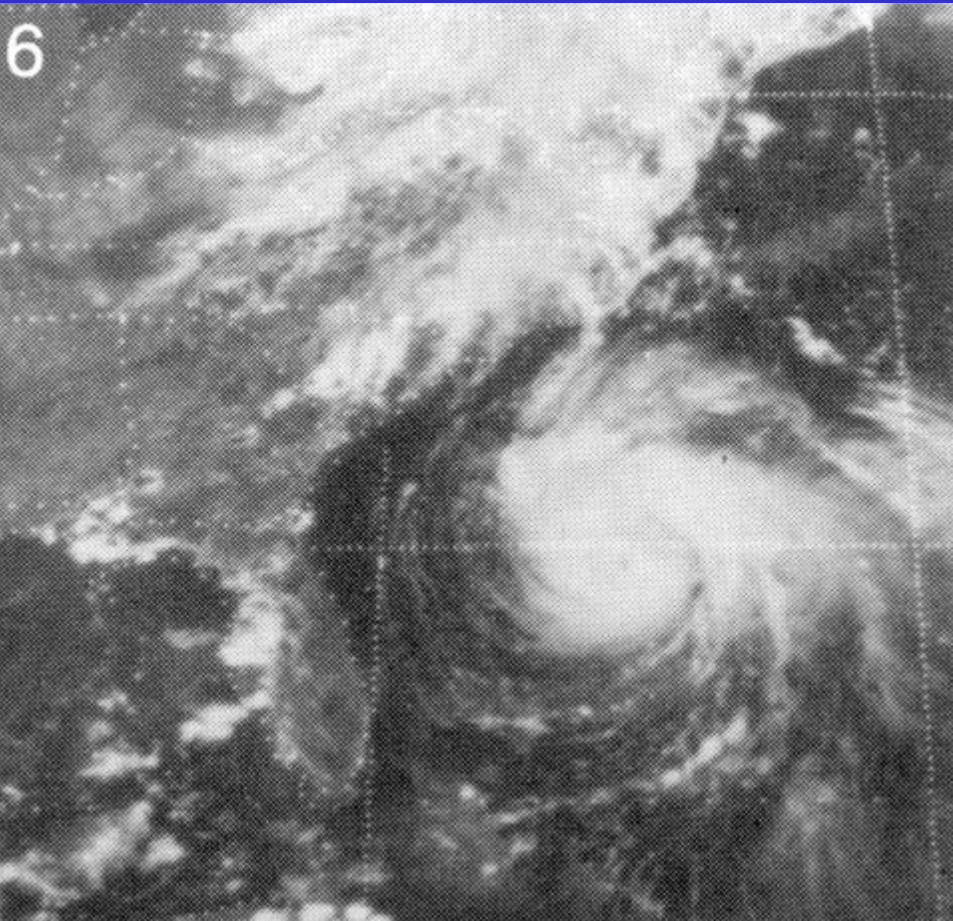
Visible



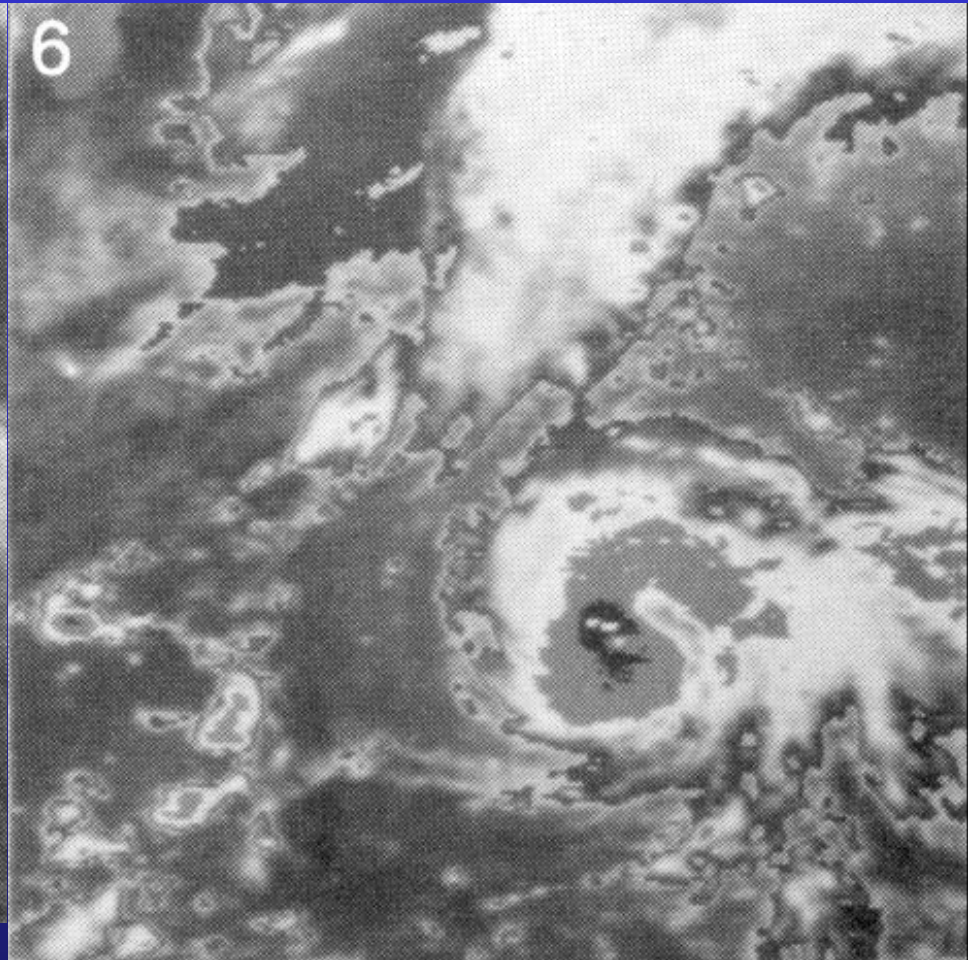
Infrared

Curved band pattern DT=2.5- Recon found 1006 mb for T2.4

Pattern Recognition Exercise 6



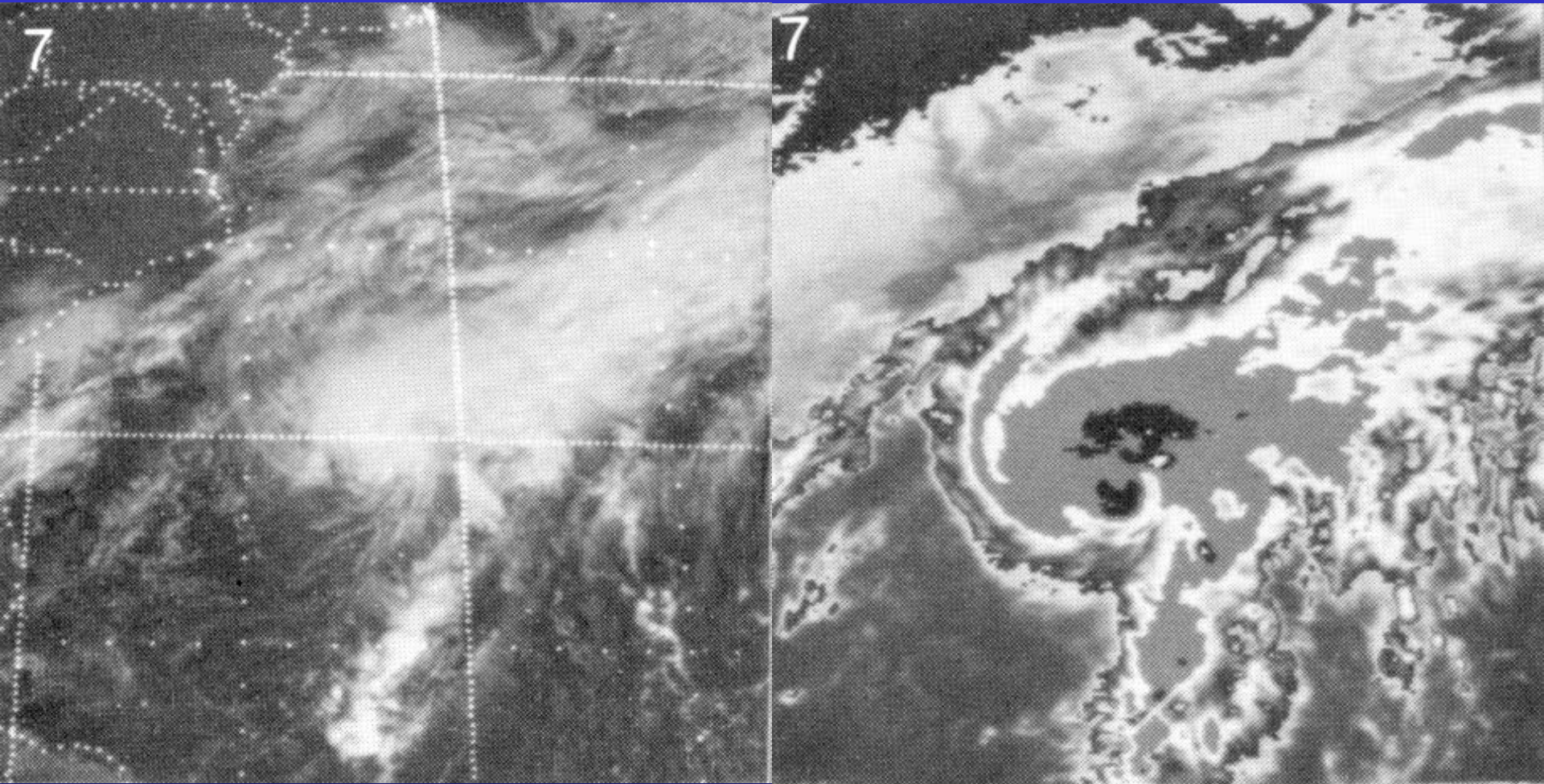
Visible



Infrared

VIS Eye Pattern DT=5.0+ Recon found 964 mb for T5.3

Pattern Recognition Exercise 7

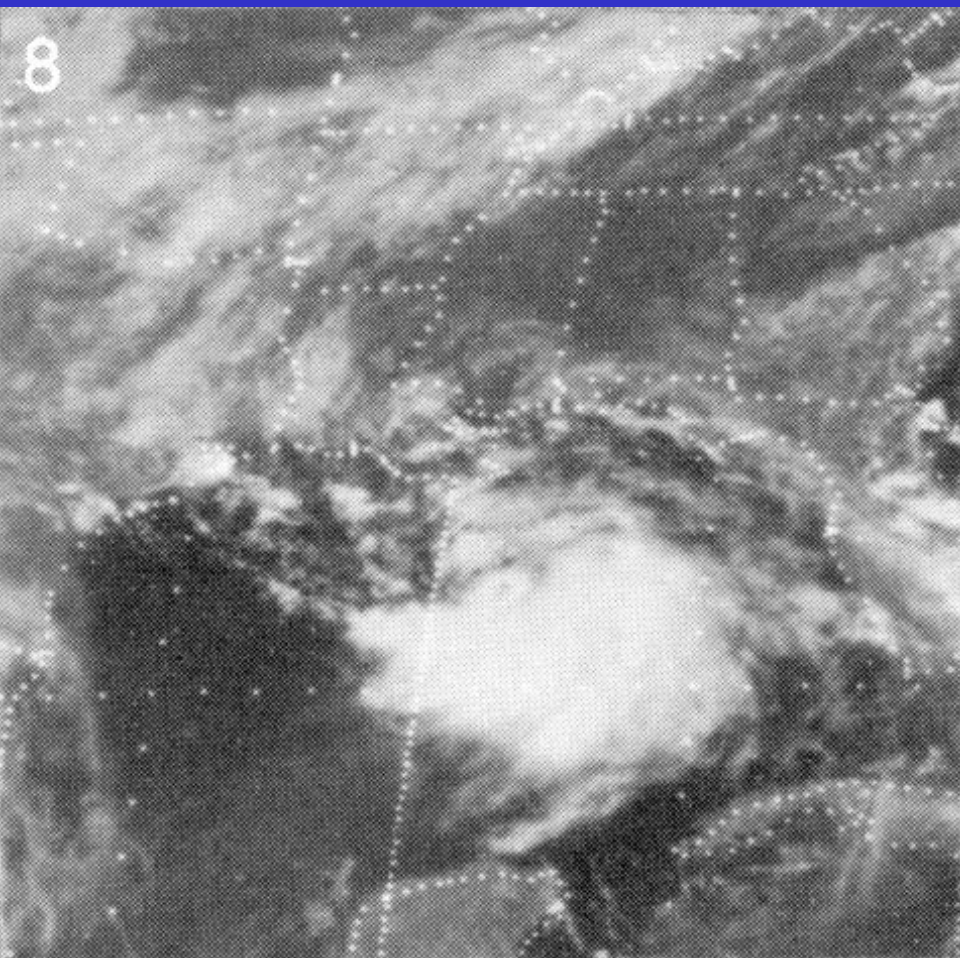


Visible

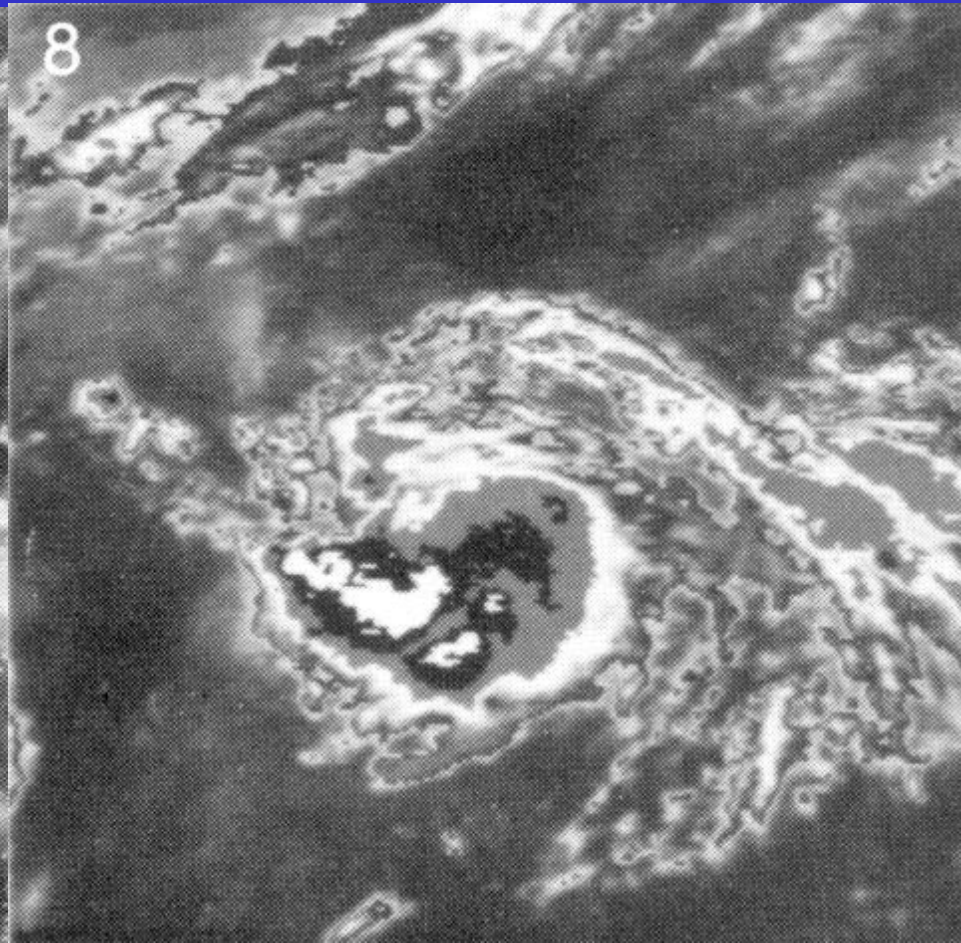
Infrared

VIS Eye Pattern DT=4.0- Recon found 990 mb for T3.8

Pattern Recognition Exercise 8



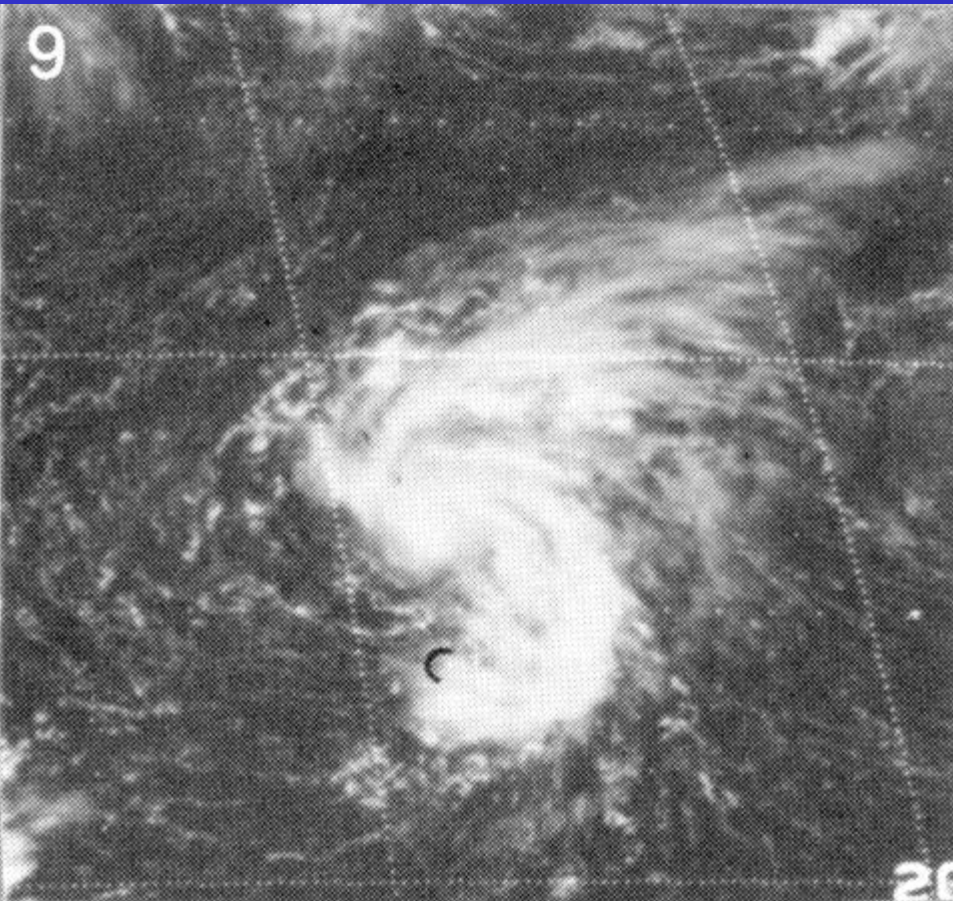
Visible



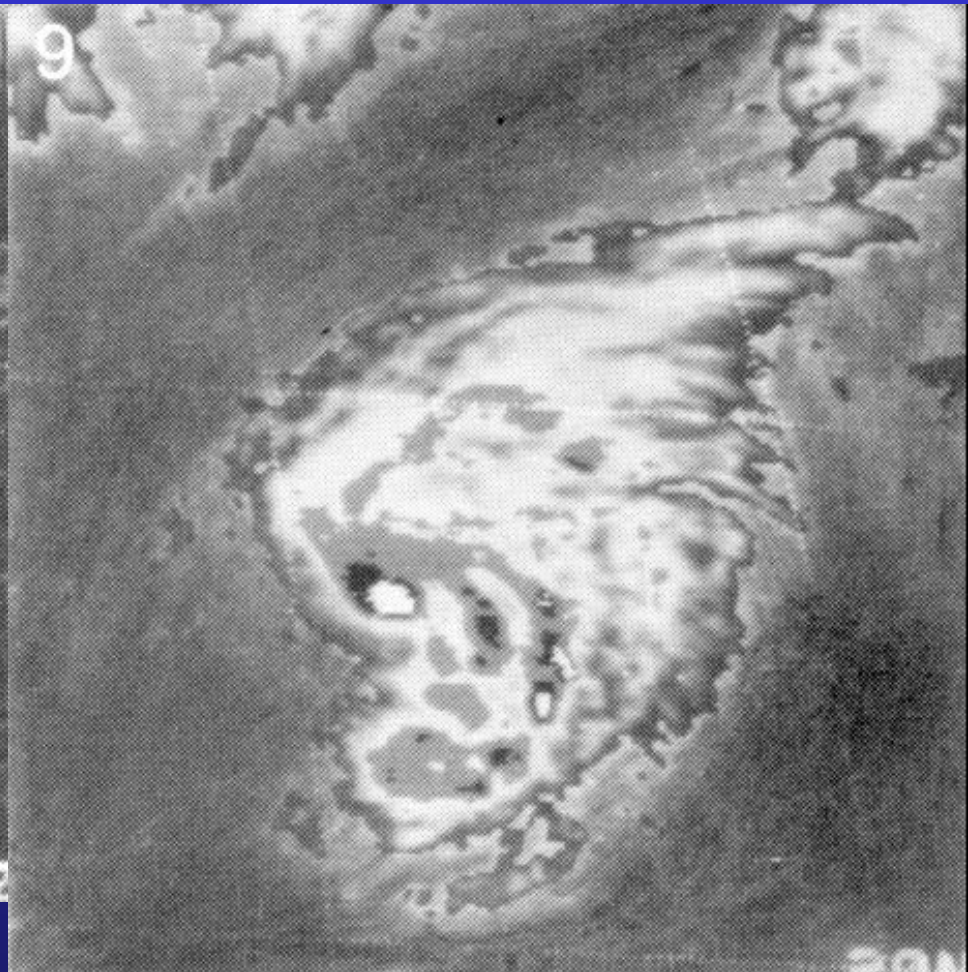
Infrared

Curved band pattern DT=1.5 Recon found 1011.4 mb for T1.7

Pattern Recognition Exercise 9



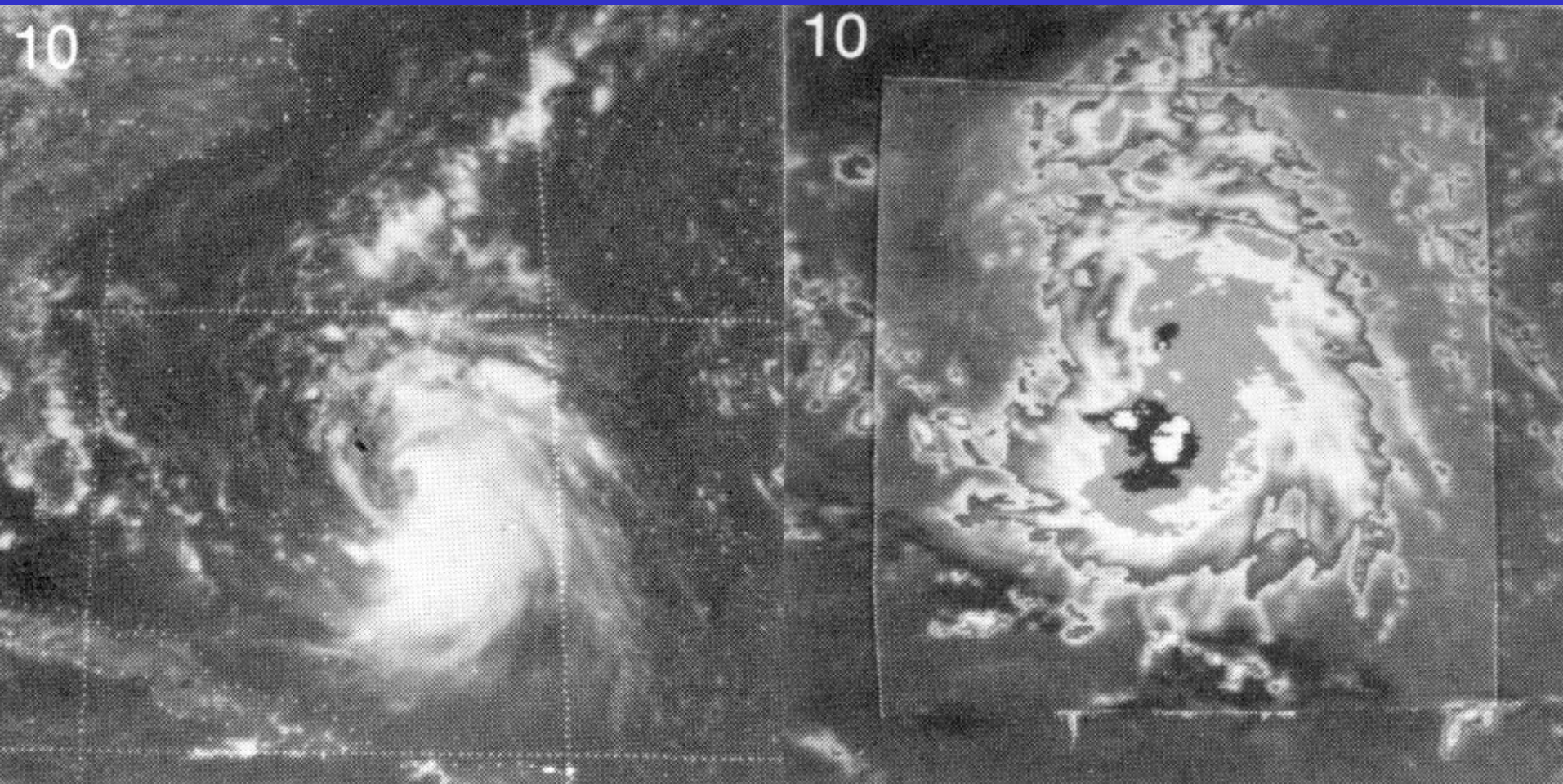
Visible



Infrared

Irregular CDO DT=3.5 Recon found 993 mb for T3.6

Pattern Recognition Exercise 10

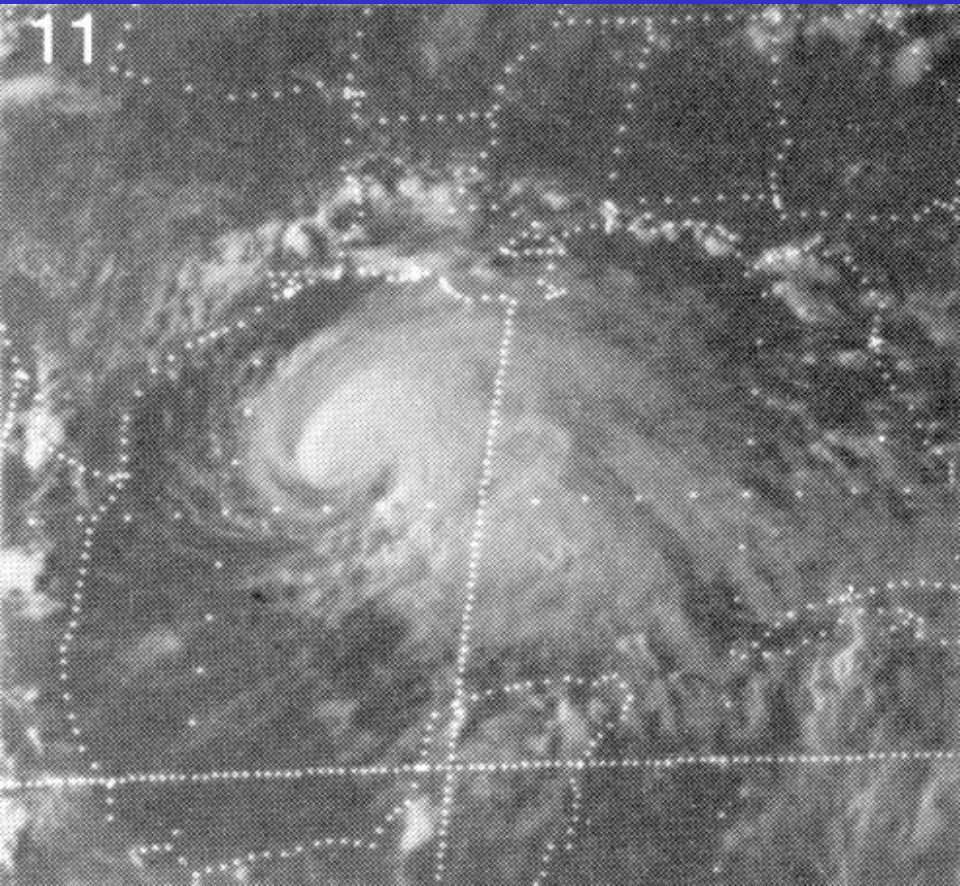


Visible

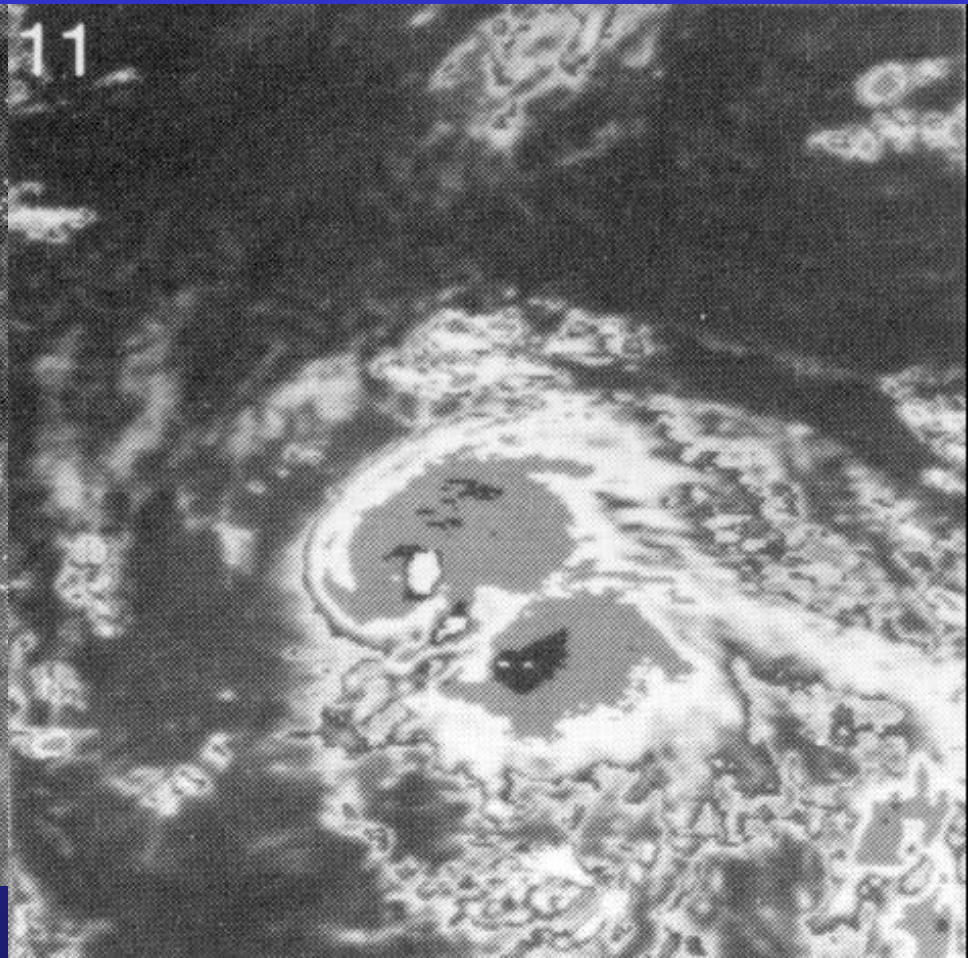
Infrared

Curved band pattern DT=2.5 Recon found 1006 mb for T2.4

Pattern Recognition Exercise 11



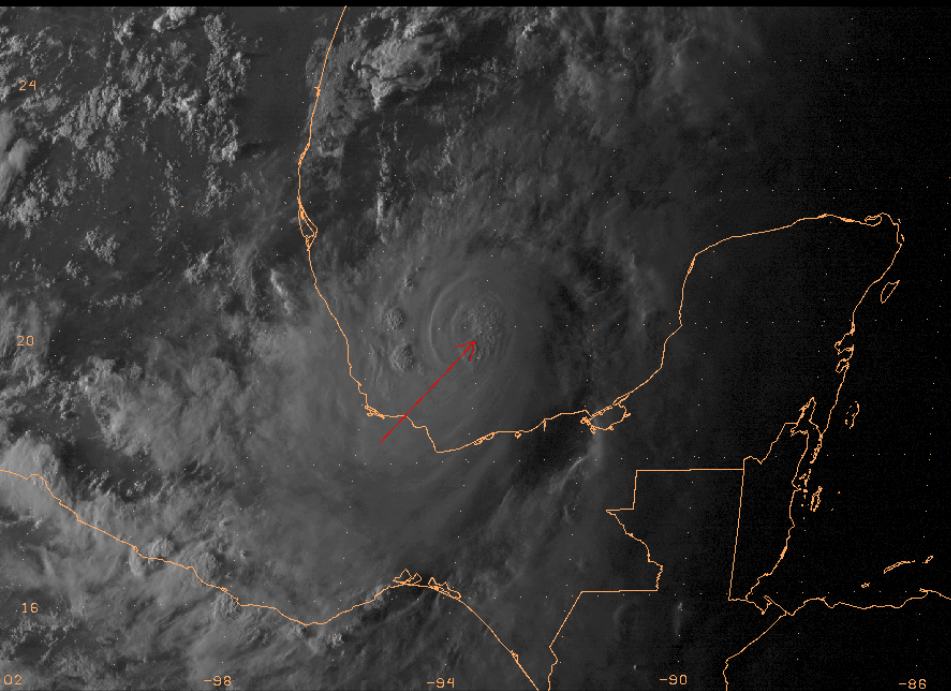
Visible



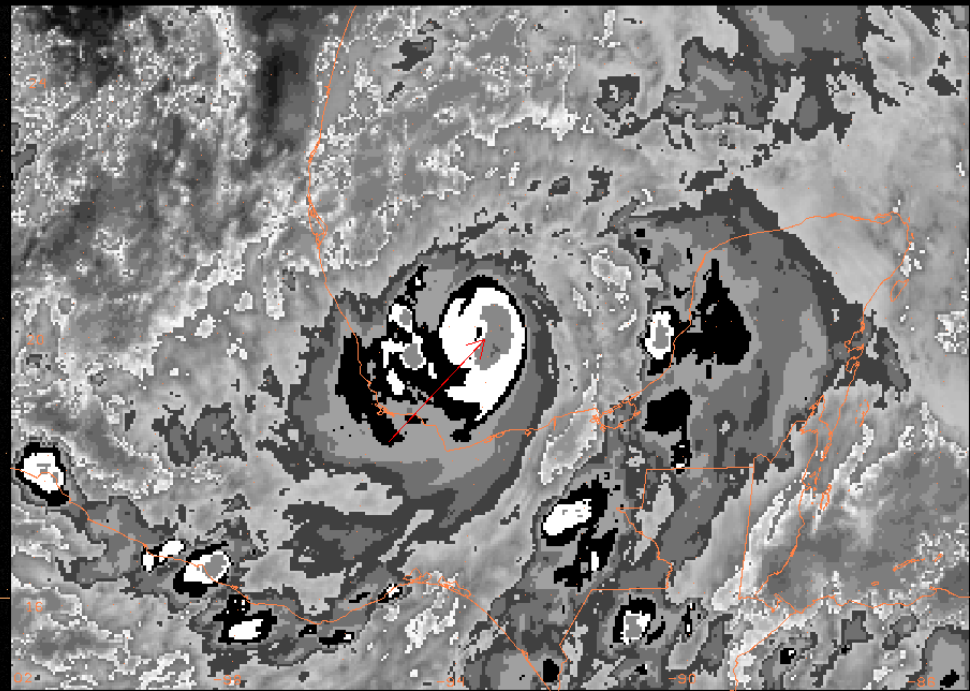
Infrared

VIS CDO DT=4.5 Recon found 979 mb for T4.5

Pattern Recognition Exercise 12



60ES13 VIS 19.8 -94.1 20100916_2345



60ES13 IR 19.8 -94.1 20100916_2345

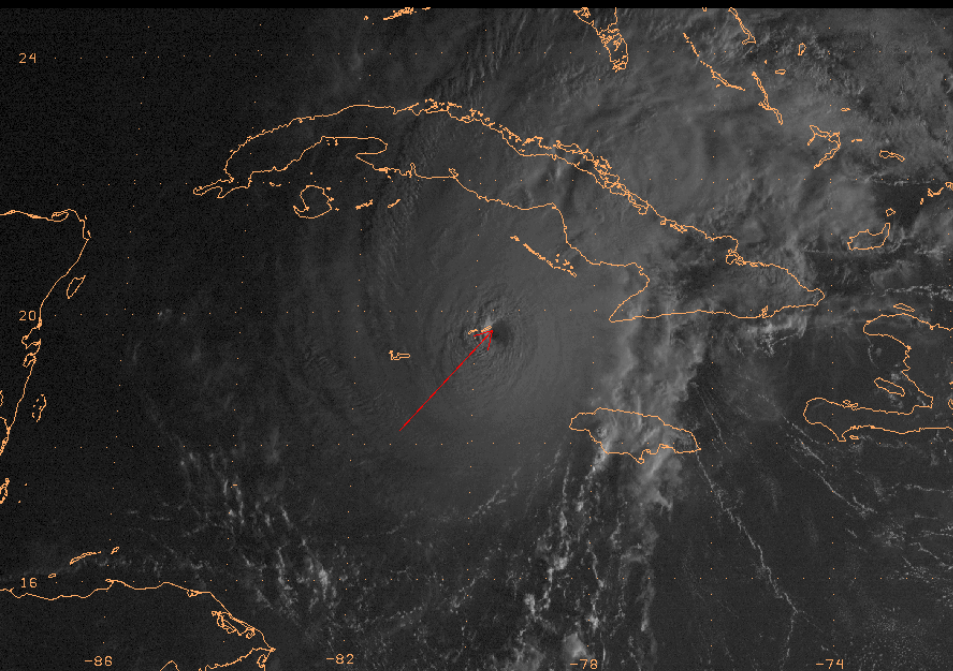
Visible

Infrared

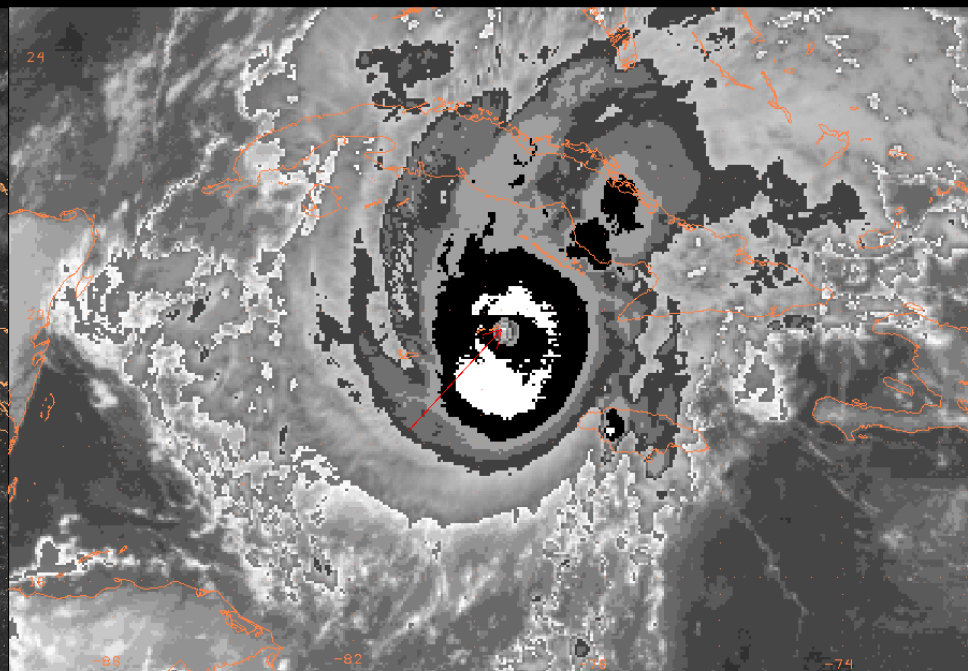
VIS CDO/IR EMBDD CNTR DT=5.0

Recon-based best track 90 kt.

Pattern Recognition Exercise 13



GOES12 VIS 19.7 -79.7 20081108_1145



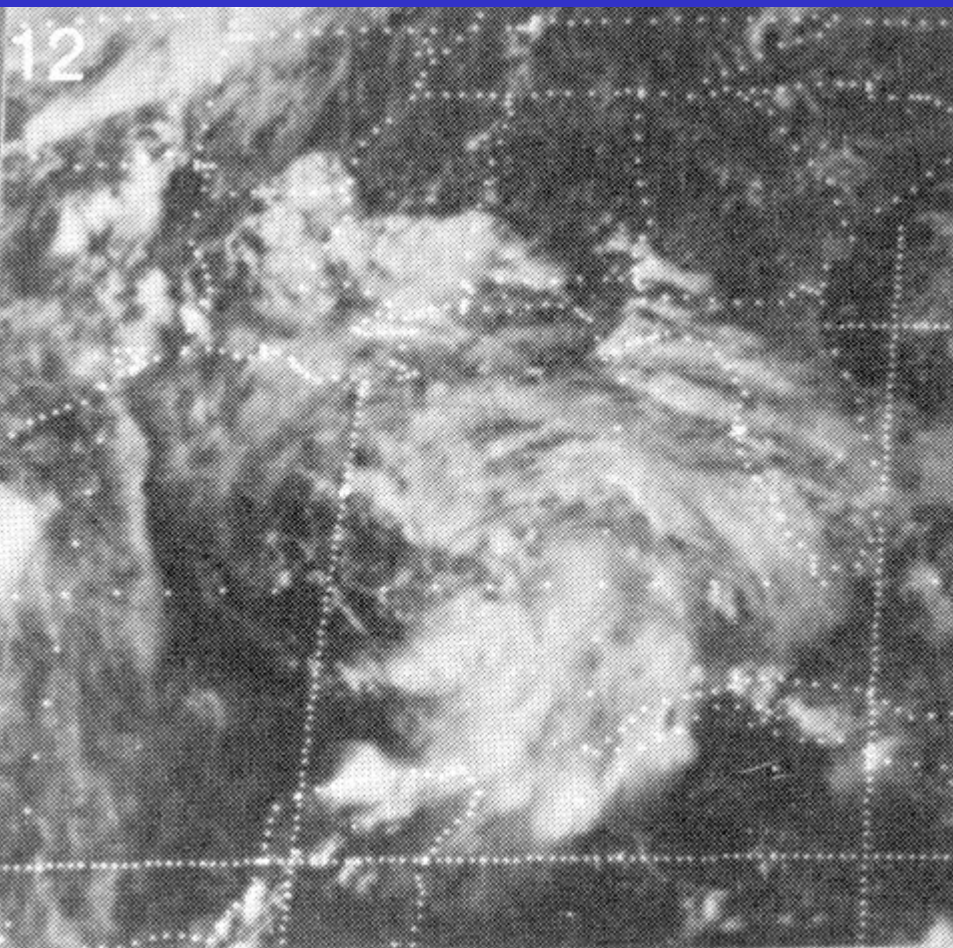
GOES12 IR 19.7 -79.7 20081108_1145

Visible

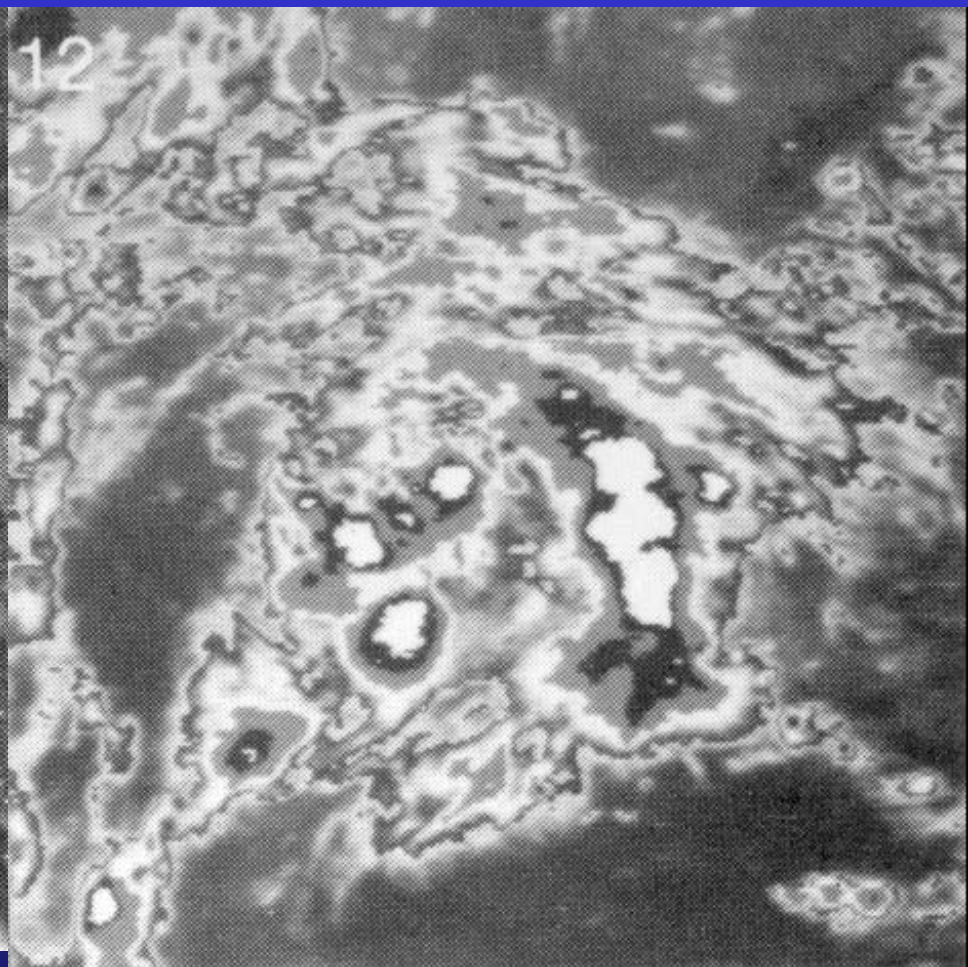
Infrared

IR EYE DT=6.5 Recon-based best track 125 kt.

Pattern Recognition Exercise 14



Visible



Infrared

Curved band pattern DT=1.5 Recon not available

