

Briefing Examples

Example #1



HURRICANE IRMA

BRIEFING

National Weather Service Miami/South Florida

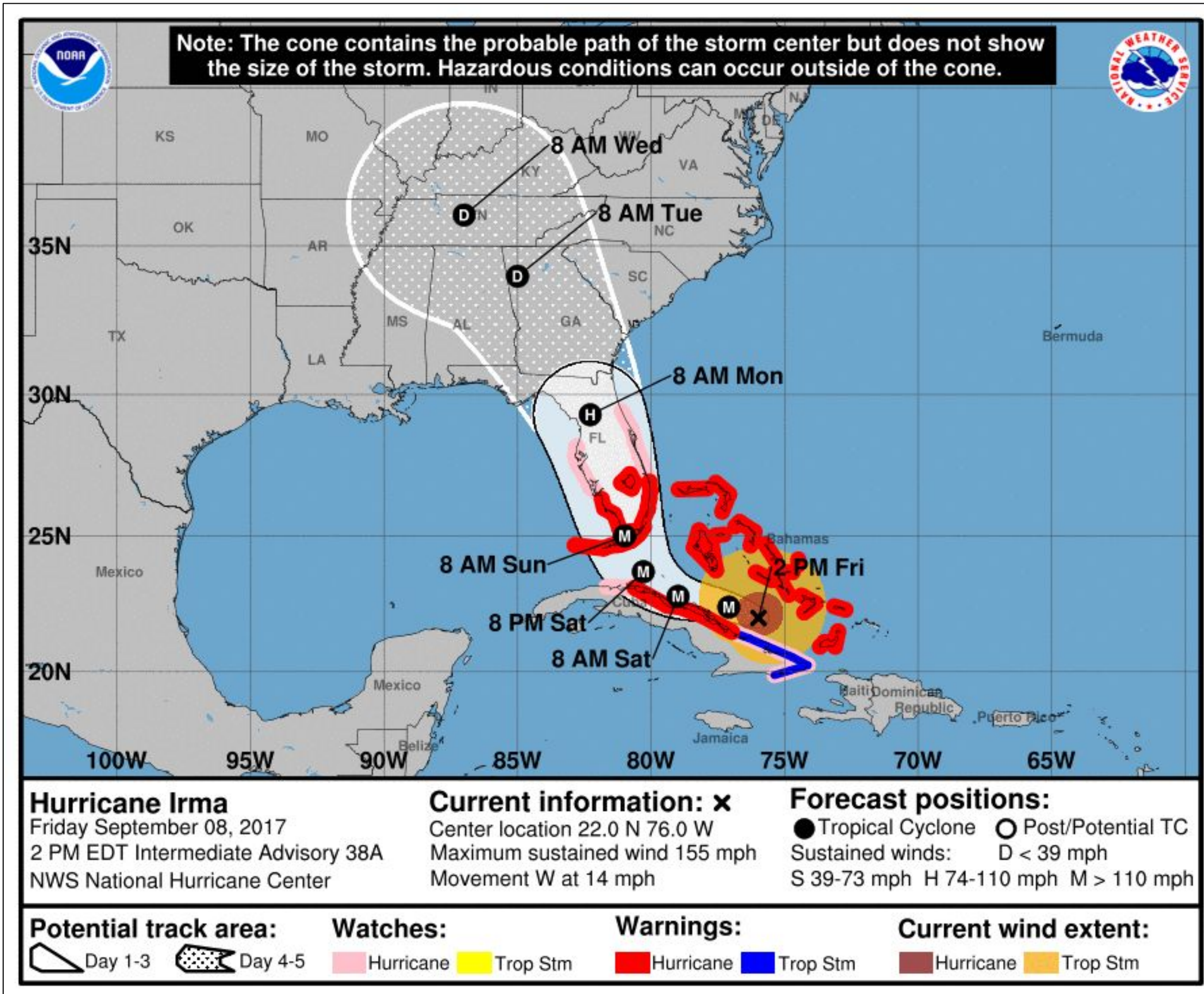


Situation Overview

Hurricane Irma



Miami/South
Florida
WEATHER OFFICE



- Irma continues to be a severe and extremely dangerous threat to South Florida
- Direct major hurricane landfall likely somewhere across South Florida this weekend
- Preparations to protect life and property should be completed by tonight!
- Take final shelter by early Saturday morning!

Do not focus on the exact track. Impacts can occur well outside the area enclosed by the cone.

Current Watches and Warnings



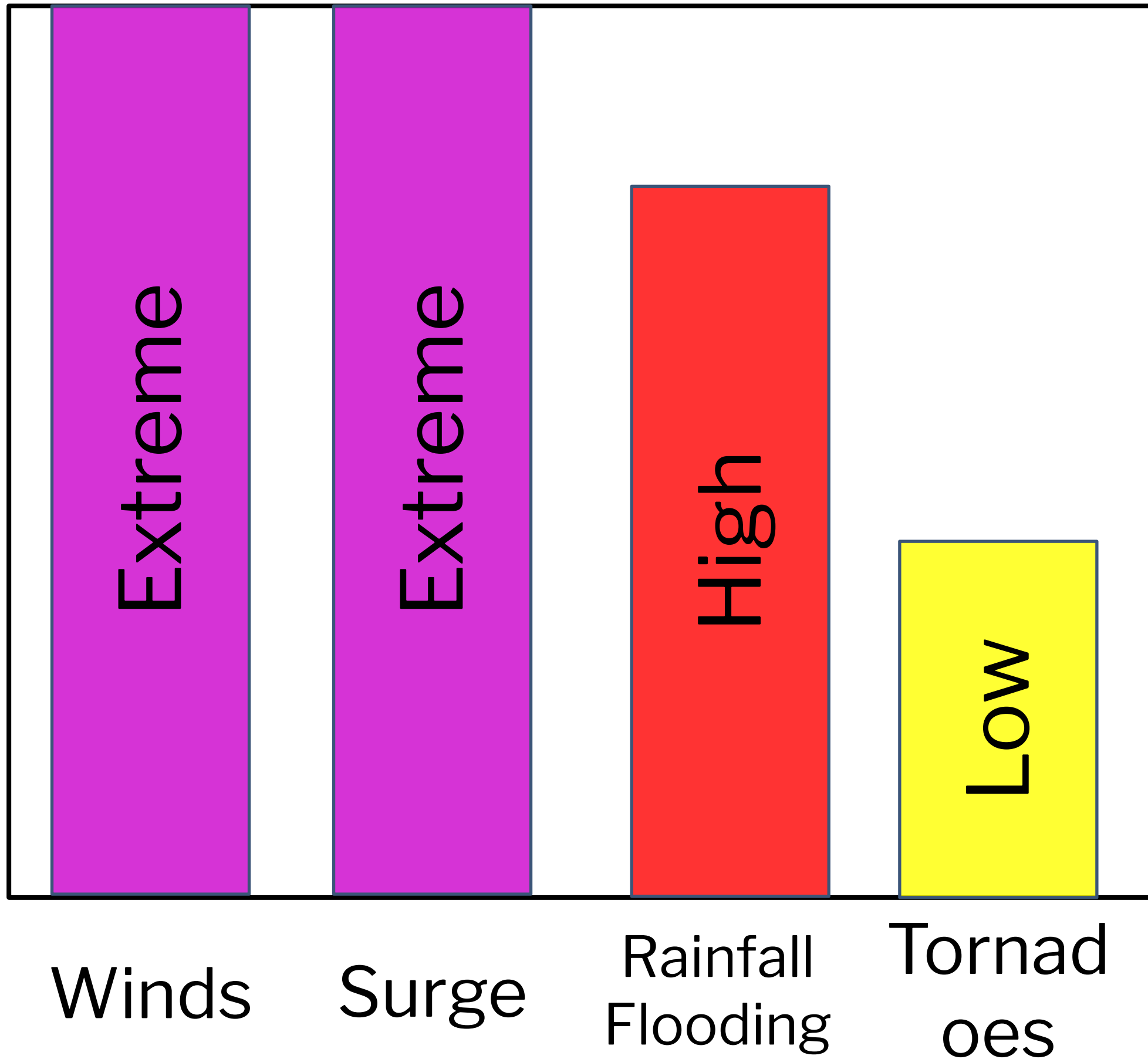
Miami/South
Florida
WEATHER OFFICE

Hurricane Irma

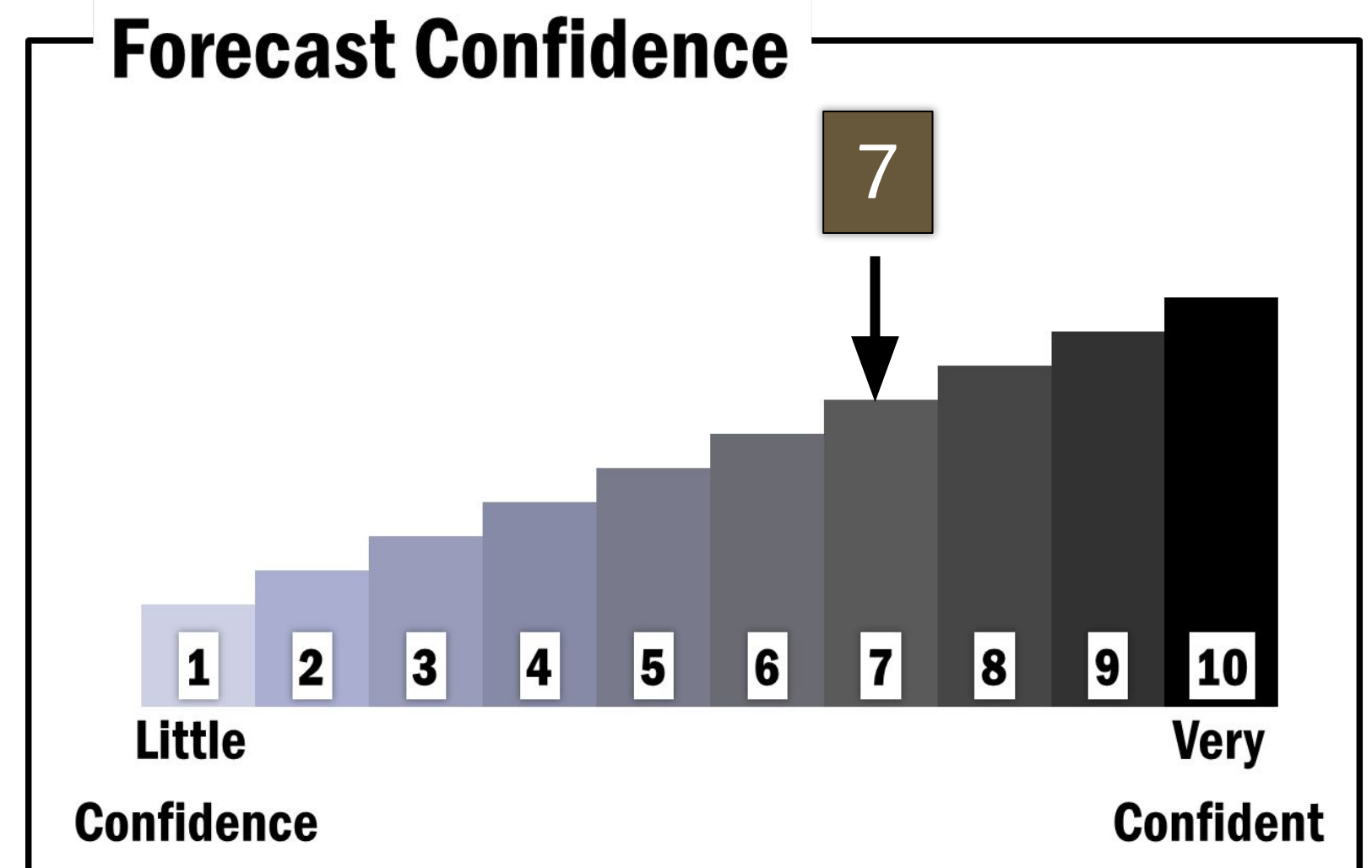
Hurricane Warning	Storm Surge Warning
<ul style="list-style-type: none">▪ Miami-Dade▪ Broward▪ Palm Beach▪ Collier▪ Hendry▪ Glades▪ Mainland Monroe	<ul style="list-style-type: none">▪ Coastal Portions of:<ul style="list-style-type: none">▪ Miami-Dade▪ Broward▪ Palm Beach▪ Collier▪ Mainland Monroe



Hurricane Irma



- Irma has the potential to bring devastating to catastrophic impacts to South Florida
- Potential for catastrophic major hurricane-force winds and likely life-threatening storm surge
- Flooding rainfall and tornadoes also threats
- This is a potentially deadly situation for all of South Florida!



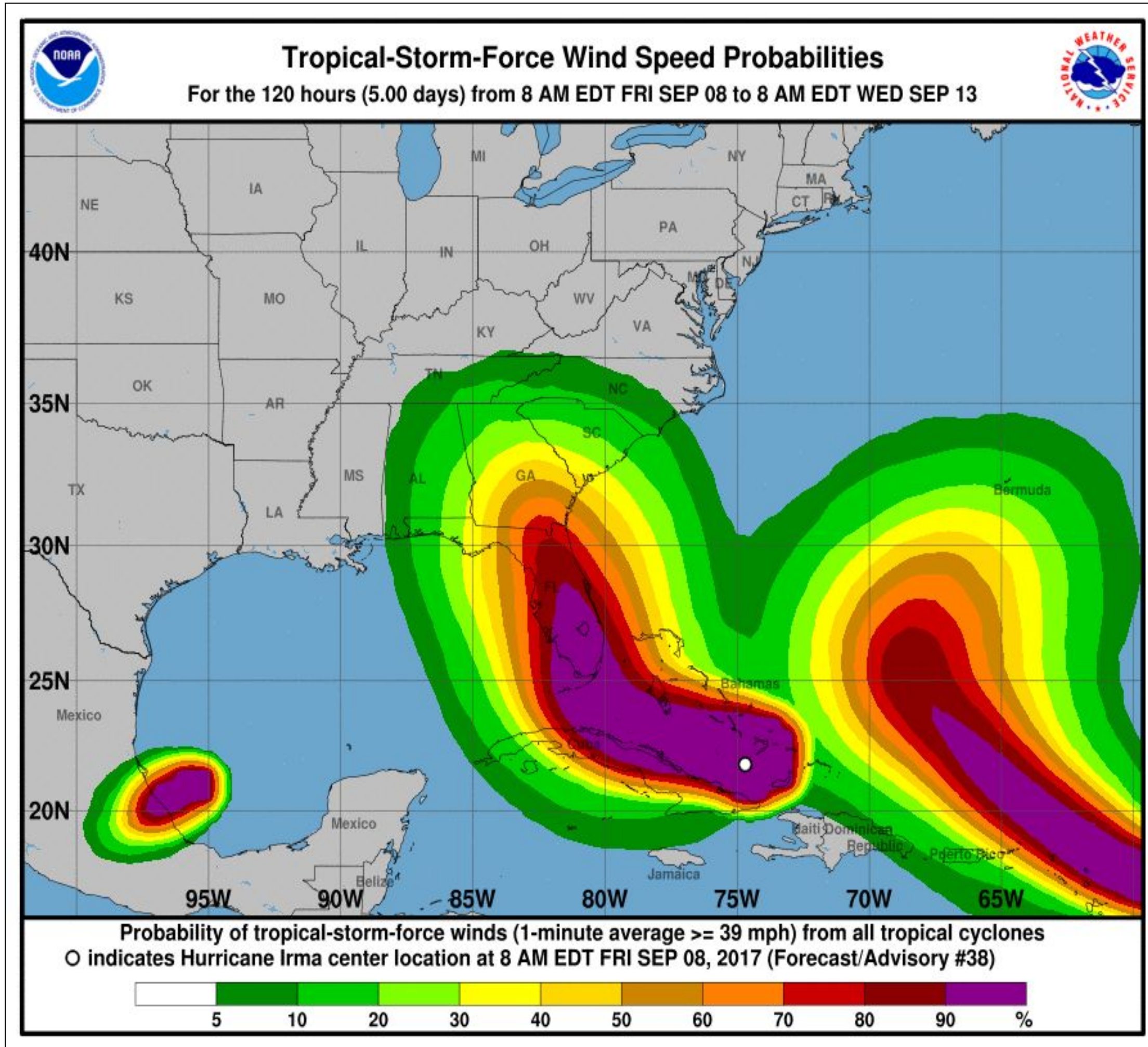
Threat level represents highest potential impact across all of South Florida and may not be representative of all locations

Wind Speed Probabilities



Miami/South
Florida
WEATHER OFFICE

Tropical Storm Force Winds



- Tropical Storm winds will happen for all of South Florida
- Breezy conditions today and into tonight

Timing

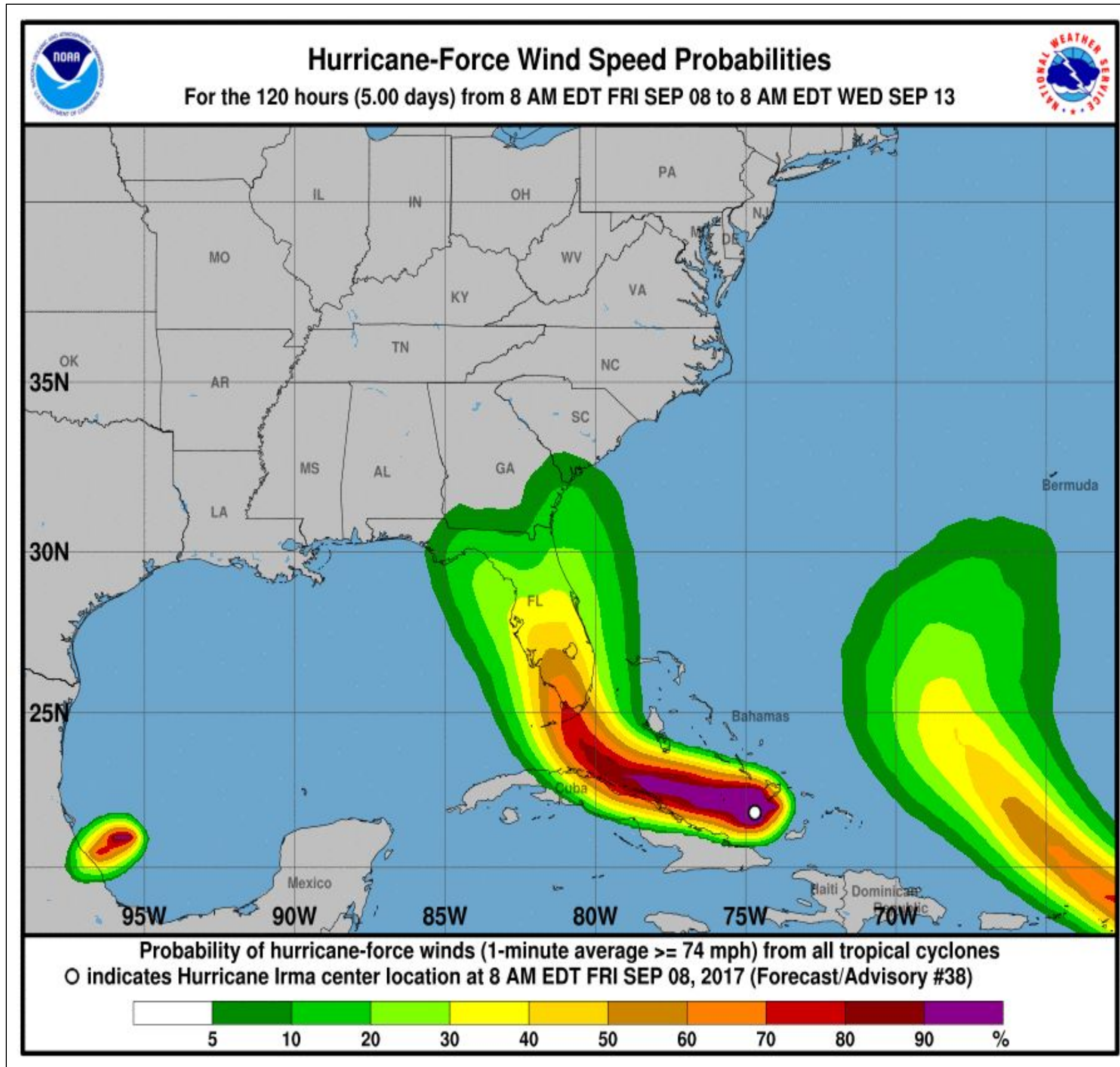
- Tropical Storm conditions could begin as early as Saturday morning
- Tropical Storm conditions could linger through Monday afternoon

Wind Speed Probabilities



Miami/South
Florida
WEATHER OFFICE

Hurricane Force Winds



Trends

- There is an increasing trend in the probabilities

Locations of Concern

- All of South Florida
- 50-70% chance of hurricane conditions occurring across most of South Florida
 - These values are extremely high given the current location of Irma

Timing

- Hurricane conditions could begin as early as midnight Sunday
- Hurricane conditions could linger through Monday

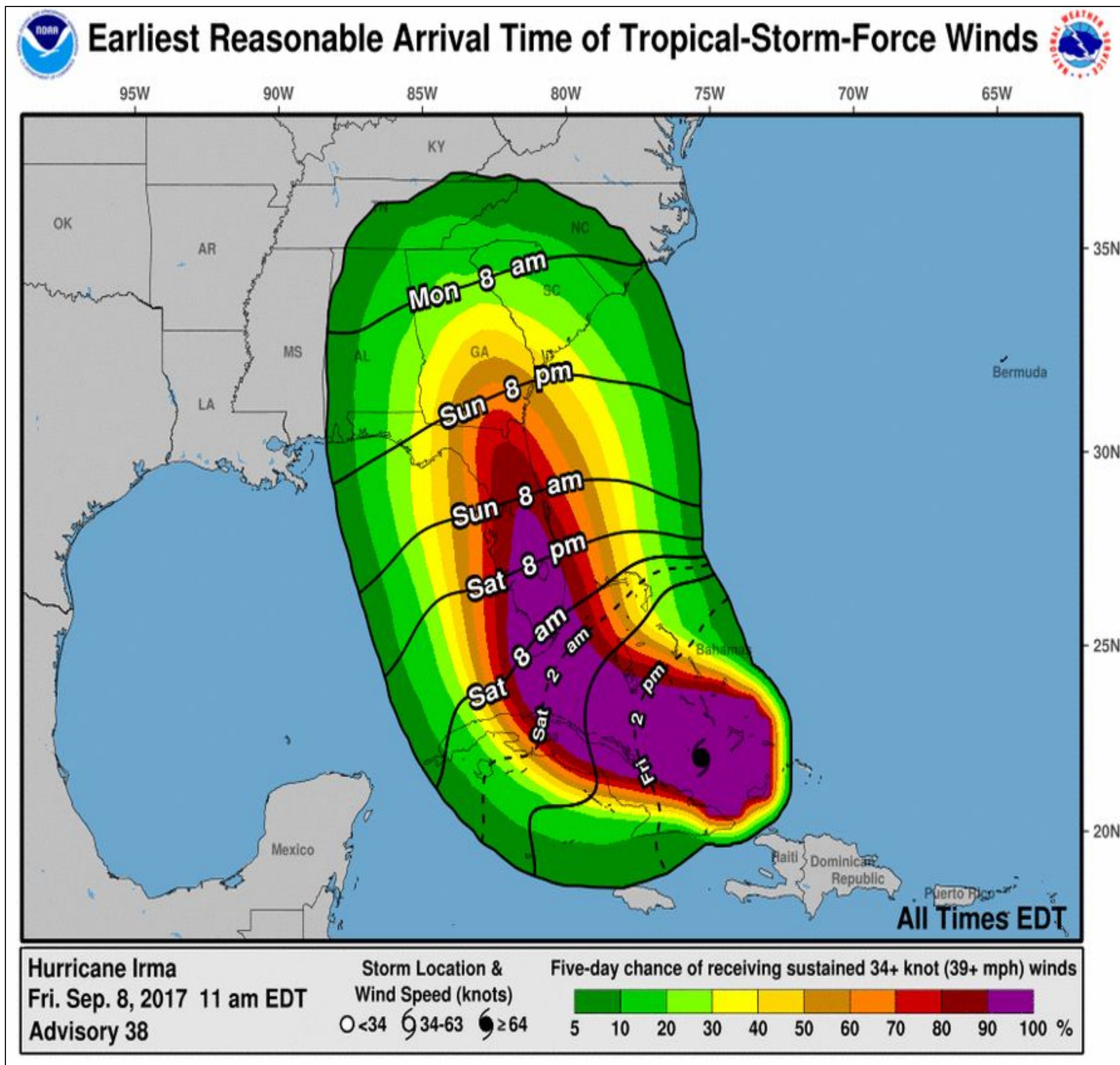
Earliest Time of Arrival



Miami/South
Florida
WEATHER OFFICE

Hurricane Irma

- The earliest reasonable time of arrival of Tropical Storm Force winds for South Florida is Saturday morning
- However, the most likely time South Florida could see Tropical Storm Force winds will be by Saturday evening

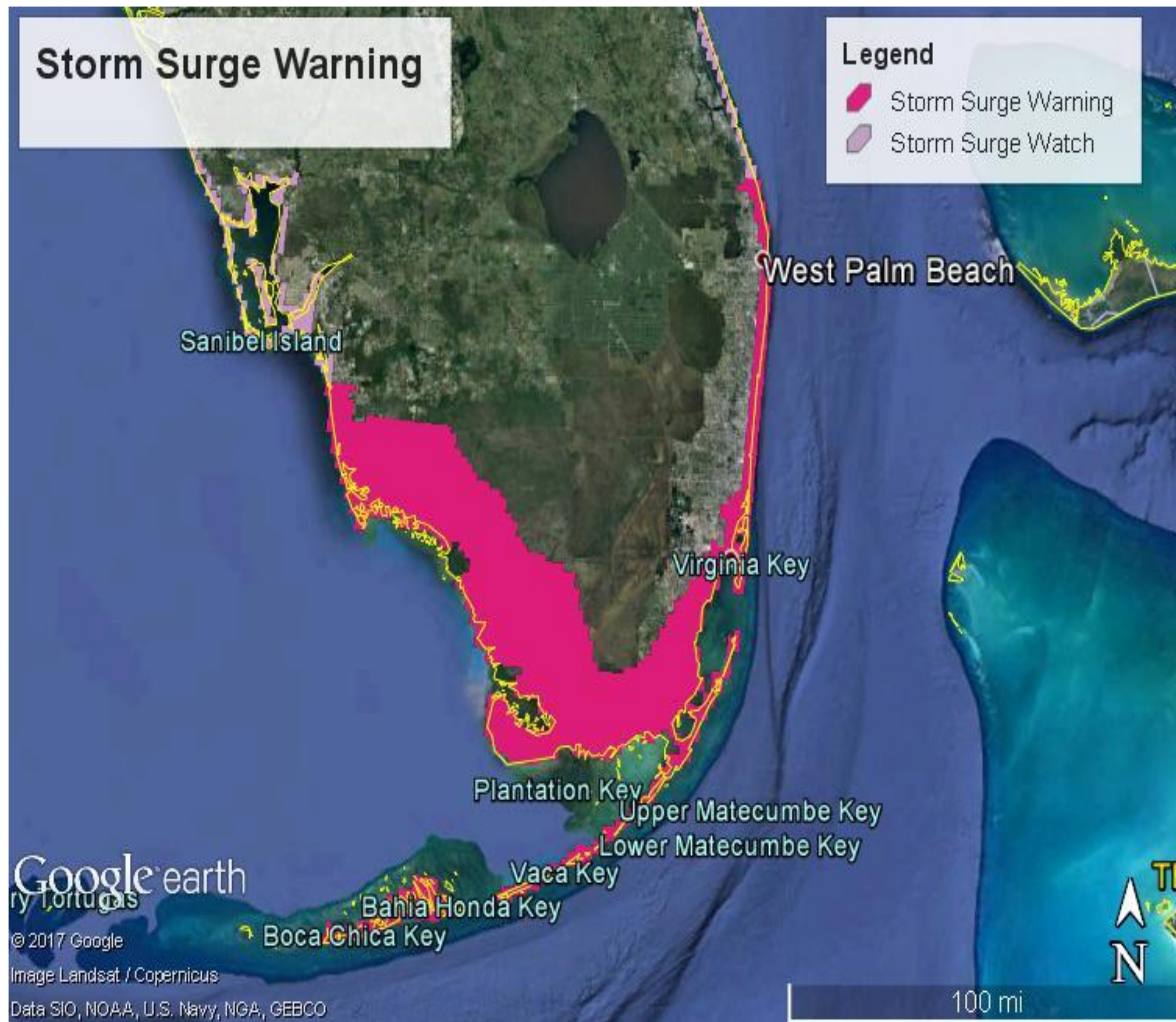


Storm Surge Warning

Hurricane Irma



Miami/South
Florida
WEATHER OFFICE



**Storm Surge Warning
in effect for all coastal
and storm surge
prone areas of South
Florida**

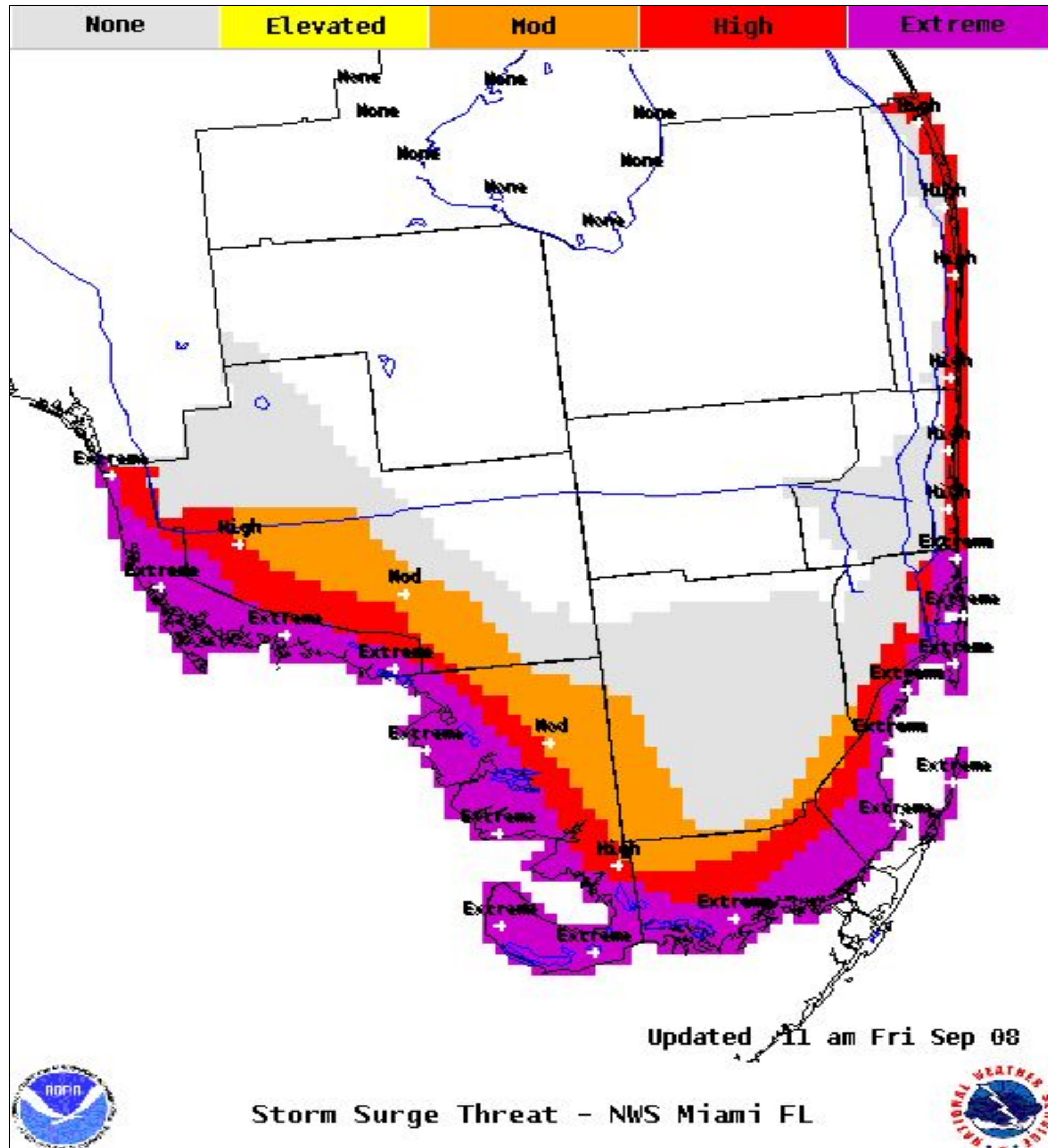
**Life-threatening
inundation from storm
surge likely
somewhere within the
warning within the
next 36 hours**

Potential Storm Surge



Miami/South
Florida
WEATHER OFFICE

Hurricane Irma Impacts



Locations of Concern

- All coastal and storm surge prone areas of South Florida

Timing

- Beginning Saturday evening

Potential Impacts

- Widespread deep inundation, with storm surge flooding greatly accentuated by powerful battering waves
- Structural damage to buildings, with many washing away
- Near-shore escape routes & secondary roads washed out or severely flooded
- Flood control systems and barriers may become stressed

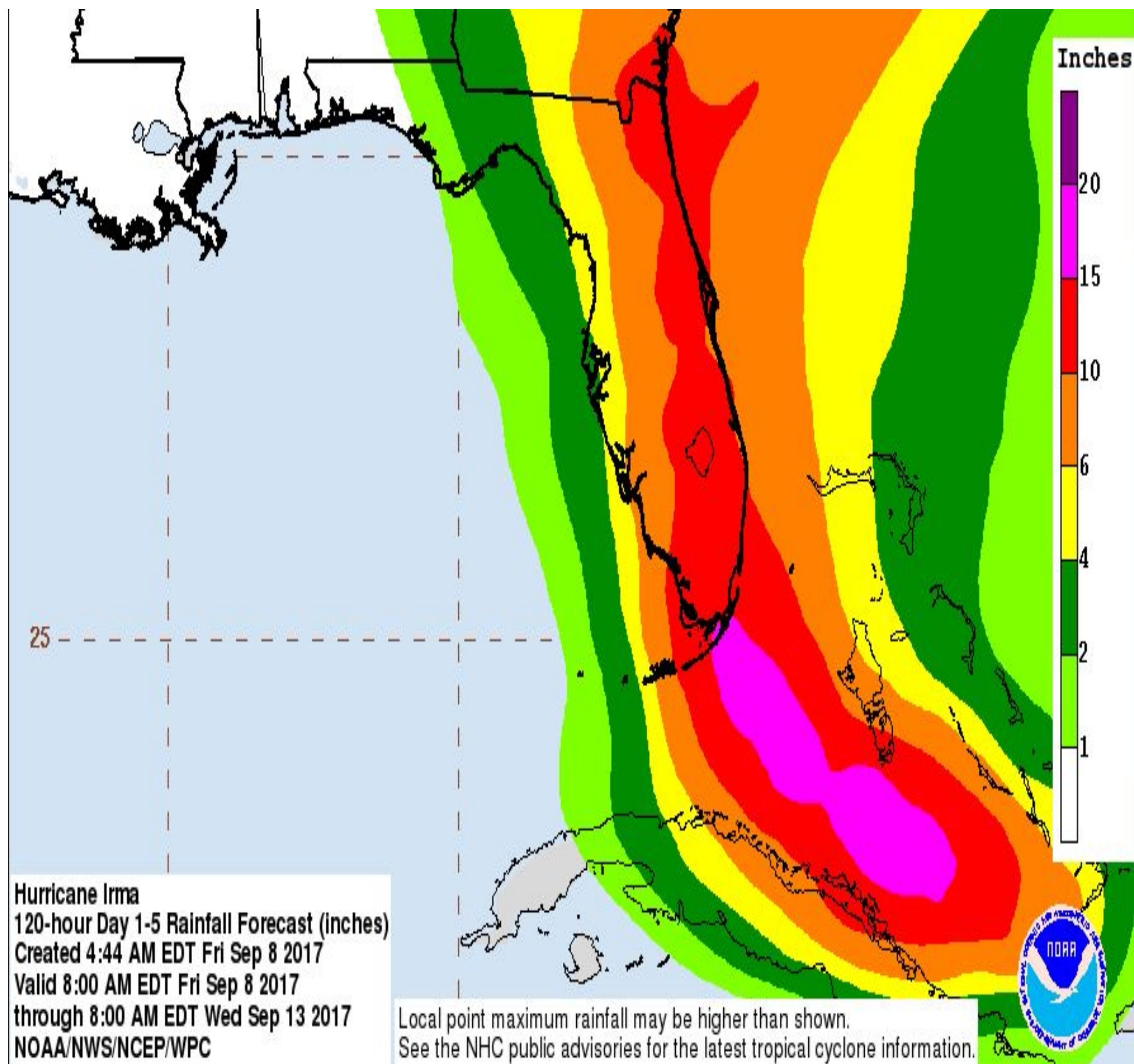
Expected Storm Total

Rainfall

Forecast Valid Through Wednesday, September 13



Miami/South
Florida
WEATHER OFFICE



Locations of Concern

- All of South Florida

Timing

- Beginning Saturday

Amounts

- 10 to 15 inches, with isolated amounts up to 20 inches
- Highest totals currently expected across eastern areas

Note: Locally Higher Amounts Possible

Summary

Hurricane Irma



Miami/South
Florida
WEATHER OFFICE

- Severe to catastrophic impacts from Hurricane Irma likely across South Florida:
 - Destructive to catastrophic winds
 - Life-threatening storm surge
 - Flooding rains
 - Tornadoes
 - Dangerous surf and life-threatening rip currents
- Direct major hurricane landfall likely somewhere across South Florida
- Lake Okeechobee system will need to be monitored for potential flooding
- The time window of worst hurricane conditions expected to be late Saturday night through Monday morning
 - More accurate times will be provided for the next briefing
- Preparations to protect life and property should be completed by tonight!

3/21/2024 4:13 PM

www.weather.gov/miami

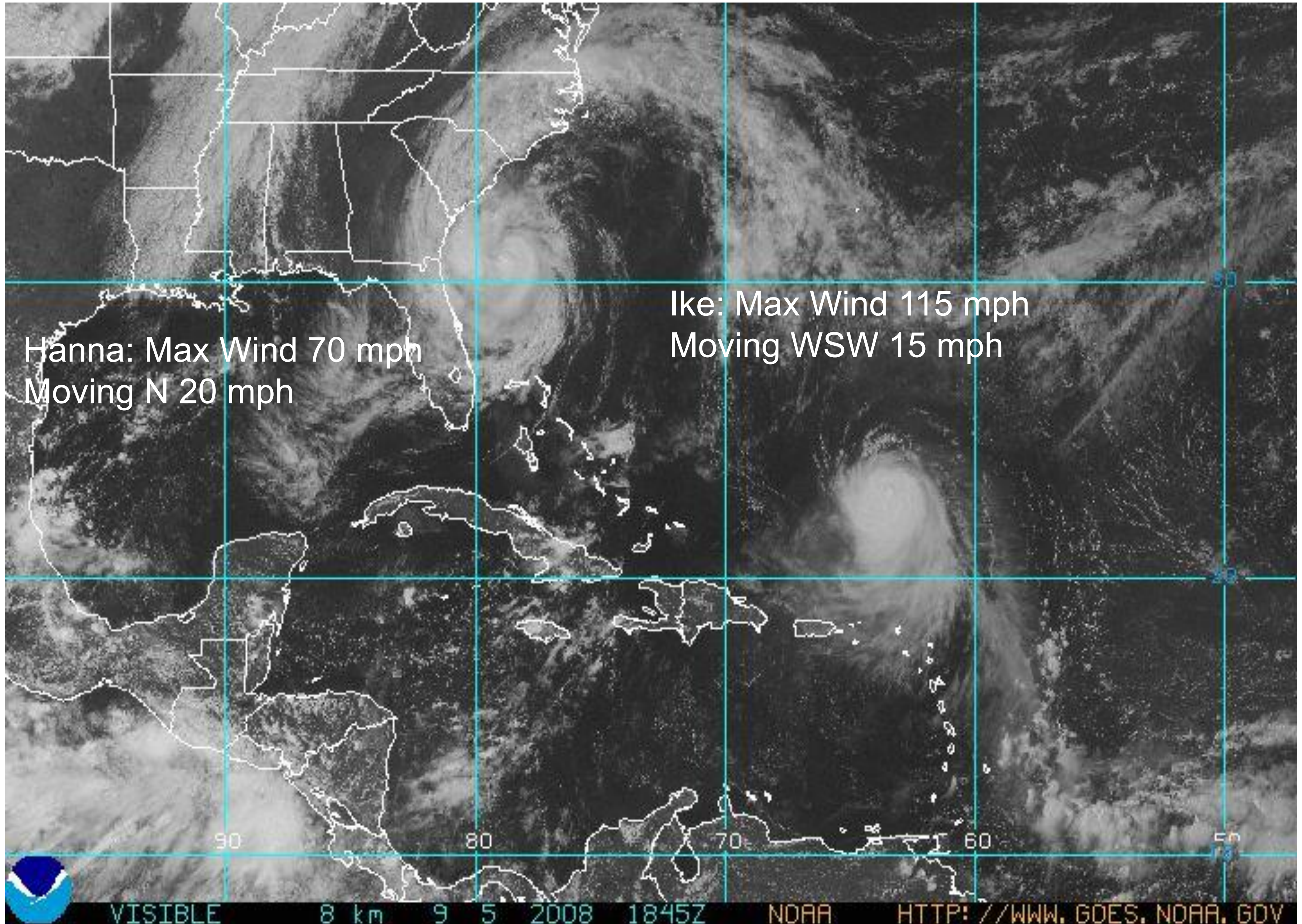
Briefing Examples

Example #2

GOOD AFTERNOON!

NWS Miami

**Hurricane Ike Webinar/Conference
Call**

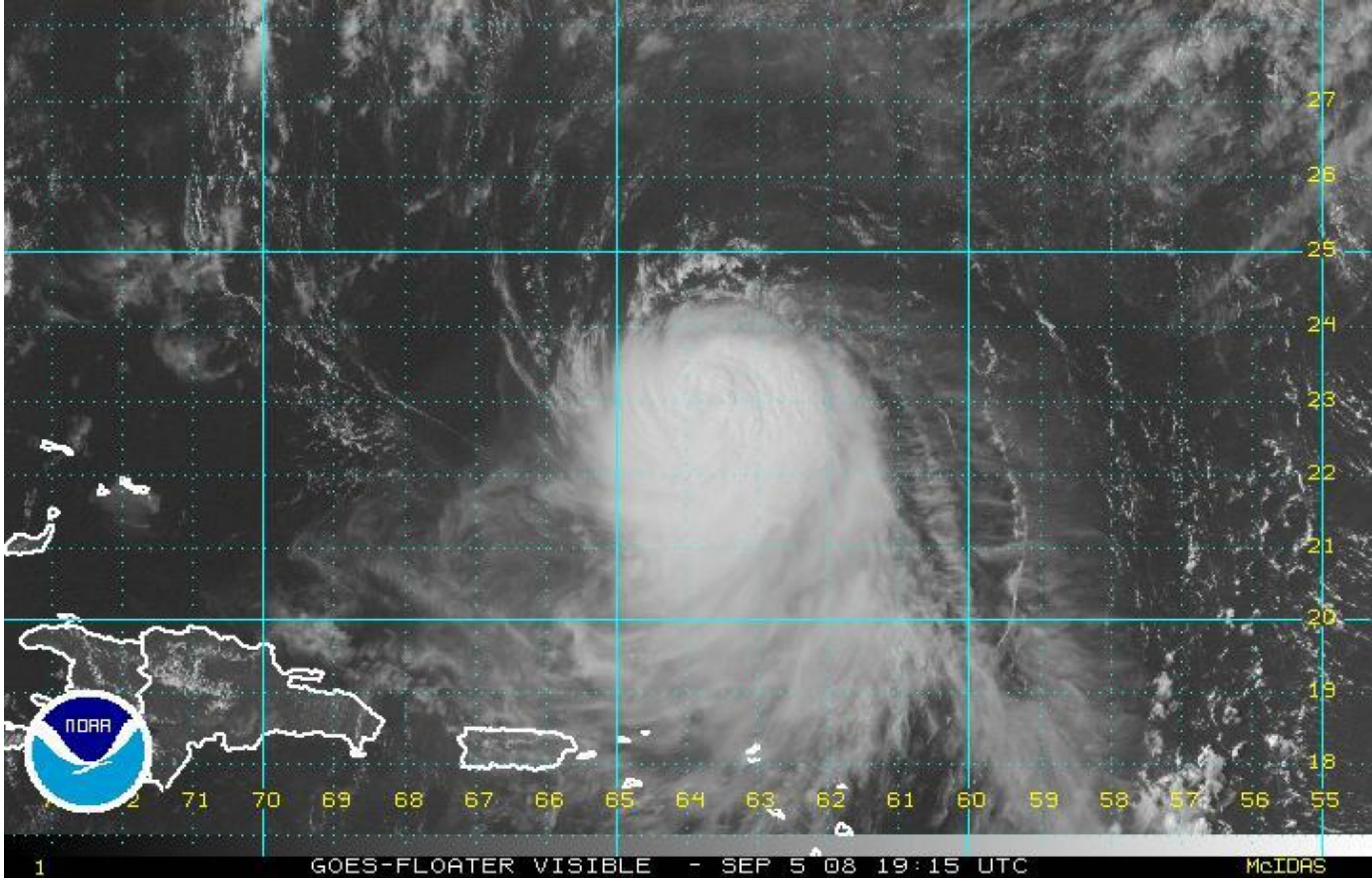


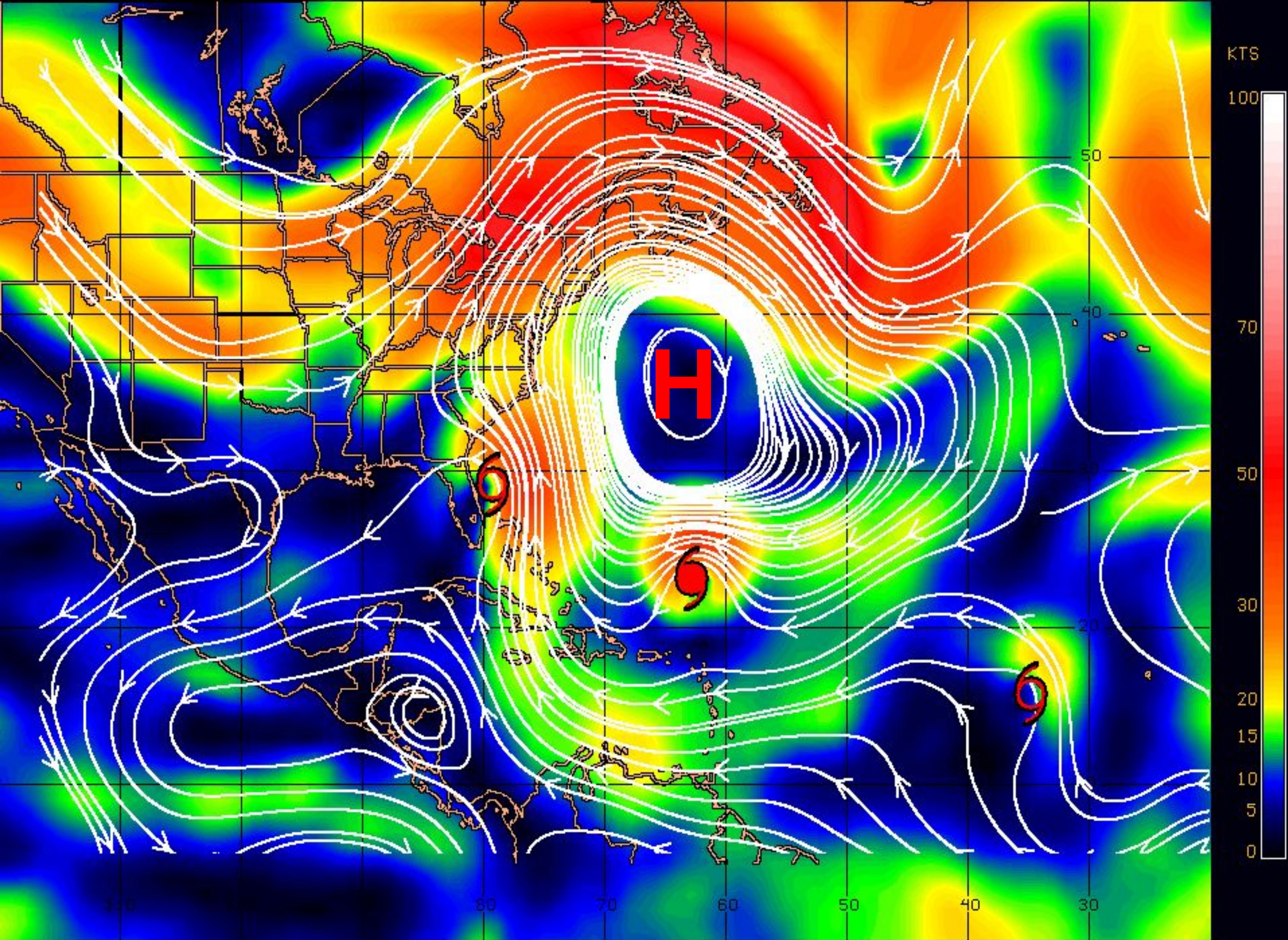
Hanna: Max Wind 70 mph
Moving N 20 mph

Ike: Max Wind 115 mph
Moving WSW 15 mph



Major Hurricane Ike





CIMSS ENV STEERING PRODUCT: 300-850 HPA LAYER (FOR TC MSLP RANGE: 950-969 HPA) 1500 UTC 05SEP08

IKE # 18 - Assuming AVERAGE FORECAST ERROR - the EYE should track in white cone next 3 days / grey 4-5 days

LATEST Advisory
IKE # 18
Fri 09/05/08 11E
(15Z)-Initial Posit.
23.20 N 62.70 W
105kt (120mph)
Saf Sim Category 3
Movg 14kt (16mph)

TIME- TIME+ AUTO

Change -
STORM PREV NEXT
ADVY ADVY

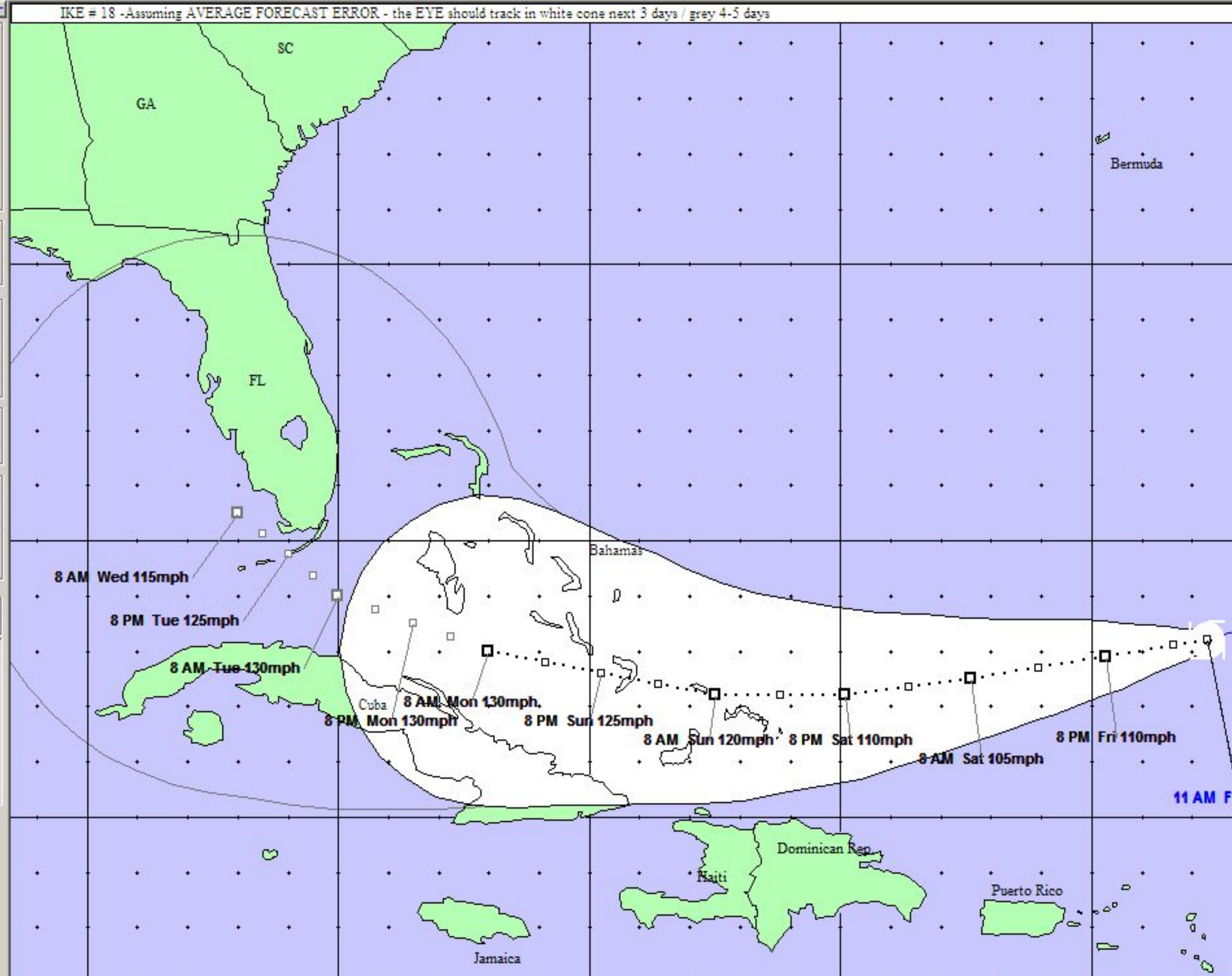
Map -

Mode - Error Swath

Other..

Overlay List...OFF
Storm Advy

- Floyd 1999
- Ike 2008
- Hanna 2008
- Gustav 2008
- Fay 2008
- Herb 2008
- Katrina 2005
- Gert 2005

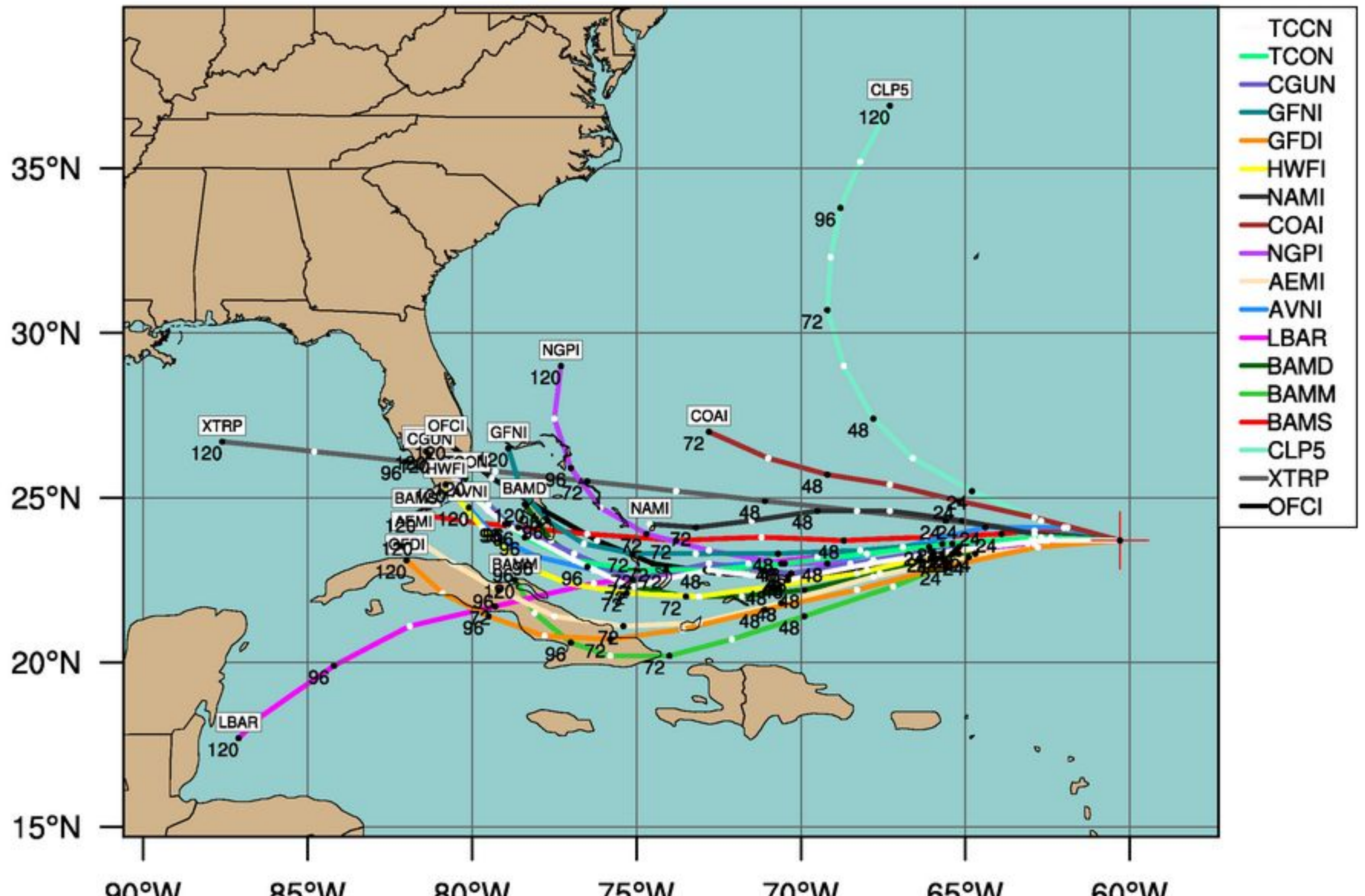


MAJOR HURRICANE IKE (AL09)

Early-cycle track guidance valid 0600 UTC, 05 September 2008

Current Intensity: 115 kt

Current Basin: North Atlantic

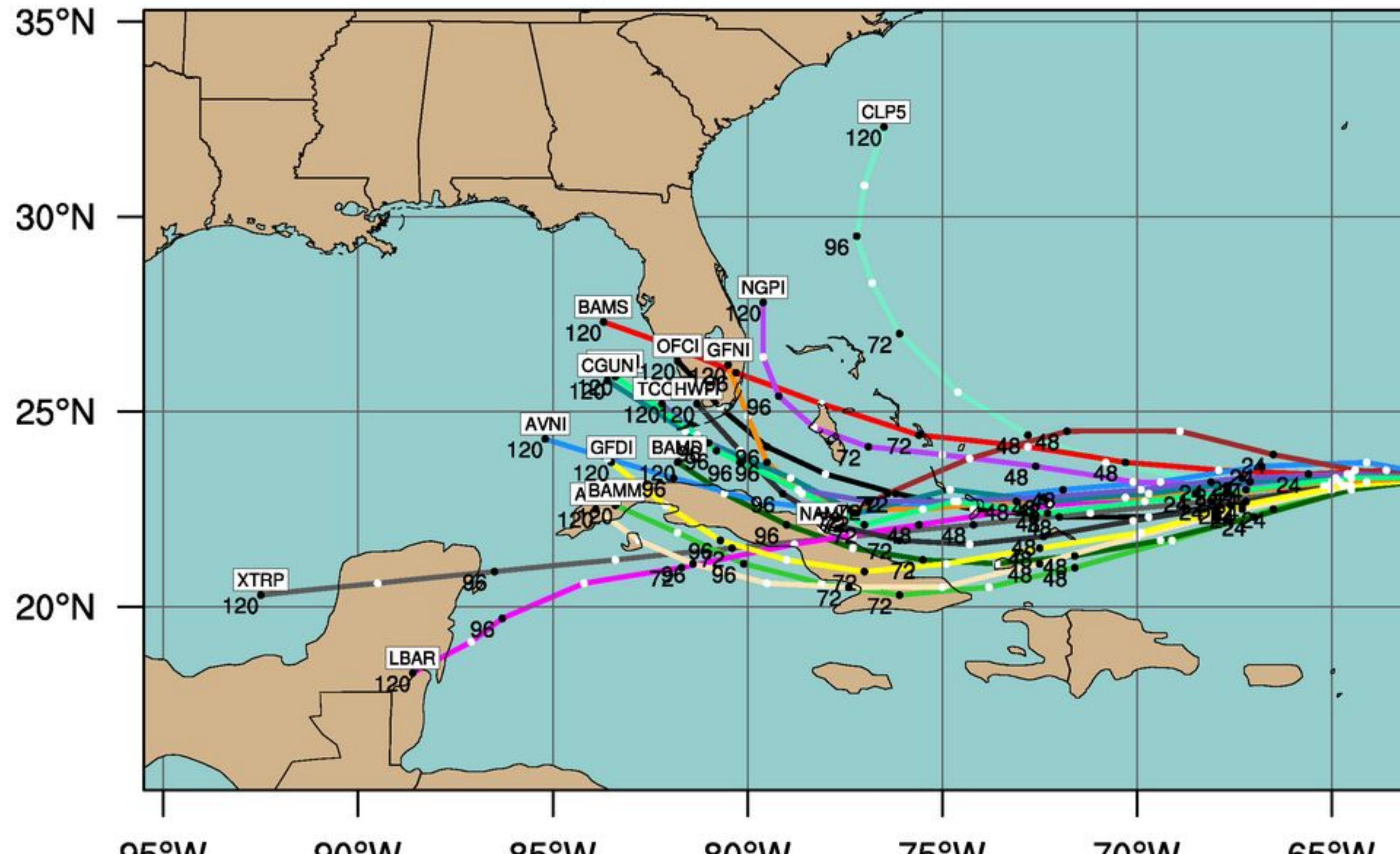


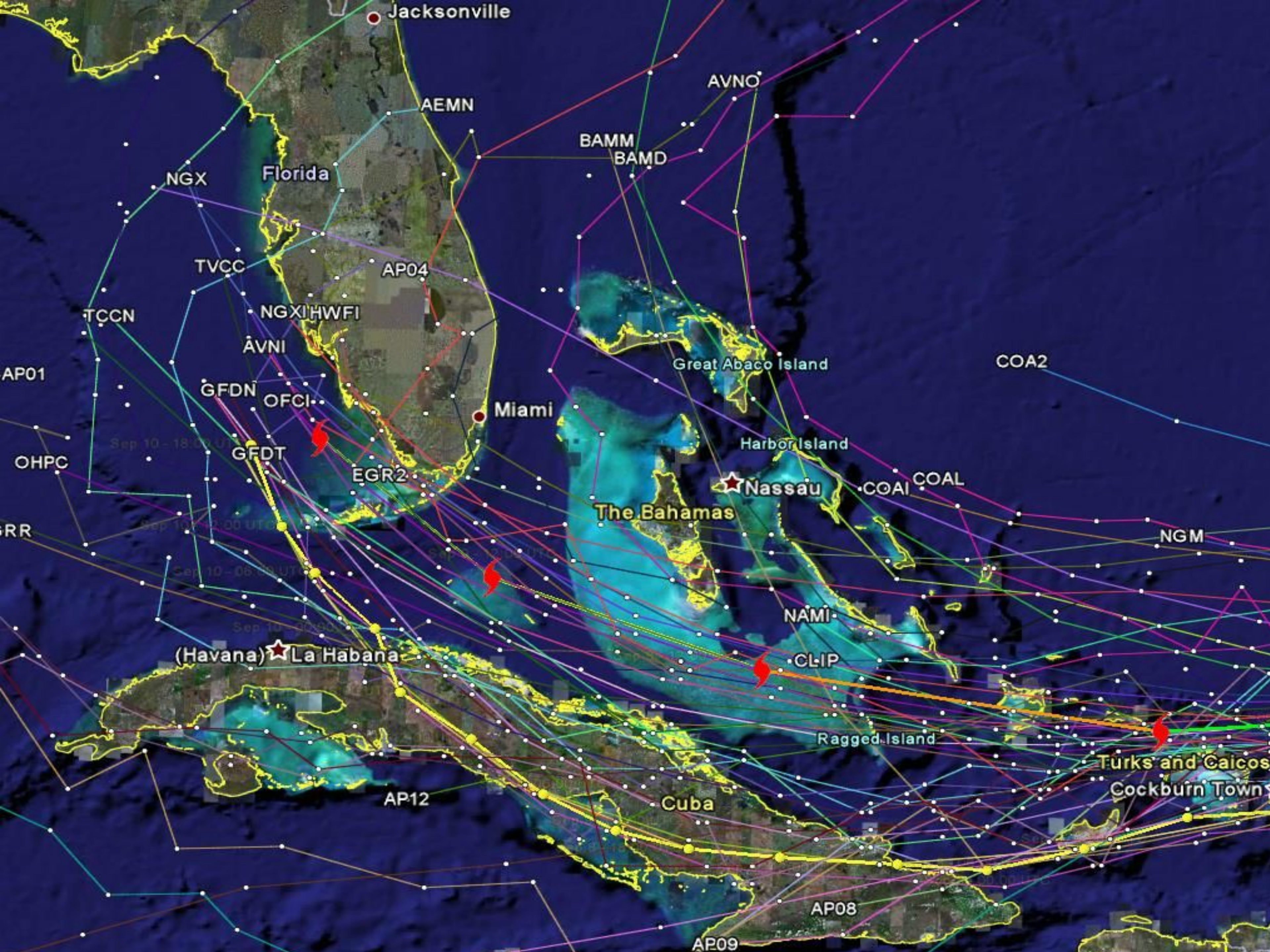
MAJOR HURRICANE IKE (AL09)

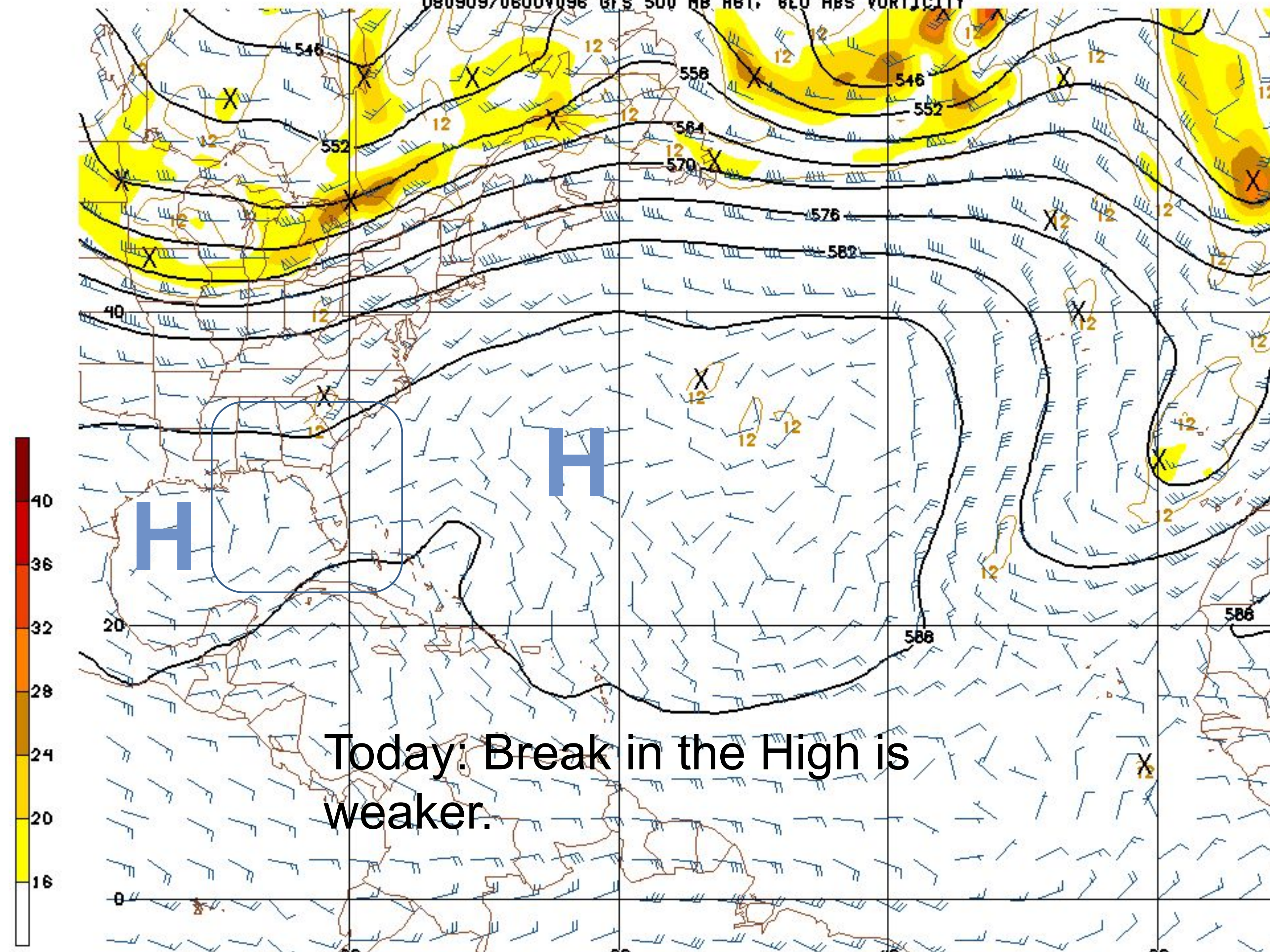
Early-cycle track guidance valid 1200 UTC, 05 September 2005

Current Intensity: 105 kt

Current Basin: North Atlantic







Today: Break in the High is weaker.

Notes/Potential Timing

- Based on present forecast, TS winds could be as early as Monday night/early Tuesday.
- This timing would mean a possible Watch Sunday afternoon/evening?
- Day 4/5 forecast prone to large errors in location, timing and strength.
- Present trends continue to indicate that turn to the north over Bahamas becoming LESS likely, with a track farther west MORE likely.
- Ike will likely slow down, perhaps considerably as it approaches area.

Note on Forecast Points

- Some media indicating Ike “heading for Keys”. Reminder that it’s much too early to focus on exact track of center of storm which will have tropical storm force winds extending out well over 100 miles.
- Main emphasis is that even Category 2 and 3 hurricanes can be extremely dangerous. Too much focus in media on exact category of storm.