



Department of Meteorological Services

TROPICAL CYCLONE PRESENTATION

BY
MERCY TSHWENYEGO

04-09/11/2019

INTRODUCTION

- INTRODUCTION
- PROBLEM STATEMENT
- TOPOGRAPHY OF AREA OF INTEREST
- LITERATURE OF THE PROGRESSING OF THE TROPICAL CYCLONE

Department of Meteorological Services

INTRODUCTION

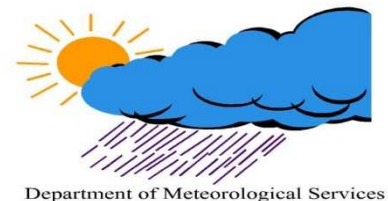
- ▶ Tropical cyclones are non frontal systems which occurs during summer hemisphere in tropical waters.they have certain characteristics for their formation such as sea surface temperatures of $\geq 27^{\circ}\text{C}$,near vicinity of ITCZ where cyclonic vorticity is present and near 5° latitude of N/S hemisphere.they progression is south-westward direction in Southern hemisphere.they usually dissipate when reaching the land due to insufficient moisture

.

Department of Meteorological Services

INTRODUCTION CONTINUATION

- Tropical cyclones have stages in their formation, thus, tropical depression when winds are ≤ 34 knots, tropical storm from 34-63 knots and tropical cyclone when winds are ≥ 64 knots

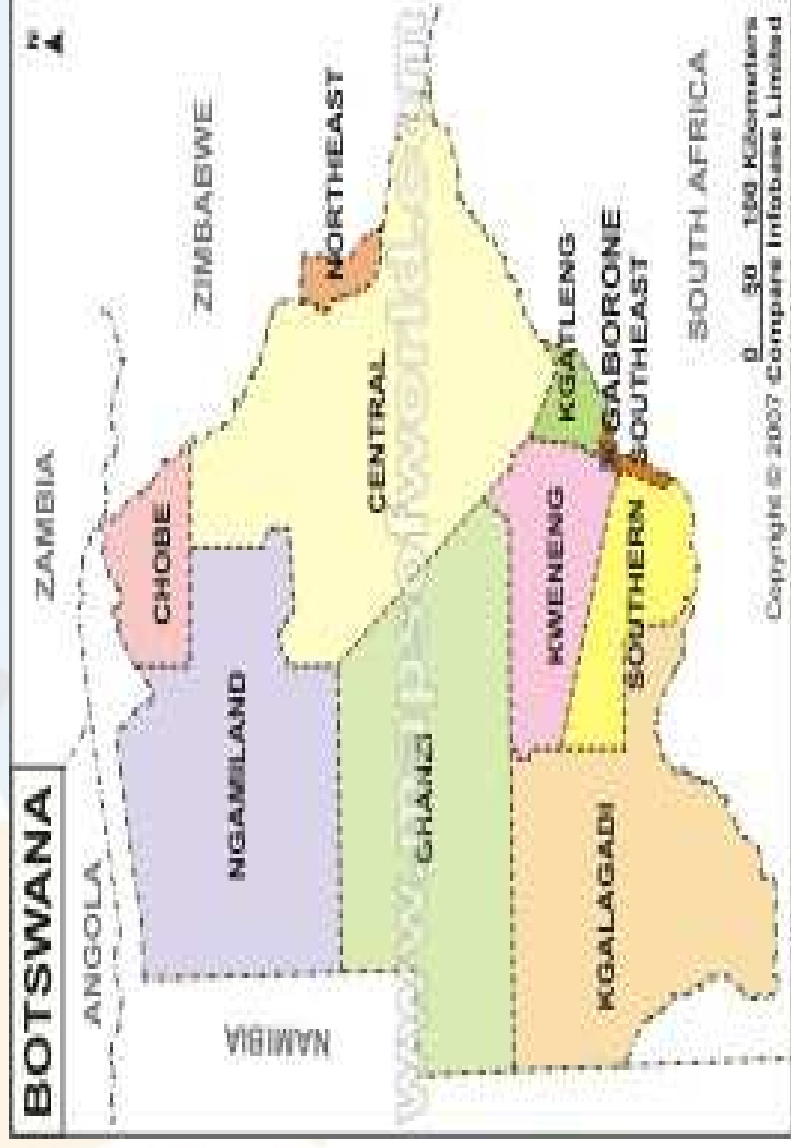


Problem Statement

- ▶ Tropical cyclones are more evident in tropics and they can be both advantageous and disadvantageous.
- ▶ The positive thing about TCs is that, they bring a lot of precipitation and can be beneficial to socio-economics
- ▶ The negative impact is that they are destructive, such as bringing floods, impairing food security and other socio-economic activities

Department of Meteorological Services

TOPOGRAPHY OF AREA OF INTEREST



TOPOGRAPHY

- ▶ Botswana lies between latitude 18° and 27° south of equator and longitude 20° and 29° east of green-wich meridian.
- ▶ It is a landlocked country bordered by Namibia in the west, Zimbabwe in the north east, Zambia in the north and South Africa in the south
- ▶ It has an area of 582,000 square kilometers
- ▶ It has a desert characterised by sparsely shrubs, short grass and sand dunes in the west and vast land dominant with dry savanna grass ,densely acacia trees in the eastern plains.



Department of Meteorological Services

TROPICAL CYCLONE IDAI AND KENNETH PROGRESSION

- Tropical cyclone IDAI had advanced south westwards on the Mozambiquean coast on the 14th March 2019.
- Tropical cyclone KENNETH had advanced south westwards on the Mozambiquean coast on the 21th APRIL 2019.

Department of Meteorological Services

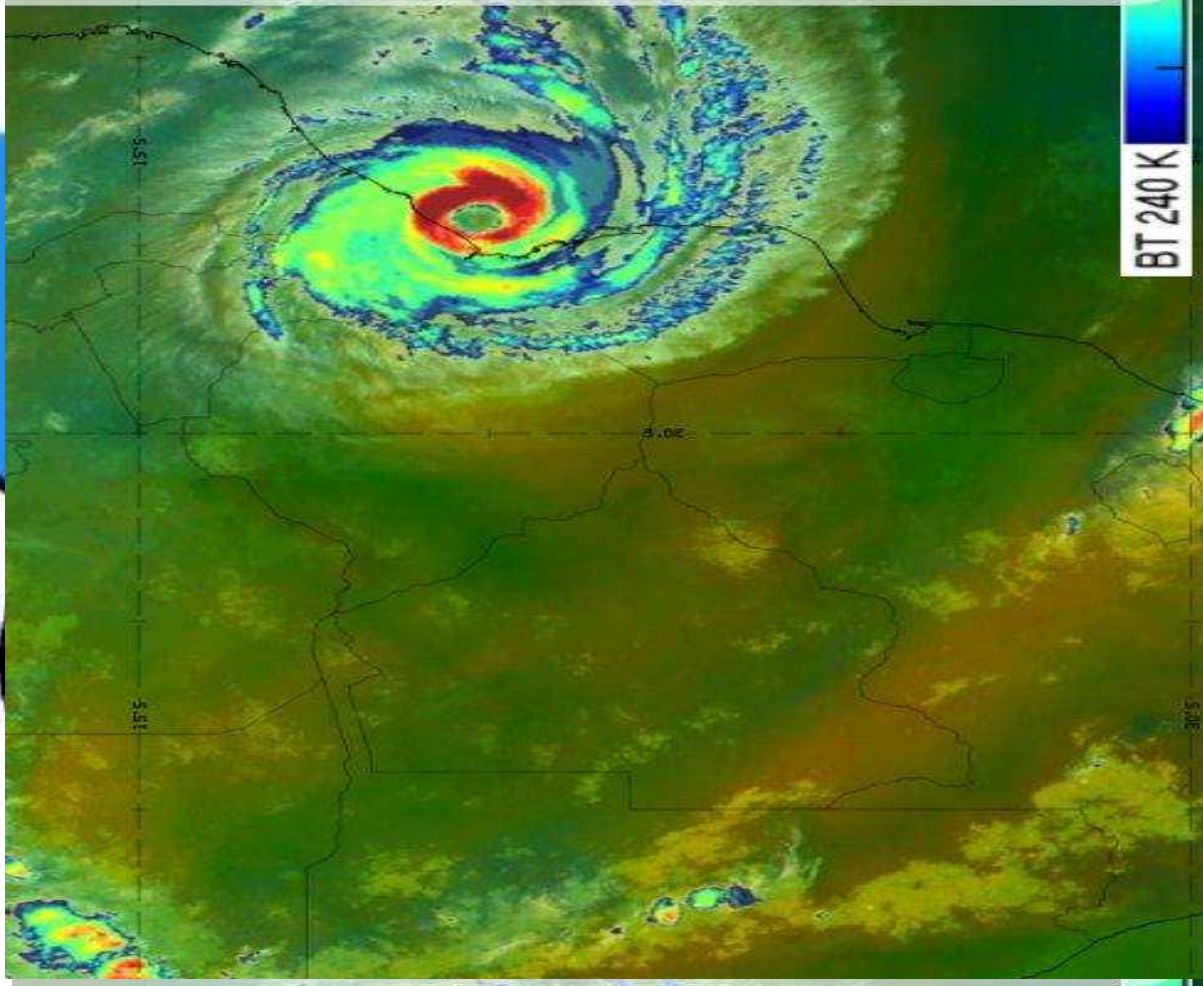
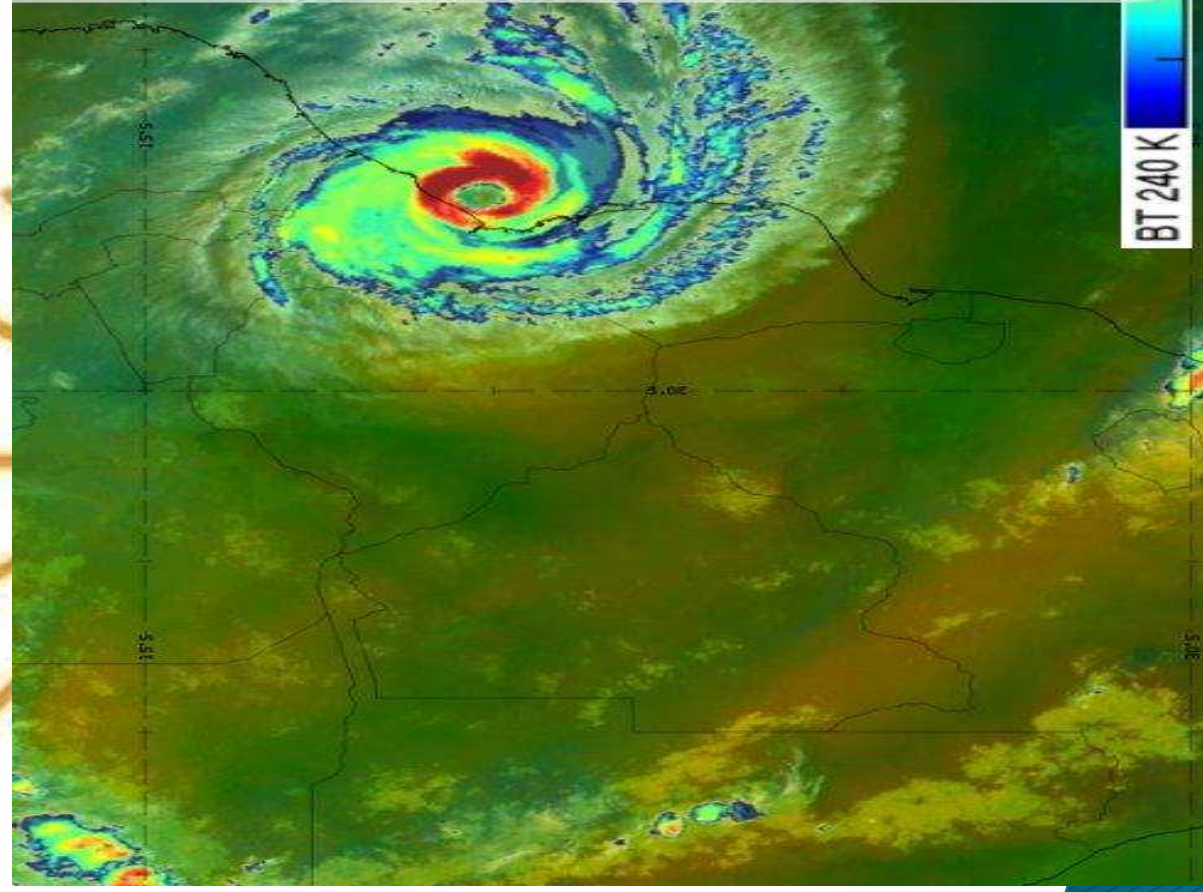
IMPACTS OF TROPICAL CYCLONE

- The two Tropical cyclones Idai and Kenneth reached inland but, did not affect Botswana
- They deprived the country of moisture as their trajectory was northwards

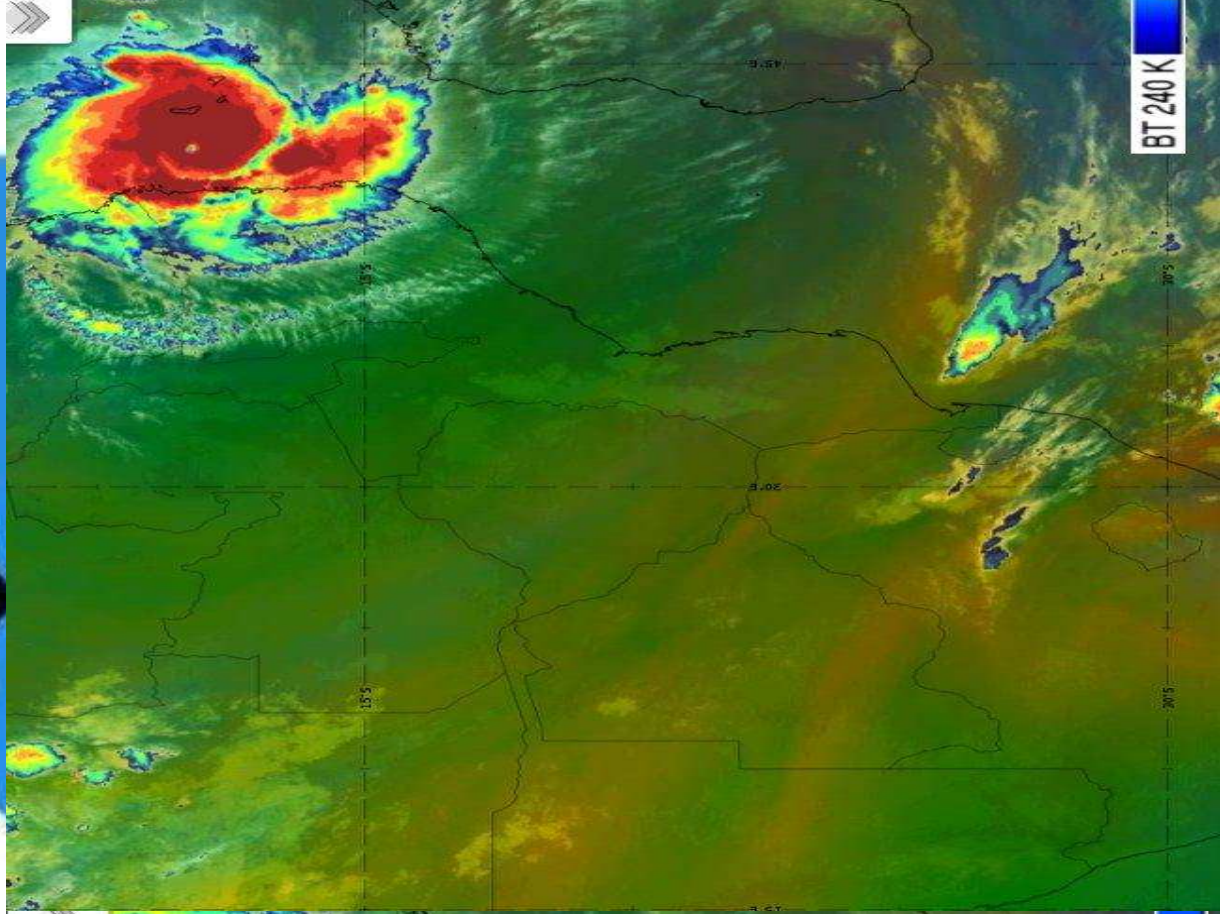
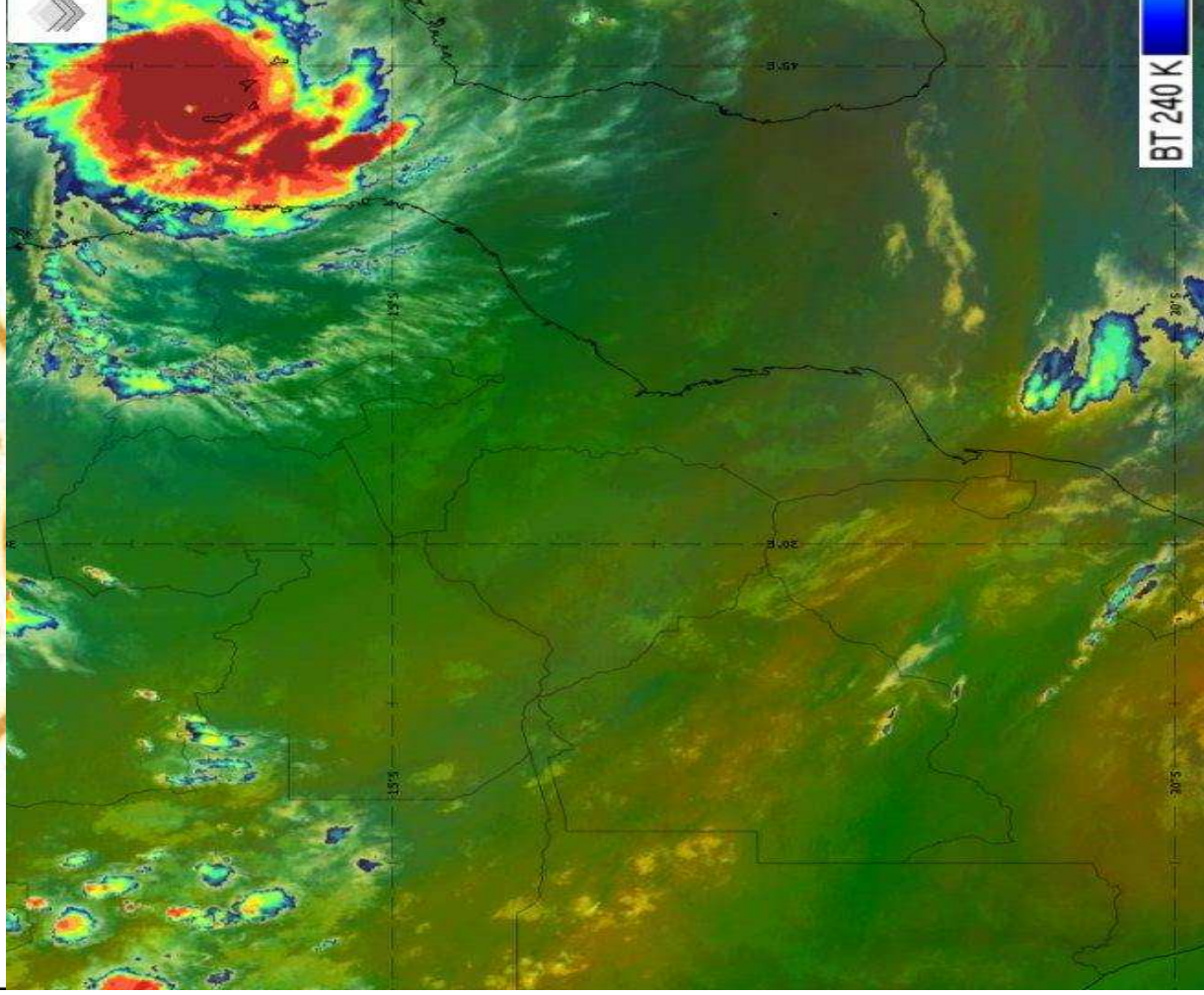


Department of Meteorological Services

TROPICAL CYCLONE IDAI



TROPICAL CYCLONE KENNETH



CONCLUSION


We had several tropical cyclones inclusive of Idai and Kenneth which reached in-land, all of them did not benefit Botswana.

However it is important to always keep track of their movement to ensure that early warning is issued to alert the public for their safety.

Department of Meteorological



Department of Meteorological Services



Thank You for your attention



Department of Meteorological Services