

An aerial photograph of a tropical cyclone, showing a well-defined eye and spiral cloud bands over a dark ocean. A white rectangular box is superimposed on the upper left portion of the image, containing the title text.

# **TROPICAL CYCLONE RELATED SERVICES**

**A presentation by Laurent Valentin  
Assistant Forecasting Officer  
Seychelles Meteorological Authority**



A satellite image of Earth from space, showing a large, swirling hurricane over the ocean. The hurricane has a distinct eye and spiral cloud bands. The surrounding ocean is dark blue, and landmasses are visible in the lower left and right, showing green vegetation and brown terrain. The Earth's curvature is visible on the right side.

What services do we provide  
as the NMHS of Seychelles?

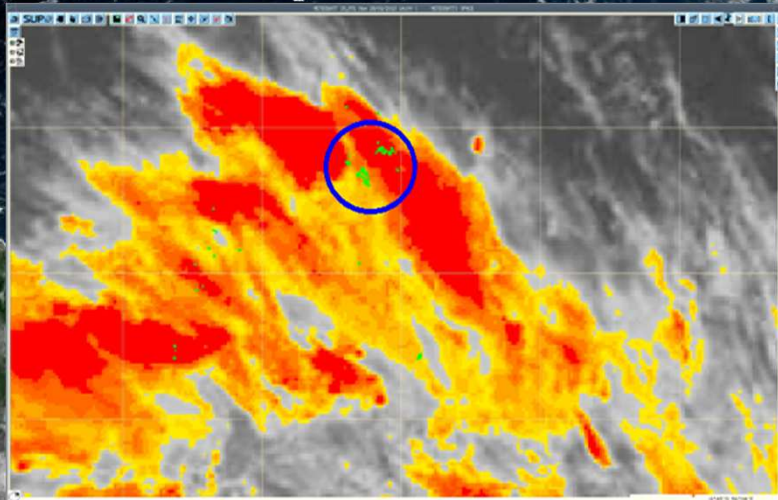
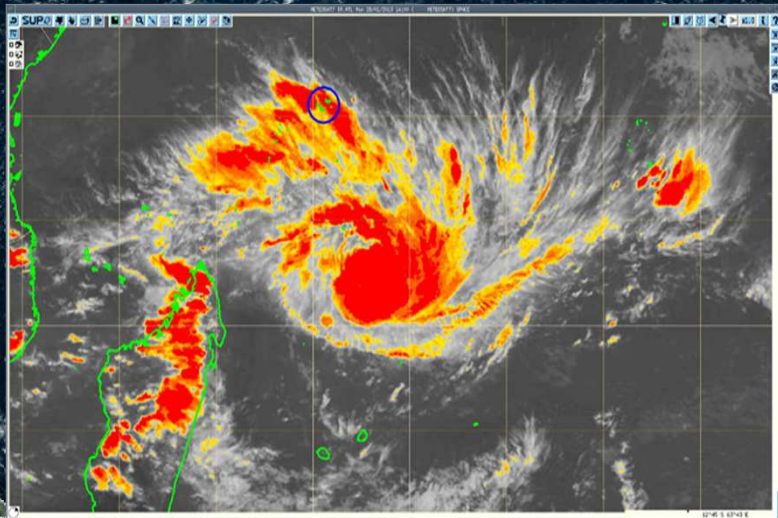


# 1. Early Warning

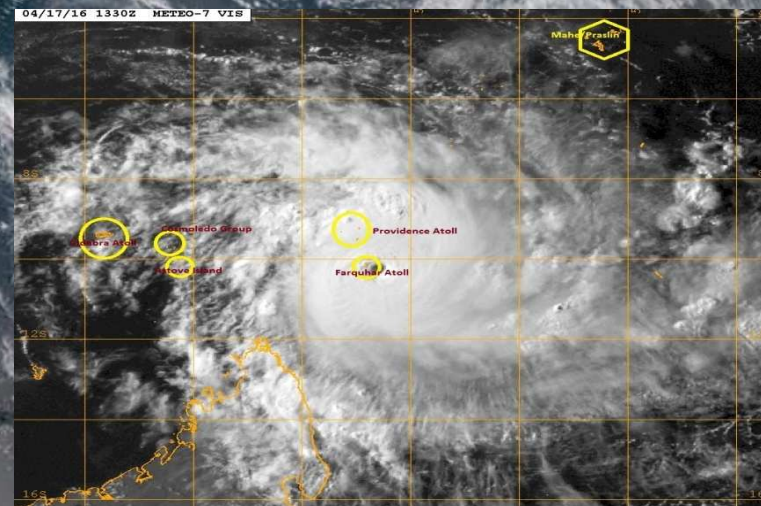
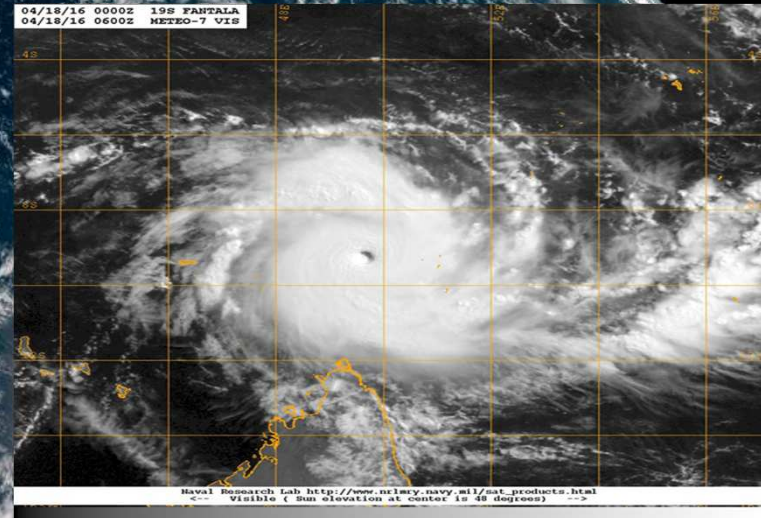




Felleng 2013



Fantala 2016







# Seychelles Meteorological Authority



Multi-Hazard Early Warning System Processes for  
SMA

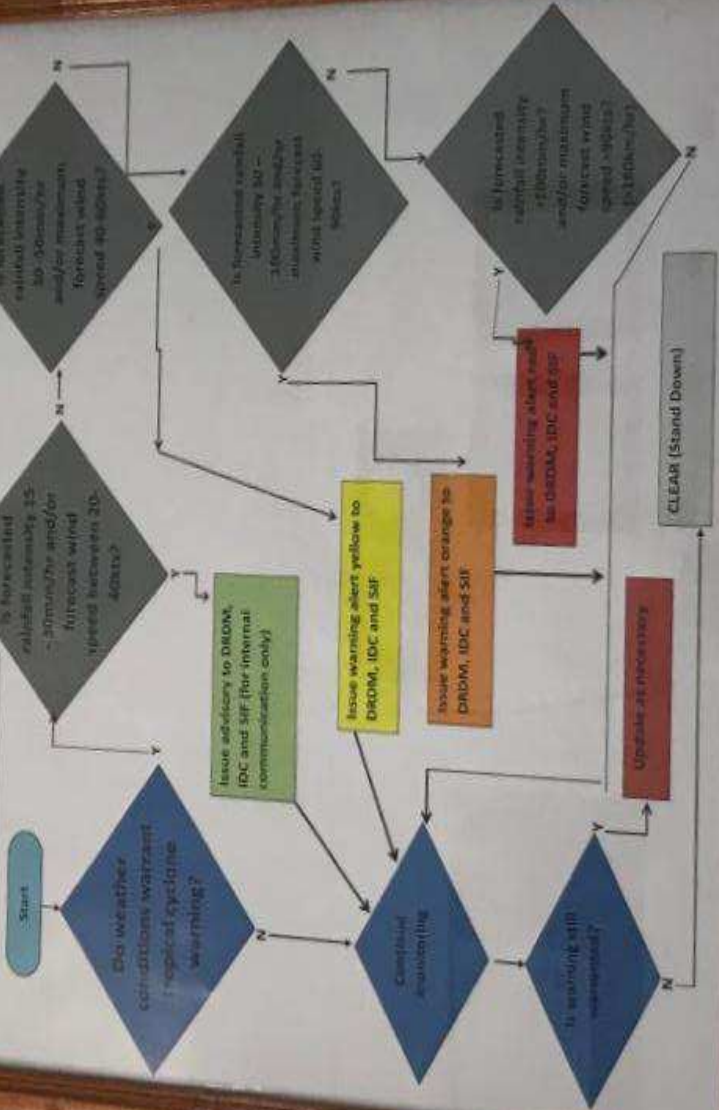
WI-018

## Process for Issuing Tropical Cyclone Warning

Continuity of monitoring cyclone movement and development – using surface weather charts, satellite images and cyclone bulletins from regional cyclone monitoring center – Réunion. Other details found in Handover Log Book and Weather Diary.

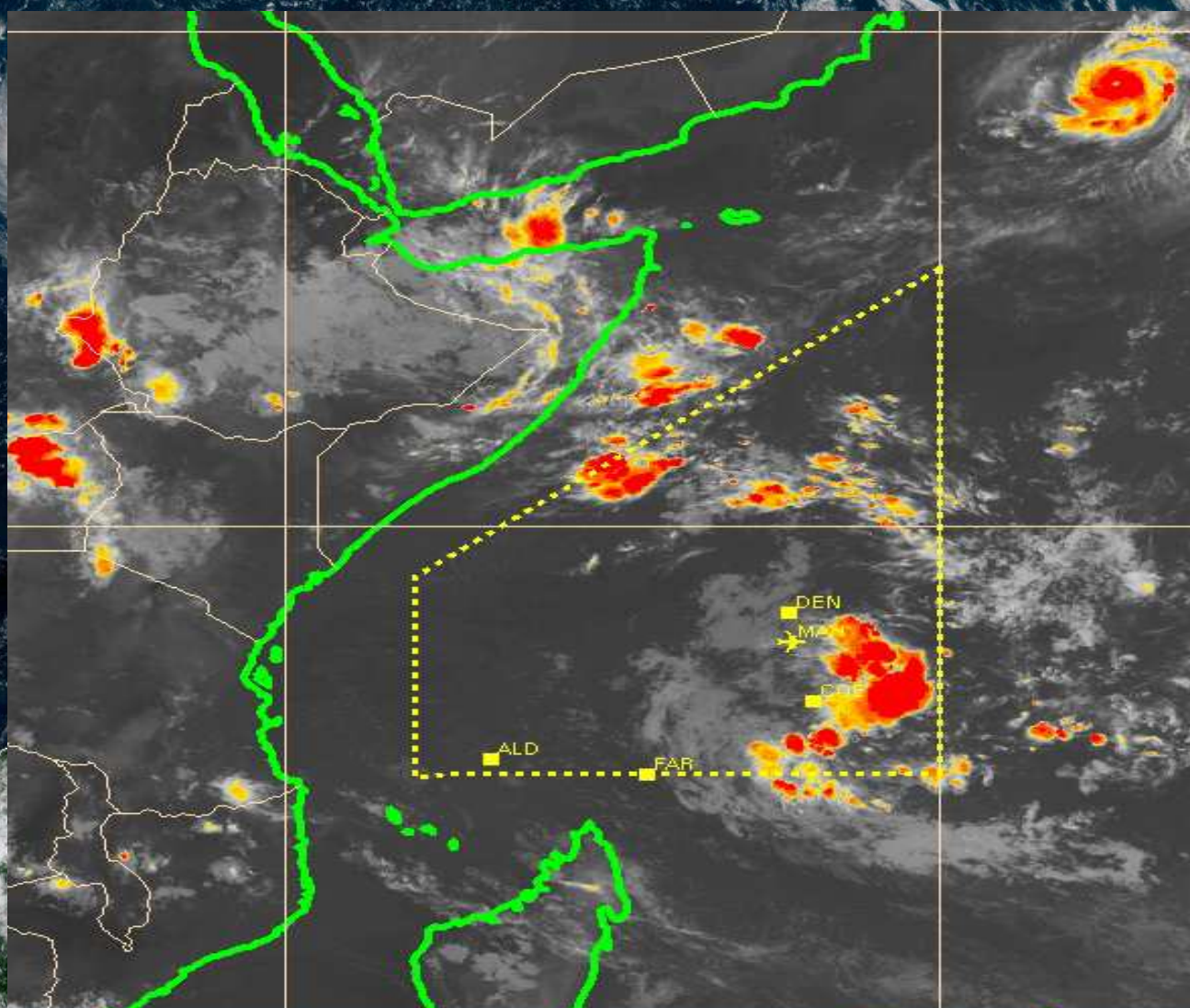
Responsible: Met. Forecaster  
Unless noted otherwise

Warnings to other islands are issued upon request





# Aviation Services: TC Sigmet





# Our Main Resource? RSMC La Reunion

[WEB PAGE](#)



A satellite image of Earth showing several large, swirling hurricane-like storms over the ocean. The text "THANK YOU!" is overlaid in a white box in the center. The image shows the curvature of the Earth, with landmasses visible at the bottom and right edges. The storms are characterized by dense, white, spiral cloud patterns over dark blue ocean water.

THANK YOU!